

ZIPPER MASCHINEN GmbH

Gewerbepark 8

4707 Schlösslberg | AUSTRIA

+43 (0) 7248 61116-700 | FAX 7248 61116-720

info@zipper-maschinen.at | www.zipper-maschinen.at

Originalfassung

DE BETRIEBSANLEITUNG

Übersetzung / Translation

EN USER MANUAL

ABSAUGANLAGE

DUST COLLECTOR



ZI-ASA305A

EAN: 9120039233512





10 PREFACE (EN)

Dear Customer!

This manual contains important information and advice for the correct and safe use and maintenance of the dust collector ZI-ASA305A.

Following the usual commercial name of the device (see cover) is substituted in this manual with the name "machine".

The manual is part of the machine and may not be stored separately. Read it profoundly before first use of the machine and keep it for later reference. When the machine is handed to other persons always put the manual to the machine.

Please follow the security instructions!



Please read the entire manual, to prevent misunderstandings, machine damage or even injuries!

Due to continuous development of our products illustrations, pictures might differ slightly. If you however find errors in this manual, please inform us.

Technical changes excepted!

Please check the product contents immediately after receipt for any eventual transport damage or missing parts.

Claims from transport damage or missing parts must be placed immediately after initial product receipt and unpacking before putting the product into operation.

Please understand that later claims cannot be accepted anymore.

Copyright law

© 2020

This manual is protected by copyright law – all rights reserved. Especially the reprinting as well as the translation and depiction of pictures will be prosecuted by law. Court of jurisdiction is the Landesgericht Linz or the competent court for 4707 Schlüsslberg, AUSTRIA.

Customer Support

ZIPPER MASCHINEN GmbH

Gewerbepark 8, 4707 Schlüsslberg
AUSTRIA

Tel.: +43 7248 61116-700

Fax: +43 7248 61116-720

Mail: info@zipper-maschinen.at



11 SAFETY

The machine must only be used for its intended purpose! Any other use is deemed to be a case of misuse.



To use the machine properly you must also observe and follow all safety regulations, the assembly instructions, operating and maintenance instructions lay down in this manual.

All people who use and service the machine have to be acquainted with this manual and must be informed about the machine's potential hazards. It is also imperative to observe the accident prevention regulations in force in your area. Also observe the symbols and pictograms used as well as the safety instructions and hazard warnings!

The same applies for the general rules of occupational health and safety.

11.1 Intended Use

The machine is used for:

Extraction of wood and plastic chips and wood dust on woodworking machines within the specified limits.

Any manipulation of the machine or its parts is a misuse, in this case ZIPPER-MASCHINEN and its sales partners cannot be made liable for ANY direct or indirect damage.

11.1.1 Ambient Conditions

The machine may be operated:

Relative Humidity	max. 65 %
Temperature (for operation)	+5°C to +40°C
Temperatur (for storage and/or transport)	-25° C to +55° C

The machine shall not be operated outdoors or in wet or damp areas.

The machine shall not be operated in areas exposed to increased fire or explosion hazard.

11.1.2 Prohibited Use

- The operation of the machine without physical and mental aptitude.
- The operation of the machine without knowledge of the manual.
- The operation of the machine outside the stated technical limits specified in the manual.
- Machining of materials which are not expressly listed in this manual.
- Never attempt to use this dust collector to collect large wood pieces, metal materials such as screws, nails or other metal parts and flammable or combustible dust/gas.
- Changes in the design of the machine.
- The removal of the safety markings attached to the machine.
- Modify, circumvent or disable the safety devices of the machine.
- Operating the machine outdoors.
- The use of the machine in wet or damp areas is forbidden (risk of a short circuit!)
- Operation of a woodworking machine in closed rooms without chips and dust extraction (a normal household vacuum cleaner is not suitable as an extraction system).
- Operating the machine in potentially explosive environments.
- The unattended operation on the machine during the working process is forbidden!

The prohibited/hazardous use or disregard of the information and instructions presented in this manual will result in the voiding of all warranty and damage claims against Zipper Maschinen GmbH.

NOTICE



The installation of parts other than original spare parts leads to the loss of the guarantee! Therefore: When replacing components/parts, only use spare parts recommended by the manufacturer.



11.2 User Qualification

Prerequisite for the use / operation of the machine is a corresponding physical and mental aptitude as well as knowledge and understanding of the instruction Manual.

Please note that local laws and regulations may determine the minimum age of the operator and restrict the use of this machine!

Put on your personal protective equipment before working on the machine.

Work on electrical components or equipment may only be carried out by a qualified electrician or carried out under the guidance and supervision of a qualified electrician.

Warning signs and / or stickers on the machine that are illegible or have been removed must be replaced immediately!

11.3 Security Instructions

Missing or non-readable security stickers have to be replaced immediately!

The locally applicable laws and regulations may specify the minimum age of the operator and limit the use of this machine!

To avoid malfunction, machine defects and injuries, read the following security instructions!

- Never operate the machine when it is in need of repair or in poor mechanical condition. Replace damaged, missing, or failed parts before using the machine. Keep the machine in safe working condition!
- Always disconnect the machine prior to any actions performed at the machine.
- Make sure that machine parts that can heat up have cooled down completely before starting maintenance work.
- Avoid unintentional starting.
- Only use original spare parts.
- Check if the connections of the machine are tightened before each use.
- If there are connections for dust extraction, make sure that they are properly connected and in working order.
- Only use perfect tools that are free of cracks and other defects (e.g. deformations).
- Remove tool keys and other adjustment tools before switching on the machine.
- Always work carefully and with the necessary caution and never apply excessive force.
- The machine may only be operated by one person.
- Respectively trained people only and only one person shall operate the machine.
- Always stay focused when working. Reduce distraction sources in your working environment. The operation of the machine when being tired, as well as under the influence of alcohol, drugs or concentration influencing medicaments is forbidden.
- Never leave the machine running unattended! Before leaving the working area switch the machine off and wait until the machine stops.
- Do not allow other people, particularly children, to touch the machine or the cable. Keep them away from your work area.
- Make sure there is nobody present in the dangerous area. The minimum safety distance is 2m.
- When working on the machine, never wear loose jewellery, loose clothing, ties or long, open hair.
- Conceal long hair under hair protection. Never work with long, open hair (danger of pulling in)!
- Wear close-fitting protective clothing and suitable protective equipment (eye protection, dust mask, ear protection; gloves only when handling tools). Loose objects can become entangled and cause serious injuries!



- The machine is solely designed for indoor use.
- Choose a level, vibration-free and non-slip surface for the installation location.
- Ensure sufficient space around the machine!
- Keep your work area dry and tidy! An untidy work area may cause accidents. Avoid slippery floor.
- Keep the area around the machine free of obstacles (e.g. dust, chips, cut parts, etc.).
- Make sure the work area is lighted sufficiently.
- Work in a well ventilated area! If necessary, use dust protection.
- Protect the machine from dampness (causing a short circuit).
- Do not overload the machine.
- Use power tools and machines never in the vicinity of flammable liquids and gases (danger of explosion)
- Do not smoke in close proximity to the machine.
- Regularly check the dust collector hood for debris and clean it if necessary.

11.4 Electrical Safety

- Each time you work with an electrically operated machine, caution is advised! There is a risk of electric shock, fire, cutting injury.
- Shut down the machine and disconnect it from the power supply when the machine is not in use and before carrying out any adjustment, conversion, cleaning, maintenance or repair work. Make sure that the main switch is in the "O" position before connecting the machine to the power source.
- Only operate the machine from a power source that is protected by a FI switch!
- Never use the machine with a defective ON-OFF-switch.
- Water that enters the machine increases the risk of electric shock. Do not expose the machine to rain or moisture.
- The plug of an electrical tool must strictly correspond to the socket. Do not use any adapters together with earthed electric tools.
- A damaged or entangled cable increases the risk of electric shock. Handle the cable with care. Never use the cable to carry, pull or disconnect the machine. Keep the cable away from heat, oil, sharp edges or moving parts.
- Only use suitable extension cords.
- Make sure that the machine is earthed.
- Avoid any physical contact with earthed parts of the machine.
- The machine may only be used in humid environments if the supply is protected by a residual current circuit breaker.

11.5 Special Safety Instructions for that machine

- The machine is for indoor use only.
- Work with gloves on rotating parts is not permitted!
- Wood dust is generated when the machine is in operation. Therefore, connect the machine to a suitable extraction system for dust and chips during installation!
- Always switch on the dust extraction device before you start machining the workpiece!
- Always turn off the woodworking machine first before you stop the dust collector.
- Do not touch parts that might be hot from operation. Allow parts to cool before attempting to maintain, adjust or service.
- Excessive noise can cause hearing damage and temporary or permanent hearing loss. Wear hearing protection certified to health and safety regulations to limit noise exposure.
- Inhaling wood dust is dangerous to health! Always wear a dust protection mask and safety glasses when emptying the collection bag.
- When disposing of the chip waste, ensure that it is disposed of in an environmentally friendly manner!
- Do not insert any objects into the extraction opening and keep it free of deposits that could impair the extraction performance.
- The suction of flammable or combustible vapours, liquids, dust, ash or chips (gases, fuel, cleaning agents, paint residues, hydrogen, coal, magnesium, grain dust, stone dust, hot ash, cigarette butts, etc.) is strictly prohibited.



11.6 Hazard Warnings

In spite of intended use, certain residual risks remain. Due to the design and construction of the machine, dangerous situations may occur when handling the machines, which are marked as follows in this operating manual:

DANGER



A safety instruction designed in this way indicates an imminently hazardous situation which, if not avoided, will result in death or serious injury.

WARNING



Such a safety instruction indicates a potentially hazardous situation which, if not avoided, may result in serious injury or even death.

CAUTION



A safety instruction designed in this way indicates a potentially hazardous situation which, if not avoided, may result in minor or moderate injury.

NOTICE



A safety notice designed in this way indicates a potentially hazardous situation which, if not avoided, may result in property damage.

Notwithstanding all safety regulations, your common sense and appropriate technical suitability/training will remain the most important safety factor in the fault-free operation of the machine. **Safe operation depends foremost on you!**

11.7 Remaining risk factors

Despite of correct and proper use and maintenance there remain some residual risk factors:

Hazard of injury or machine damage due to undetected machine defect

To minimize this risk, check the machine prior to every operation for loose screws and connections. Check the motor noise, the collector tubes, chip container and impeller for eventual damage. Damaged parts have to be replaced immediately, no operation of the machine in the meantime!

Hazard of electric shock

Undetected malfunctions in the power supply and/or the connected wood working machine might result in electric shock when touching the machine. Ensure proper electric installation, and let it check periodically by a trained electrician.

Danger due to unintended machine start-up

Eliminate this risk by disconnecting the machine before you perform any checks or activities on the machine.

Hazard of inhaling toxic wood dust

Especially wood dust arising from chemically treated wood and/or lacquer/paint are harmful when inhaled. Therefore let the dust settle for 10 Minutes before you empty the chop container and wear a suitable breathing mask if required.



12 ASSEMBLY

12.1 Delivery content

Please check the product contents immediately after receipt for any eventual transport damage or missing parts. Claims from transport damage or missing parts must be placed immediately after initial machine receipt and unpacking before putting the machine into operation. Please understand that later claims cannot be accepted anymore.

12.2 Workplace requirements

The workplace has to fulfill the requirements.

The ground has to be even, in level and hard. It must be suitable at least to weight it with double weight per square meter than the machines net weight.

The chosen workplace must have access to a suitable electric supply net hat complies with the machines requirements.

12.3 Transportation

Only use the handle on the motor housing for maneuvering the machine.

12.4 Power supply

WARNING



Dangerous electrical voltage!

The connection of the machine as well as electrical inspections, maintenance and repair may only be carried out by qualified personnel or under guidance and supervision of a qualified electrician!

The connection of the machine to the electric power supply and the following checks have to be carried out by a respectively trained electrician only.

1. The electronic connection of the machine is designated for operation with a grounded power socket!
2. The connector plug may not be manipulated.
3. The grounding wire should be held in green-yellow.
4. The mains supply must be secured with 10A.
5. Check that the mains voltage complies with the requirements of the machine.
6. In case of repair or replacement, the grounding conductor must not be connected to a live box!
7. Make sure that a possible extension cord is in good condition and suitable for the transmission of power. An undersized cord reduces the transmission of power and heats up.
8. A damaged cable must be replaced immediately.
9. Operation is only allowed with safety switch against stray current (RCD max. stray current of 30mA).

NOTICE

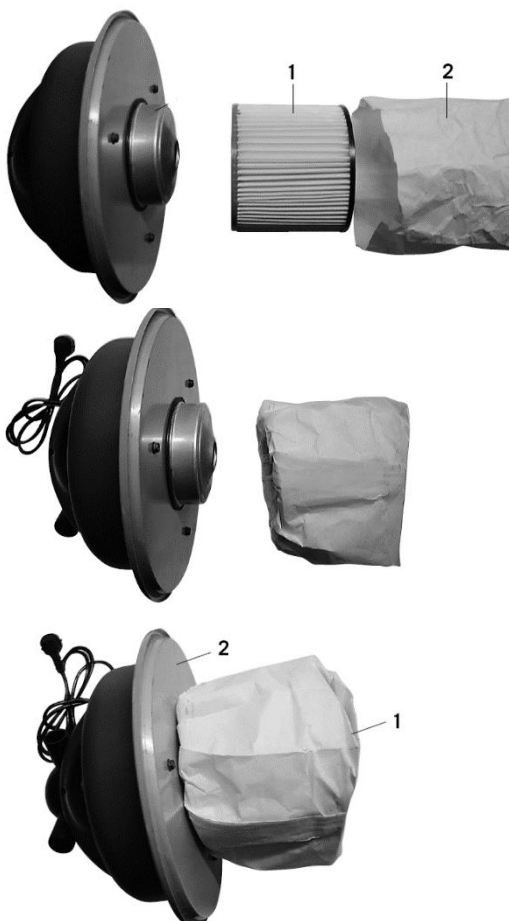
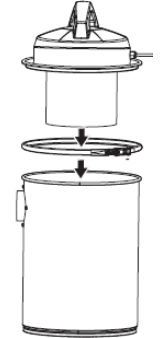
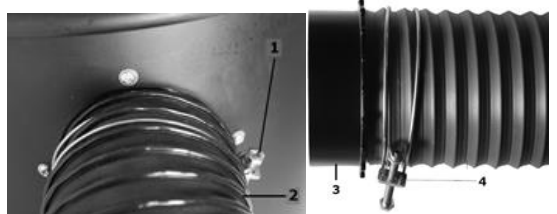


Use only permitted extension cable with cross-section the one in the following table declared.



Voltage	Extension	Cross-section
220 V-240 V 50 Hz	<27 m	1,5 mm ²
	<44 m	2,5 mm ²
	<70 m	4,0 mm ²
	<105 m	6,0 mm ²

12.5 Assembly

	<p>1. Remove motor housing</p> <p>To do this, loosen the locking strap and remove the motor housing.</p>
	<p>2. Assemble filter cartridge and filter bag</p> <ul style="list-style-type: none"> - Insert the filter cartridge (1) into the filter bag (2). - Press the overhang of the filter bag into the filter cartridge. - Place the filter cartridge (1) on the motor housing (2).
	<p>3. Assemble the motor housing again</p> <p>Now place the assembled motor housing on the collection canister and fix it with the locking strap.</p>
	<p>4. Assemble suction connection</p> <ul style="list-style-type: none"> - Assemble the suction hose (2) with the hose clamp (1) on the hose coupling of the collection canister. - At the other end of the suction hose: mount the hose coupling (3) with the hose clamp (4) to the suction hose.



13 OPERATION

Device to be operated in a perfect state only. Inspect the device visually every time it is to be used. Check in particular the safety equipment, electrical controls, electric cables and screwed connection for damage and if tightened properly. Replace any damaged parts before operating the device.

13.1 Operation instructions

WARNING



Perform all machine settings with the machine being disconnected from the power supply!

NOTICE



- Place the machine next to the woodworking machine in a way that it will not interfere with your work!
- Start to work with the woodworking machine only until the dust collector has reached full speed!

13.2 Connection of dust collector to machine

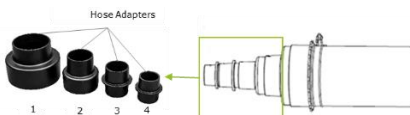
Dust collector plug: **Ø 100mm**

Ensure dust collector tubes to be composed of hardly inflammable material and antistatic.

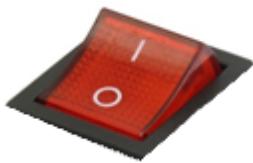
The total distance between dust collector and dust collector plug of the machine shall not exceed 10 meters.

There are four hose adapters supplied.

- Select the hose adapter that best fits to the dust producing machine outlet and attach it to the hose coupler.
- Connect the dust collector adapter to the dust producing machine outlet. Make sure, that the connection is tight.



13.3 ON-OFF-switch



- (I): ON-position
(0): OFF-position

13.4 Starting the machine

- Check that the extractor hose is attached firmly to the adapter of both vacuum extractor and woodworking machine.
- Check if the chip container is tightened well.
- Start the dust collector by switching to the ON-position (I).
- Now start the woodworking machine.

13.5 Stopping the machine

- Switch off the woodworking machine first.
- Turn off the dust collector by switching to OFF-position (0).



13.6 After operation

NOTICE



When the work is finished, the woodworking machine must be switched off first, and then the extraction machine:

- Switch off the machine by pressing the on/off switch (0).
- Disconnect the machine from the power supply by removing the plug from the connection box.

14 CLEANING, MAINTENANCE, STORAGE, DISPOSAL

WARNING



Danger due to electric voltage! Don't clean or do maintenance on the machine while it is still connected to the power supply: Damages to machine and injuries might occur due to unintended switching on of the machine!

Therefore: Switch the machine off and disconnect it from the power supply before any maintenance works or cleaning is carried out.

NOTICE



Only a regularly serviced and well maintained machine can be a satisfactory tool. Maintenance and service deficiencies can lead to unpredictable accidents and injuries. Repairs requiring special expertise should be carried out only by authorized service centers.

Improper repairs can damage the machine or endanger your safety.

14.1 Cleaning

Clean your machine regularly after every usage – it prolongs the machines lifespan and is a pre-requisite for a safe working environment. Remove chips and dust etc. with a suitable tool.

NOTICE



The usage of certain solutions containing ingredients damaging metal surfaces as well as the use of scrubbing agents will damage the machine surface!

Clean the machine surface with a wet cloth soaked in a mild solution.

14.2 Maintenance

The machine does not require extensive maintenance. If malfunctions and defects occur, let it be serviced by trained persons only.

Intervall	Component	Measure
Before operating the machine or after every maintenance or servicing	nuts bolts	Check if securely tightened.
	collection canister	Check, if necessary empty it
	filter cartridge/bag	Check, if necessary, change the filter bag
	wires	Check for damage
	switch	Check for damage
	safety devices	Check the conditon
Weekly	security stickers	Check the conditon. If necessary replace them.
	dust collector hood	Check for deposits that cumulate especially on the protective fence. If necessary clean it.



14.2.1 Emptying the collection canister

Attention: Disconnect from power supply!

The machine operates at a much higher level of efficiency when the collection canister is empty.

Procedure:

- Pull out the handle of locking strap to release and move the locking strap.
- Remove the motor housing with filter cartridge/bag by lifting the top handle.
- Empty chips and dust inside the drum into a suitable receptacle and take care for a proper disposal.
- Replace motor housing with filter cartridge/bag on the collection canister and lock in place with the locking strap.

14.2.2 Changing the filter bag and/or cartridge

Only use filter bags that correspond with the dimensions of the machine.

Switch the chip bag off and let the dust settle at least for 10 minutes.

Attention: disconnect the dust collector from the power supply.

Procedure:

- Pull out the handle of locking strap to release and move the locking strap.
- Remove the motor housing with filter cartridge/bag by lifting the top handle.
- Slide filter cartridge with bag off motor
- Remove bag from cartridge. Place new bag over cartridge, folding the bag excess inside the cartridge.
- Slide cartridge with new bag onto motor until snug.
- Replace motor housing with filter cartridge/bag on the collection canister and lock in place with the locking strap.

14.3 Storage

NOTICE



If stored incorrectly, important components can be damaged and destroyed. Store packaged or already unpacked parts only under the intended environmental conditions.

14.4 Disposal



Do not dispose the machine in residual waste. Contact your local authorities for information regarding the available disposal options. When you buy at your local dealer for a replacement unit, the latter is obliged to exchange your old.

15 TROUBLE SHOOTING

WARNING



Danger due to electrical voltage! Manipulating the machine with the power supply up may result in serious injury or death. Before carrying out any troubleshooting work, always disconnect the machine from the power supply and secure it against unintentional recommissioning.

Many possible sources of error can be excluded in advance if the machine is properly connected to the mains.



If you are unable to carry out necessary repairs properly and/or do not have the required training, always consult a specialist to solve the problem.

Trouble	Possible cause	Solution
Device will not start	• No mains voltage. Main circuit breaker is tripped.	• Check the socket, mains supply cable, cord, mains plug; if necessary, have them repaired the main fuse
	• On-Off switch is broken	• Repair necessary
	• Motor faulty	• Repair necessary
Motor will not run	• Defektive or broken switch	• Repair necessary
	• Defective or damaged power cord	• Repair necessary
	• Open circuit, loose connections, or burned out motor	• Repair necessary
	• Low voltage	• Check the power line for the proper voltage. Use another circuit or have a qualified one
Motor slow to start or fails to reach full speed	• Burned or defektive motor	• Check motor, replace if necessary
	• Worn brushes	• Inspect brushes, replace if necessary
Motor overheats	• Motor overload	• Reduce load by slowing dust production
	• Insufficient motor cooling	• Clean sawdust from motor
Tripping circuit breaker or fuses	• Motor overload	• Reduce load by slowing dust production
	• Improper capacity of circuit breaker or fuses	• Use proper capacity circuit breaker or fuse
Unit has vibration or noisy operation	• Motor or components are loose	• Inspect/replace any stripped or damaged bolts/nuts and retighten
	• Motor bearings faulty	• Repair necessary
Loud, repetitious noise or excessive vibration coming from dust collector	• Dust collection canister is full	• Empty collection canister
	• Filter cartridge/bag is dirty or damaged	• Clean filter cartridge/bag or replace
	• Suction hose restricted	• Remove hose from dust collector inlet and unlock the restriction in the hose. A plumbing snake may be necessary.
	• The lumber is wet and dust is not flowing through the hose smoothly	• Process lumber with less than 20% moisture content
	• There is a leak in the suction hose	• Inspect and replace suction hose
Motor stalls	• Short circuit in motor	• Take to a qualified service technician
	• Incorrect fuses or circuit breakers	• Replace with correct fuse or circuit breaker for the circuit
	• Overload circuit	• Turn off other machines and retry
	• Low voltage	• Check the power line for the proper voltage. Use another circuit or have a qualified electrician upgrade the service



16 ERSATZTEILE / SPARE PARTS

16.1 Ersatzteilbestellung / Spare Parts Order

(DE) Mit ZIPPER-Ersatzteilen verwenden Sie Ersatzteile, die ideal auf Ihre Maschine abgestimmt sind. Die optimale Passgenauigkeit der Teile verkürzt die Einbauzeit und verlängert die Lebensdauer der Maschine.

HINWEIS



Der Einbau von anderen als Originalersatzteilen führt zum Verlust der Garantie! Daher gilt: Beim Tausch von Komponenten/Teilen nur vom Hersteller empfohlene Ersatzteile verwenden.

Zum Bestellen von Ersatzteilen verwenden Sie bitte das Serviceformular am Ende dieser Anleitung. Geben Sie stets Maschinentype, Ersatzteilnummer sowie Bezeichnung an. Um Missverständnissen vorzubeugen, empfehlen wir, mit der Ersatzteilbestellung eine Kopie der Ersatzteilzeichnung beizulegen, auf der die benötigten Ersatzteile eindeutig markiert sind.

[Bestelladresse](#) sehen Sie [unter Kundendienstadressen im Vorwort dieser Dokumentation](#).

(EN) With ZIPPER spare parts, you use spare parts that are ideally matched to your machine. The optimum fitting accuracy of the parts shortens the installation time and extends the service life of the machine.

NOTICE

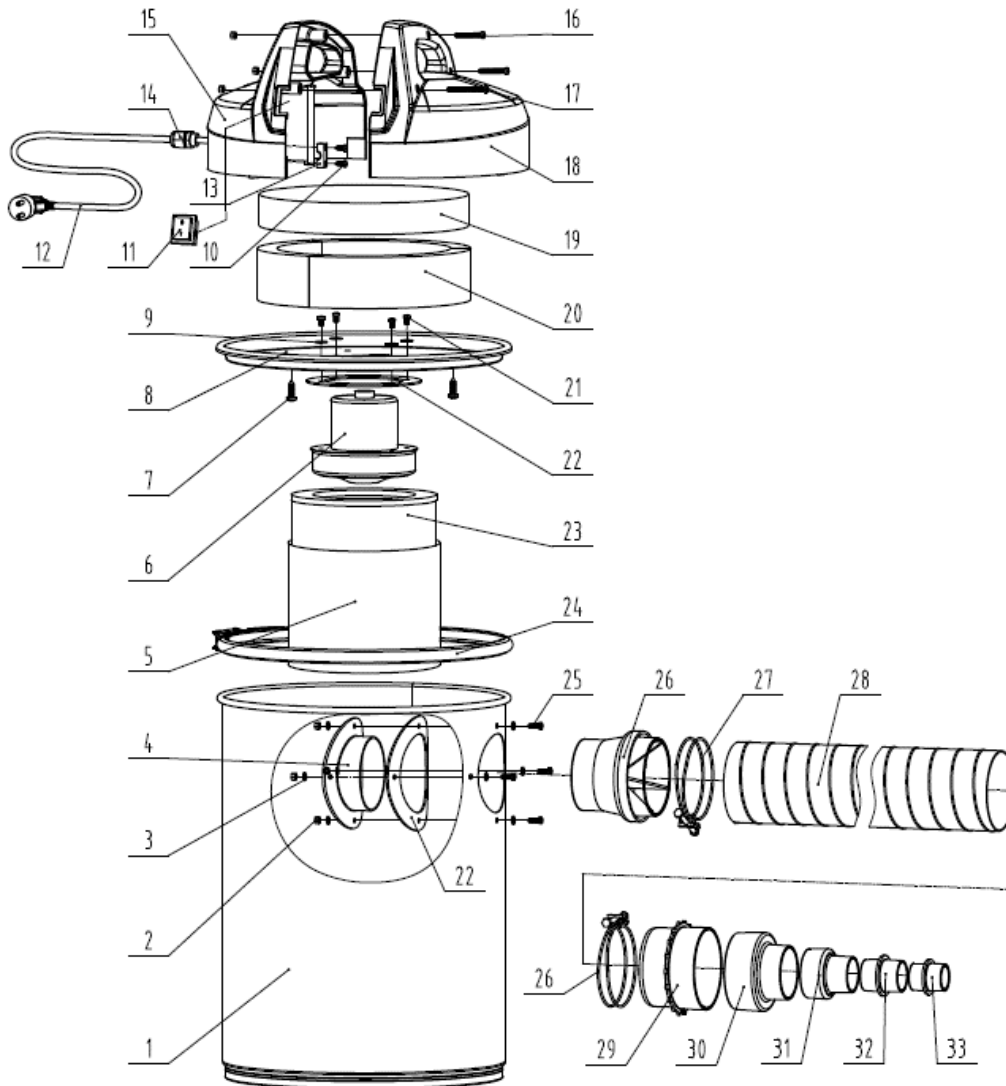


The installation of parts other than original spare parts leads to the loss of the guarantee! Therefore: When replacing components/parts, only use spare parts recommended by the manufacturer.

Please use the service form at the end of this manual to order spare parts. Always state machine type, spare part number and designation. In order to avoid misunderstandings, we recommend that you enclose a copy of the spare parts drawing with your spare parts order, on which the required spare parts are clearly marked.

[You find the order address in the preface of this operation manual.](#)

16.2 Explosionszeichnung / Explosion drawing



No.	Description	Qty	No.	Description	Qty
1	Drum	1	18	Right Guard	1
2	Nut M5	7	19	Circle Sponge	1
3	Flat Washer 5	8	20	Long Sponge	3
4	Suction Inlet	1	21	Philips Screw M5*8	3
5	Filter Bag	1	22	Seal Gasket	2
6	Motor	1	23	Filter Cartridge	1
7	Philips Screw ST6.3*22	3	24	Locking Strap	1
8	Top Cover	1	25	Philips Screw M5*14	4
9	Large Flat Washer 5	3	26	Hose Coupling 2	1
10	Cord Press Block	1	27	Hose Clamp	2
11	Switch	1	28	Suction Hose	1
12	Power Cord	1	29	Hose Coupling 1	1
13	Philips Screw ST4.2*13	2	30	Hose Adapter 1	1
14	Strain Relief M16	1	31	Hose Adapter 2	1
15	Left Guard	1	32	Hose Adapter 3	1
16	Philips Screw M5*35	2	33	Hose Adapter 4	1
17	Philips Screw M5*50	1			



19 WARRANTY GUIDELINES (EN)

1.) Warranty:

Company ZIPPER-MASCHINEN GmbH grants for mechanical and electrical components a warranty period of 2 years for amateur use; and warranty period of 1 year for professional use, starting with the purchase of the final consumer. In case of defects during this period, which are not excluded by paragraph 3, ZIPPER-MASCHINEN GmbH will repair or replace the machine at its own discretion.

2.) Report:

In order to check the legitimacy of warranty claims, the final consumer must contact his dealer. The dealer has to report in written form the occurred defect to ZIPPER. If the warranty claim is legitimate, ZIPPER-MASCHINEN GmbH will pick up the defective machine from the dealer. Returned shippings by dealers which have not been coordinated with ZIPPER-MASCHINEN GmbH, will not be accepted and refused.

3.) Regulations:

a) Warranty claims will only be accepted, when a copy of the original invoice or cash voucher from the trading partner of ZIPPER is enclosed to the machine. The warranty claim expires if the accessories belonging to the machine are missing.

b) The warranty does not include free checking, maintenance, inspection or service works on the machine. Defects due to incorrect usage of the final consumer or his dealer will not be accepted as warranty claims either. Some examples: usage of wrong fuel, frost damages in water tanks, leaving fuel in the tank during the winter, etc.

c) Defects on wear parts are excluded, e.g. carbon brushes, collection bags, knives, cylinders, cutting blades, clutches, sealings, wheels, saw blades, splitting crosses, riving knives, riving knife extensions, hydraulic oils, oil/air/fuel filters, chains, spark plugs, sliding blocks, etc.

d) Also excluded are damages on the machine caused by incorrect or inappropriate usage, if it was used for a purpose which the machine is not supposed to, ignoring the user manual, force majeure, repairs or technical manipulations by not authorized workshops or by the customer himself, usage of non-original ZIPPER spare parts or accessories.

e) After inspection by our qualified personnel, resulted costs (like freight charges) and expenses for not legitimated warranty claims will be charged to the final customer or dealer.

f) In case of defective machines outside the warranty period, we will only repair after advance payment or dealer's invoice according to the cost estimate (incl. freight costs) of ZIPPER.

g) Warranty claims can only be granted for customers of an authorized ZIPPER dealer who directly purchased the machine from ZIPPER. These claims are not transferable in case of multiple sales of the machine.

4.) Claims for compensation and other liabilities:

The liability of company ZIPPER-MASCHINEN GmbH is limited to the value of goods in all cases. Claims for compensation because of poor performance, lacks, damages or loss of earnings due to defects during the warranty period will not be accepted. ZIPPER-MASCHINEN GmbH insists on its right to subsequent improvement of the machine.