

Operating Instructions

Part Washing Unit

TWG 20, TWG 80, TWG 150



TWG 20



TWG 80



TWG 150

TWG-SERIES

Imprint

Product identification

Part Washing Unit	Item number
TWG 20	6220020
TWG 80	6220080
TWG 150	6220150

Manufacturer

Stürmer Maschinen GmbH
Dr.-Robert-Pfleger-Str. 26
D-96103 Hallstadt

Fax: 0049 (0) 951 96555 - 55
E-Mail: info@unicraft.de
Internet: www.unicraft.de

Indications regarding the operating instructions

Genuine operating instructions

Edition: 18.03.2021
Version: 1.07
Language: English

Author: ES/RL

Indications regarding the copyright

Copyright © 2021 Stürmer Maschinen GmbH, Hallstadt, Germany.

The contents of these operating instructions are the sole property of the company Stürmer Maschinen GmbH. Passing on as well as copying of this document, the use and distribution of its content are prohibited if not explicitly permitted. Contraventions are liable to compensation.

Subject to technical modifications and error.

Contents

1 Introduction	3
1.1 Copyright	3
1.2 Customer service	3
1.3 Limitation of liability	3
2 Safety	3
2.1 Symbol explanation	3
2.2 Responsibility of the operator	4
2.3 Personnel requirements	4
2.4 Personal protective equipment	5
2.5 Safety labels	5
2.6 Safety instructions	5
3 Intended Use	6
4 Technical Data	6
4.1 Type plate	6
5 Transport, Packaging, Storage	7
6 Description of the Device	8
6.1 Accessories	8
7 Assembly, Set up and Connecting	8
7.1 Assembly	8
7.2 Electrical connection	10
8 Commissioning	10
9 Care, Maintenance and Repair	11
9.1 Care by cleaning	11
9.2 Maintenance and repair/servicing	12
9.3 Troubleshooting	12
10 Disposal, Recycling of used Devices ..	13
10.1 Decommission	13
10.2 Disposal via municipal collection points	13
10.3 Disposal of lubricants	13
11 Spare Parts	13
11.1 Ordering spare parts	13
11.2 Spare parts drawings	14
11.2.1 Spare parts drawing TWG 20	14
11.2.2 Spare parts list TWG 20	15
11.2.3 Spare parts drawing TWG 80	16
11.2.4 Spare parts List TWG 80	17
11.2.5 Spare parts drawing TWG 150	18
11.3 Spare Parts List TWG 150	19
12 Electrical wiring diagram	19
13 EC - Declaration of Conformity	20
14 Notes	21

1 Introduction

You have made a good choice by purchasing the UNICRAFT part washing unit.

Thoroughly read the operating instructions before commissioning the part washing unit.

This informs about the proper commissioning, the intended use as well as the safe and efficient operation and maintenance of the part washing unit.

The operating instructions are part of the part washing unit. It must always be stored at the place of use of the part washing unit. In addition, the local accident prevention regulations and general safety regulations apply for the area of application of the part washing unit.

Illustrations in this operating manual serve the general understanding and may deviate from the actual design.

1.1 Copyright

The contents of this manual are protected by copyright. Their use is permitted when using the machine. Any further use is not permitted without the written permission of the manufacturer.

We hereby apply for trademark, patent and design rights to protect our products, if this is possible in individual cases. We vigorously oppose any infringement of our intellectual property.

1.2 Customer service

Please contact your dealer if you have questions concerning your product or if you need technical advice. They will help you with specialist information and expert advice.

Germany:

Stürmer Maschinen GmbH
Dr.-Robert-Pfleger-Str. 26
D-96103 Hallstadt

Repair service:

Fax: 0049 (0) 951 96555-111
Email: service@stuermer-maschinen.de
Internet: www.unicraft.de

Spare parts orders:

Fax: 0049 (0) 951 96555-119
Email: ersatzteile@stuermer-maschinen.de

We are always interested in valuable experience and knowledge gained from using the application-which then could be shared and be valuable to develop our products even further.

1.3 Limitation of liability

All information and notes in these operating instructions were summarised while taking applicable standards and rules, the state-of-the-art technology and our long-term knowledge and experiences into consideration.

In the following cases the manufacturer is not liable for damages:

- Non-observance of the operating instructions,
- Inappropriate use
- Use of untrained staff
- Unauthorised modifications
- Technical changes
- Use of not allowed spare parts

The actual scope of delivery may deviate from the explanations and presentations described here in case of special models, when using additional ordering options or due to latest technical modifications.

The obligations agreed in the delivery contract, the general terms and conditions as well as the delivery conditions of the manufacturer and the legal regulations valid at the time of the conclusion of the contract apply.

2 Safety

This section provides an overview of all important safety packages for the protection of operating personnel as well as for safe and fault-free operation. Other task-based safety notes are included in the paragraphs of the individual phases of life.

2.1 Symbol explanation

Safety instructions

The safety notes in these operating instructions are highlighted by symbols. The safety notes are introduced by signal words which express the concern of the risk.



ATTENTION!

This combination of symbol and signal word indicates a potentially hazardous situation which, if not avoided, could result in property damage and environmental damage.



DANGER!

This combination of symbol and signal words indicates an imminently dangerous situation which may lead to death or severe injuries if they are not avoided.



WARNING!

This combination of symbol and signal word indicates a potentially dangerous situation. It leads to death or serious injury if it is not avoided.



CAUTION!

This combination of symbol and signal word indicates a potentially hazardous situation which, if not avoided, may result in minor or light injuries.



NOTE!

This combination of symbol and signal word indicates a potentially dangerous situation. It can lead to material and environmental damage if it is not avoided.

Tips and recommendations



Tips and recommendations

This symbol highlights useful tips, recommendations and information for efficient and trouble-free operation.

It is necessary to observe the safety notes written in these operating instructions in order to reduce the risk of personal injuries and damages to property.

2.2 Responsibility of the operator

The operator is the person who operates the machine for commercial or economic purposes himself or leaves it to a third for use or application and bears the legal product responsibility for the protection of the user, personnel or third during operation.

If the part washing unit is used for commercial purposes, the operating company of the the part washing unit must comply with the legal working safety regulations. Therefore, the safety notes in this operating manual, as well as the safety, accident prevention and environment protection regulations applying for the area of application of the the part washing unit must be met. The following applies in particular:

- The operator must obtain information about the applicable occupational safety regulations and, in a risk assessment, must also determine additional hazards resulting from the special working conditions at the place of use of the machine. He must implement these in the form of operating instructions for the operation of the machine.

- The operator must check during the entire period of use of the machine whether the operating instructions he has prepared comply with the current state of the regulations and adjust them if necessary.
- The operator must clearly regulate and determine the responsibilities for installation, operation, troubleshooting, maintenance and cleaning.
- The operator must ensure that all persons handling the machine have read and understood this manual. In addition, he must train the staff at regular intervals and inform them about the dangers.
- The operator must provide the personnel with the necessary protective equipment and bind the wearing of the required protective equipment.

Furthermore, the operator is responsible for ensuring that the machine is always in perfect technical condition. Therefore, the following applies:

- The operator must ensure that the maintenance intervals described in this manual are observed.
- The operator must have all safety equipment regularly checked for functionality and completeness.

2.3 Personnel requirements

The various tasks described in this manual place different demands on the qualifications of the people entrusted with these tasks.



WARNING!

Danger due to insufficient qualification of persons!

Insufficiently qualified persons can not assess the risks involved in handling the machine and expose themselves and others to the risk of serious or fatal injuries.

- All work should only be carried out by qualified persons.
- Keep inadequately qualified persons out of the work area.

Only persons reliable working procedures can be expected from, are allowed to perform all works. Persons the responsiveness of which is affected by e. g. drugs, alcohol or medication, are not allowed to work with the machine.

The qualifications of the personnel for the different tasks are mentioned below:

Operator:

The operator is instructed by the operating company about the assigned tasks and possible risks in case of improper behaviour. Any tasks which need to be performed beyond the operation in the standard mode must only be performed by the operator if it is indicated in these instructions and if the operating company expressly commissioned the operator.

Electrician:

The electrician is due to their professional training, knowledge and experience as well as knowledge of the relevant standards and regulations able to work on electrical systems and independently recognize and avoid possible dangers. The electrician is specially trained for the work environment in which he works and knows the relevant standards and regulations.

Qualified personnel:

Due to their professional training, knowledge and experience as well as their knowledge of relevant regulations the specialist staff is able to perform the assigned tasks and to recognise and avoid any possible dangers themselves.

Manufacturer:

Certain works may only be performed by specialist personnel of the manufacturer. Other personnel is not authorized to perform these works. Please contact our customer service for the execution of all arising work.

2.4 Personal protective equipment

The personal protective equipment serves to protect persons against impairments of safety and health while working. The staff member has to wear personal protective equipment while performing different tasks on and with the machine which are indicated in the individual paragraphs of these instructions.

The personal protective equipment is explained in the following paragraph:



Ear protection

The ear protection protects against hearing damage caused by noise.



Respiratory protection

The respiratory protection protects the respiratory tract against the ingress of dust and small foreign bodies.



Eye protection

The protective goggles protect the eyes from flying parts and liquid splashes.



Protective gloves

The protective gloves protect the hands from sharp-edged components as well as from friction, abrasions or deeper injuries.



Safety boots

The safety boots protect the feet against bruising, falling parts and slipping on slippery surfaces.



Protective clothing

The protective clothing is tight-fitting clothing with low tear resistance.

2.5 Safety labels

Various safety labels are attached to the part washing unit, which must be observed and followed.

The safety labels must not be removed. Damaged or missing safety labels can lead to incorrect handling, personal injury and damage to property. They must be replaced immediately.

If the safety labels are not immediately recognizable and comprehensible, the part washing unit should be taken out of service until new safety labels have been made.

The following safety labels and symbols are attached:



Fig. 1: Safety labels on the part washing unit

2.6 Safety instructions



Use protective gloves!



DANGER!

Danger to life from electric current!

ALWAYS disconnect the part washing unit from the power source before servicing or cleaning the unit.

- Keep the work area clean and tidy. Untidy workplaces and workbenches increase the risk of accidents and injuries.
- Always wear protective gloves, eye protection, mouth protection and safety shoes.
- Ensure adequate lighting. The illuminance should be at least 300 lux.

- Never point the cleaning hose at your own body or at other people or animals.
- Do not operate the unit near heat sources such as radiators, open fire sources and near flying sparks.
- Do not breathe in any vapours that are hazardous to health! (Follow the safety data sheets of the cleaning agent manufacturer).
- Fill the cleaning agent up to the specified level of the parts tray.
- Keep children and persons not familiar with the parts washer away from their working environment.
- The parts washer must not be used by persons with reduced physical, sensory or mental capabilities.
- Do not smoke near the machine.
- Never use the machine near water or in a damp environment.
- Never work under the influence of concentration disorders, fatigue, drugs, alcohol or medication.
- Use the parts washer only in well-ventilated rooms.
- Check the device for damage. Damaged parts should be properly repaired or replaced.
- Avoid physical contact with earthed objects such as radiators.
- Only use the appliance on an earthed power supply and with an earth leakage circuit breaker (RCD).
- Only use original spare parts and accessories to avoid possible hazards and risks of accidents.



ATTENTION!

- Do not pull the cable. Only pull on the plug to disconnect it. Keep the cable away from heat sources, oil and sharp edges.
- Always ensure that the device is switched off at the ON/OFF switch before inserting the power plug into the socket.



ATTENTION!

The part washing unit may only be operated with non-flammable liquids and only with water-based cleaning agents!

3 Intended Use

The part washing unit is designed exclusively for thorough cleaning of workpieces with water-based cleaning solution. The part washing unit is only approved for operation with suitable cleaning agents and may only be operated by persons who have been instructed in the use of the device.

Proper use also includes compliance with all information in this manual. Any use beyond the intended use or otherwise is considered misuse.

For structural and technical changes to the part washing unit, the company Stürmer Maschinen GmbH assumes no liability.

Claims of any kind due to damage due to improper use are excluded.

4 Technical Data

Model	TWG 20	TWG 80	TWG 150
Length	430 mm	760 mm	1090 mm
Width / Depth	340 mm	540 mm	540 mm
Height	220 mm	880 mm	890 mm
Weight	6,5 kg	23 kg	42 kg
Supply voltage	230 V/ ~50 Hz	230 V/ ~50 Hz	230 V/ ~50 Hz
Cabine capacity	20 l	80 l	150 l
Max. weight on support grille	10 kg	20 kg	40 kg
Speed of circulation	3,3 l/min	3,3 l/min	3,3 l/min
Minimum solvent capacity	10,5 l	36 l	72 l
Connection cable length	1,5 m	1,5 m	1,5 m
Absorbed power drive motor	0,026 kW	0,026 kW	0,026 kW

4.1 Type plate

Teilwaschgerät Part washing device		  
Typ Type	TWG 20	Serien-Nr. Serial no.
Artikel-Nr. Item no.	6220020	Baujahr <small>Monat/Jahr</small> Year of manufacture <small>month/year</small>
Gewicht Weight	6,5 kg	Netzanschluss Power connection
Max. Last Auflagegitter Max. capacity of grid	10 kg	230 V / 50 Hz
Inhalt Reinigungsmitteltank Capacity solvent tank	10,5 l	Volumenstrom Volume flow
 www.unicraft.de		3,3 l/min
Stürmer Maschinen GmbH Dr.-Robert-Pfleger-Str. 26, 96103 Hallstadt Deutschland / Germany		

Fig. 2: Type plate

5 Transport, Packaging, Storage

Delivery

Check the part washing unit for visible transport damage after delivery. If you discover any damage, immediately report it to the transport company or the dealer.

Transport



NOTE!

Protect the device from moisture.



NOTE!

Observe the weight of the device during transport and lifting. The transport and lifting equipment must be able to pick up the load.

The part washing unit must not be stacked on top of each other. No other objects may be placed on the part washing unit.



Tips and recommendations

For longer transports, ensure that the corrosion protection is intact or renewed if necessary.



NOTE!

The device must never be stored or transported filled or in a lying position!

General risks during internal transport

Devices may only be transported by authorized and qualified persons. Act responsibly during transport and always consider the consequences. Refrain from daring and risky actions.

Gradients and descents (e.g. driveways, ramps and the like) are particularly dangerous. If such passages are unavoidable, special caution is required.

Before starting the transport check the transport route for possible danger points, unevenness and disturbances as well as for sufficient strength and load capacity.

Danger points, unevenness and disturbance points must be inspected before transport. The removal of danger spots, disturbances and unevenness at the time of transport by other employees leads to considerable dangers.

Careful planning of internal transport is therefore essential.

Packaging

All used packaging materials and packaging aids are recyclable and should be taken to a materials recycling depot to be disposed of.

The delivery packaging is made of cardboard, so please dispose carefully by having it chopped up and given to the recycling collection.

The film is made of polyethylene (PE) and the cushioned parts of polystyrene (PS). These materials should be taken to a collection point for recyclable materials or to the local waste disposal company.

Storage

The part washing unit must be thoroughly cleaned before storing in a dry, clean, and frost-free environment. Never store the device filled.

6 Description of the Device

Illustrations in this operating manual may differ from the original.



Fig. 3: Part Washing Unit TWG-Series

- 1 Protective cover
- 2 Cleaning gun
- 3 ON/OFF switch
- 4 Filling container
- 5 Substructure
- 6 Base plate

6.1 Accessories

- Cleaning brush
Item number: 6231020
- Filter for TWG 80 and TWG 150
Item number: 6231021

7 Assembly, Set up and Connecting

The part washing unit may only be set up and operated in dry, well-ventilated rooms.

It must be set up stable on a level and firm ground.

It is important to ensure that there is enough freedom of movement and sufficient lighting to work.



Use protective goggles!



Use protective gloves!



Wear safety boots!



Wear protective clothes!



CAUTION!

Risk of crushing!

There is a risk of injury to fingers and hands if improper work is carried out during assembly of the part washing unit.

- Note the weight of the parts washing device. Pay attention to stable supports and support devices.

7.1 Assembly

TWG 20

Step 1: Screw the metal hose onto the connection piece of the pump outlet (Fig. 4).



Fig. 4: Assembly TWG 20

Step 2: Place the cleaning grille over the brackets on the tray walls. Ensure that the nozzle of the metal hose is shaped so that it points downward toward the center of the tray (Fig. 5).



Fig. 5: Assembly TWG 20

Step 3: Fill the tray with a suitable water-based cleaning solution so that the pump is completely covered (Fig. 6).

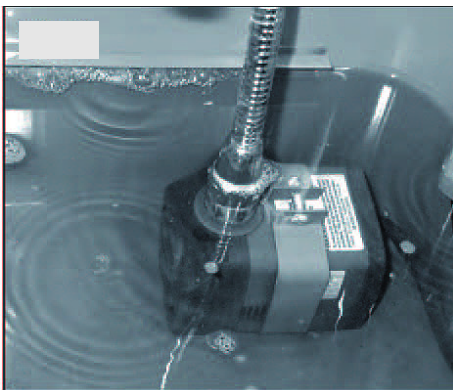


Fig. 6: Assembly TWG 20



ATTENTION!

Make sure that the cleaning solution completely covers the pump, otherwise the pump function is restricted.

Step 4: Connect the part washing unit to a suitable, earthed power outlet whose mains voltage corresponds to the technical data of the device.

Step 5: Set the ON/OFF switch to the "ON" position. The part washing unit is now ready for use.

TWG 80 and TWG 150

Step 1: With the lid closed, place the tray upside down on a non-scratch surface (cardboard, carpet, etc.).

Step 2: Attach each leg to the tray with the provided 6 mm screw set, washers and nuts (Fig. 7A).

Step 3: Fasten the base plate in the middle of the tray with 2 sets of screws, washers and nuts each (Fig. 7B).

Step 4: Screw the metal hose onto the pump outlet (Fig. 7C).

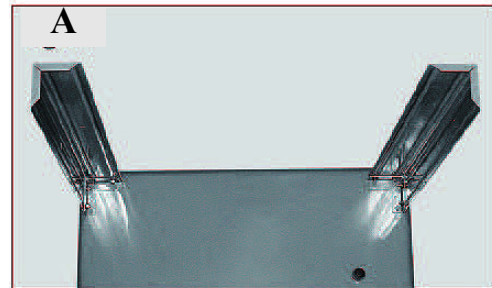


Fig. 7: Assembly TWG 80 and TWG 150

Step 5: Place the 4" x 4" fibrous filter in the perforated filter cover and slide it under the pump cover (Fig. 7C).

Step 6: Place the cover on the pump and allow the cover to engage in the pump housing (Fig. 7C).

Step 7: Return the device to its upright position and open the cover.

Step 8: Insert the pump power cord through the rectangular opening on the side of the tray. The power switch is visible through the rectangular opening (Fig. 8).

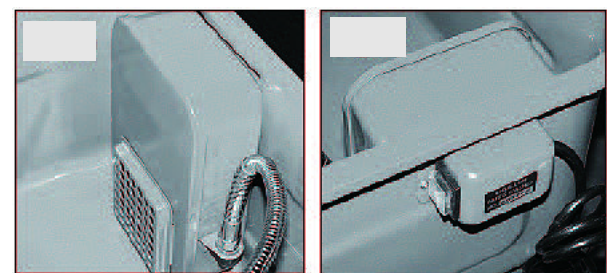


Fig. 8: Assembly TWG 80 and TWG 150

Step 9: Check that the drain plug is securely fastened.

Step 10: Place the cleaning grille over the brackets on the tray walls. Ensure that the nozzle of the metal hose is shaped so that it points downward toward the center of the tray (Fig. 5).

Step 11: Installation of the supplied cleaning brush (OPTIONAL):

The cleaning brush can be placed with the end of the hose on the nozzle of the metal hose (Fig. 9). Ensure that the nozzle or brush is shaped so that it points downward toward the center of the tray.

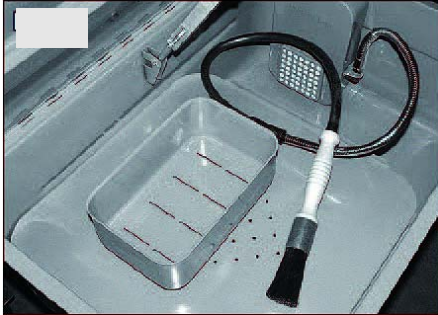


Fig. 9: Assembly TWG 80 and TWG 150

Step 12: Fill the tray with a suitable water-based cleaning solution so that the pump is completely covered (Fig. 6).

Step 13: Connect the part washing unit to a suitable, earthed power outlet whose mains voltage corresponds to the technical data of the device.

Step 14: Set the ON/OFF switch to the "ON" position. The part washing unit is now ready for use.

7.2 Electrical connection



DANGER!

Danger to life from electric current!

In case of contact with live components, there is an immediate danger to life through electric shock.

- Work on the electrical system may only be carried out by qualified electricians.



ATTENTION!

The part washing unit must have a good grounding to avoid static electricity and sparking.

Check that the mains voltage corresponds to the voltage specified on the type plate.



DANGER!

The parts washer may only be operated with RCD (residual current circuit breaker).

The wires in the power cord are colored as follows:

Blue: Neutral
Brown: Voltage
Yellow-Green: Grounding

If the colors of the wires in the power cord of this product do not match the terminal markings of your plug, please follow the procedure below.

- The blue coloured wire must be connected to the terminal marked N or black.
- The brown wire must be connected to the terminal marked L or red.
- The yellow-green coloured wire must be connected to the terminal marked E or green.

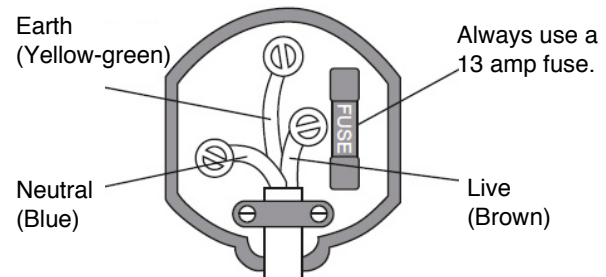


Fig. 10: Electrical connection

8 Commissioning



ATTENTION!

Do not use flammable liquids in the parts washer. Only use water-based cleaning agents!



WARNING!

Danger to life!

There is danger to your life if you do not follow these rules.

- Never work on the part washing unit if you are under the influence of alcohol, drugs or medicines and / or you are overtired or suffer from concentration-impairing illnesses.
- The part washing unit may only be operated by one person. Other persons must keep away from the work area during operation.



NOTE!

Before using the parts washer for the first time, carry out the following points:

- Please check all screw connections on the assembled the part washing unit and tighten them if necessary.
- Check the part washing unit for leaks.



Use protective goggles!



Wear respiratory protection!



Wear safety boots!



Wear protective clothes!



Use protective gloves!

Step 1: Connect the unit to the mains power supply and switch the unit to "ON" at the power switch (Fig. 11).



Fig. 11: Switch on the part washing unit

Step 2: Place the parts to be cleaned in the part washing unit.

Step 3: The parts should be completely covered by the cleaning solution. Depending on the degree of contamination, allow the cleaning solution to soak in for some time and then remove the grease and dirt residues with a brush.

Step 4: Allow excess detergent to drain off, remove the parts from the part washing unit and washing-up them with warm water.

Step 5: At the end of the operation, switch off the pump (position OFF), close the cover and remove the plug from the socket.

9 Care, Maintenance and Repair



ATTENTION!

Disconnect the parts washer from the power supply before carrying out any servicing, maintenance or cleaning work. Service and maintenance work may only be carried out by qualified personnel..

9.1 Care by cleaning

Always keep the part washing unit in a clean condition. Before any repair, inspection, maintenance or cleaning work is performed, the unit must be disconnected from the power supply and all liquid must be drained from the unit.



Use protective goggles!



Use protective gloves!



NOTE!

Never use strong detergents for any cleaning work. This can lead to damage or destruction of the device.

All plastic parts and painted surfaces should be cleaned with a soft, damp cloth and some neutral detergent. Keep the tool clean and dry.

Cleaning the pump grille

Step 1: Pull the mains plug. Check the pump suction grille after each cleaning process (Fig. 12) and clean it if necessary.



ATTENTION!

If regular cleaning at the pump inlet is not carried out, this can lead to a lower liquid flow, a reduced cleaning effect and a possible pump motor failure.

Step 2: If extremely contaminated, it is necessary to replace the cleaning solution and remove deposits from the bottom of the tray.

Step 3: Drain the cleaning solution into a suitable container and dispose of it properly.



Fig. 12: Cleaning the pump grille

9.2 Maintenance and repair/servicing



ATTENTION!

Maintenance and repair work may only be carried out by qualified personnel.

If the part washing unit does not work properly, contact a dealer or our customer service. The contact details can be found in chapter 1.2 Customer Service.

All protection and safety equipment must be reinstalled immediately after completion of repair and maintenance work.

- The hose and filter must be checked and cleaned at regular intervals for damage and contamination. If damaged, replace hose and filter.
- Check all screws for tightness.
- Oil moving metal parts regularly (multi-purpose oil).
- Regularly remove dirt from screen openings.
- Clean dirt from the unit regularly. Regular cleaning makes it easier to work with the parts washer.

9.3 Troubleshooting



ATTENTION!

If any of the following errors occur, immediately stop working with the part washing unit. It can cause serious injury or damage to the tool. All repairs or replacement work must only be carried out by qualified and trained personnel.

Fault	Possible cause	Solution
The cleaning agent does not flow evenly.	The pump may not be completely covered with cleaning solution.	The pump must be completely covered with cleaning solution for proper operation (Fig. 6).
Cover does not remain open.	Safety plate or swivel arm defective.	Safety plate or swivel arm defective. Contact customer service.
Pump does not deliver.	1. The hose is dirty. 2. Pump or switch defective.	1. Pull out the mains plug and clean the hose. 2. Contact customer service.

10 Disposal, Recycling of used Devices

In your own interests and in the interests of the environment, please ensure that all components of the equipment are disposed of in the proper and authorized way.

10.1 Decommission

Disused devices must be taken out of service immediately in order to avoid later misuse and endangering the environment or people.

- Step 1: Remove all environmentally hazardous fluids from the part washing unit.
- Step 2: If necessary, disassemble the part washing unit into manageable and usable assemblies and components.
- Step 3: The product components and operating materials must be routed through the appropriate disposal routes.

10.2 Disposal via municipal collection points

Disposal of used electrical and electronic equipment (Applicable in the countries of the European Union and other European countries with a separate collection system for this equipment).



The symbol on the product or its packaging indicates that this product should not be treated as normal household waste, but should be handed in at a collection point for the recycling of electrical and electronic equipment. By helping to dispose of this product correctly, you will help protect the environment and the health of those around you. Environment and health are endangered by incorrect disposal. Material recycling helps to reduce the consumption of raw materials. For more information about recycling this product, contact your local authority, municipal waste disposal service or the shop where you purchased the product.

10.3 Disposal of lubricants

Remove any excess, leaking or used grease from the lubricated lubrication points.

The disposal instructions for the used lubricants are provided by the lubricant manufacturer. If necessary, ask for the product-specific data sheets.

11 Spare Parts



DANGER!

Risk of injury through the use of the incorrect spare parts!!

The use of incorrect or faulty spare parts can cause danger for the operator as well as damage and malfunctions.

- Use only original spare parts from the manufacturer or spare parts approved by the manufacturer.
- If anything is unclear, always contact the manufacturer.



Tips and recommendations

The manufacturer's warranty is invalid if unauthorized spare parts are used.

11.1 Ordering spare parts

The spare parts can be obtained from the dealer or directly from the manufacturer. The contact details are in chapter 1.2 Customer Service. Specify the following key data when inquiring or ordering spare parts:

- Device type
- Item number
- Position number
- Construction year
- Amount
- Desired shipping method (post, freight, sea, air, express)
- Delivery address

Spare parts orders without details given above can not be considered. If the shipping method is missing, shipping will be at the discretion of the supplier. Details of the device type, article number and year of construction can be found on the type plate, which is attached to the part washing unit.

Example

The tank for the parts washer TWG 20 must be ordered. The tank has the number 1 in the spare parts drawing 1.

When ordering spare parts, send a copy of the spare parts drawing (1) with marked component (tank) and marked item number (1) to the authorized dealer or to the spare parts department and provide the following information:

- Type of device: **Part Washing Unit TWG 20**
- Item number: **6220020**
- Drawing number: **1**
- Position number: **1**

11.2 Spare parts drawings

The following drawings are intended to help identify necessary spare parts when servicing. Send a copy of the parts drawing with the marked components to your authorized dealer to order.

11.2.1 Spare parts drawing TWG 20

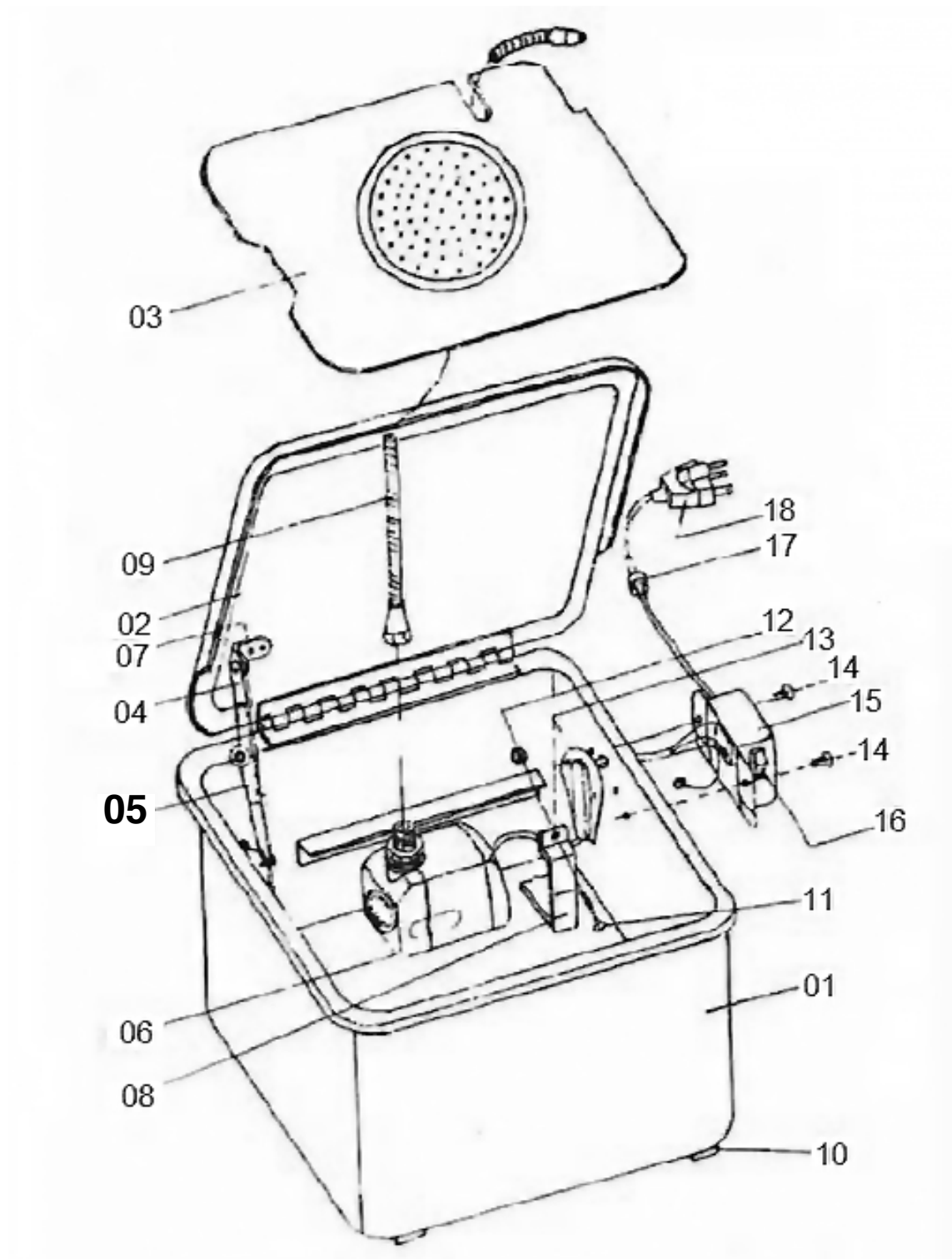


Fig. 13: Spare parts drawing TWG 20

11.2.2 Spare parts list TWG 20

Pos.	German	English
1	Wanne	Tank
2	Deckel	Lid
3	Herausnehmbarer Zwischenboden	Heavy-Duty Removable
4	Deckelstütze	Fusible Link Arm
5	Deckelstütze	Fusible Link Arm
6	Pumpe	Pump
7	Niete	Rivet
8	Halterung Pumpe	Pump Holder
9	Flexibles Stahlrohr	Flexible Metal Spigot
10	Kunststoff-Gerätefuß	Plastic Foot
11	Schraube M5x30	M5x30 Screw
12	Schraubenmutter M5	M5 Nut
13	Abdeckung	Cover
14	Schraube M4x12	M4x12 Screw
15	Schalter-Gehäuse	Switch Box
16	Schalter	Switch
17	Zugentlastung Kabel	Strain Relief
18	Stromkabel	Power Cord

11.2.3 Spare parts drawing TWG 80

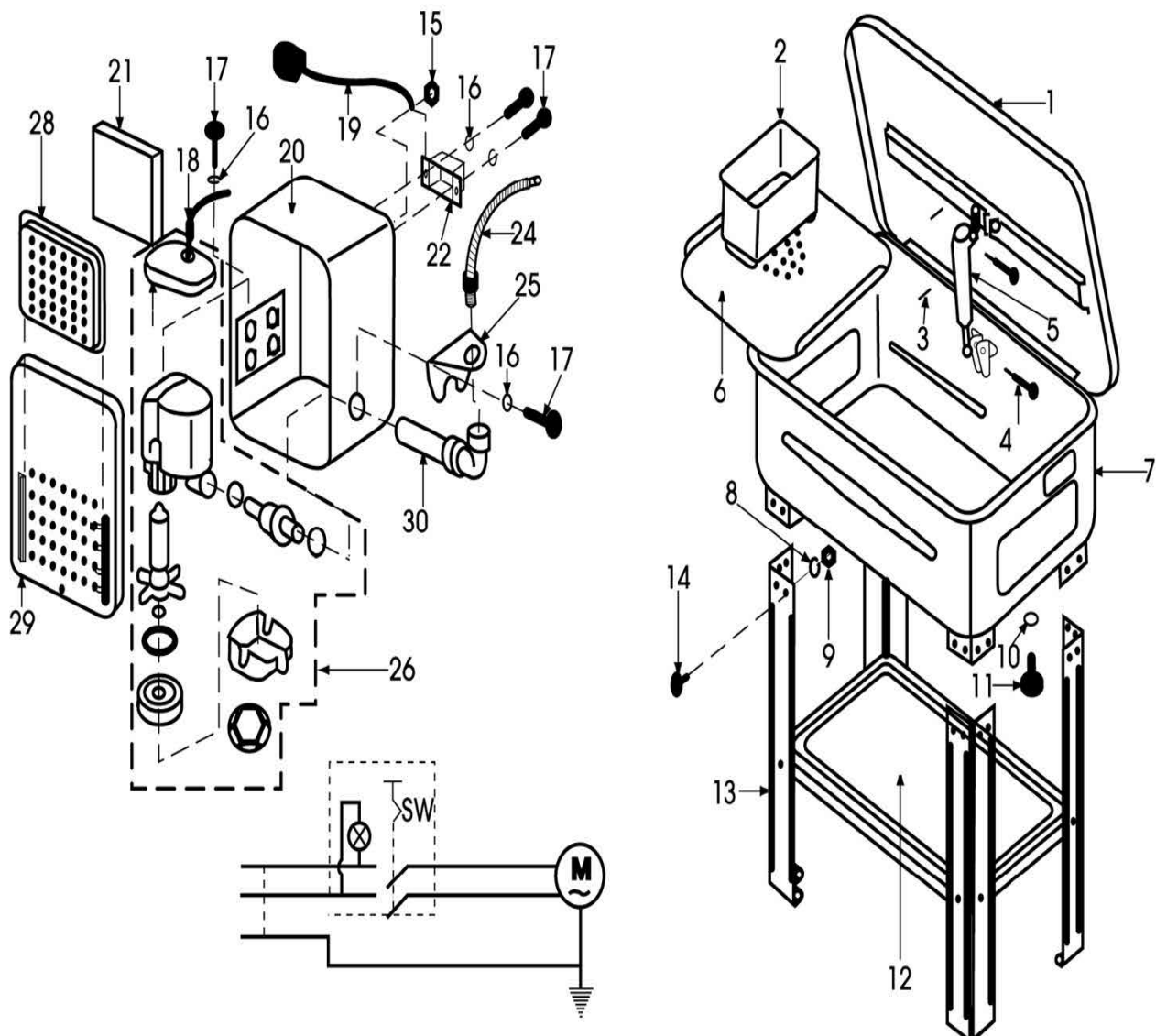


Fig. 14: Spare parts drawing TWG 80

11.2.4 Spare parts List TWG 80

Pos.	German	English
1	Deckel	Lid
2	Behälter für Kleinteile	Small Parts Container
3	Federstift	Spring Pin
4	Stift	Pin
5	Scharnier	Lid Stay c/w Fusible Link
6	Arbeitsfläche	Work Shelf
7	Wanne	Tank
8	Federscheibe	Spring Washer
9	Schraubenmutter	Nut
10	O-Ring	O-Ring
11	Stopfen	Plug
12	Zwischenboden	Shelf
13	Gestellfüße	Leg
14	Flachkopfschraube	Pan Head Screw
15	Schraubenmutter	Nut
16	Federscheibe	Spring Washer
17	Schraube	Screw
18	Durchführungstülle	Grommet
19	Stromkabel und -anschluss	Power Cable & Plug
20	Pumpengehäuse	Pump Housing
21	Platte	Screen
22	Aus/Ein-Schalter	On/Off-Switch
23	Schalter-Gehäuse	Switch Box
24	Schlauch	Flexible Pipe
25	Halterung Rohr	Elbow Seat
26	Pumpeneinheit	Pump Assy complete
27	n/a	n/a
28	Filter Abdeckung	Filter Cover
29	Gehäuseabdeckung	Pump Housing Cover
30	Rohr	Elbow

11.2.5 Spare parts drawing TWG 150

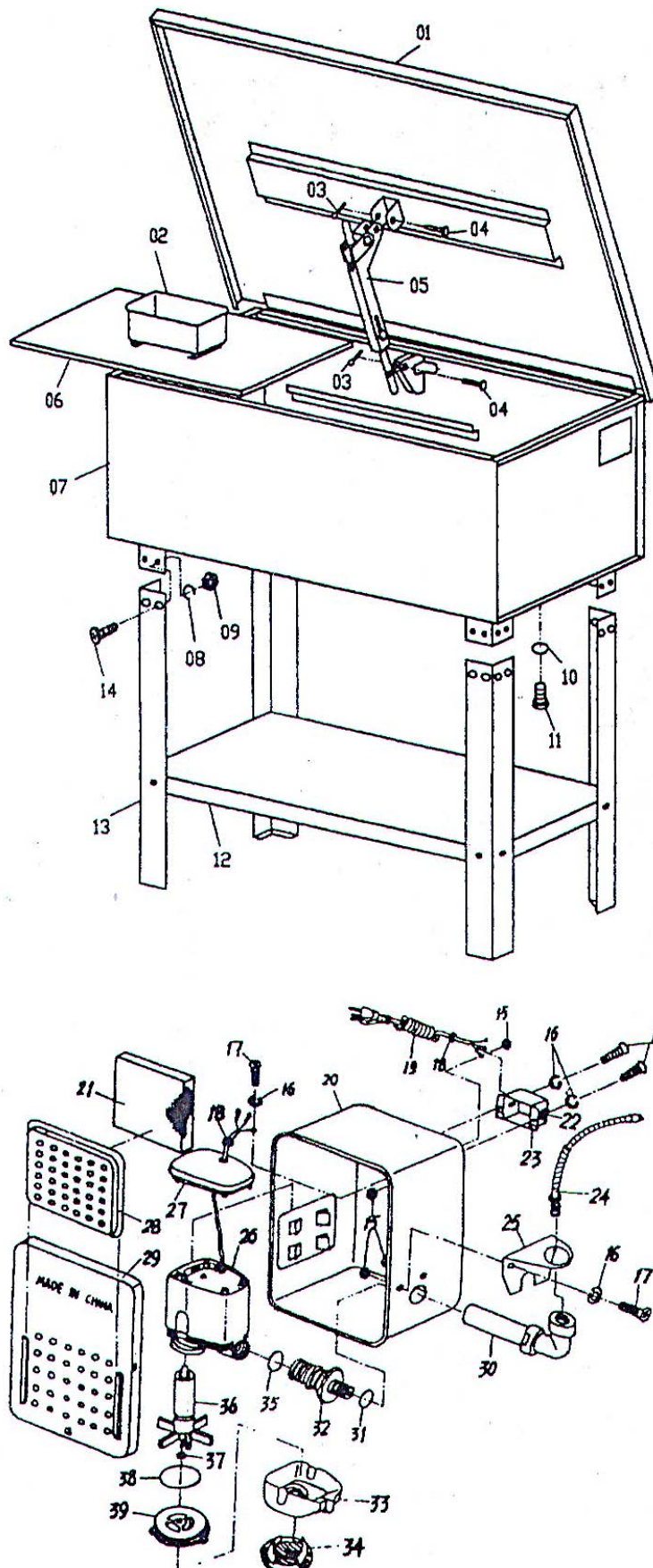


Fig. 15: Spare parts drawing TWG 150

11.3 Spare Parts List TWG 150

Pos.	German	English	Pos.	German	English
1	Deckel	Cover	21	Platte	Screen
2	Ablagekorb	Work Basket	22	Schalter	Switch
3	Federstift	Spring Pin	23	Schalter-Gehäuse	Switch Box
4	Stift	Pin	24	Schlauch	Flexible Pipe
5	Scharnier	Safety Plate	25	Halterung Rohr	Elbow Seat
6	Arbeitsfläche	Work Shelf	26	Pumpengehäuse	Pump Body
7	Wanne	Body	27	Hintere Abdeckung	Pump Back Cover
8	Federscheibe	Spring Washer	28	Filter Abdeckung	Filter Cover
9	Schraubenmutter	Nut	29	Gehäuseabdeckung	Pump Housing Cover
10	O-Ring	O-Ring	30	Rohr	Elbow
11	Stopfen	Plug	31	Plastik U-Scheibe	Plastic Washer
12	Zwischenboden	Shelf	32	Anschlussgewinde	Spigot
13	Gestellfüße	Leg	33	Position Taster	Location of Knob
14	Schraube	Pan Screw	34	Filter	Filter
15	Schraubenmutter	Nut	35	Dichtungsring	Seal Ring
16	Federscheibe	Spring Washer	36	Rotor	Impeller
17	Schraube	Screw	37	Unterlegscheibe	Shin Washer
18	Zugentlastung Kabel	Strain Relief	38	Dichtungsring	Seal Ring
19	Kabel und Anschluss	Cable and Plug	39	Rotor-Träger	Impeller Holder
20	Pumpengehäuse	Pump Housing			

12 Electrical wiring diagram

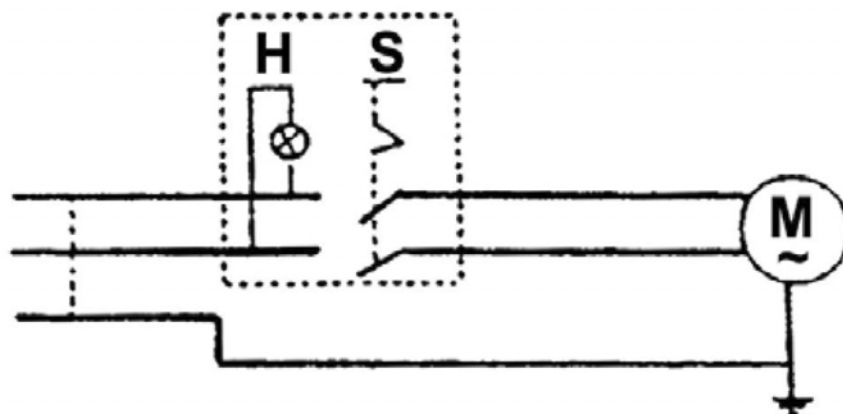


Fig. 16: Electrical wiring diagram

13 EC - Declaration of Conformity

Manufacturer/distributing company: Stürmer Maschinen GmbH
Dr.-Robert-Pfleger-Str. 26
D-96103 Hallstadt

hereby declares that the following product

Product group: Unicraft® Workshop technology

Type of machine: Part Washing Unit

Designation of machine*: **Item number:**

☐ TWG 20 6220020
☐ TWG 80 6220080
☐ TWG 150 6220150

Serial number*: _____

Year of manufacture*: 20____

*please fill in according to the information on the type plate

complies with all relevant provisions of the above-mentioned Directive as well as the other applicable Directives (hereafter), including any changes in force at the time of declaration.

Relevant EU directives:	2014/30/EU	EMC Directive
	2014/35/EU	Low Voltage Directive
	2011/65/EU	RoHS Directive
	2012/19/EU	WEEE Directive

The following harmonized standards have been applied:

DIN EN 60204-1/A1:2009-10	Safety of machinery - Electrical equipment of machinery - Part 1: General requirements
DIN EN 60335-1:2012+A11:2014	Safety of electrical appliances for household and similar purposes - Part 1: General requirements
EN 60335-2-2:2010 + A11:2012 + A1:2013	Household and similar electrical appliances - Safety - Part 2-2: Particular requirements for vacuum cleaners and water-suction cleaning appliances
EN 55014-1:2006 + A1:2009 + A2:2011	Electromagnetic compatibility - Requirements for household appliances, electric tools and similar apparatus - Part 1: Emission
DIN EN 55014-2:2016-01	Electromagnetic compatibility - Requirements for household appliances, electric tools and similar apparatus - Part 2: Immunity - Product family standard
DIN EN 61000-3-2:2015-03	Electromagnetic compatibility (EMC) - Part 3-2: Limits - Limits for harmonic current emissions (equipment input current ≤ 16 A per phase)
DIN EN 61000-3-3:2014-03	Electromagnetic compatibility (EMC) - Part 3-3: Limits - Limitation of voltage changes, voltage fluctuations and flicker in public low-voltage supply systems, for equipment with rated current ≤ 16 A per phase and not subject to conditional connection.

Responsible for documentation: Kilian Stürmer, Stürmer Maschinen GmbH,
Dr.-Robert-Pfleger-Str. 26, D-96103 Hallstadt

Hallstadt, 20.01.2020



Kilian Stürmer
Managing Director



14 Notes

