

Spare parts drawing PG-E 60 SEA , PG-E 80 TEA and PG-E 90 SEA - Complete assembly

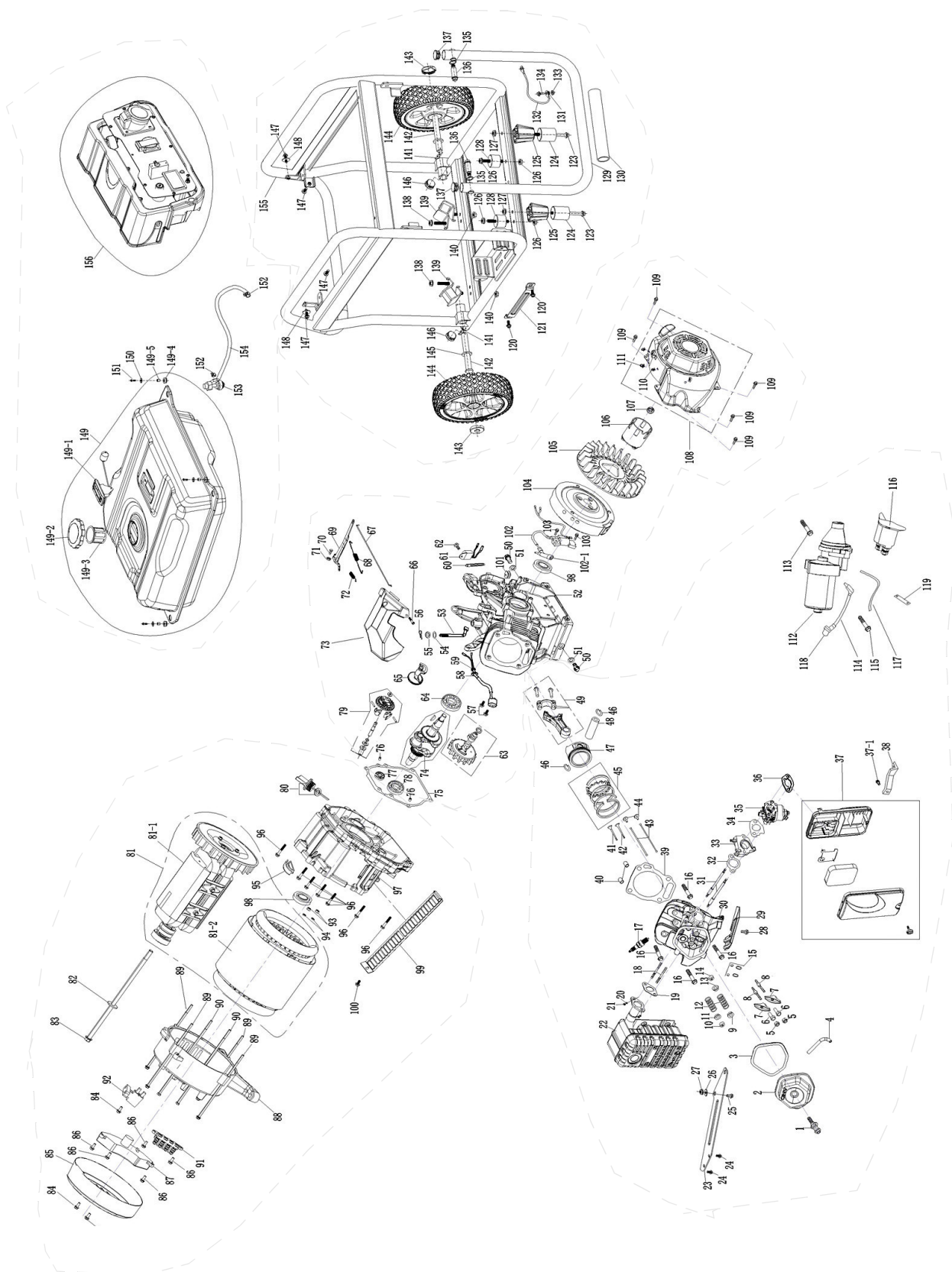
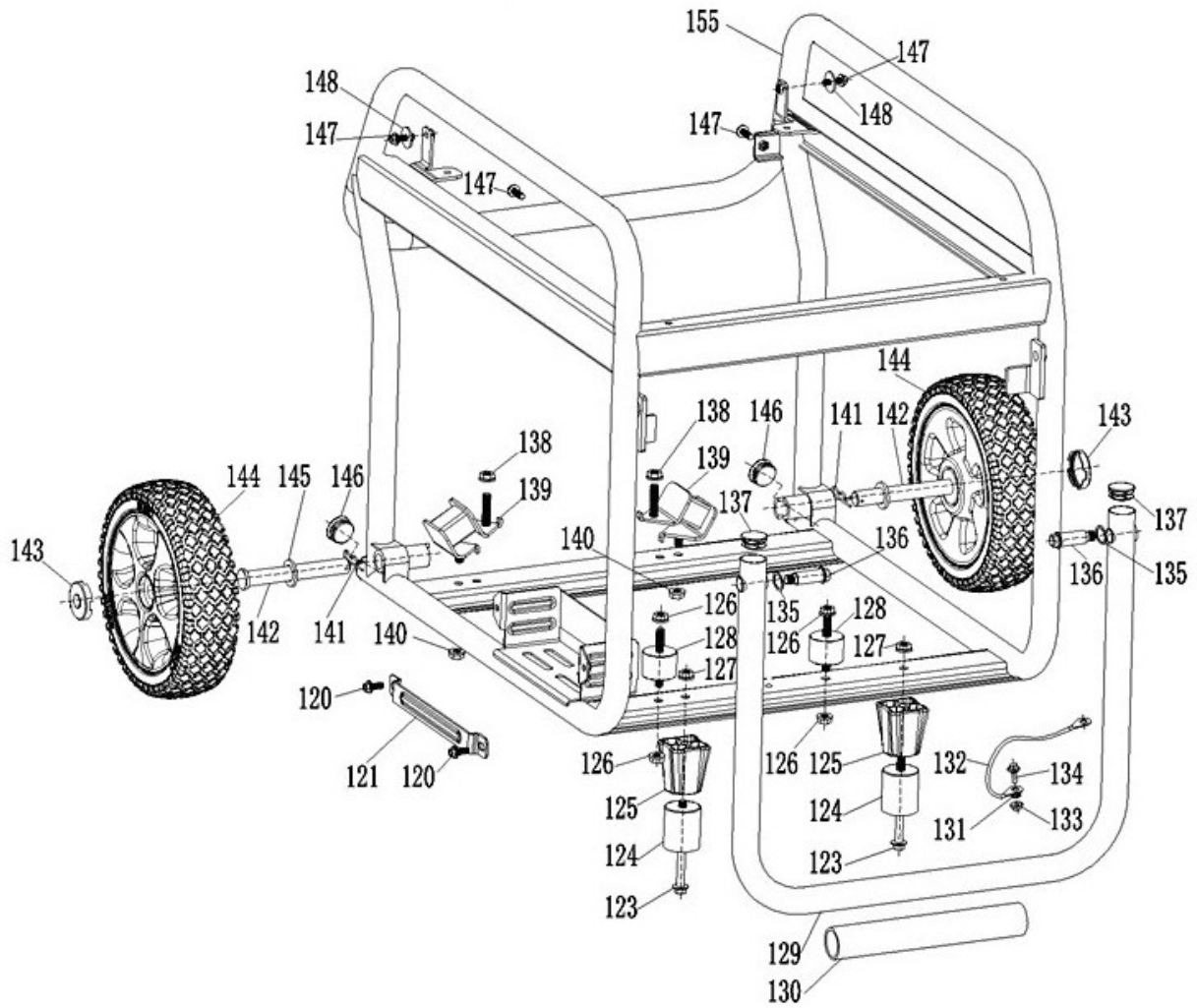


Fig. 32: Spare parts drawing PG-E 60 SEA, PG-E 80 TEA and PG-E 90 SEA - complete assembly

**Spare parts drawing 1: PG-E 60 SEA , PG-E 80 TEA and PG-E 90 SEA**



**Spare parts drawing 2: PG-E 60 SEA , PG-E 80 TEA and PG-E 90 SEA**

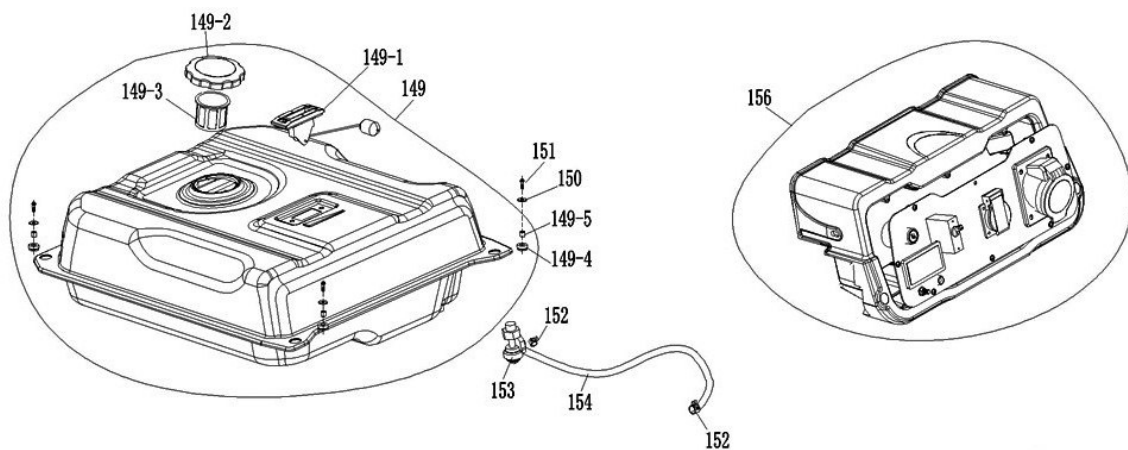


Fig. 33: Spare parts drawing 1 und Spare parts drawing 2 PG-E 60 SEA, PG-E 80 TEA and PG-E 90 SEA

Spare parts drawing 3: PG-E 60 SEA , PG-E 80 TEA and PG-E 90 SEA

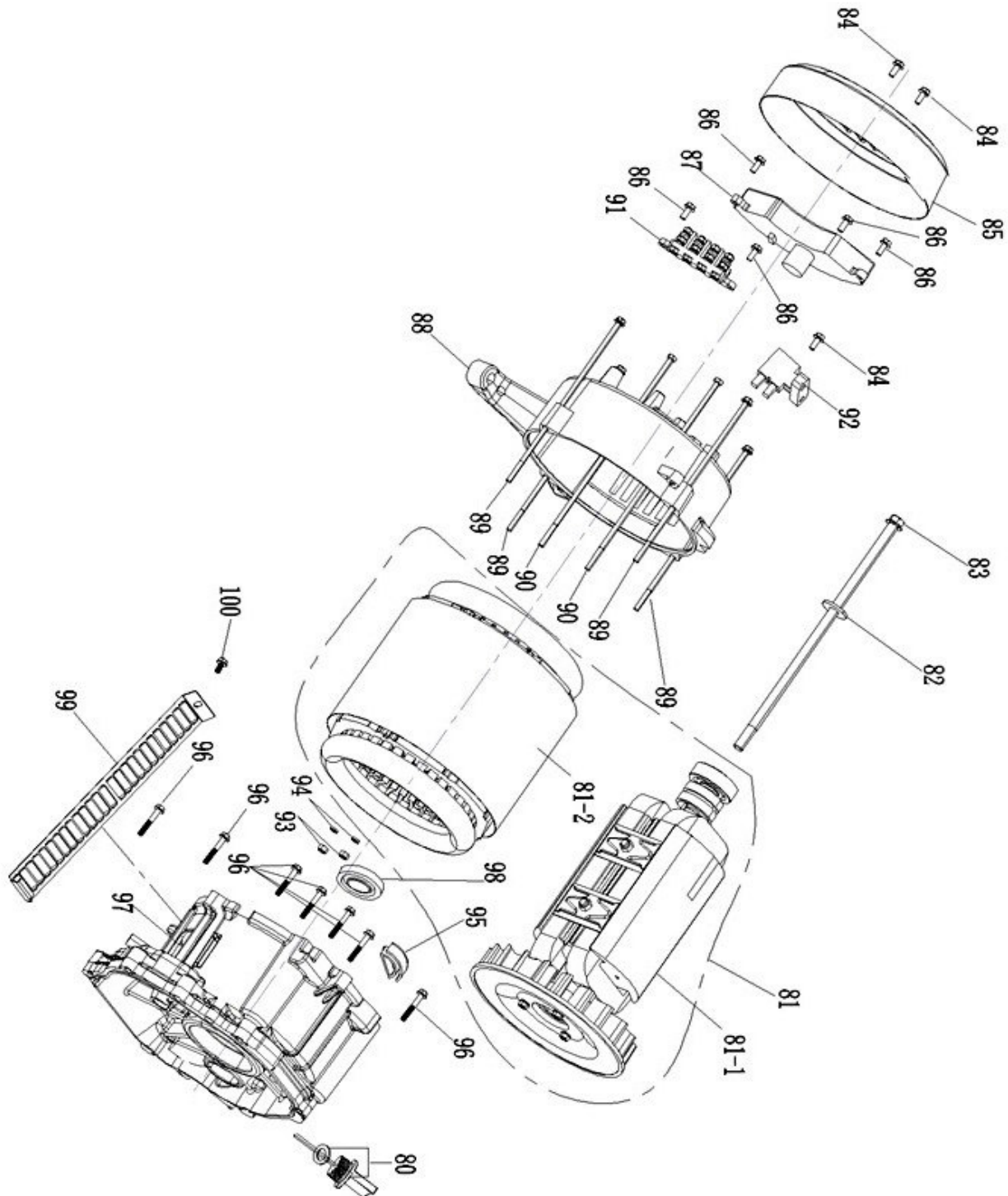


Fig. 34: Spare parts drawing 3 PG-E 60 SEA, PG-E 80 TEA and PG-E 90 SEA

Spare parts drawing 4: PG-E 60 SEA , PG-E 80 TEA and PG-E 90 SEA

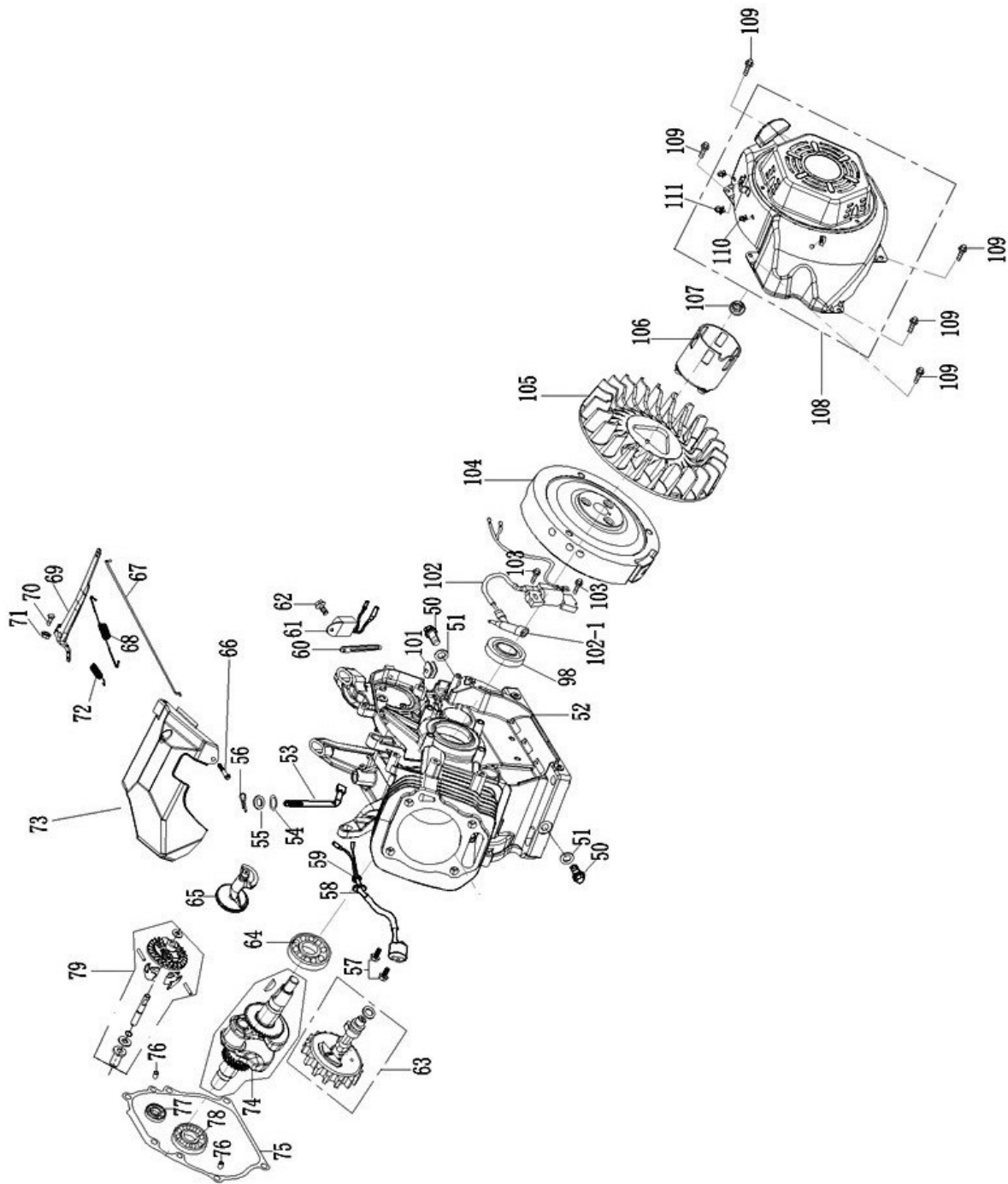


Fig. 35: Spare parts drawing 4 PG-E 60 SEA, PG-E 80 TEA and PG-E 90 SEA



Spare parts drawing 5: PG-E 60 SEA , PG-E 80 TEA and PG-E 90 SEA

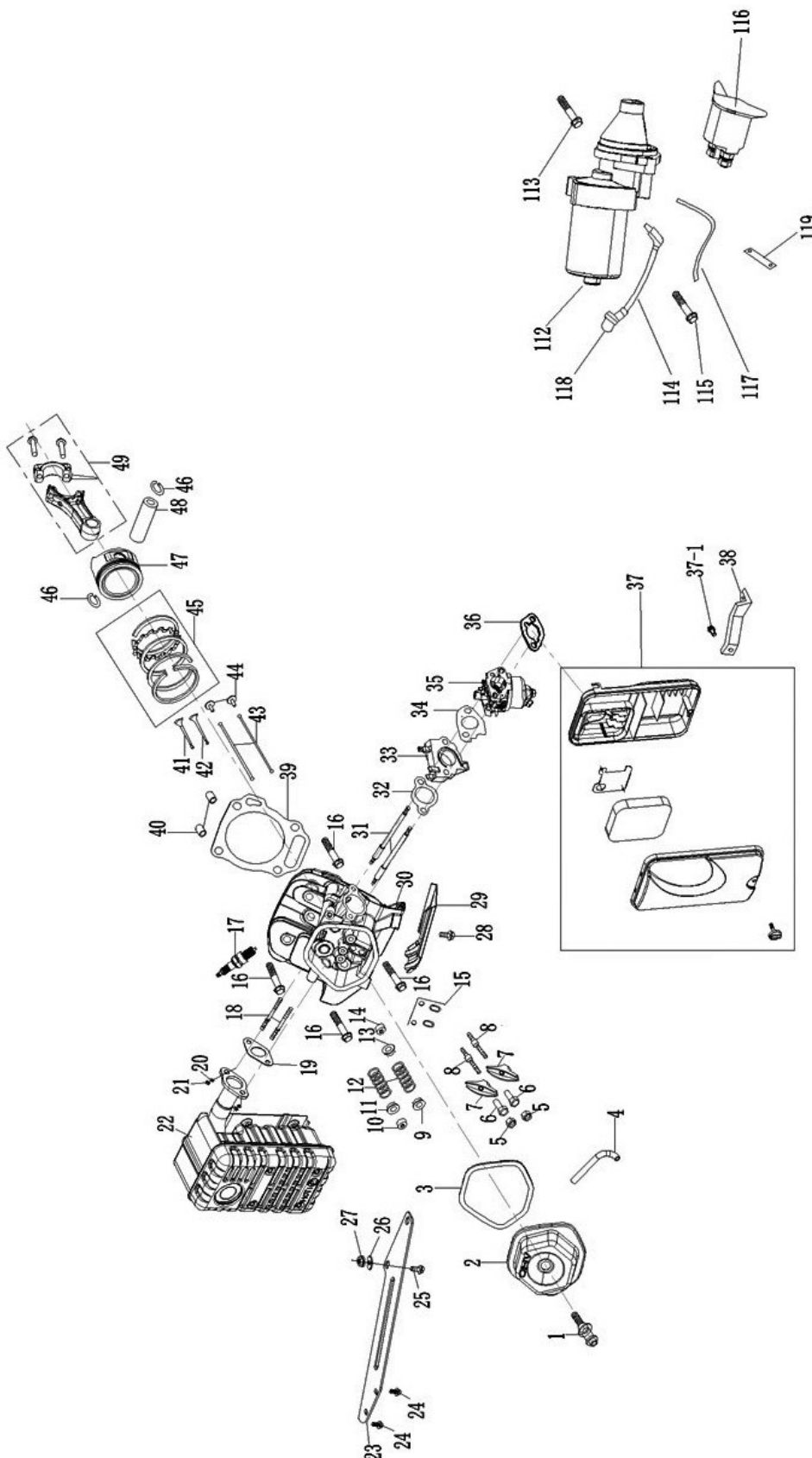


Fig. 36: Spare parts drawing 5 PG-E 60 SEA, PG-E 80 TEA and PG-E 90 SEA