

11.2 Spare parts drawings

In case of service, the following drawing shall help to identify the necessary spare parts. If necessary, send a copy of the parts drawing with the marked components to your authorised dealer.

Spare parts drawing PG-E 30 SRA - Complete assembly

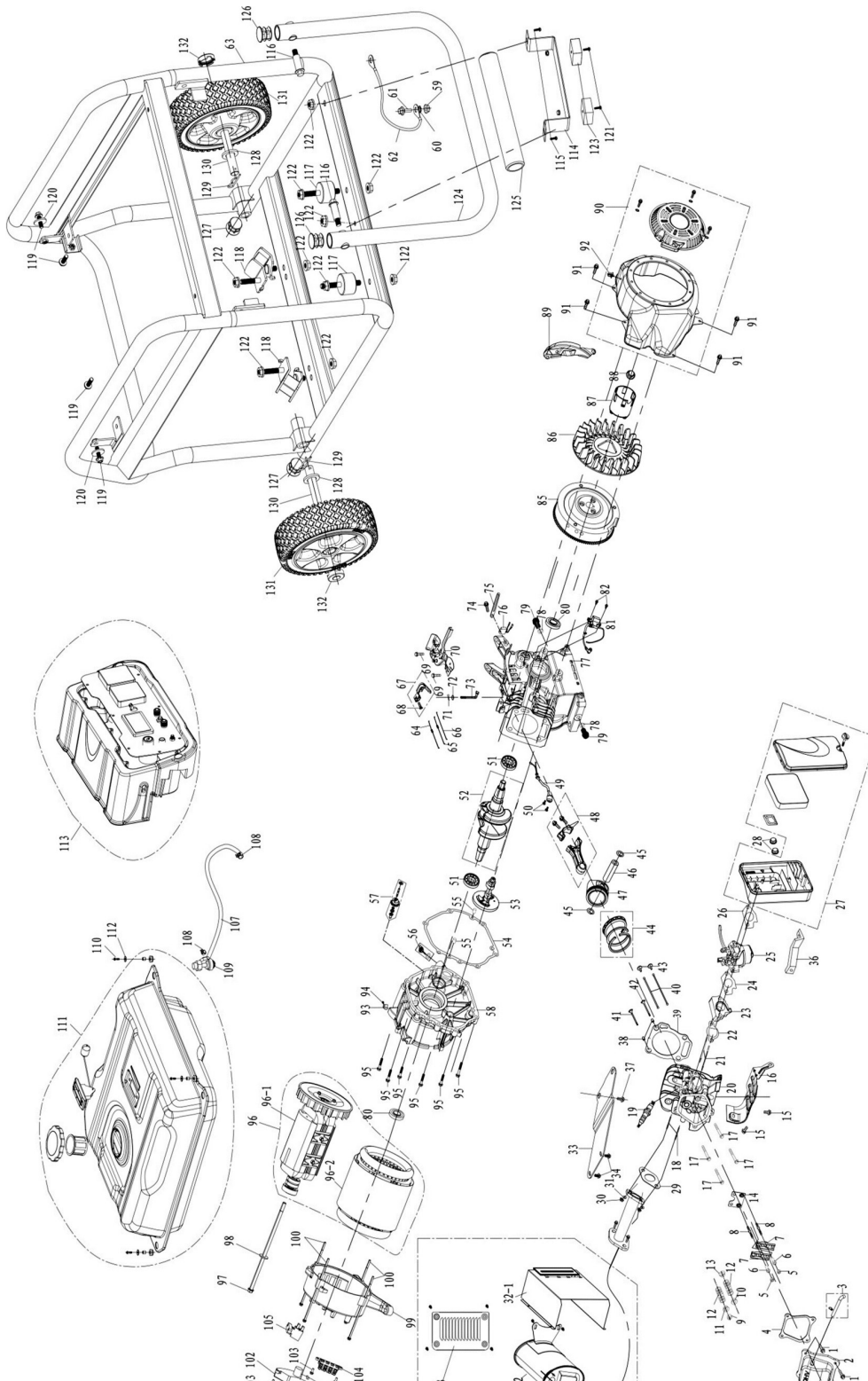
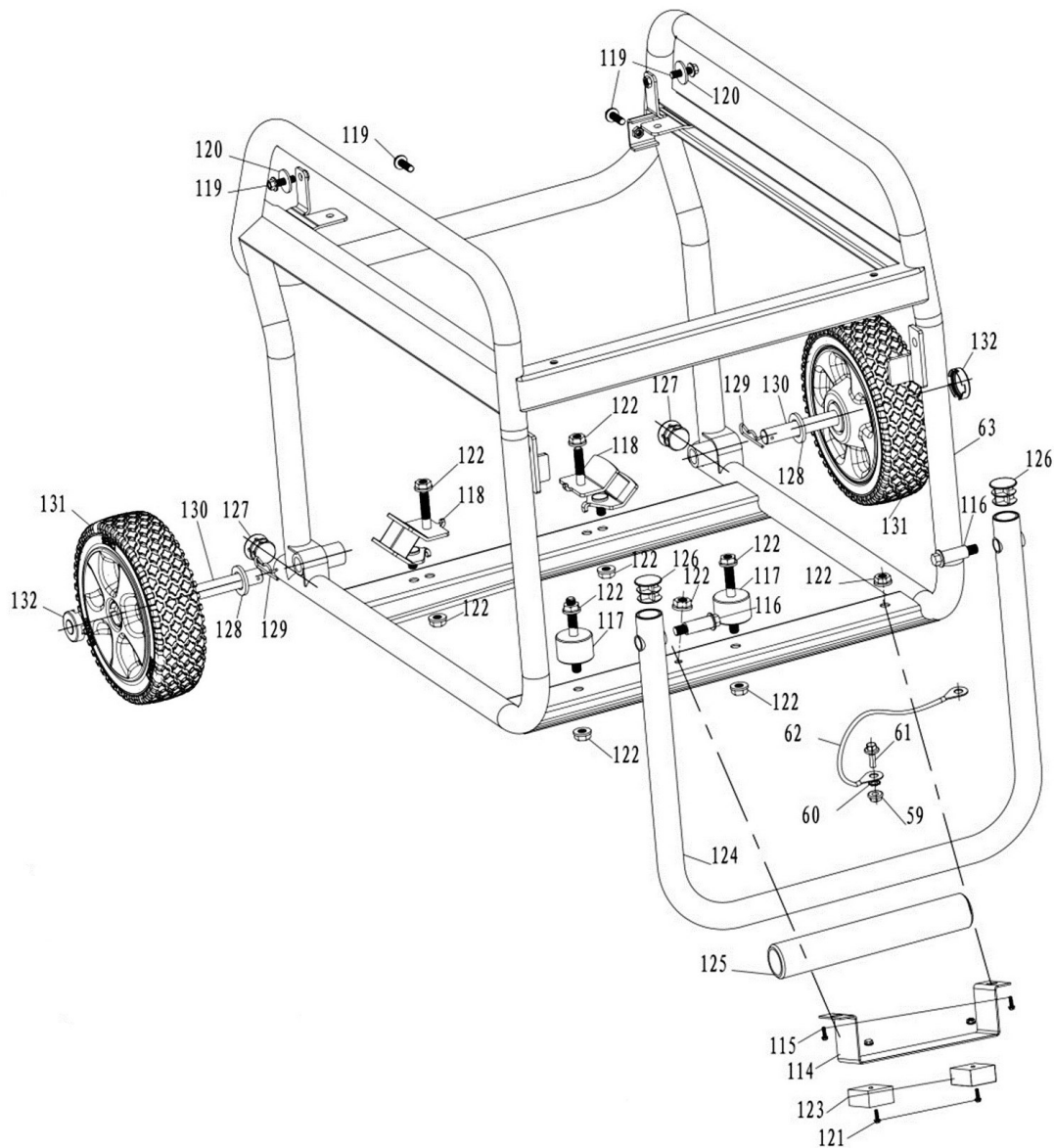


Fig. 22: Spare parts drawing PG-E 30 SRA - complete assembly

Spare parts drawing 1: PG-E 30 SRA



Spare parts drawing 2: PG-E 30 SRA

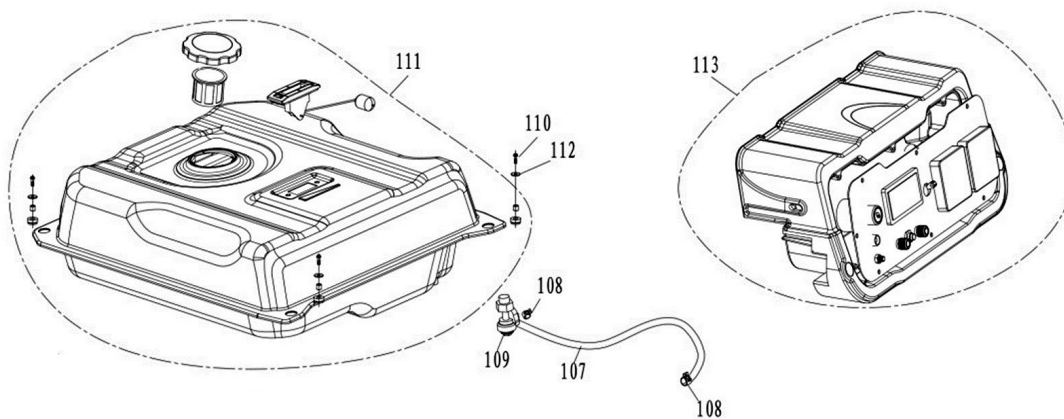


Fig. 23: Spare parts drawing 2 and Spare parts drawing 2 PG-E 30 SRA

Spare parts drawing 3: PG-E 30 SRA

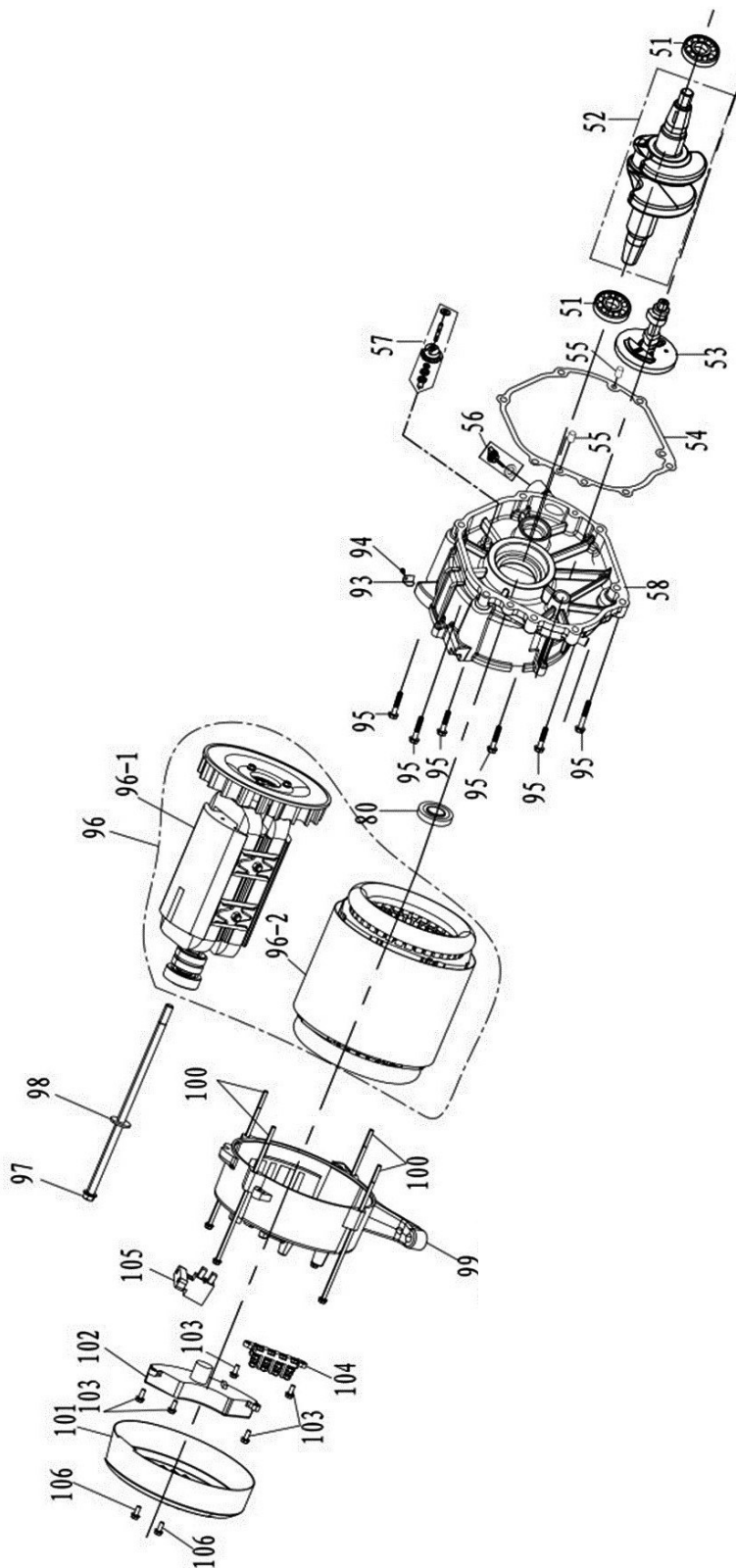


Fig. 24: Spare parts drawing 3 PG-E 30 SRA

Spare parts drawing 4: PG-E 30 SRA

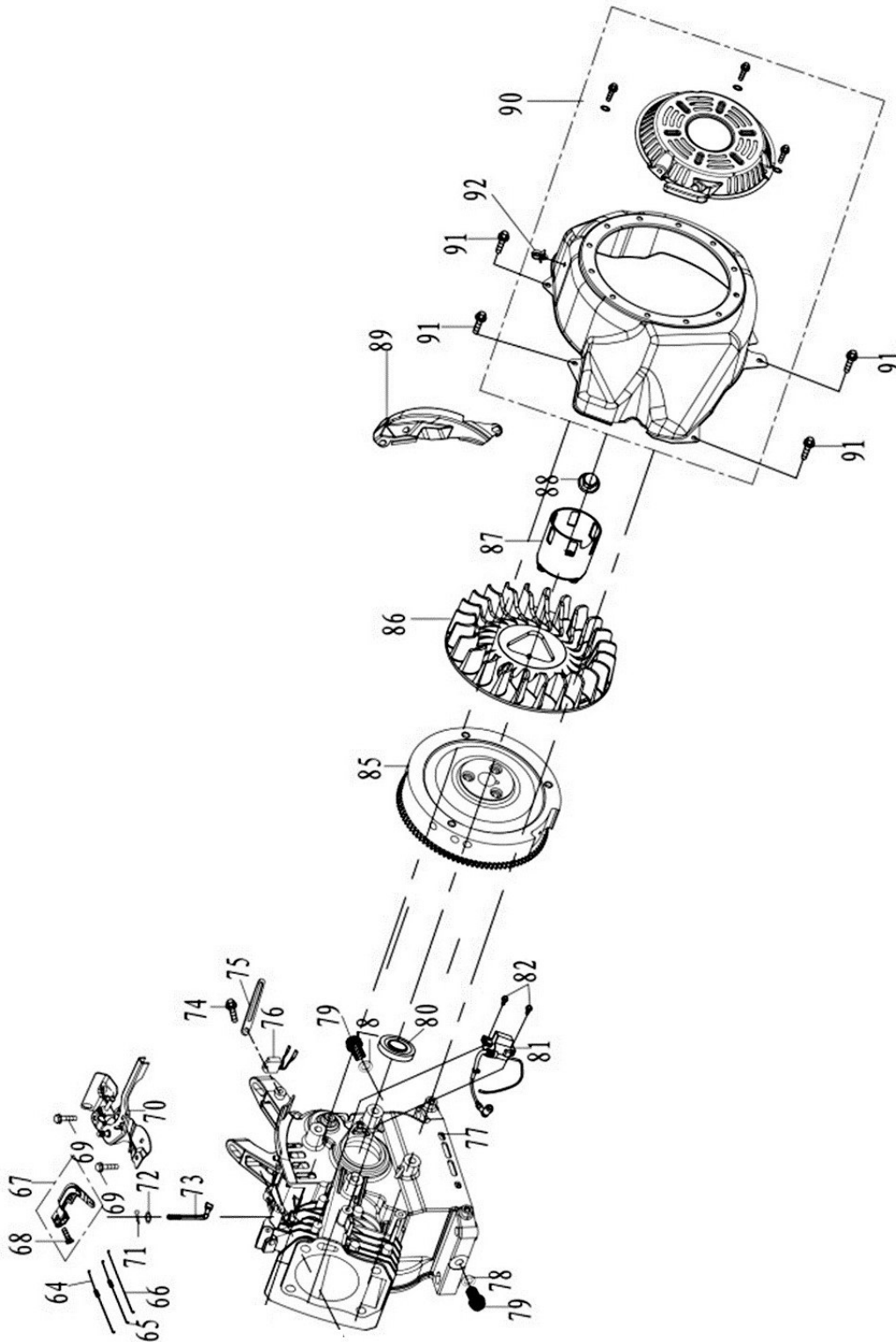


Fig. 25: Spare parts drawing 4 PG-E 30 SRA

Spare parts drawing 5: PG-E 30 SRA

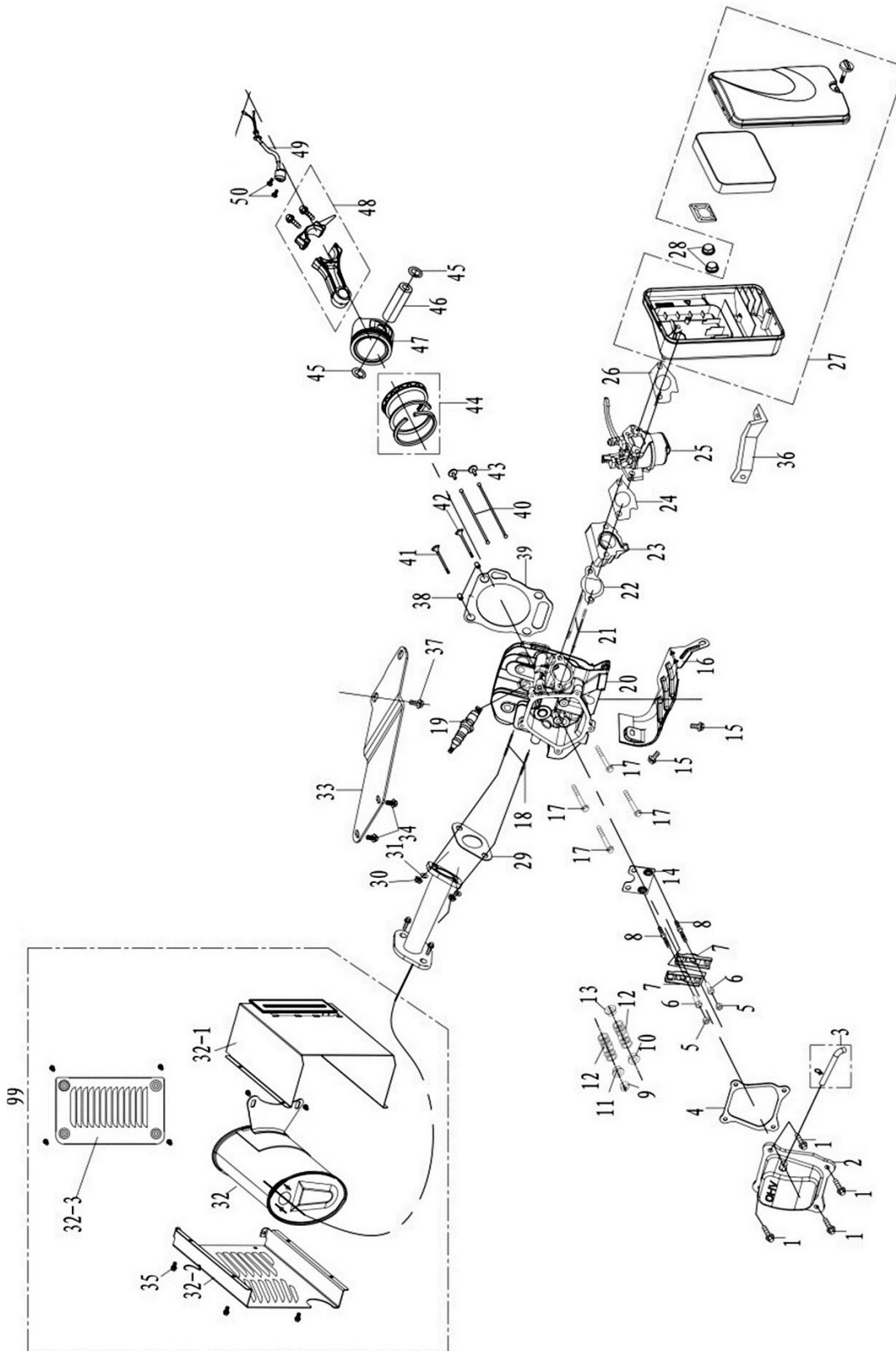


Fig. 26: Spare parts drawing 5 PG-E 30 SRA