

# Instruction Manual

## Hydraulic bottle jack

HSWH-5 TOP,-15 TOP,-10 TOP,-20 TOP,-30 TOP



HSWH-5 TOP



HSWH-30 TOP

HSWH-TOP-SERIES

## Imprint

### Product identification

Hydraulic bottle jack	Item number
HSWH-5 TOP	6211005
HSWH-10 TOP	6211010
HSWH-15 TOP	6211015
HSWH-20 TOP	6211020
HSWH-30 TOP	6211030

### Manufacturer

Stürmer Maschinen GmbH  
Dr.-Robert-Pfleger-Str. 26  
D-96103 Hallstadt/Bamberg

Fax: 0049 (0) 951 96555 - 55

E-Mail: [info@unicraft.de](mailto:info@unicraft.de)  
Internet: [www.unicraft.de](http://www.unicraft.de)

### Indication regarding the operating instructions

Original instructions  
according to DIN EN ISO 20607:2019

Edition: 30.05.2022  
Version: 1.04  
Language: English

Author: DM/FL

### Indication regarding the copyright

Copyright © 2022 Stürmer Maschinen GmbH, Hallstadt, Germany.

The contents of these operating instructions are the sole property of the company Stürmer Maschinen GmbH. Passing on as well as copying of this document, the use and distribution of its content are prohibited if not explicitly permitted. Contraventions are liable to compensation.

Subject to technical modifications and error.

## Contents

<b>1 Introduction .....</b>	<b>3</b>
1.1 Copyright .....	3
1.2 Customer service.....	3
1.3 Limitation of liability.....	3
<b>2 Safety.....</b>	<b>3</b>
2.1 Symbol explanation .....	3
2.2 Obligations of the operating company .....	4
2.3 Requirements to staff.....	5
2.4 Personal protective equipment .....	5
2.5 General safety regulations.....	5
2.6 Safety information for the operating personnel...	6
2.7 Safety labels on the hydraulic bottle jack.....	6
<b>3 Intended Use.....</b>	<b>6</b>
3.1 Predictable misuse .....	6
3.2 Residual risk .....	6
<b>4 Technical Data .....</b>	<b>7</b>
4.1 Type plate .....	7
<b>5 Transport, packaging, storage.....</b>	<b>8</b>
5.1 Transport .....	8
5.2 Packaging .....	8
5.3 Storage .....	8
<b>6 Description of the device.....</b>	<b>8</b>
<b>7 Before the first use.....</b>	<b>8</b>
<b>8 Operation .....</b>	<b>9</b>
8.1 Operating conditions.....	9
8.2 Test run.....	9
8.3 Workflow .....	9
<b>9 Care, maintenance and repair .....</b>	<b>11</b>
9.1 Care by cleaning.....	11
9.2 Maintenance and repair .....	11
9.3 Oil changes.....	11
<b>10 Disposal, recycling of used devices .....</b>	<b>11</b>
10.1 Decommissioning .....	11
10.2 Disposal of lubricants.....	12
<b>11 Troubleshooting .....</b>	<b>12</b>
<b>12 Hydraulic-Plan .....</b>	<b>13</b>
<b>13 Spare parts.....</b>	<b>13</b>
13.1 Ordering spare parts.....	13
<b>14 Spare parts drawing.....</b>	<b>14</b>
<b>15 EC Declaration of Conformity .....</b>	<b>15</b>

## 1 Introduction

You have made a good choice by purchasing the UNICRAFT hydraulic bottle jack.

**Read the operating manual thoroughly before commissioning the machine.**

It gives you information about the proper commissioning, intended use and safe and efficient operation and maintenance of your hydraulic bottle jack.

The operating manual is part of the hydraulic bottle jack package. Always keep this operating manual in the location where your hydraulic bottle jack is being operated. All local accident prevention regulations and general safety instructions for the operating range of your hydraulic bottle jack must also be complied with.

### 1.1 Copyright

The contents of these instructions are copyright. They may be used in conjunction with the operation of the hydraulic bottle jack. Any application beyond those described is not permitted without the written approval of Stürmer GmbH.

For the protection of our products, we shall register trademark, patent and design rights, as this is possible in individual cases. We strongly oppose any infringement of our intellectual property.

### 1.2 Customer service

Please contact your dealer if you have questions concerning your hydraulic bottle jack or if you need technical advice. They will help you with specialist information and expert advice.

**Germany:**  
Stürmer Maschinen GmbH  
Dr.-Robert-Pfleger-Str. 26  
D-96103 Hallstadt

**Repair service:**

Fax: 0049 (0) 951 96555-111  
E-Mail: [service@stuermer-maschinen.de](mailto:service@stuermer-maschinen.de)  
Internet: [www.unicraft.de](http://www.unicraft.de)

**Spare part orders:**

Fax: 0049 (0) 951 96555-119  
E-Mail: [ersatzteile@stuermer-maschinen.de](mailto:ersatzteile@stuermer-maschinen.de)

We are always interested in valuable experience and knowledge gained from using the application which then could be shared and be valuable to develop our products even further.

## 1.3 Limitation of liability

All information and notes in these operating instructions were summarised while taking applicable standards and rules, the state-of-the-art technology and our long-term knowledge and experiences into consideration.

In the following cases the manufacturer is not liable for damages:

- Non-observance of the operating instructions,
- Inappropriate use
- Use of untrained staff,
- Unauthorised modifications
- Technical changes,
- Use of not allowed spare parts.

The actual scope of delivery may deviate from the explanations and presentations described here in case of special models, when using additional ordering options or due to latest technical modifications.

The obligations agreed in the delivery contract, the general terms and conditions as well as the delivery conditions of the manufacturer and the legal regulations at the time of the conclusion of the contract are applicable.

## 2 Safety

This section provides an overview of all important safety packages for the protection of operating personnel as well as for safe and fault-free operation. Other task-based safety notes are included in the paragraphs of the individual phases of life.

### 2.1 Symbol explanation

#### Safety instructions

The safety notes in these operating instructions are highlighted by symbols. The safety notes are introduced by signal words which express the concern of the risk.



#### NOTE!

This combination of symbol and signal words indicates a possibly dangerous situation which may lead to property and environmental damages if they are not avoided.



### **DANGER!**

This combination of symbol and signal words indicates an imminently dangerous situation which may lead to death or severe injuries if they are not avoided.

### **WARNING!**

This combination of symbol and signal words indicates a possibly dangerous situation which may lead to death or severe injuries if they are not avoided.

### **CAUTION!**

This combination of symbol and signal words indicates a possibly dangerous situation which may lead to minor or light injuries if they are not avoided.

### **ATTENTION!**

This combination of symbol and signal words indicates a possibly dangerous situation which may lead to property and environmental damages if they are not avoided.

## **Tips and recommendations**



### **Tips and recommendations**

This symbol highlights useful tips and recommendations as well as information for an efficient and trouble-free operation.

It is necessary to observe the safety notes written in these operating instructions in order to reduce the risk of personal injuries and damages to property.

## **2.2 Obligations of the operating company**

### **Obligations of the operator**

The operating company is the person who operates the hydraulic bottle jack for business or commercial reasons by herself, or leaves it to a third party for use or application, and who bears the legal product responsibility for the protection of the user, the staff or for third parties.

### **Obligations of the operating company**

If the hydraulic bottle jack is used for commercial purposes, the operating company of the hydraulic bottle jack must comply with the legal working safety regulations. Therefore, the safety notes in this operating manual, as well as the safety, accident prevention and environment protection regulations applying for the area of application of the jack must be met. The following applies in particular:

- The operating company must be informed about the applying industrial safety regulations and further analyse hazards resulting from the special working conditions at the place of use of the hydraulic bottle jack. She must implement these in form of operating manuals for the operation of the hydraulic bottle jack.
- During the entire lifetime of the hydraulic bottle jack, the operating company must verify whether the operating manuals prepared by her correspond to the current status of the regulations, and must adapt these if necessary.
- The operating company must unambiguously regulate and determine the responsibilities for installation, operation, troubleshooting, maintenance and cleaning.
- The operating company must ensure that all persons who work with the hydraulic bottle jack, have read and understood this manual. Furthermore she must instruct the staff in regular intervals and inform them about the hazards.
- The operator must provide the necessary protective equipment to the staff and order the use of the necessary protective equipment in a binding way

Furthermore the operating company is responsible to keep the hydraulic bottle jack always in a technically flawless state. Thus, the following applies:

- The operator must ensure that the maintenance intervals described in this manual are kept.
- The operator must have all safety devices checked regularly for their good working order and their integrity.

## 2.3 Requirements to staff

### Qualifications

The different tasks described in this manual represent different requirements to the qualifications of the persons entrusted with these tasks.



#### **WARNING!**

#### **Danger in case of insufficient qualification of the staff!**

Insufficiently qualified persons cannot estimate the risks while using the hydraulic bottle jack and expose themselves and others to the danger of severe or lethal injuries.

- Have all works only performed by qualified persons.
- Keep insufficiently qualified persons out of the working area.

Only persons reliable working procedures can be expected from, are allowed to perform all works. Persons the responsiveness of which is affected by e. g. drugs, alcohol or medication, are not allowed to work with the machine.

The qualifications of the personnel for the different tasks are mentioned below:

### Operator

The operator is instructed by the operating company about the assigned tasks and possible risks in case of improper behaviour. Any tasks which need to be performed beyond the operation in the standard mode must only be performed by the operator if it is indicated in these instructions and if the operating company expressly commissioned the operator.

### Qualified personnel

Due to their professional training, knowledge and experience as well as their knowledge of relevant regulations the specialist staff is able to perform the assigned tasks and to recognise and avoid any possible dangers themselves.

### Manufacturer

Certain works may only be performed by specialist personnel of the manufacturer. Other personnel is not authorized to perform these works. Please contact our customer service for the execution of all arising work.

## 2.4 Personal protective equipment

The personal protective equipment serves to protect persons against impairments of safety and health while working. The staff member has to wear personal protective equipment while performing different tasks on and with the machine which are indicated in the individual paragraphs of these instructions.

The personal protective equipment is explained in the following paragraph:



### **Protective gloves**

The protective gloves serve to protect the hands against sharp components as well as against friction, abrasions or deep injuries.



### **Safety boots**

The safety boots protect the feet from being crushed, falling parts and slipping over on slippery ground.



### **Protective clothes**

The protective clothes are made of a tightly fitted fabric without the protruding parts of low tear strength.

## 2.5 General safety regulations



### **NOTE!**

In each case, the regulations or guidelines and standards valid in the country of use must be observed (in the respectively valid version).

In Germany at the moment  
DIN EN 1494: 2000 + A1: 2008: Mobile or mobile lifting equipment and related equipment.  
EC Machinery Directive 2006/42 / EC

Upgrading, conversion, maintenance and inspection activities may only be carried out by trained specialist personnel when the machine is not in use. Unauthorized modifications and modifications to the machine are not permitted for safety reasons.

In the case of a hydraulic repair, the storage facilities of the storage tanks must be emptied beforehand.

The operating staff must always make sure that the max. Carrying capacity is not exceeded.

Use the jack only on firm and level ground.

Never work under a raised vehicle unless you have taken further precautions, such as jack stands, wheel lock, etc., to prevent the vehicle from rolling, slipping or tipping over.

Do not disassemble the jack. Disassembly leads to subsequent malfunctions and defects. There is a risk of accident!

Do not change the setting of the safety valve.

Prior to each use of the jack, check that it is functional, in particular check for leaking hydraulic oil, tightness of all screws and valves and a complete oil charge.

Only use the jack to lift vehicles in accordance with their operating instructions. Improper use of the jack can cause serious material and personal injury and will void the warranty.

### 2.6 Safety information for the operating personnel

Any operation that impairs the safety of the machine must be avoided.

The operator is responsible for ensuring that no unauthorised persons work with the hydraulic bottle jack. The operator is obliged to inspect the hydraulic bottle jack at least once a day before use (daily) for externally visible damage and defects. Any changes (including operational behaviour) that impair safety must be reported immediately.

The operator must ensure that the machine is only operated in perfect condition at all times. If necessary, the operator must oblige the operating personnel to wear protective clothing, etc..

Safety devices must not be dismantled or put out of operation (even here, specific reference must be made to imminent hazards, e.g. imminent severe crushing). If it is necessary to dismantle safety devices during set-up, repair and maintenance, the safety devices must be reassembled immediately after completion of the maintenance or repair work.

### 2.7 Safety labels on the hydraulic bottle jack

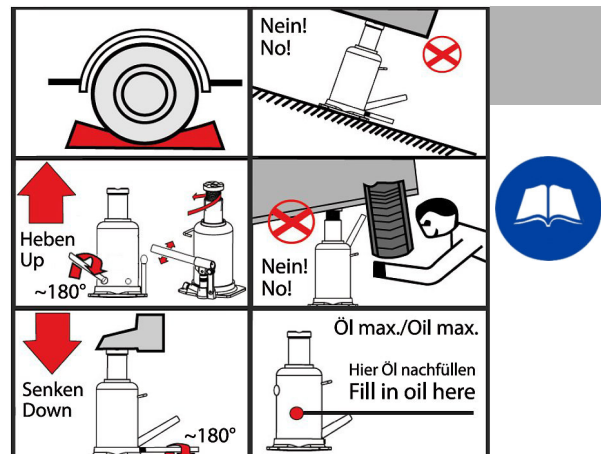


Fig. 1: Safety labels on the hydraulic bottle jack

## 3 Intended Use

The Hydraulic bottle jack is only used for lifting vehicles and for horizontal operation up to the specified maximum load. The Hydraulic bottle jack may only be operated by instructed persons.

Proper use also includes compliance with all information in this manual. Any use beyond the intended use or otherwise is considered misuse. Use of the device in other areas is considered improper use. For structural and technical changes to the Hydraulic bottle jack lift the company Stürmer Maschinen GmbH assumes no liability. Claims of any kind due to damage due to improper use are excluded.

### 3.1 Predictable misuse

When the intended use is used, the Hydraulic bottle jack does not allow any reasonably foreseeable misuse which could lead to dangerous situations involving personal injury.

### 3.2 Residual risk

Even if all safety regulations are observed, the following residual risks remain during operation of the hydraulic bottle jack

All persons working with the hydraulic bottle jack must be aware of these residual risks and follow the instructions to prevent these residual risks from leading to accidents or damage:

During operation there is a risk of crushing the upper and lower limbs.



## 4 Technical Data

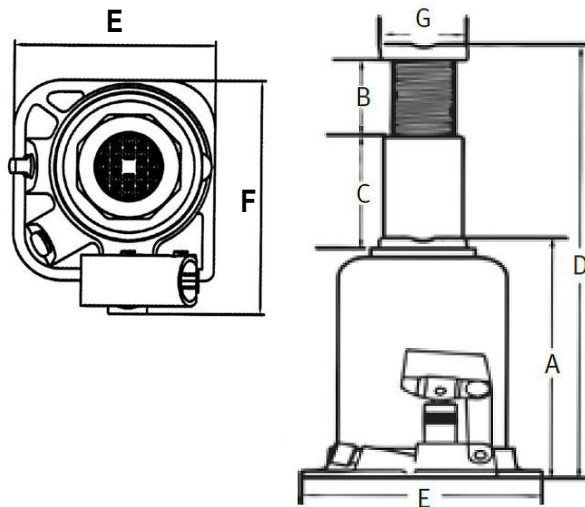


Fig. 2: Dimensions, Series HSWH-TOP SERIES

Type	HSWH-5 TOP	HSWH-10 TOP
Dimensions (Lx-BxH)	125 x 75 x 212-437 mm	144 x 90 x 219-444
Load-carrying capacity	5 t	10 t
Min. height (A)	212 mm	219
Stroke (B)	150 mm	150 mm
Adjustment height (C)	75 mm	75 mm
Lift height (D)	437 mm	444 mm
Footprint (ExF)	125 x 75 mm	144 x 90 mm
Piston Ø	28,5 mm	38 mm
Piston rod Ø	28,95 mm	37,25 mm
Weight	4,5 kg	6,4 kg

Type	HSWH-15 TOP	HSWH-20 TOP
Dimensions (Lx-BxH)	164 x 110 x 228-452 mm	172 x 120 x 234-459
Load-carrying capacity	15 t	20 t
Min. height (A)	228 mm	234
Stroke (B)	150 mm	150 mm
Adjustment height (C)	75 mm	75 mm
Lift height (D)	452 mm	459 mm
Footprint (ExF)	164 x 110 mm	172 x 120 mm

Type	HSWH-15 TOP	HSWH-20 TOP
Piston Ø	45 mm	61 mm
Piston rod Ø	44,25 mm	50,85 mm
Weight	8,8 kg	10,6 kg

Type	HSWH-30 TOP
Dimensions (Lx-BxH)	196 x 144 x 242-467 mm
Load-carrying capacity	30 t
Min. height (A)	242 mm
Stroke (B)	150 mm
Adjustment height (C)	75 mm
Lift height (D)	467 mm
Footprint (ExF)	196 x 144 mm
Piston Ø	69 mm
Piston rod Ø	57,55 mm
Weight	15,5 kg

### 4.1 Type plate



Fig. 3: Type plate HSWH 15 TOP

## 5 Transport, packaging, storage

### 5.1 Transport

Check the hydraulic bottle jack on delivery for any visible transportation damage. If you notice any damage to the device please report this immediately to the carrier or dealer.



#### NOTE!

The hydraulic bottle jack should be protected from humidity.

### 5.2 Packaging

All used packaging materials and packaging aids are recyclable and should be taken to a materials recycling depot to be disposed of.

The delivery packaging is made of cardboard, so please dispose carefully by having it chopped up and given to the recycling collection.

The film is made of polyethylene (PE) and the cushioned parts of polystyrene (PS). Deliver these substances to a collection point for recyclable materials or to the waste disposal company which looks after your region.

### 5.3 Storage

Oil the hydraulic bottle jack and store it in a frost-free and dry environment.

Only store the hydraulic bottle jack with the cylinder retracted and with the drain valve closed. Do not place anything on the hydraulic bottle jack.

## 6 Description of the device

Illustrations in this manual may differ from the original.



Fig. 4: Description of the HSWH 30 TOP

- 1 Extension screw
- 2 Hydraulic cylinder
- 3 Carrying handle
- 4 Pump
- 5 Pump piston
- 6 Release valve
- 7 Lifting jack foot
- 8 Pump lever

## 7 Before the first use

Before using the jack for the first time, any air that may have accumulated must be removed from the system. To do this, follow these steps:

Step 1: Insert the lever into the discharge key and turn it clockwise all the way around.

Step 2: Insert the lever into the holder and activate the stamp carriage lifter several times. This achieves internal lubrication and the outflow of accumulated air.

Step 3: Insert the lever into the discharge key again and close it clockwise until it stops.



#### DANGER!

Verify that all safety precautions detailed in Section 2 are met before lifting a load.



## 8 Operation



### DANGER!

#### Danger to life due to falling of the load!

Falling loads can cause serious injury or even death.

- Never exceed the specified maximum load.
- Never move the lifted load.
- Never work under the lifted load without this being additionally secured with racks.
- Observe the manufacturer's instructions for the load at the point of origin of the stamp jack on the load.
- Distribute the weight centrally on the saddle of the stamp jack.
- Lift loads only on level, even and solid ground with the carriage jack.
- With vehicles to be lifted, set the wheels straight and lock with sufficiently sized wedges.
- Do not lift people individually or together with the load.
- When leaving the workplace, lower the load, if it is not additionally secured with racks.



### DANGER!

- Avoid overload. Check that the load never exceeds the value indicated on the nameplate
- Never use a rusted or damaged stamp jack.



**Use protective gloves!**



**Use safety boots!**



**Wear protective clothes!**



### NOTE!

- The operating personnel must be familiar with the operation and the functions as well as the safety regulations when operating the hydraulic bottle jack
- The operator must ensure the necessary instruction of the operating personnel.

All work to start up the Hydraulic bottle jack must only be carried out by specialists.

All functions of the Hydraulic bottle jack must be checked.

## 8.1 Operating conditions

The work area must be dry, fire and explosion proof and free of corrosive and toxic substances.

## 8.2 Test run

Check the hydraulic bottle jack for tightness of the hydraulic system and for any damage.

Perform a test with all functions checked before operation.

## 8.3 Workflow

### 8.3.1 Lifting of a vehicle

Step 1: Close the open drain valve (Item 2, Fig. 5) by turning the narrow end of the pump lever to the right (Item 1, Fig. 5).

Step 2: Place the jack under the vehicle to be lifted under the jacking points anticipated for the jack (refer to the owner's manual of your vehicle). If necessary, turn the expansion screw (Item 3, Fig. 5) out of the lifting punch by turning it counterclockwise until it touches the vehicle. So the exact pickup point can be determined.

Step 3: Insert the pump lever (Item 1, Fig. 5) into the pump (Item 4, Fig. 5) and move the lever evenly up and down. Lift the vehicle up to the desired height.

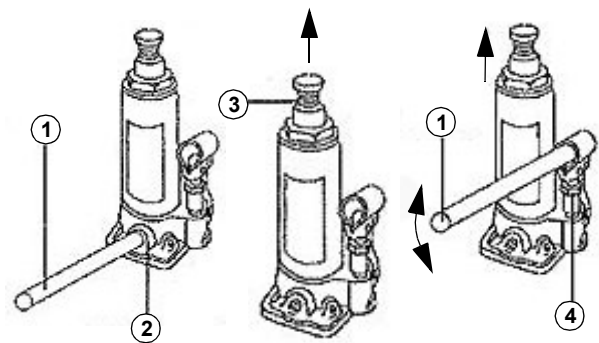


Fig. 5: Workflow



### WARNING!

Rapid opening of the drain valve can result in high loads and damage to the hydraulic system. Personal injury and material damage could be caused.



### ATTENTION!

#### Risk of crushing!!

When working with the hydraulic bottle jack, it can cause bruising of the upper and lower limbs.

### 8.3.2 Lower the vehicle

Step 1: Open the drain valve by inserting the narrow end of the pump lever into the valve and slowly turning the pump lever counterclockwise.

Step 2: When the vehicle is completely lowered, pull out the jack underneath. If the extension screw is unscrewed, turn it right before you remove the jack by turning it clockwise until it stops.

### 8.3.3 Horizontal operation

Step 1: Close the open drain valve (Item 2, Fig. 5) by turning the narrow end of the pump lever to the right (Item 1, Fig. 5).

Step 2: Place the jack between the items. Make sure that the horizontal operation is only possible when the pump lever is in the lower position (Fig.6). If necessary, turn the extension screw (Item 3, Fig. 5) out of the lifting punch by turning it counterclockwise until it touches the object. Thus, the exact pick-up point can be determined, and a secure position can be ensured.

Step 3: Insert the pump lever (Item 1, Fig. 5) into the pump (Item 4, Fig. 5) and move the lever evenly to the left and right to push the items apart.



Fig. 6: Horizontal operation



#### **DANGER!**

The stamp jack can be operated horizontally only in the position shown (Fig.6), with the pump lever down, otherwise the oil supply of the pump is interrupted.

### 8.3.4 Refill of the hydraulic oil

Step 1: Position the hydraulic bottle jack vertically.

Step 2: Check that the hydraulic bottle jack is completely lowered. If necessary, lower it as far as it will go.

Step 3: Screw out the filling plug in the housing.

Step 4: Fill the cylinder with high-quality hydraulic oil up to the lower edge of the filling opening. (see Fig.7)

Step 5: Replace the filling plug into the housing.

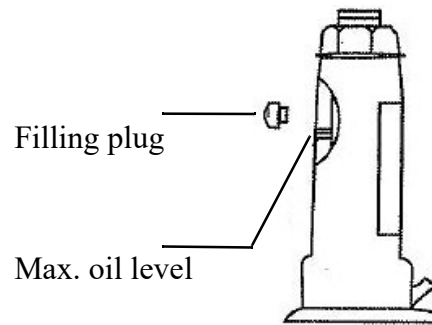


Fig. 7: Refill of the hydraulic oil

### 8.3.5 Lubrication

Regularly lubricate the moving parts and the thread of the extension screw for a safe operation of the hydraulic bottle jack.

### 8.3.6 Venting

After some time or after oil has been added, air bubbles can form in the hydraulic bottle jack and impair its function.

#### **The hydraulic cylinder is vented as follows:**

Step1: Open the drain valve and remove the filling plug.

Step 2: Operate the pump a few times to squeeze the air out of the system.

Step 3: Close the drain valve and insert the filling plug. Now the hydraulic bottle jack must function easily and properly again. If necessary, repeat the procedure again.

### 8.3.7 Rust prevention

When the hydraulic bottle jack is not use, prevent the bare parts from rusting by fully lowering the piston, screwing in the extension screw and lowering the pump. Avoid contact of the moving parts with the dirt. If the hydraulic bottle jack is still dirty, clean it carefully and grease the moving parts.

## 9 Care, maintenance and repair

### 9.1 Care by cleaning

The hydraulic bottle jack must always be kept in a clean condition.



**Use protective gloves!**



#### NOTE!

Never use strong cleaning agents for any cleaning tasks. This may damage or destroy the device.

All plastic and lacquered surfaces should be cleaned using a soft, damp cloth and a neutral cleaning agent. Remove any excess lubricant or leaked oil using a dry, lint-free cloth. Remove surplus grease or leaked oil with a dry, lint-free cloth.

### 9.2 Maintenance and repair



#### DANGER!

Maintenance and repair work may only be performed by instructed persons.

If the hydraulic bottle jack does not work properly, contact a dealer or our customer service. The contact details can be found in chapter 1.2 Customer Service.

All safety and protection equipment must be reinstalled immediately after the repair and maintenance work has been completed.

Step 1: Check the hydraulic bottle jack for external damage and the piston for signs of rust before each use.

Step 2: Lubricate all moving parts of the hydraulic bottle jack regularly (recommended value 1x monthly) with high quality grease and oil the piston.

Step 3: Check the hydraulic oil level at regular intervals after unscrewing the oil filler plug. If necessary, top up the hydraulic oil and then bleed the hydraulic system.



#### DANGER!

Only use the hydraulic oil of the same type! Never mix the different types of oil!

Step 4: Ensure that all safety labels on the hydraulic bottle jack are clearly legible.

### 9.3 Oil changes

To ensure proper functioning of the hydraulic bottle jack, change the oil regularly.

Step 1: Retract the piston completely. Provide an oil collecting container.

Step 2: Unscrew the filling plug, remove the old oil and allow it to drain into the tank. Make sure that no dirt can get in the hydraulic system!

Step 3: After the used oil has been completely drained, set up the hydraulic bottle jack and top up with a new hydraulic oil. Only use new, clean oil for this purpose.



#### ATTENTION!

Only use the hydraulic oil of the same type!  
Never mix the different types of oil!

Step 4: Screw in the filling plug. Then bleed the hydraulic system.

Step 5: Check all function of the hydraulic bottle jack.



#### NOTE!

The removed oil must be disposed of separately. Information on this can be obtained from the lubricant manufacturer.

## 10 Disposal, recycling of used devices

Please take care in your own interest and in the interest of the environment that all component parts of the machine are only disposed of in the intended and permitted way.

### 10.1 Decommissioning

Immediately decommission used machines in order to avoid later misuse and endangering of the environment or of persons.

Step 1: Eliminate all environmentally hazardous operating materials from the used device.

Step 2: If required, disassemble the machine into easy-to-handle and usable components and parts.

Step 3: Dispose of machine components and operating materials by the disposal channels provided.

## 10.2 Disposal of lubricants



Remove any escaping, used or excess oil / grease from the lubricated oil filler neck / lubrication points.  
The disposal instructions for the lubricants used are provided by the lubricant manufacturer. If necessary, ask for the product-specific data sheets.

## 11 Troubleshooting

Fault / Possible cause	The hydraulic bottle jack can not be adjusted to the max. pump height.	The hydraulic bottle jack does not lift the defined	The hydraulic bottle jack will release itself under load	Oil leaks out of the oil screw	Heavy pumping	Pump lever moves up and down under load	The hydraulic bottle jack does not reach the full height	The hydraulic bottle jack is leaking, hydraulic oil has leaked..
Drain valve is not properly closed.		X	X					
Too little oil. Add hydraulic oil.		X			X		X	
Too much oil. Drain oil from the filling opening.				X				
Air in the cylinder. Open the drain valve and pump several times. Close the drain valve. Repeat several times if necessary.		X			X			
Valves are closed or dirty. To flush them freely again, push the piston down and close the drain valve. Lift the piston several times by hand, open the drain valve.		X	X		X			
Insufficient oil in the tank. Check the oil level (see chapter "Maintenance") and top up if necessary.	X							
Seals are worn out. Replace worn gaskets, check all gaskets if necessary.								X

## 12 Hydraulic-Plan

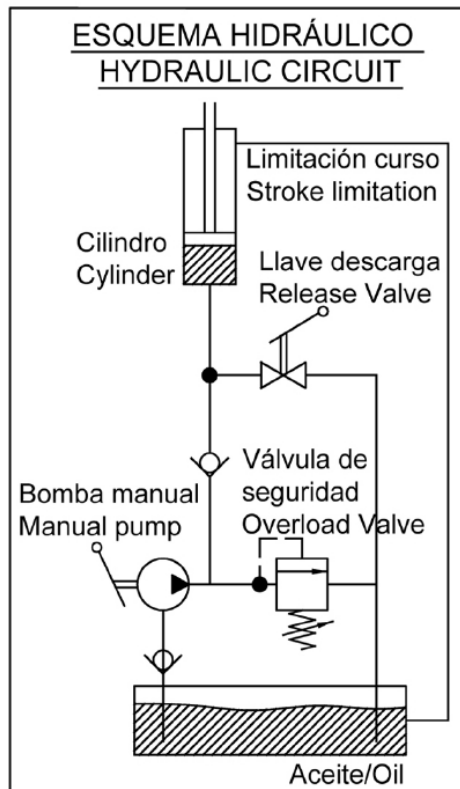


Fig. 8: Hydraulic-Plan

## 13 Spare parts



### DANGER!

#### Danger of injury by the use of wrong spareparts!

Dangers may result for the user and damages as well as malfunctions may be caused by using wrong or damaged spare parts.

- Only use original spare parts of the manufacturer or spare parts admitted by the manufacturer.
- Always contact the manufacturer in case of uncertainties.



### Tips and recommendations

The manufacturer's warranty will become null and void if non-permissible spare parts are used.

### 13.1 Ordering spare parts

The spare parts may be purchased with the authorised dealer or directly with the manufacturer. Please find the corresponding contact data in Chapter 1.2 Customer service.

Indicate the following basic information for requests or orders of spare parts:

- Type of device
- Item No.
- Position No.
- Year of construction:
- Quantity
- Required mode of dispatch (mail, freight, sea, air, express)
- Address of dispatch

Spare part orders which do not include the above indications may not be taken into consideration. If the indications regarding the mode of dispatch are missing, the product is dispatched at the discretion of the supplier.

You will find information regarding the device type, item No. and year of manufacture on the type plate fixed to the Device.

#### Example

The hand lever for the Hydraulic bottle jack HSWH 5-TOP must be ordered. The hand lever has the number 2 in the spare parts drawing 1.

By ordering spare parts, send a copy of the spare parts drawing (1) with the marked part (hand lever) and marked position number (2) to the dealer or spare parts department and provide the following information:

- Type of device: **Hydraulic bottle jack HSWH-5 TOP**
- Item number: **6211005**
- Position number: **2**
- Drawing number: **1**

#### The item number of your device:

HSWH-5 TOP	6211005
HSWH-10 TOP	6211010
HSWH-15 TOP	6211015
HSWH-20 TOP	6211020
HSWH-30 TOP	6211030

## 14 Spare parts drawing

In case of service, the following drawing shall help to identify the necessary spare parts. If necessary, send a copy of the parts drawing with the marked components to your authorised dealer.

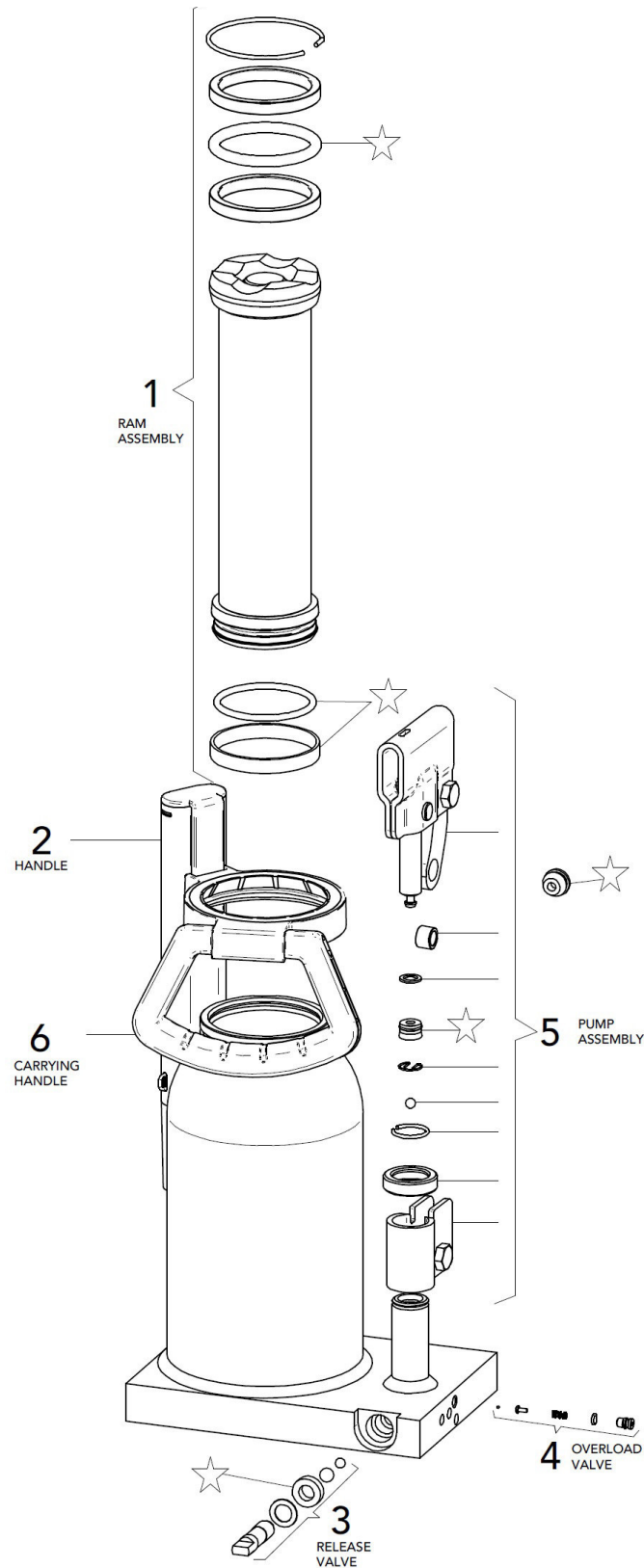


Fig. 9: Spare parts drawing



## 15 EC - Declaration of Conformity

According to machine directive 2006/42/EC Annex II 1.A

**Manufacturer/distributing company:** Stürmer Maschinen GmbH  
Dr.-Robert-Pfleger-Str. 26  
D-96103 Hallstadt

hereby declares that the following product

**Product group:** Unicraft® Werkstatttechnik

**Machine type:** Hydraulic bottle jack

<b>Designation of the device *:</b>	<input type="checkbox"/> HSWH-5 TOP	<b>Item number *:</b> <input type="checkbox"/> 6211005
	<input type="checkbox"/> HSWH-10 TOP	<input type="checkbox"/> 6211010
	<input type="checkbox"/> HSWH-15 TOP	<input type="checkbox"/> 6211015
	<input type="checkbox"/> HSWH-20 TOP	<input type="checkbox"/> 6211020
	<input type="checkbox"/> HSWH-30 TOP	<input type="checkbox"/> 6211030

**Serial number\*:** \_\_\_\_\_

**Year of manufacture\*:** 20\_\_\_\_\_

\* fill in these fields using the information on the nameplate

complies with all relevant provisions of the above mentioned directive - including their applicable modifications at the time of the declaration.

**The following harmonized standards were applied:**

DIN EN 1494:2009-05	Mobile or movable jacks and associated lifting equipment; German version EN 1494:2000+A1:2008
---------------------	--

**Responsible for the documentation:** Kilian Stürmer, Stürmer Maschinen GmbH,  
Dr.-Robert-Pfleger-Str. 26, D-96103 Hallstadt

Hallstadt, 30.05.2022



Kilian Stürmer  
Managing Director



