





Operating Instructions

Folding Machine

-  FSBM 1020-25 E, FSBM 1270-20 E
-  FSBM 1520-15 E, FSBM 2020-12 E
-  FSBM 1020-20 S2, FSBM 1270-20 HS2
-  FSBM 1020-20 HSG



FSBM 1270-20 HS2

FSBM-SERIES

Imprint

Product Identification

Type of machine	Article Number
FSBM 1020-25 E	3772125
FSBM 1270-20 E	3772127
FSBM 1520-15 E	3772129
FSBM 2020-12 E	3772130
FSBM 1020-20 S2	3772102
FSBM 1270-20 HS2	3772128
FSBM 1020-20 HSG	3770103

Manufacturer

Stürmer Maschinen GmbH
Dr.-Robert-Pfleger-Str. 26
D-96103 Hallstadt/Bamberg

Fax: 0049 (0) 951 96555 - 55

E-Mail: info@metallkraft.de
Internet: www.metallkraft.de

Indications regarding the operating instructions

Original Instructions

Edition: 28.09.2020
Version: 1.06
Language: English

Author: ES/MS

Indications regarding the copyright

Copyright © 2020 Stürmer Maschinen GmbH,
Hallstadt, Germany.

The contents of these operating instructions is the sole property of the company Stürmer Maschinen GmbH. Passing on as well as copying of this document, the use and distribution of its content are prohibited if not explicitly permitted. Contraventions are liable to compensation.

Subject to technical modifications and error.

Content

Imprint	2
Content	2
1 Introduction	3
1.1 Copyright	3
1.2 Customer Service	3
1.3 Limitation of Liability	3
2 Safety	3
2.1 Symbol Explanation	3
2.2 Qualification of personnel	4
2.3 Personal protective equipment	4
2.4 General safety notes	5
2.5 Safety signs on the machine	5
2.6 Intended use	5
3 Technical Data	6
3.1 Type plate	6
3.2 Table	6
4 Transport, Packaging, Storage	7
4.1 Delivery and Transport	7
4.2 Packaging	8
4.3 Storage	8
5 Description of the machine	8
5.1 Scope of delivery	8
5.2 Accessory for option	9
6 Installation and Operation	9
6.1 Installation	9
6.2 Mounting of the back gauge (optional)	10
7 Operation	11
8 Care, maintenance and repair	12
8.1 Care by cleaning	12
8.2 Maintenance and repair	12
8.3 Troubleshooting	12
9 Disposal, recycling of used devices	13
9.1 Decommissioning	13
9.2 Disposal of lubricants	13
10 Spare parts	13
10.1 Order of spare parts	13
10.2 Spare parts drawings	14
11 EC Declaration of Conformity	18
12 Notes	19

1 Introduction

You have made a good choice by purchasing the Folding Machine made by METALLKRAFT.

Thoroughly read the operating instructions before commissioning the machine.

It informs you about the proper commissioning, the intended use as well as the safe and efficient operation and maintenance of your Folding Machine.

The operating instructions are part of the Folding Machine. Always keep it at the place of use of the Folding Machine. Furthermore, the local accident prevention regulations and the general safety notes are applicable for the field of application of the Folding Machine.

The illustrations in these operating instructions serve the general comprehension and may deviate from the actual type.

1.1 Copyright

The contents of these instructions are copyright. Their application is admissible in the frame of the Folding Machine utilisation. An application beyond the described application is not allowed without written approval of the manufacturer.

For the protection of our products, we shall register trademark, patent and design rights, as this is possible in individual cases. We strongly oppose any infringement of our intellectual property

1.2 Customer Service

Please contact your dealer if you have questions on the machine or if you need technical advice. They will help you with specialist information and expert advice.

Germany:

Stürmer Maschinen GmbH
Dr.-Robert-Pfleger-Str. 26
D-96103 Hallstadt

Repair Service:

Fax: 0049 (0) 951 96555-111
E-Mail: service@stuermer-maschinen.de

Spare part orders:

Fax: 0049 (0) 951 96555-119
E-Mail: ersatzteile@stuermer-maschinen.de

We are always interested in valuable experience and knowledge gained from using the application, which then could be shared and be valuable to develop our products even further.

1.3 Limitation of Liability

All information and notes in these operating instructions were summarised taking the applicable standards and rules, the state-of-the-art and our long-term knowledge and experiences into consideration.

the following cases the manufacturer is not liable for damages:

- Non-observance of the operating instructions,
- Inappropriate use,
- Use of untrained staff,
- Unauthorised modifications,
- Technical changes,
- Use of not allowed spare parts.

The actual scope of delivery may deviate from the explanations and presentations described here in case of special models, when using additional ordering options or due to latest technical modifications.

The obligations agreed in the delivery contract, the general terms and conditions as well as the delivery conditions of the manufacturer and the legal regulations at the time of the conclusion of the contract are applicable.

2 Safety

This paragraph will give you an overview of all important safety packages for the protection of the people using it well as for a safe and undisturbed operation. Other task-based safety notes are included in the individual chapters.

2.1 Symbol Explanation

Safety Instructions

The safety notes in these operating instructions are highlighted by symbols. The safety notes are introduced by signal words which express the concern of the risk.



WARNING!

This combination of symbol and signal words indicates an imminently dangerous situation which may lead to death or severe injuries if they are not avoided.



CAUTION!

This combination of symbol and signal words indicates a possibly dangerous situation which may lead to minor or light injuries if they are not avoided.



ATTENTION!

This combination of symbol and signal words indicates a possibly dangerous situation which may lead to property and environmental damages if they are not avoided.



NOTE!

This combination of symbol and signal words indicates a possibly dangerous situation which may lead to property and environmental damages if they are not avoided.

Tips and recommendations



Tips and recommendations

This symbol highlights useful tips and recommendations as well as information for an efficient and trouble-free operation.

It is necessary to observe the safety notes quoted in these operating instructions in order to reduce the risks for personal injuries and damages to property.

2.2 Qualification of personnel

The different tasks described in this manual represent different requirements to the qualification of the persons entrusted with these tasks.



WARNING!

Danger in case of insufficient qualification of the staff!

Insufficiently qualified persons cannot estimate the risks while using the machine and expose themselves and others to the danger of severe injuries.

- Have all works only performed by qualified persons.
- Keep insufficiently qualified persons and children out of the working area.

Only persons reliable working procedures can be expected from, are allowed to perform all works. Persons the responsiveness of which is affected by e. g. drugs, alcohol or medication, are not allowed to work with the machine.

The qualifications of the personnel for the different tasks are mentioned below:

Operator:

The operator is instructed by the operating company about the assigned tasks and possible risks in case of improper behaviour. Any tasks which need to be performed beyond the operation in the standard mode must only be performed by the operator if it is indicated in these instructions and if the operating company expressly commissioned the operator.

Specialist staff:

Due to their professional training, knowledge and experience as well as their knowledge of relevant regulations the specialist staff is able to perform the assigned tasks and to recognise and avoid any possible dangers themselves.

Manufacturer:

Certain works may only be performed by specialist personnel of the manufacturer. Other personnel is not authorized to perform these works. Please contact our customer service for the execution of all arising work.

2.3 Personal protective equipment

The personal protective equipment serves to protect persons against impairments of safety and health while working. The staff has to wear personal protective equipment while performing different works on and with the appliance which are indicated in the individual paragraphs of these instructions.

The personal protective equipment is explained in the following paragraph:



Protective gloves

The protective gloves serve to protect the hands against sharp components as well as against friction, abrasions or deep injuries.



Safety boots

The safety boots protect the feet against crushes, falling parts and slipping over on slippery underground.



Protective clothes

The protective clothes are tight clothes of little tensile strength.

2.4 General safety notes



WARNING!

Danger in case of misuse!

The folding machine may only be operated in technically perfect condition. Any faults must be rectified immediately. Unauthorised modifications to the folding machine or improper use of the folding machine and the disregard for the safety or the user's guide exclude the manufacturer's liability for any resulting damage to persons or property and cause loss of warranty!

Please observe the following points:

- Use the protective devices and securely fix them. Never work without protective devices and make sure that they are working properly.
- Always keep the machine and its working environment proper. Provide for sufficient illumination.
- The design of the folding machine must not be modified and it must not be used for any other purposes than the processes intended by the manufacturer.
- Never work under the influence of diseases resulting in concentration disorders, over fatigue, drugs, alcohol or medications.
- Keep children and persons who are not familiar with the machine away from your working environment.
- Immediately remove any disturbances which influence the safety.
- Protect the machine against humidity.
- Before each use of the machine, make sure that no parts are damaged. Immediately replace damaged parts in order to avoid sources of danger.
- Do not overload the machine! It is working better and safer in the specified range. Use proper tools! Make sure that the tools are not damaged.
- Only use original spare parts and accessories in order to avoid possible dangers and risks of accidents.

2.5 Safety signs on the machine

At the Folding Machine safety signs are attached, which must be observed and followed.



Fig. 1: 1 Mandatory Signs | 2 Prohibition Sign | 3 Warning Sign

The safety markings which are applied on the machine must not be removed. Damaged or missing safety markings may lead to errors, personal and material damages. Immediately replace them. The machine must be put out of operation from the moment when the signs are unable to be recognized and understood at first glance, until new signs are attached.

2.6 Intended use

The Folding Machine is exclusively intended for bending of sheets of stainless steel and non-ferrous metals. The material to be operated must not exceed the max. thickness given in the technical data. The machine must only be operated by a single person, who is trained on the machine and who is familiar with operating and maintenance of the Folding Machine.

The proper use also includes observing all indications in these operating instructions. Any use beyond the proper use or any other use is regarded as misuse. The company Stürmer Maschinen GmbH is not liable for any design and technical modifications on the appliance. Any claims due to damages because of not intended use are excluded.



WARNING!

Danger in case of misuse!

A misuse of the appliance can result in dangerous situation.

- Only operate the machine in the range given in the technical specifications.
- Never bypass or override the safety devices.
- Only operate the machine in a technically flawless status.

Misuse

The folding machine must not be used for bending of other materials as described for the intended use.

Residual risks

Even if all safety regulations are observed and if the machine is operated properly, there are residual risks which are listed as follows:

- Risk of injury on the upper limbs (e. g. hands, fingers).
- Hazards by objects falling or flying around.

3 Technical Data

3.1 Type plate



Fig. 2: Type plate of FSBM 1020-20 HSG

3.2 Table

Technical Data	FSBM 1020-20 S2	FSBM 1270-20 HS2	FSBM 1020-20 HSG**
Max. bending length	1020 mm	1270 mm	1020 mm
Max. bending thickness S235*	2,0 mm	2,0 mm	2,0 mm
Max. bending thickness VA-steel	1,2 mm	1,2 mm	1,2 mm
Max. Bending angle	135°	135°	150°
Weight	325 kg	370 kg	360 kg
Dimensions LxWxH	1350 x 800 x 1130 mm	1600 x 800 x 1130 mm	1280 x 620 x 1200 mm

*Performance specifications based on material with tensile strength of 400N/mm²; Bending capacity VA: factor of 0,75;
Bending performance aluminum: factor of 1,2; Hardened segments are required for bending VA

**Segments have a hardness of HRC24-26

Technical Data	FSBM 1020-25 E	FSMBM 1270-20 E	FSMBM 1520-15 E	FSMBM 2020-12 E
Max. bending length	1020 mm	1270 mm	1520 mm	2020 mm
Max. bending thickness S235*	2,5 mm	2,0 mm	1,5 mm	1,2 mm
Max. bending thickness VA-steel	1,5 mm	1,2 mm	0,9 mm	0,7 mm
Max. Bending angle	135°	135°	135°	135°
Weight	290 kg	340 kg	415 kg	540 kg
Dimensions LxWxH [mm]	1350 x 800 x 1130	1600 x 800 x 1130	1850 x 770 x 1130	2290 x 820 x 1180

4 Transport, Packaging, Storage

4.1 Delivery and Transport

Delivery

Check if there are any visible transportation damages after delivery of the machine. If the machine shows any damages, immediately inform the carrier or the distributor.

Transport

Improper transport is accident-prone and can cause damage or malfunctions for which we do not grant any liability or guarantee.

Transport the scope of delivery secured against shifting or tilting with a sufficiently dimensioned industrial truck to the installation site.



WARNING!

Severe or fatal injuries may occur if parts of the machine tumble or fall down from the forklift truck, pallet truck or from the transport vehicle. Follow the instructions and information on the transport box.

Note the total weight of the machine. The weight of the machine is indicated in the "Technical data" of the machine. When the machine is unpacked, the weight of the machine can also be read on the rating plate. Only use transport devices and load suspension gear that can hold the total weight of the machine.



WARNING!

The use of unstable lifting and load suspension equipment that might break under load can cause severe injuries or even death. Check that the lifting and load suspension gear has sufficient load-bearing capacity and that it is in perfect condition.

Observe the accident prevention regulations issued by your Employers Liability Insurance Association or other competent supervisory authority, responsible for your company.

Fasten the loads properly.

General risks during internal transport



WARNING: DANGER OF TIPPING

The device may be lifted unsecured by a maximum of 2cm.

Employees must be outside the danger zone, the reach of loads.

Warn employees and, if necessary, advise employees of the hazard.

Devices may only be transported by authorized and qualified persons. Act responsibly during transport and always consider the consequences. Refrain from daring and risky actions.

Gradients and descents (e.g. driveways, ramps and the like) are particularly dangerous. If such passages are unavoidable, special caution is required.

Before starting the transport check the transport route for possible danger points, unevenness and disturbances as well as for sufficient strength and load capacity.

Danger points, unevenness and disturbance points must be inspected before transport. The removal of danger spots, disturbances and unevenness at the time of transport by other employees leads to considerable dangers.

Careful planning of internal transport is therefore essential.

Transport with a forklift/pallet truck:

For delivery the machine is permanently mounted on a pallet so that it can be transported with a forklift or a pallet truck.



ATTENTION!

Take care that the handling and lifting equipment can accommodate the load during transport and with lifting of the Folding Machine.



WARNING!

Danger to life!

Failure to observe the weight of the device as well as the safe working load of the lifting means during transport or lifting operations, can tilt or topple the unit.

- During transportation and lifting work note the weight of the machine and also the safe working load of the lifting device.
- Check lifting and handling slings are in good condition.



NOTE!

- The machine must only be handled by experienced personnel for loading, unloading and transport.
- Never place the forks of the forklift directly under the machine for lifting!

Transport with a crane:

The machine can be placed by a crane at a suitable location. For this, the machine must be secured in accordance with regulations on the crane. There are the special bolts for transport [Fig. 3; 1] to be used on the machine. The bolts for transport are to be tightened before the beginning of the transport.

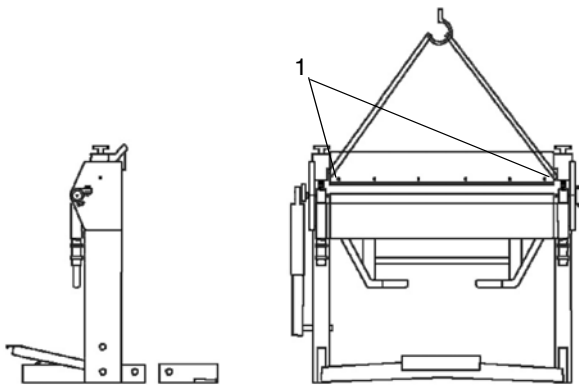


Fig. 3: Transport with a crane



NOTE!

- To transport all the covers must be mounted on the machine frame.
- The machine must not be rocked during transport by crane.

In order to achieve optimal results, the frame should be mounted stably by a sufficient fixation on the ground (see Figure 4).

To protect against moisture and dirt all shining parts of metal are greased. This protective layer has to be removed prior to commissioning.

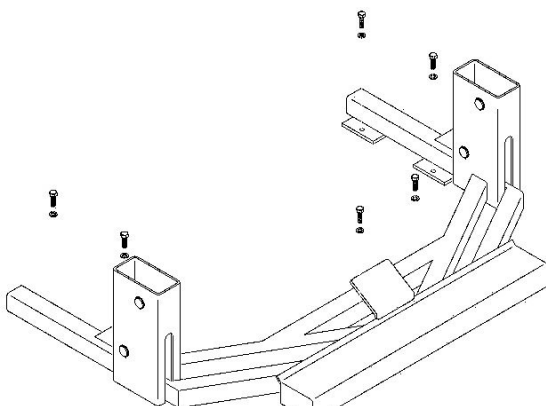


Fig. 4: Fixation to the ground

4.2 Packaging

All used packaging materials and packaging aids of the appliance are recyclable and generally need to be transported to the material recycling.

Crush the packaging material made of cardboard and supply it to the waste paper collection.

The films are made of polyethylene (PE) and the upholstery parts are made of polystyrene (PS). These materials have to be delivered to a recycling station of the responsible dumping company.

4.3 Storage

The machine must be stored thoroughly cleaned in a dry, clean and frost-free environment. It must not be placed in the same room together with chemicals.

5 Description of the machine

The illustrations in these operating instructions serve the general comprehension and may deviate from the actual type.

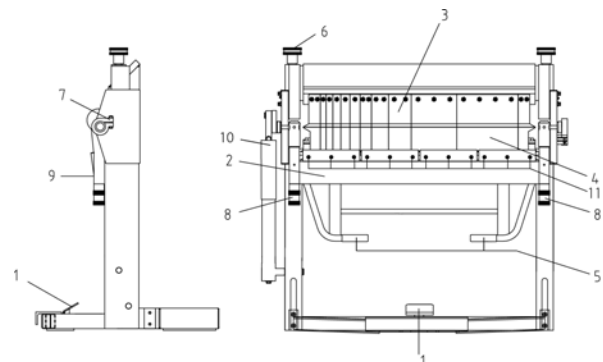


Fig. 5: Machine parts

- 1 Pedal for clamping
- 2 Bending beam
- 3 Segments of clamping beam
- 4 Segments of bending beam
- 5 Handle
- 6 Adjustment of high position and pressing power of clamping beam
- 7 End stop of bending angle
- 8 Adjustment of material thickness
- 9 Fixation of adjusted material thickness
- 10 Auxiliary Cylinder
- 11 Fixation screws of bending beam

5.1 Scope of delivery

Scope of delivery:

- Operating Instructions
- Rod for exchange of segments (FSBM 1020-20 HSG)



Fig. 6: Rod for release of segments. For FSBM 1020-20 HSG only!

5.2 Accessory for option

Back gauge (until 300 mm) for following models:

- FSBM 1020-20S2
- FSBM 1020-25E
- FSBM 1270-20E
- FSBM 1270-20HS2



Fig. 7: Back gauge

6 Installation and Operation

6.1 Installation



ATTENTION!

Check the floor loading capacity before you install the machine. The place of installation must be capable of bearing the weight of the machine and the workpieces.



Use protective gloves!



Use protective boots!



Wear protective clothes!



WARNING!

Risk of crushing!

The machine may tip when setting up and cause serious injury.

- The machine should be established by at least 2 persons.

To achieve a good functioning of the folding machine and a long service life, the location should meet the following criteria:

- The ground must be level, stable and free of vibrations
- The working area must be dry and well ventilated
- Machines causing dust and chips should not be operated in the vicinity of the folding machine.
- There must be enough space for the operating personnel, for the transport of material as well as for adjusting and maintenance.
- The working area must have good lighting.



NOTE!

- The bending machine is pre-assembled when delivered.

Step 1: Check the ground for horizontal orientation, stability and evenness.

Step 2: Take all parts out of the packaging.

Step 3: If necessary protruding parts, such as e.g. end stops, handles, etc., must be made safe by additional safety constructions, so that persons are not at risk.



NOTE!

After installation remove the grease from the blank metal parts which has been applied for protection.

- Use normal solvents for this.
- Do not use water, nitro solvents, or similar!



NOTE!

The moving parts must be free of dirt and dust.

- Lubricate moving parts, where appropriate, as indicated in Section Cleaning and Maintenance.

6.2 Mounting of the back gauge (optional)

Step 1: Screw the two guide rails (Pos. 2, Fig. 8) to the back of the machine (Fig. 11) using the four long screws (Pos. 6, Fig. 8). Use the four long screws (Pos. 6, Fig. 8).

Step 2: Fasten the two scales in the guide rails so that they are suitable for the intended purpose.

Step 3: Insert the clamping handle (Pos. 4, Fig. 8 and Fig. 9) into the hole on the short bracket of the stop angle (Pos. 1, Fig. 8 and Fig. 9).

Step 4: Slide the T-slot nut (Pos. 4, Fig. 8 and Fig. 9) into the guide rail (Pos. 2, Fig. 8) and fasten the stop angle (Pos. 1, Fig. 8) to the left guide rail (Pos. 2, Fig. 8) using the clamping handle (Pos. 4, Fig. 8). Do not tighten the clamping lever completely so that the stop angle can still be aligned.

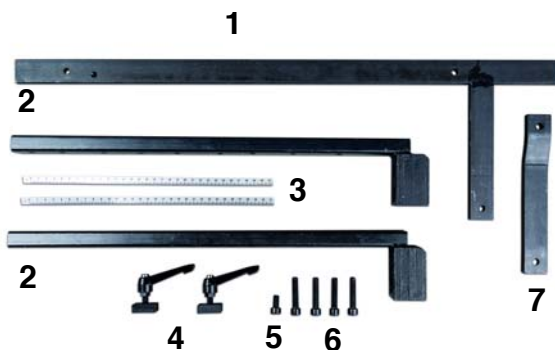


Fig. 8: Components of the back gauge

Legend:

- | | |
|-----------------------|-----------------------------|
| 1 Stop angle | 2 Guide rail (2x) |
| 3 Distance scale (2x) | 4 Handle with slot nut (2x) |
| 5 Screws small (1x) | 6 Screws long (4x) |
| 7 Bended connector | |

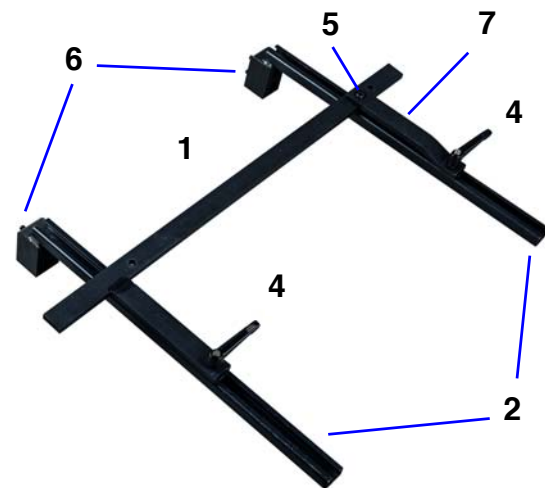


Fig. 9: Back gauge assembled

Step 5: Insert the second clamping handle Pos. 4, Fig. 8 and Fig. 9) into the hole in the curved area of the connector (Pos. 7, Fig. 10).

Step 6: Then attach the bended connecting piece (Pos. 7, Fig. 8) to the right guide rail using the second clamping handle and the second T-slot nut (Fig. 10). Do not completely tighten the clamping lever so that the connector can still be aligned.



Fig. 10: Mounting of the bended connector

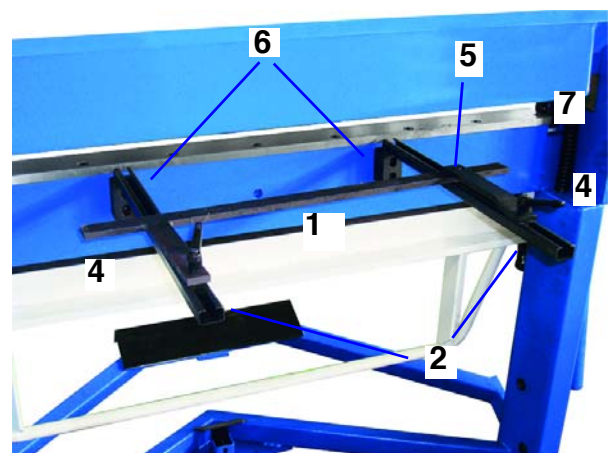


Fig. 11: Back gauge mounted on the machine

Step 7: Fasten the bended connector (Pos. 7, Fig. 9) with the small screw (Pos. 5, Fig. 9) in the threaded hole in the junction of the angle bracket (Fig.10).

Step 8: Set the long boom of the angle stop parallel to the bending edge.

Step 9: Tighten the small screw and the clamping levers.

7 Operation



Use protective gloves!



Use protective boots!



Wear protective clothes!



WARNING!

Danger in case of insufficient qualification of the staff!

Insufficiently qualified persons cannot estimate the risks while using the machine and expose yourself and others to the danger of severe injuries.

- Have all works only performed by qualified persons.
- Keep insufficiently qualified persons out of the working area.



WARNING!

There is danger for the operator and for other persons if they do not comply with the following rules.

- The operator must not work if he is under the influence of alcohol, drugs or medication.
- The operator must not work if he is overworked or suffers from fatigue and difficulties in concentrating.
- Operators must be familiar with the structure and function of this machine.
- The folding machine may only be operated by one skilled person. Other persons must not enter the working area during operation.



WARNING!

Risk of crushing!

In case of improper works on the folding machine there is a risk of injury on the upper limbs.

Keep your hands away from the clamping beam and the bending beam



NOTE!

Before start up, note the following:

- The safety devices as well as the protective covers must be functional.

In order to operate steady and safe, please make sure that the machine is grounded firmly, well fixed to the ground and levelled horizontally.

The numbered machine parts of the following description can be found in Figure 5 "Machine parts"

Step 1: Before working with the machine, the bending angle end stop (7) has to be released. Subsequently, the desired clamping pressure must be set by the regulating screws (6). These must be screwed in as far that the foot pedal (1) still engages upon pressing.

Step 2: By screwing the adjustment screws (M8) the bending gap of the machine is set for the sheet to be processed. Tip: To achieve an optimal result, the bending gap should be uniform and slightly wider than the plate thickness.

Step 3: Now the locking device (1) for the upper beam may be released and the upper beam may be lifted by pressing of the pedal, and the sheet can be inserted. By subsequent pressure on the foot pedal (1) the upper beam lowers and the plate is clamped safely.

Take care of crushing hazards for the upper limbs!

Step 4: By raising the lower beam, you now can bend your plate to the desired angle. The auxiliary cylinder (10) helps the force to be applied. In order to maintain the angle adjustment for multiple bending operations, adjust the folding angle stop (7) in the desired position. It can be rotated to the desired angle individually or together with the bending beam, and can be clamped there.

Using the removable segments, it is possible to prepare box-shaped and complex profiles, for example.



NOTE!

When working with the FSBM 1020-20 HS2 make sure that bending segments of the same size are mounted opposite.

8 Care, maintenance and repair



Tips and recommendations

In order that the machine is always in good operating status, it is necessary to regularly perform care and maintenance works.



NOTE!

Before Care and maintenance of the folding machine, the maintenance instructions must be read carefully. Dealing with the bending machine is only permitted for persons who are familiar with the folding machine.



WARNING!

Danger in case of insufficient qualification of the staff!

Insufficiently qualified persons cannot estimate the risks while performing repair work at the appliance and expose themselves and others to the danger of severe injuries.

- Have all maintenance works only performed by qualified persons.

After maintenance, repair and cleaning works, check if all claddings and protective equipment are properly reassembled to the machine and that there are no more tools inside or in the working area of the appliance.

8.1 Care by cleaning



Use protective gloves!

Wear suitable protective gloves when cleaning the machine in order to protect yourself against injuries caused by chips.

Clean the machine in regular intervals using a soft and moistened cloth.



ATTENTION!

Never use solvents or cleaning solutions to clean plastic parts or lacquered surfaces. The surface may be dissolved and consequential damage may occur. Use water containing mild cleaning detergents.

Treat blank metallic working surfaces with anti-rust spray.

8.2 Maintenance and repair

Lubricate all moving parts and bearings once per month.

Maintenance and repair works must only be performed by specialists. If the machine does not work properly, please contact a specialised dealer or our customer service. Please find the contact data on chapter 1.2 Customer service.

8.3 Troubleshooting



ATTENTION!

If one of the following errors may occur, discontinue working with the machine. It could result in serious injury. All repairs and replacement work must be carried out by qualified and trained personnel.

Fault	Possible cause	Remedy
The machine does not work.	1. Faulty mechanics.	1. Check mechanics. 2. Contact the dealer or Service.
The machine does not bend the material correctly.	1. The sheet thickness might be wrong. 2. Wrong material is used.	1. Take care of max. sheet thickness. 2. Only use correct material
The machine does not bend the material as described in the catalog.	1. The sheet thickness might be wrong. 2. Faulty mechanics.	1. Check the sheet thickness. 2. Contact the dealer or Service.

9 Disposal, recycling of used devices

For environmental benefits it is necessary to ensure that all components of the machine are only disposed of by the provided and allowed means.

9.1 Decommissioning

Immediately decommission used machines in order to avoid later misuse and endangering of the environment or of persons.

- Dispose of all environmentally hazardous operating materials of the used device.
- If required, disassemble the machine into easy-to-handle and usable components and parts.
- Supply the machine components and operating materials to the provided disposal routes.

9.2 Disposal of lubricants

The manufacturer of the lubricant makes the disposal instructions for the used lubricants available. If applicable, ask for the product-specific data sheets.

10 Spare parts



DANGER!

Danger of injury by the use of wrong spare parts!

Dangers may result for the user and damages as well as malfunctions may be caused by using wrong or damaged spare parts.

- Only use original spare parts of the manufacturer or spare parts admitted by the manufacturer.
- Always contact the manufacturer in case of uncertainties.



NOTE!

The manufacturer's warranty will become null and void if non admitted spare parts are being used.

10.1 Order of spare parts

The spare parts may be purchased with the authorised dealer or directly with the manufacturer. Please find the corresponding contact data in Chapter 1.2 Customer service.

Indicate the following basic information for spare part orders:

- Type of device
- Article number
- Part number
- Quantity
- Year of manufacturing
- Required mode of dispatch (mail, freight, sea, air, express)
- Address of dispatch

Spare part orders which do not include the above indications may not be taken into consideration. If the indications regarding the mode of dispatch are missing, the product is dispatched at the discretion of the supplier.

You will find indications regarding the device type, article number and year of manufacturing on the type plate which is fixed on the machine.

Example

The bending arm for the Folding Machine FSBM 1020-20 HSG must be ordered. The bending arm has the number 42 in the spare parts drawing 1.

By ordering spare parts, send a copy of the spare parts drawing (1) with the marked part (bending arm) and marked position number (42) to the dealer or spare parts department and provide the following information:

- Type of machine: **Folding Machine FSBM 1020-20 HSG**
- Article number: **3770103**
- Drawing number: **1**
- Position number: **42**

Item number of your device:

Type of machine	Article Number
FSBM 1020-25 E	3772125
FSBM 1270-20 E	3772127
FSBM 1520-15 E	3772129
FSBM 2020-12 E	3772130
FSBM 1020-20 S2	3772102
FSBM 1270-20 HS2	3772128
FSBM 1020-20 HSG	3770103

10.2 Spare parts drawings

In case of service, the following drawings shall help to identify the necessary spare parts. Send a copy of parts drawing with the marked components to your authorised dealer when ordering spare parts.

Spare parts drawing FSBM 1020-20 S2_1270-20 HS2

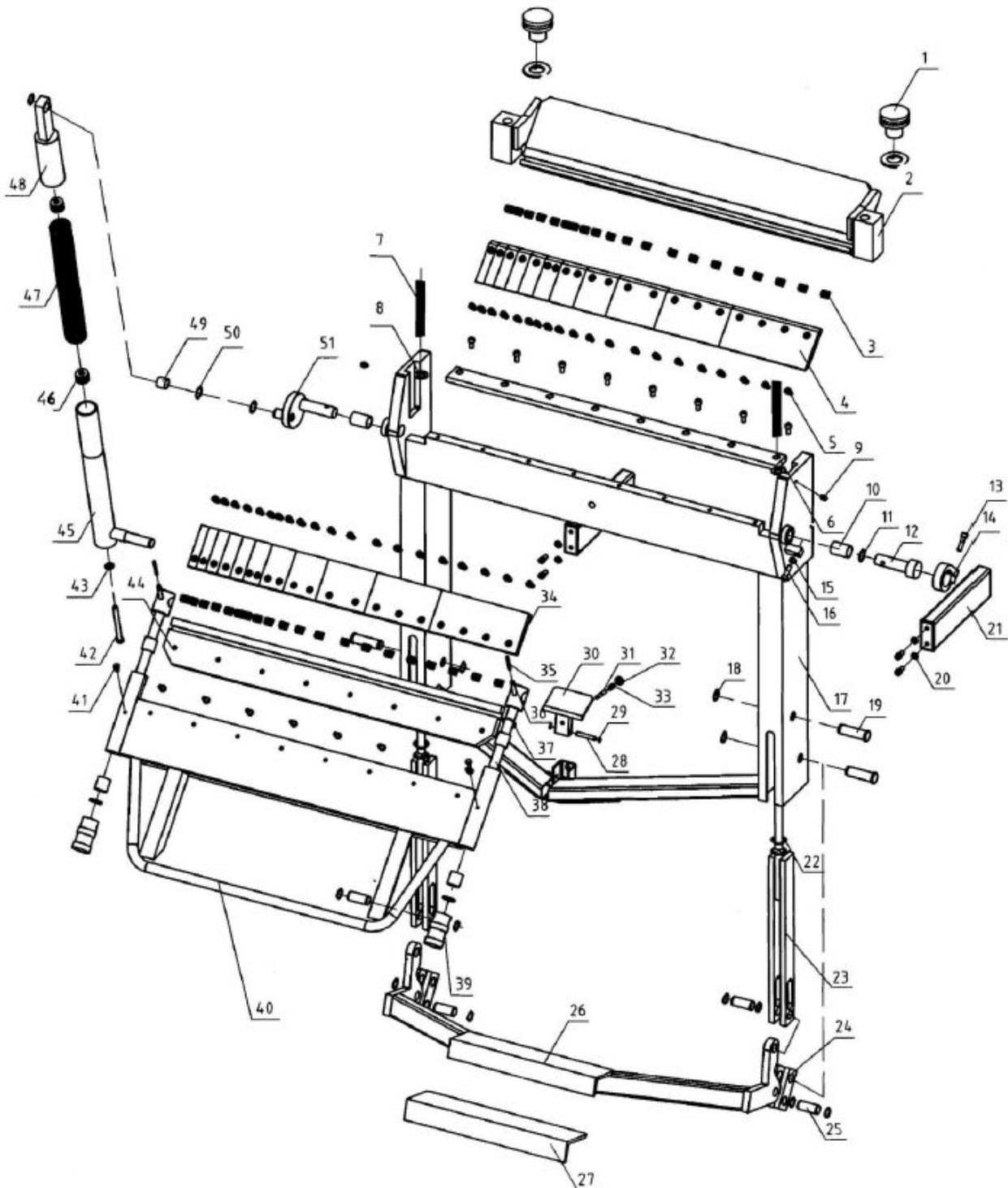


Fig. 12: Spare parts FSBM 1020-20 S2 and 1270-20 HS2

Spare parts drawing FSBM 1020-20 HSG

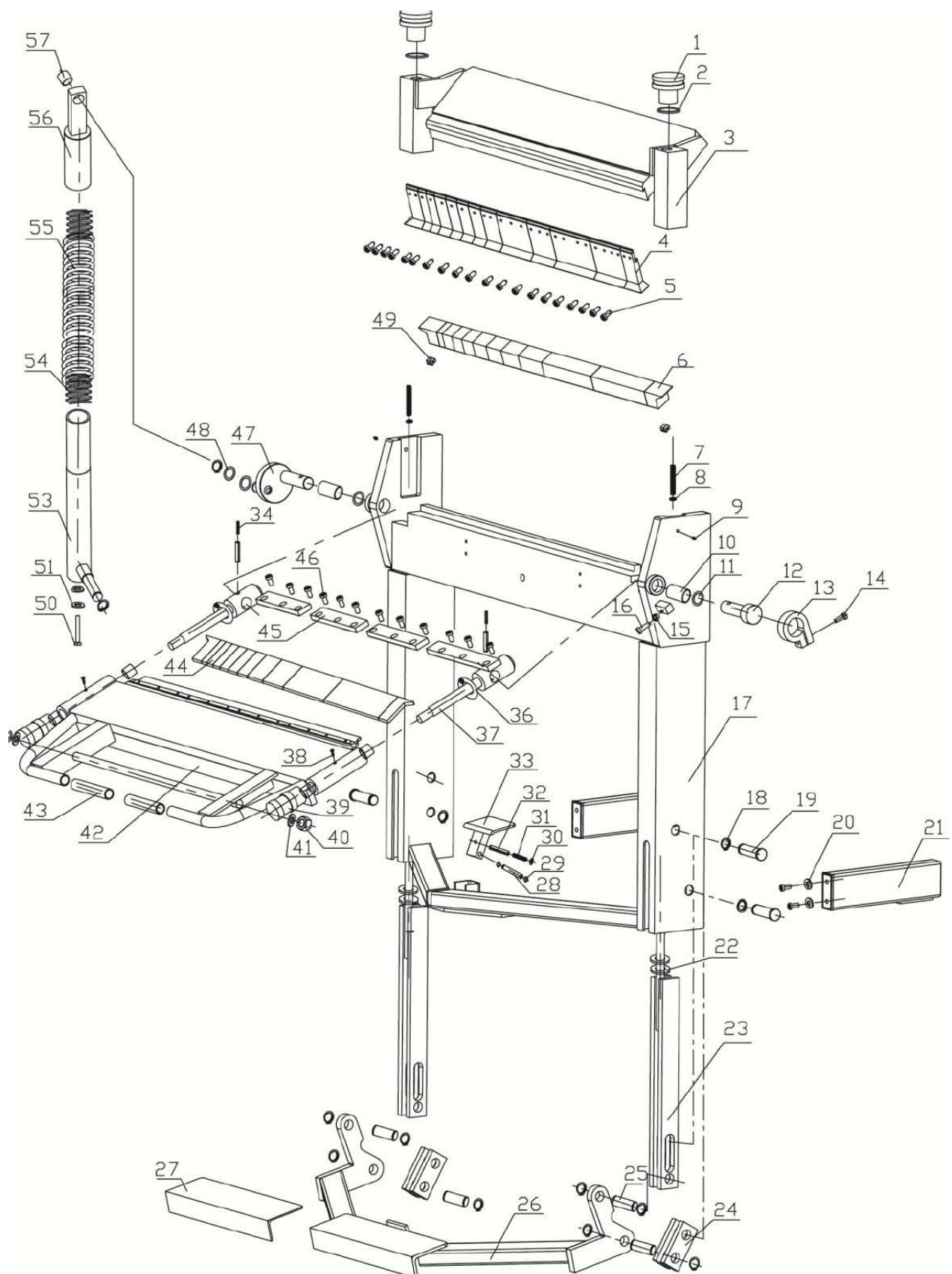


Fig. 13: Spare parts FSBM 1020-20 HSG

Spare parts drawing FSBM 1020-25 E_1270-20 E_1520-15 E

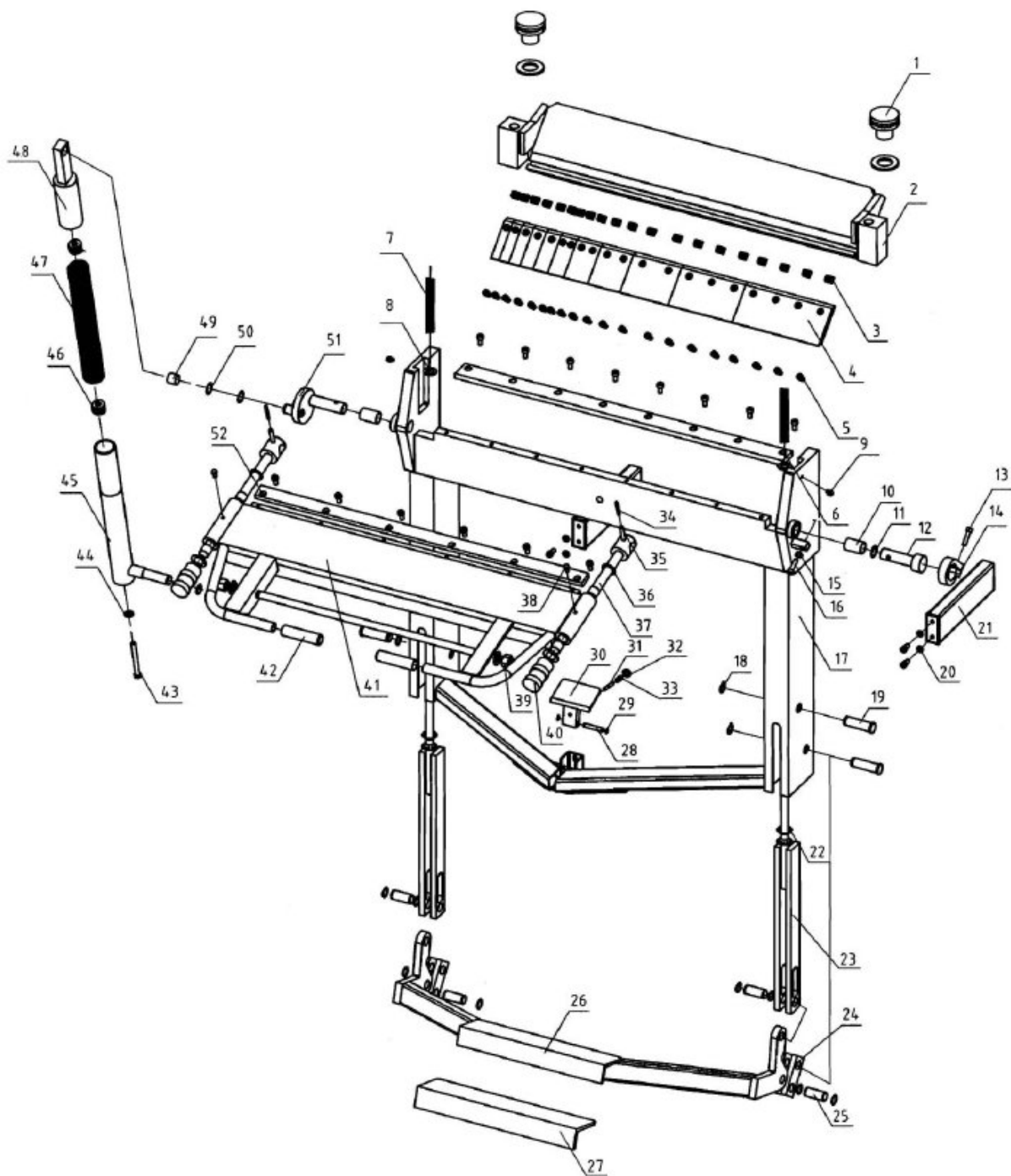


Fig. 14: Spare parts FSBM 1020-25 E_1270-20 E_1520-15 E

Spare parts drawing FSBM 2020-12 E

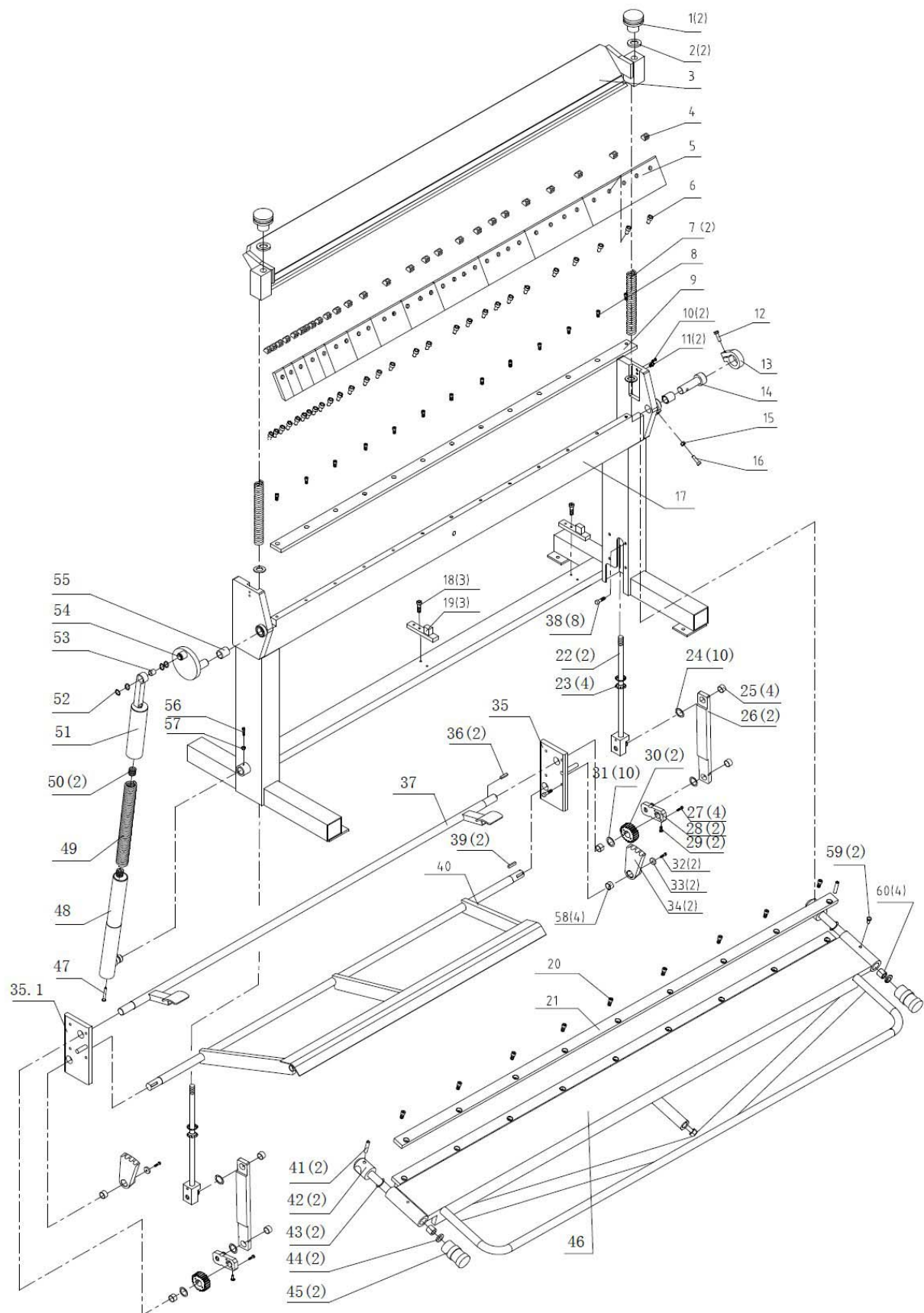


Fig. 15: Spare parts FSBM 2020-12 E

11 EC Declaration of Conformity

According to Machinery Directive 2006/42/EC Annex II 1.A

Manufacturer / distributor: Stürmer Maschinen GmbH
Dr.-Robert-Pfleger-Straße 26
D-96103 Hallstadt

hereby declares, that the following product

Product Group: Metallkraft® Metal working machines

Machine type: Folding machine

Designation of the machine *:	<input type="checkbox"/> FSBM 1020-25 E	Item number *:	<input type="checkbox"/> 3772125
	<input type="checkbox"/> FSBM 1270-20 E		<input type="checkbox"/> 3772127
	<input type="checkbox"/> FSBM 1520-15 E		<input type="checkbox"/> 3772129
	<input type="checkbox"/> FSBM 2020-12 E		<input type="checkbox"/> 3772130
	<input type="checkbox"/> FSBM 1020-20 S2		<input type="checkbox"/> 3772102
	<input type="checkbox"/> FSBM 1270-20 HS2		<input type="checkbox"/> 3772128
	<input type="checkbox"/> FSBM 1020-20 HSG		<input type="checkbox"/> 3770103

Serial number*: _____

Year of manufacture*: 20____

* please fill in according to the information on the type plate

Due to its design and construction, as well as in the version we have placed on the market, it complies with the relevant basic health and safety requirements of the Machinery Directive 2006/42 / EC Annex II 1.A.

The following harmonized standards have been applied:

DIN EN ISO 12100:2011-03	Safety of machinery. General principles for design - Risk assessment and risk reduction (ISO 12100:2010)
--------------------------	---

Responsible for documentation: Kilian Stürmer, Stürmer Maschinen GmbH,
Dr.-Robert-Pfleger-Str. 26, D-96103 Hallstadt

Hallstadt, 28.09.2020



Kilian Stürmer
CEO, Director



12 Notes

