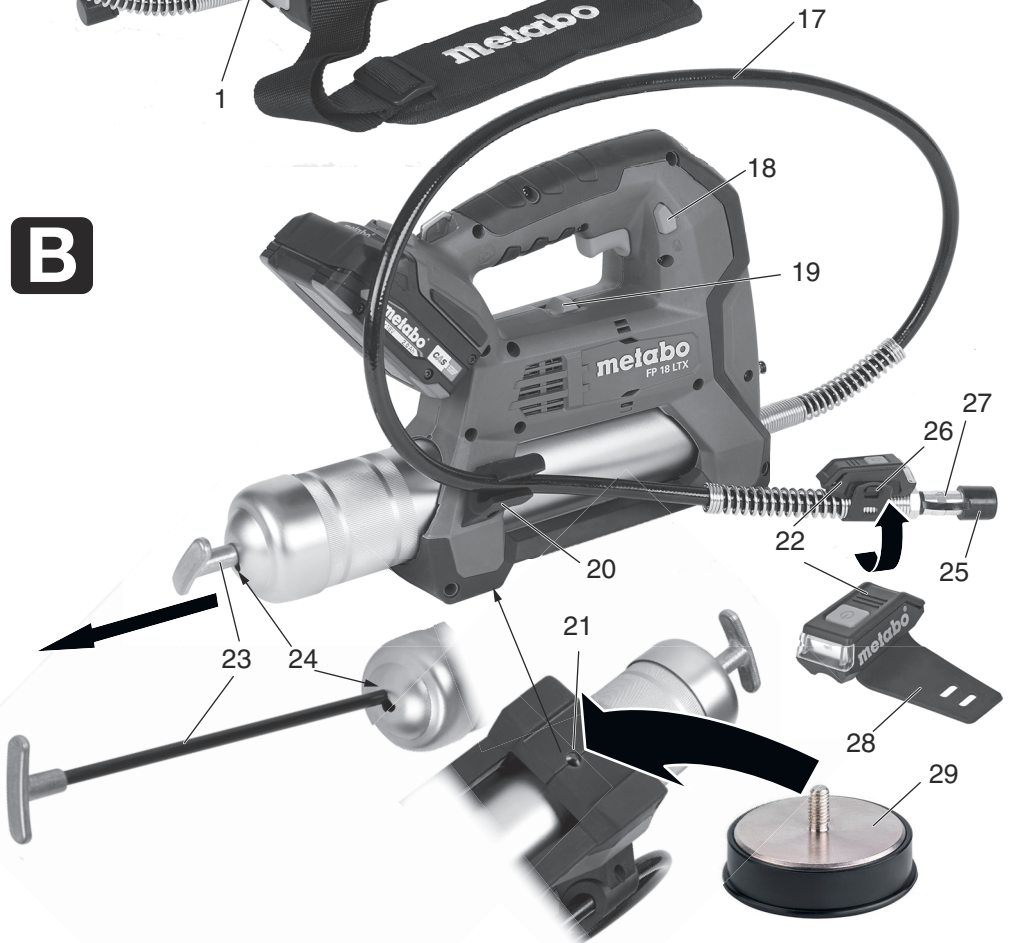


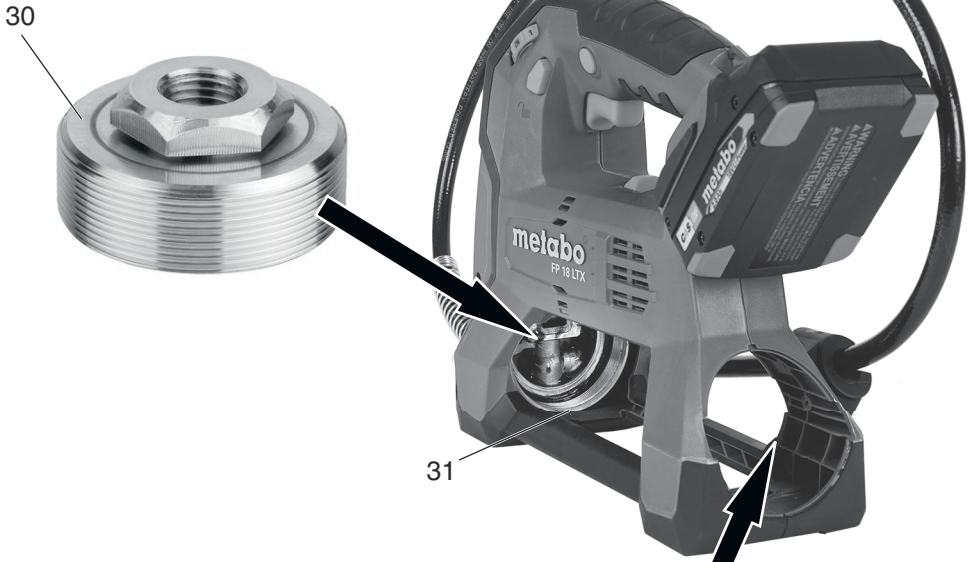
FP 18 LTX



de	Originalbetriebsanleitung	5	fi	Alkuperäiset ohjeet	44
en	Original instructions	10	no	Original bruksanvisning	49
fr	Notice originale	15	da	Original brugsanvisning	53
nl	Oorspronkelijke gebruiksaanwijzing	20	pl	Instrukcja oryginalna	58
it	Istruzioni originali	25	el	Πρωτότυπο οδηγιών χρήσης	63
es	Manual original	30	hu	Eredeti használati utasítás	68
pt	Manual de instruções original	35	ru	Оригинальное руководство по эксплуатации	73
sv	Bruksanvisning i original	40	uk	Оригінальна інструкція з експлуатації	79

A**B**

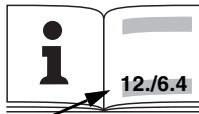
C



D



		FP 18 LTX TV 00	FP 18 LTX TV 19/ AUSTRALIA
*1) Serial Number		00789850	00789190
U	V	18	18
M	mm (in)	400 x 110x 230 (15 ^{3/4} x 7 ^{5/16} x 9 ^{1/16})	400 x 110x 230 (15 ^{3/4} x 7 ^{5/16} x 9 ^{1/16})
m	kg (lbs)	4,4 (9.7)	4,4 (9.7)
C_c	g (lbs)	400 (0.9)	450 (1.0)
L_{pA}/K_{pA}	dB(A)	75 / 3	75 / 3
L_{WA}/K_{WA}	dB(A)	86 / 3	86 / 3
a_h / K_h	m/s²	1,4 / 1,5	1,4 / 1,5



*5)

P		1	2	3	5	8	10	15	20	25
A_{G1}	g (lbs)	0,5 (0.001)	1,0 (0.002)	3,5 (0.008)	4,0 (0.009)	6,0 (0.013)	7,0 (0.015)	12,0 (0.026)	15,0 (0.033)	18,5 (0.041)
A_{G2}	g (lbs)	0,5 (0.002)	1,0 (0.004)	3,5 (0.008)	4,0 (0.009)	4,0 (0.009)	4,0 (0.009)	6,5 (0.014)	9,0 (0.020)	11,0 (0.024)



*2) 2014/30/EU,2006/42/EC, 2011/65/EU

*3) EN 62841-1:2015,EN ISO 12100:2010,EN IEC 63000:2018

2022-01-23, Bernd Fleischmann
 Direktor Produktentstehung & Qualität (Vice President Product Engineering & Quality)
 *4) Metabowerke GmbH - Metabo-Allee 1 - 72622 Nuertingen, Germany

ppa. B.F.

Original instructions

1. Declaration of Conformity

Under our sole responsibility, we hereby declare that these compressed air grease guns, identified by type and serial number *1), meet all relevant requirements of directives *2) and standards *3). Technical documents for *4) - see Page 3.

For UK only:

UK We as manufacturer and authorized person to
CA compile the technical file, see *4) on page 4, hereby declare under sole responsibility that this metal weld bead remove, identified by type and serial number *1) on page 4 of the Original Instructions, fulfil all relevant provisions of following UK Regulations *2) S.I. 2016/1091, S.I. 2008/1597, S.I. 2012/3032 and Designated Standards *3) on page 3.

2. Specified Conditions of Use

The grease gun is suited for greasing lubrication points on metal and similar materials that are usually lubricated with grease guns. Commercially available grease in cartridges or containers suitable for use in grease guns must be used.

This appliance may only be used as intended.

Any other use does not comply with the intended purpose.

The user bears sole responsibility for any damage caused by inappropriate use.

Generally accepted accident prevention regulations and the enclosed safety information must be observed.

3. General Safety Information



For your own protection and for the protection of your power tool, pay attention to all parts of the text that are marked with this symbol!



WARNING – Read the operating instructions to reduce the risk of injury.



WARNING – Read all safety warnings, instructions, illustrations and specifications provided with this power tool. Failure to follow all instructions listed below may result in electric shock, fire and/or serious injury.

Save all warnings and instructions for future reference.

Always include these documents when passing on your power tool.

4. Special safety instructions

4.1 Safety instructions for cordless grease gun

- The tool must be held with a firm grip.

- Do not operate the tool near flames. The grease could be flammable.
- Observe the requirements of the operating instructions for the lubricants.
- Do not carry the tool by the flexible hose or the bar handle.
- Check the flexible hose for damage before each use. Do not use a damaged or kinked hose.
- Before each use, check the flexible hose for permeability.



The hose must not be clogged!

- Check that all elements attached to the unit are firmly in place.
- Check the safety devices before operation as described in the instructions.
- Read and follow the grease manufacturer's instructions before use.
- Keep hands and clothing away from the bar of the bar handle (15).



Danger of crushing – wear work gloves!

- Wipe off any grease adhering to the tool to prevent it from slipping and thus causing injuries.
- Do not forcefully bend or compress the flexible hose. This can cause the hose to break or become deformed.
- Use only a hose specified by Metabo.
- The environment in which the power tool is used must be well-lit, adequately ventilated and dry.
- When using the grease gun, make sure you maintain a healthy posture.

Vibration emission during actual use of the power tool may differ from the indicated emission values depending on the way the tool is used, and specifically depending on the type of workpiece being processed.



WARNING – Safety measures must be established to protect the user on the basis of an estimate of the degree of danger under the actual conditions of use.



Wear safety goggles.



Wear a suitable protective mask.



CAUTION Do not stare at operating light.

4.2 Safety instructions for battery packs

Remove battery pack from machine, before any adjustment or maintenance is carried out.

Make sure that the tool is switched off before fitting the battery pack.



Protect battery packs from water and moisture!



Do not expose battery packs to fire!

Do not use faulty or deformed battery packs!
 Do not open battery packs!
 Do not touch or short circuit battery pack contacts!



A slightly acidic, flammable fluid may leak from defective Li-Ion battery packs!



If battery fluid leaks out and comes into contact with your skin, rinse immediately with plenty of water. If battery fluid leaks out and comes into contact with your eyes, wash them with clean water and seek medical attention immediately!

If the machine is defective, remove the battery pack from the machine.



The instructions in the operating instructions of the battery pack must be followed.

5. Overview

See page 2.

- 1 Filling nozzle/connection for grease hose
- 2 Venting valve
- 3 LED light
- 4 Switch for the LED light
- 5 Metal eyelets
- 6 Adjustment wheel
- 7 Trigger
- 8 Lock button for continuous operation
- 9 Handle
- 10 Battery pack release button
- 11 Button for capacity and signal indicator
- 12 Capacity and signal indicator *
- 13 Battery pack
- 14 Grease reservoir
- 15 Bar handle
- 16 Shoulder strap
- 17 Flexible hose
- 18 Switch lock
- 19 Two-speed switch
- 20 Hose holder
- 21 Thread for magnet*
- 22 Additional LED
- 23 Plunger rod
- 24 Plunger rod catch
- 25 Cover cap
- 26 Plastic hook
- 27 Conical grease nipple coupling
- 28 Silicone tab
- 29 Magnet
- 30 Adapter
- 31 Adapter thread
- 32 Cap (only TV 00)
- 33 Cap wings
- 34 Clamping coupling

*equipment-specific

6. Initial Operation



Remove the battery pack from the machine before any adjustment or maintenance is carried out.

Instructions on charging the battery pack can be found in the operating instructions of the Metabo charger.

6.1 Battery pack

Charge the battery pack (13) before use.

Recharge the battery pack if performance diminishes.

Battery packs have a capacity and signal display (13) (depends on design variant):

- Press the button (11), the LEDs indicate the charge level.
- The battery pack is almost empty and must be recharged if one LED is flashing.

Removing:

Press the battery pack release button (10) and pull the battery pack (13) forwards.

Inserting:

Slide in the battery pack (13) until it engages.

6.2 LED lights (3)

Press the switch for LED light (4) to switch on the LED light (3). Press the switch again to switch off the light. The LED switches off automatically after 60 seconds.

6.3 Switching on and off

Before inserting the battery pack into the tool, always make sure that the On/Off switch works properly and returns to the OFF position when released.

The switch lock (18) can be used to lock the trigger switch against unintentional operation. Unlock before switching on.

Switching on: press the trigger switch (7).

Switching off: Let go of the trigger switch (7).

6.4 Adjusting the discharge pressure and rate

WARNING – Do not change the speed mode until the tool has come to a complete stop.

1. Select discharge rate by means of two-speed switch (19):

Speed 1:

Working pressure 690 bar (10000 psi), discharge rate 100 g/min

Speed 2:

Working pressure 413 bar (6000 psi), discharge rate 290 g/min

Select number of strokes by means of adjustment wheel (6):

Select the respective number of strokes (1-25) by selecting the positions 1-25. Position “on” corresponds to the continuous stroke during switch actuation. See table p. 4. *5)

6.5 Continuous operation

Activate continuous operation with the lock button (8).

6.6 Filling the grease reservoir

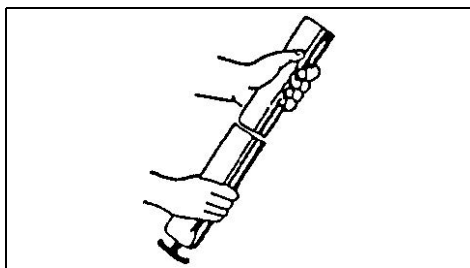
⚠ ATTENTION – Fill the grease reservoir (14) using only non-corrosive lubricants that are approved for use in grease guns. Read the instructions provided by the lubricant manufacturer.

Note:

If using new grease, discharge the old grease until the new grease is visible.

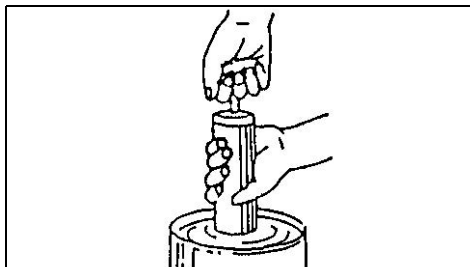
1. Filling the gun with a cartridge

400 g (TV 00) / 450 g (TV 19)



1. Unscrew the grease container (14) anti-clockwise to release and remove it from the device.
 2. Pull out the plunger rod (23) and lock at the plunger rod catch (24) (see p. 2 fig. B).
- ⚠ WARNING** – The bar handle must be firmly engaged to prevent uncontrolled loosening.
3. Remove the plastic caps from the grease cartridge and insert the cartridge into the grease container (14).
 4. Screw the grease reservoir (14) back in place in a clockwise direction.
 5. Loosen the plunger rod (23) and press in.

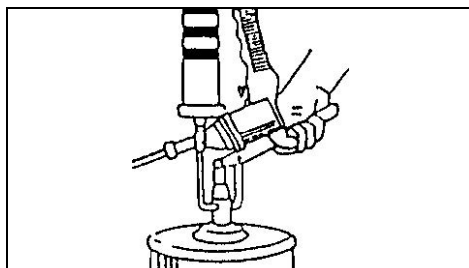
2. Filling the gun from bulk containers



1. Unscrew the grease reservoir (14), turning it anti-clockwise to release.
2. Immerse the grease reservoir (14) approximately 5 cm in the grease and slowly pull back the plunger rod (8) as far as it will go.
3. Secure the plunger rod (23)
4. Screw the grease reservoir (14) back in place in a clockwise direction.
5. Loosen the plunger rod (23) and press in.

Release excess air in the grease reservoir by pressing in the venting valve (2) several times until no more air escapes.

3. Filling the grease gun with a filler pump



1. Withdraw the plunger rod (23) as far as it will go.
2. Connect the filler neck (1) to the filler pump.
3. Switch on the filler pump and fill the grease reservoir (14) completely.
4. Disconnect the filler neck (1) from the filler pump.
5. Loosen the plunger rod (23) and press in.

Release excess air in the grease reservoir by pressing in the venting valve (2) several times until no more air escapes.

4. Filling with screw-in cartridge (only TV 00)

1. Remove the grease container.
2. Cap (32) a.d. Loosen and remove the wings (33).
3. Screw in the thread adapter (30) and tighten it with a suitable tool. (see Section 9.4)
4. Screw the cartridge onto the thread adapter.

7. Care and Maintenance

⚠ Danger! Repair and maintenance work other than described in this section should only be carried out by **qualified specialists**.

- Check that all screw fittings are seated securely, and tighten if necessary.
- Avoid contact with dangerous substances that have collected on the tool. Wear suitable personal protective equipment and take appropriate measures to remove any dangerous substances before maintenance.

8. Accessories

Use only original Metabo or CAS (Cordless Alliance System) battery packs and accessories.

Use only accessories that fulfil the requirements and specifications listed in these operating instructions.

Chargers: ASC 55, ASC 145, etc.

Order no.: 627044000 ASC 55
 Order no.: 627378000 ASC 145
 etc.

Battery packs:

Order no.: 625367000 4.0 Ah (LiHD)
 Order no.: 625368000 5.5 Ah (LiHD)
 Order no.: 625369000 8.0 Ah (LiHD)
 Order no.: 625026000 2.0 Ah (Li-Power)
 Order no.: 625027000 4.0 Ah (Li-Power)
 Order no.: 625028000 5.2 Ah (Li-Power)
 etc.

For a complete range of accessories, see www.metabo.com or the catalogue.

9. Mounting accessories

9.1 Mounting shoulder strap* (16) (p. 2 fig. A)
 Can be attached to the metal eyelets (5) .

9.2 Mounting additional LED (22)
626982000 (p. 2 fig. B)

Place the silicone loop (28) around the hose and hang it on the plastic hook (26) .



WARNING – To reduce the risk of injury, read the operating instructions for the additional LED (22) .



WARNING – Read all safety warnings, instructions, illustrations and specifications provided with the additional LED (22) . Failures to respect the instructions can cause injuries.

9.3 Mounting magnet* (29)
626980000 (p. 2 fig. B)

Screw onto thread (21) for magnet.



WARNING – To reduce the risk of injury, read the supplementary sheet of the magnet (29).



WARNING – Read all safety warnings, instructions, illustrations and specifications that can be found on the magnet (29) . Failures to respect the instructions can cause injuries or damage.

9.4 Mounting adapter* (30) (only for TV 00)
626984000 (p. 3 fig. C)

Permits the use of a 500g screw-in cartridge. Screw the adapter (30) onto the thread (31) and tighten it with a suitable tool.

9.5 Mounting clamping coupling* (34)
626981000 (p. 3 fig. D)

Using a spanner*, remove the conical grease nipple coupling (27) with a suitable tool, screw on the clamping coupling* and tighten it with the tool.

*equipment-specific

10. Repairs



Repairs to electrical tools must only be carried out by qualified electricians!

Contact your local Metabo representative if you have Metabo power tools requiring repairs. For addresses see www.metabo.com.

You can download a list of spare parts from www.metabo.com.

11. Environmental Protection

Observe national regulations on environmentally compatible disposal and on the recycling of disused machines, packaging and accessories.

Packaging materials must be disposed of according to their labelling in accordance with municipal guidelines. Further information can be found at www.metabo.com in the “Service” section.

Battery packs may not be disposed of with regular waste. Return faulty or used battery packs to your Metabo dealer!

Do not allow battery packs to come into contact with water!



Only for EU countries: never dispose of power tools in your household waste! According to European Directive 2012/19/EU on Waste from Electric and Electronic Equipment and implementation in national law, used power tools must be collected separately and recycled in an environmentally-friendly manner.

Discharge the battery pack in the power tool before disposal. Prevent the contacts from short-circuiting (e.g. by protecting them with adhesive tape).

12. Technical specifications

Explanatory notes on the specifications on page 3.

Changes due to technological progress reserved.

M = dimensions: length x width x height

m = weight

C_c = screw-in cartridge capacity

The technical specifications quoted are subject to tolerances (in compliance with relevant valid standards).



Emission values

Using these values, you can estimate the emissions from this tool and compare these with the values emitted by other tools. The actual values may be higher or lower, depending on the particular application and the condition of the tool or accessory. Please allow for breaks and periods when the load is lower for assessment purposes. Arrange protective measures for the user, such as organisational measures based on the adjusted estimates.

Vibration total value (vector sum of three directions) determined in accordance with EN 62841:

L_{pA} = sound pressure level

L_{WA} = acoustic power level

K_{pA}, K_{WA} = measurement uncertainty

a_h = vibration emission value

K_h = uncertainty (vibration)

en ENGLISH

*5)Table: Discharge quantity (A) per stroke per position (P) of the adjustment wheel (6) and speed selection via two-speed switch (19)

A_{G1} = discharge quantity speed 1
 A_{G2} = discharge quantity speed 2
P = position adjustment wheel (6)



Wear ear protectors!