

Originalfassung

DE BETRIEBSANLEITUNG

Übersetzung / Translation

EN USER MANUAL

KANTENSCHLEIFMASCHINE OSZILLIEREND

BELT SANDING MACHINE WITH OSCILLATION



KOS 2260C



2 SICHERHEITSZEICHEN / SAFETY SIGNS

DE	<i>SICHERHEITSZEICHEN</i>	EN	<i>SAFETY SIGNS</i>
	<i>BEDEUTUNG DER SYMBOLE</i>		<i>DEFINITION OF SYMBOLS</i>



DE	CE-KONFORM: Dieses Produkt entspricht den EG-Richtlinien
EN	EC-CONFORM: This product complies with EC-directives



DE	ANLEITUNG LESEN! Lesen Sie die Betriebs- und Wartungsanleitung Ihrer Maschine aufmerksam durch und machen Sie sich mit den Bedienelementen der Maschine gut vertraut um die Maschine ordnungsgemäß zu bedienen und so Schäden an Mensch und Maschine vorzubeugen.
EN	READ THE MANUAL! Read the user and maintenance manual carefully and get familiar with the controls in order to use the machine correctly and to avoid injuries and machine defects.



DE	WARNUNG! Beachten Sie die Sicherheitssymbole! Die Nichtbeachtung der Vorschriften und Hinweise zum Einsatz der Maschine kann zu schweren Personenschäden und tödliche Gefahren mit sich bringen.
EN	ATTENTION! Ignoring the safety signs and warnings applied on the machine as well as ignoring the security and operating instructions can cause serious injuries and even lead to death.



DE	Allgemeiner Hinweis
EN	General note



DE	Schutzausrüstung tragen!
EN	Protective clothing!



DE	Maschine vor Wartung und Pausen ausschalten und Netzstecker ziehen!
EN	Stop and pull out the power plug before any break and engine maintenance!



DE	Nur geschultes Personal!
EN	Only trained staff!



DE	Bedienung mit Schmuck verboten!
EN	Operation with jewelry forbidden!



DE	Bedienung mit Krawatte verboten!
EN	Operation with tie forbidden!



DE	Bedienung mit offenem Haar verboten!
EN	Operation with long hair forbidden!



DE **Gefährliche elektrische Spannung!**
EN **High voltage!**



DE **Warnung vor rotierenden Teilen!**
EN **Warning of rotating parts!**



DE **Warnung vor wegschleudernden Teilen!**
EN **Warning against thrown-off items!**



DE **Vor Nässe schützen!**
EN **Protect from moisture!**



DE **Sicherheitsabstand einhalten!**
EN **Keep safety distance!**

10 PREFACE (EN)

Dear Customer!

This manual contains information and important instructions for the installation and correct use of the BELT SANDING MACHINE WITH OSCILLATION KOS 2260C.

Following the usual commercial name of the device (see cover) is substituted in this manual with the name "machine".

This manual is part of the product and shall not be stored separately from the product. Save it for later reference and if you let other people use the product, add this instruction manual to the product.



Please read and obey the security instructions!

Before first use read this manual carefully. It eases the correct use of the product and prevents misunderstanding and damages of product and the user's health.

Due to constant advancements in product design, construction pictures and content may diverse slightly. However, if you discover any errors, inform us please.

Technical specifications are subject to changes!

Please check the product contents immediately after receipt for any eventual transport damage or missing parts.

Claims from transport damage or missing parts must be placed immediately after initial product receipt and unpacking before putting the product into operation.

Please understand that later claims cannot be accepted anymore.

Copyright

© 2016

This document is protected by international copyright law. Any unauthorized duplication, translation or use of pictures, illustrations or text of this manual will be pursued by law.

Court of jurisdiction is the Landesgericht Linz or the competent court for 4170 Haslach, Austria!

Customer service contact

HOLZMANN MASCHINEN GmbH

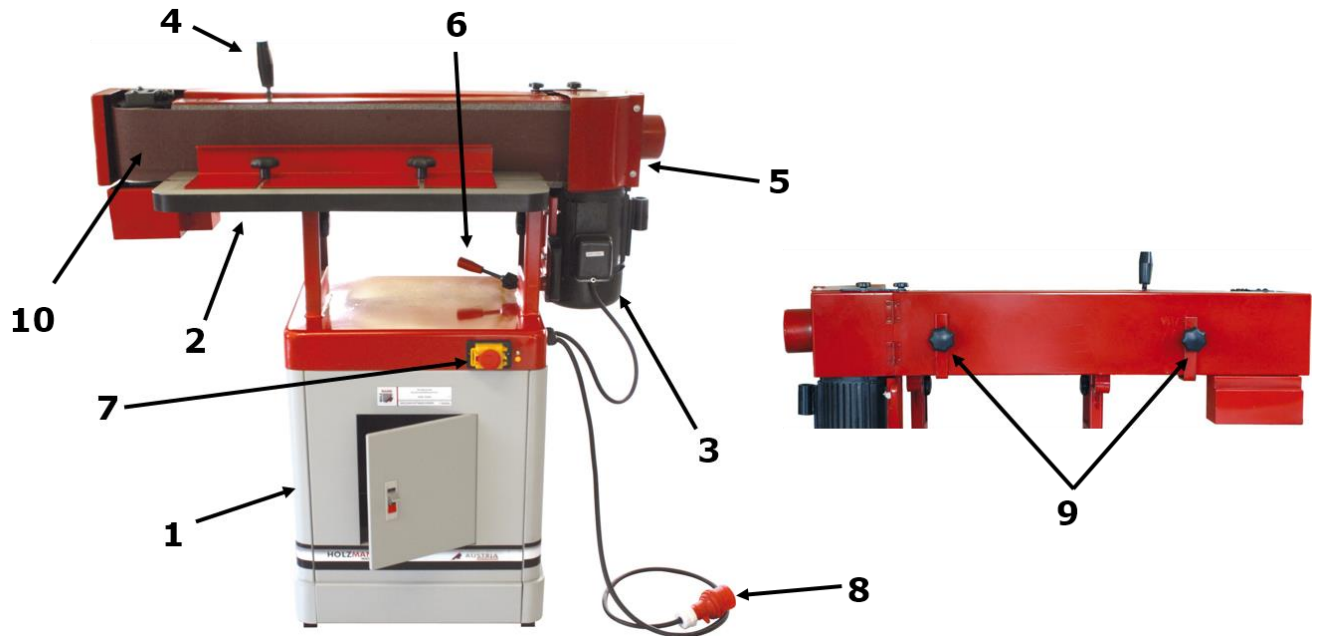
4170 Haslach, Marktplatz 4
AUSTRIA

Tel +43 7289 71562 - 0
Fax +43 7289 71562 - 4

info@holzmann-maschinen.at

11 TECHNIC

11.1 Components



KOS 2260C			
1	Machine stand	6	Tension lever table tilting
2	Sanding unit	7	Switch unit
3	Motor	8	Power supply plug
4	Sanding belt tension lever	9	Fixing screws
5	Dust collector plug	10	Sanding belt

11.2 Technical details

KOS 2260C	
Voltage	230 V / 50 Hz or 400 V / 50 Hz
Motor power S1 / S6	1,1 kW / 1,5 kW
Sanding belt speed	16 m/s
Worktable dimension	755 x 250 mm
Tilting range working table	0° - 90°
Sanding belt dimension	2260 x 150 mm
Dust collector plug	Ø 100 mm
Machine dimension	1295 x 675 x 510 mm
Weight	99 kg
Sound pressure level L _{PA}	86,5 dB (A)

12 SAFETY

12.1 Intended Use

The machine must only be used for its intended purpose! Any other use is deemed to be a case of misuse.

To use the machine properly you must also observe and follow all safety regulations, the assembly instructions, operating and maintenance instructions lay down in this manual.

All people who use and service the machine have to be acquainted with this manual and must be informed about the machine's potential hazards.

It is also imperative to observe the accident prevention regulations in force in your area.

The same applies for the general rules of occupational health and safety.

The machine is used for:

Sanding of wood and other wood-like materials / e.g. fiberboard, chipboard, plywood boards, laminated and non-laminated boards/ over flat or cylindrical sanding units.

Any manipulation of the machine or its parts is a misuse, in this case **HOLZMANN-MASCHINEN and its sales partners cannot be made liable for ANY direct or indirect damage.**



WARNING

- **Use only abrasive allowable for this machine!**
 - **Never use a damaged abrasive!**
 - **Use the machine never with defective or without mounted guard**
- HIGHEST RISK OF INJURY!**

Ambient conditions

The machine may be operated:

humidity

max. 70%

temperature

+5°C to +40°C (+41°F to +104°F)

The machine shall not be operated in areas exposed to increased fire or explosion hazard.

Prohibited use

- The operation of the machine outside the stated technical limits described in this manual is forbidden.
- Operation of the machine function without emergency device is prohibited.
- The use of the machine not according with the required dimensions is forbidden.
- The use of the machine not being suitable for the use of the machine and not being certified is forbidden.
- Any manipulation of the machine and parts is forbidden.
- The use of the machine for any purposes other than described is forbidden.
- The unattended operation on the machine during the working process is forbidden!
- It is not allowed to leave the immediate work area during the work is being performed.

12.2 Security instructions

Missing or non-readable security stickers have to be replaced immediately!

The locally applicable laws and regulations may specify the minimum age of the operator and limit the use of this machine!

To avoid malfunction, machine defects and injuries, read the following security instructions!



- **Keep your work area dry and tidy! An untidy work area may cause accidents. Avoid slippery floor.**



- **Make sure the work area is lighted sufficiently**
- **Do not overload the machine**
- **Provide good stability and keep balance all times**



- **Avoid abnormal working postures! Make sure you stand squarely and keep balance at all times.**



- **Keep away from the running abrasive!**



- **Always stay focused when working. Reduce distortion sources in your working environment. The operation of the machine when being tired, as well as under the influence of alcohol, drugs or concentration influencing medicaments is forbidden.**



- **The machine must be operated only by trained persons (knowledge and understanding of this manual), which have no limitations of motor skills compared with conventional workers.**



- **Do not allow other people, particularly children, to touch the machine or the cable. Keep them away from your work area.**



- **Make your workshop childproof.**



- **Make sure there is nobody present in the dangerous area. The minimum safety distance is 2m**



- **Wear suitable work clothes! Do not wear loose clothing or jewelry as they might get caught in moving parts and cause severe accidents! Wear a hair net if you have long hair.**



- **Use personal safety equipment: dust mask, ear protectors and safety goggles when working with the machine.**



- **Never leave the machine running unattended! Before leaving the working area switch the machine off and wait until the machine stops.**



- **Always disconnect the machine prior to any actions performed at the machine.**



- **Avoid unintentional starting**



- **Do not use the machine with damaged switch**



- **The plug of an electrical tool must strictly correspond to the socket. Do not use any adapters together with earthed electric tools**



- **Each time you work with an electrically operated machine, caution is advised! There is a risk of electric shock, fire, cutting injury;**

- **Protect the machine from dampness (causing a short circuit)**

- **Use power tools and machines never in the vicinity of flammable liquids and gases (danger of explosion)**

- **Check the cable regularly for damage**

- **When working with the machine outdoors, use extension cables suitable for outdoor use**

- **Do not use the cable to carry the machine or to fix the work piece**

- **Protect the cable from heat, oil and sharp edges**

- **Avoid body contact with earthed**

- **Before starting the machine remove any adjusting wrenches and screwdrivers**

- **Hold the workpiece good with both hands**

- **Rotating parts can cause severe cut injuries**

- **Keep any machine that is not being used out of reach of children**

12.3 Remaining risk factors



WARNING

It is important to ensure that each machine has remaining risks. In the execution of all work (even the simplest) greatest attention is required. A safe working depends on you!

Even if the machine is used as required it is still impossible to eliminate certain residual risk factors totally. The following hazards may arise in connection with the machine's construction and design:

- Risk of injury to the hands / fingers by the rotating sanding belt during operation.
- Risk of injury due to sharp edges of the workpiece, especially in non-fixed with a suitable tool / device workpiece.
- Risk of injury: hair and loose clothing, etc. can be captured and wound up! Safety regulations must be observed with regard to clothing.
- Risk of injury due to contacting with live electrical components.
- Risk of injury due to breakage or cracking of the abrasive
- Risk of injury due to dust emissions, treated with harmful agents workpieces
- Risk of injury to the eye by flying debris, even with safety goggles.
- Risk of injury to the hearing by prolonged labor without hearing protection.
- Risk of injury due to kickback:
Kickback is a sudden reaction this causes the ejection of the workpiece to the direction of the operator.

These risk factors can be minimized through obeying all security and operation instructions, proper machine maintenance, proficient and appropriate operation by persons with technical knowledge and experience.

13 ASSEMBLY

13.1 Preparatory activities

13.1.1 Delivery content

Check right after receiving the machine, whether all parts according to the parts list are complete and without damage. Each visible defect and in particular wrong amounts and transport damages must be clearly noted on the delivery documents, otherwise the goods shall be considered as taken over and fully accepted under the sole responsibility of the customer.

13.1.2 Workplace requirements

The workplace has to fulfill the requirements.

The ground has to be even, in level and hard. It must be suitable at least to weight it with double weight per square meter than the machines net weight.

The chosen workplace must have access to a suitable electric supply net hat complies with the machines requirements.

13.1.3 Transport

The machine can be transported in package with a forklift.

The machine is very heavy. The machine shall be lifted from crate with a suitable lifting device only that is certified to be able to carry the machines load.



WARNING

The lifting and transportation of the machine must only be carried out by qualified staff and must be carried out with appropriate equipment.

Note that lifting equipment used (crane, forklift, sling, etc.) must be in perfect condition. To maneuver the machine in the packaging can also a pallet jack or a forklift be used.

13.1.4 Preparation of the surface

Uncoated metal machine parts have been insulated with a greasy layer to inhibit corrosion.

This layer has to be removed. You can use standard solvents that do not damage the machine surface.



NOTICE

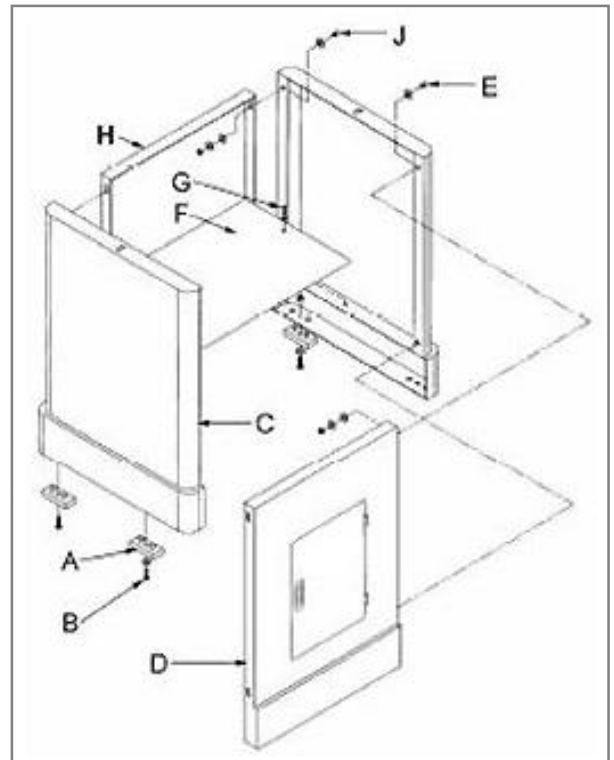
Do not use solvents based on nitrite, aggressive solvents like break cleaners or scrubbing agents!

These damage the machine surface.

13.2 Assembly

13.2.1 Machine stand

- Attach the four rubber pads (A) to the bottoms of the side panels with screws, 4 flat washers and 4 hex nuts. Attach the side panels (C) to the front panel (D) with 4 hex cap bolts, 8 flat washers, 4 lock washer, and 4 hex nuts (E).
- Mount the shelf (F) to the inside of the stand with 2 pan head screws M5 (G) and 2 lock washers.
- Finish stand assembly by attaching rear panel to side panels. Make sure stand is sitting evenly on a level surface before tightening hardware.



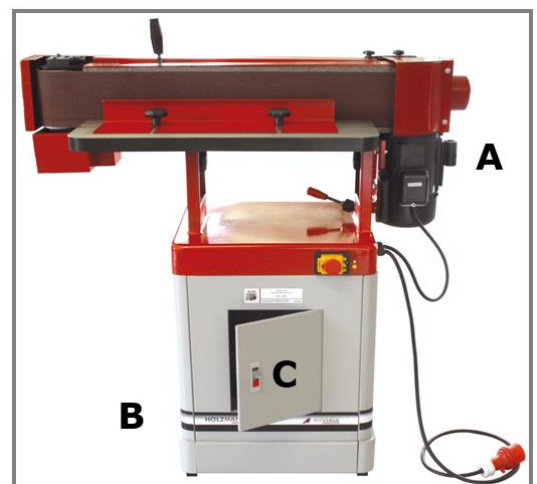
13.2.2 Sanding unit installation



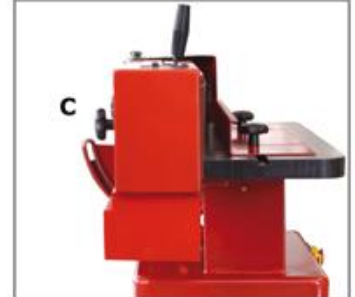
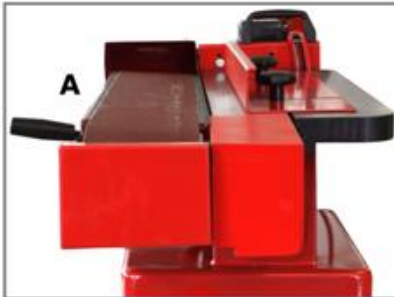
WARNING

The sanding unit is heavy! Use great care and adequate resources when lifting the unit up onto the stand! Failure to comply may cause serious injury and/or damage to the sander and/or property!
Use the aid of a second person!

- With the aid of another person, carefully lift the sanding unit (A) out of the shipping box and up onto the machine stand (B).
- Line up threaded holes in the base with the holes in the stand.
- Open the machine stand door (C) and through the opening attach main unit to stand with two hex cap screws to lock washers and two flat washers and tighten with a wrench.



- The sanding unit (A) is presently in the horizontal position.
- Pull lock handle (B) forward to unlock the platen assembly
- Tilt sanding unit to the vertical position (C) then push the lock handle (B) to lock the platen assembly in place

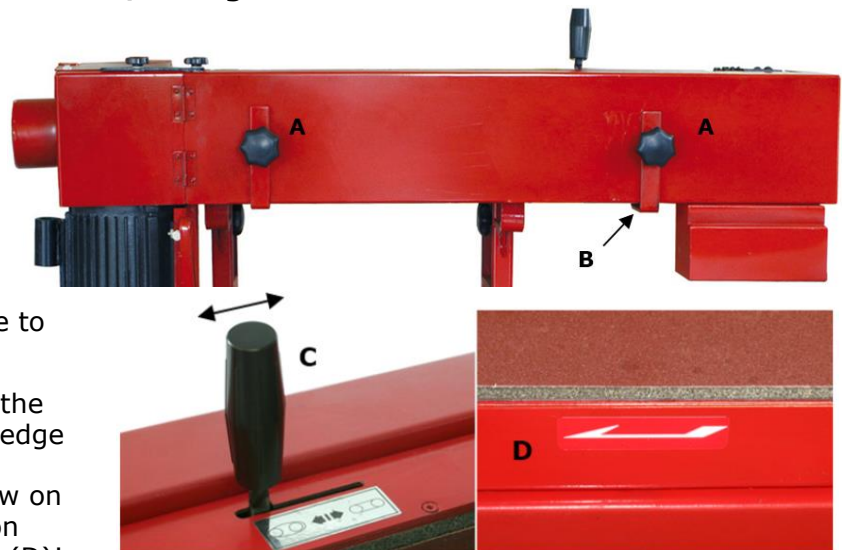


NOTICE

Do not turn the lock handle. Turning or rotating the lock handle will change the tension of the locking assembly. This may cause the locking assembly not to work. Making it necessary for adjustment before using the machine

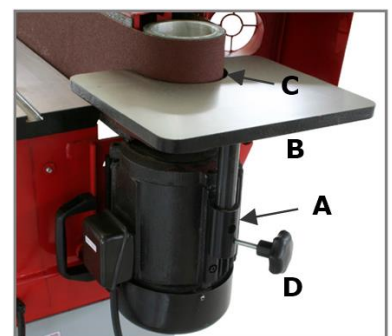
13.2.3 Sanding belt installation / change

- From the rear of the sander, remove the belt guard (B) by unscrewing two lock knobs (A)
- Take out the sanding belt and removable fence from behind the belt guard
- Place the handle (C) on belt tensioning lever
- Remove the tension from the mechanism by moving the handle to the loose position
- Place belt on both rollers so that the edge of the belt is even with the edge of the rollers
- Make sure that the direction arrow on sanding belt matches the direction indicator on the top of the platen (D)!
- Tighten the belt by moving the handle (C) to the tight position
- Rotate the belt by hand in the direction indicated by the arrow on the top of the platen.
- If the belt tracking needs adjustment see belt tracking adjustment



13.2.4 Extension table

- Attach the extension bracket (A) to the motor housing with 2 socket head cap screws
- Slide the shaft of the extension table (B) into the bracket
- Positioning the table so the opening wraps around the drive drum (C)
- Fix the position of the table with the lock knob (D)



13.3 Power supply



ATTENTION

**When working with non-grounded machines:
Severe injury or even death may arise though electrocution!**

Therefore: The machine must be operated at a grounded power socket

The connection of the machine to the electric power supply and the following checks have to be carried out by a respectively trained electrician only.

1. The electronic connection of the machine is designated for operation with a grounded power socket!
2. The mains supply must be secured with 16A:
3. If the connector plug doesn't fit or if it is defect, only qualified electricians may modify or re-new it!
4. The grounding wire should be held in green-yellow.
5. A damaged cable has to be exchanged immediately!
6. Check, whether the feeding voltage and the Hz comply to the required values of the machine. A deviation of feeding voltage of $\pm 5\%$ is allowed (e.g.: a machine with working voltage of 380V can work within a voltage bandwidth of 370 till 400V.
7. After connecting, check the right running direction!
8. Make sure that a possible extension cord is in good condition and suitable for the transmission of power. An undersized cord reduces the transmission of power and heats up.
9. A damaged cable must be replaced immediately



NOTICE

Operation is only allowed with safety switch against stray current (RCD max. stray current of 30mA)



NOTICE

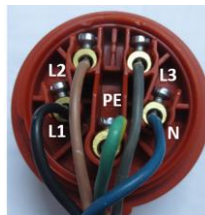
Use only permitted extension cable with cross-section the one in the following table declared.



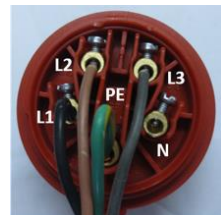
Voltage	Extension	Cross-section
220 V-240 V 50 Hz	<27 m	1,5 mm ²
	<44 m	2,5 mm ²
	<70 m	4,0 mm ²
	<105 m	6,0 mm ²

Plug 400V:

5-wire:
with
N-conductor



4-wire:
without
N-conductor




14 OPERATION

Device to be operated in a perfect state only. Inspect the device visually every time it is to be used. Check in particular the safety equipment, electrical controls, electric cables and screwed connection for damage and if tightened properly. Replace any damaged parts before operating the device.

14.1 Operation instructions

	<p style="text-align: center;">WARNING</p> <p>Perform all machine settings with the machine being disconnected from the power supply!</p>	
---	---	---

	<p style="text-align: center;">NOTICE</p> <p>Check before starting work:</p> <ul style="list-style-type: none"> • All cables and plugs • Table and safety fence on tight fit • The free and centered run of sanding belt <p>The sanding:</p> <ul style="list-style-type: none"> • Always use the proper, located in perfect condition abrasives. (Change wear of abrasives immediately!) With abrasive in good condition you obtain a good grinding result. • Do not exert too much pressure to the sanding abrasive • The machine has no clamp opportunity, so it is important, as the whole area hang up the work piece on the worktable and maintain a firm grip!
---	---

14.2 Switch unit

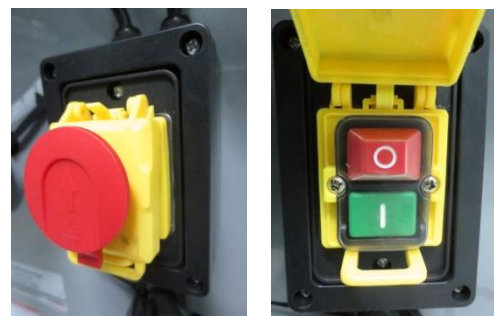
If you want to press the **ON OFF** switch, the combined **EMERGENCY STOP** switch must be lifted.

ON-OFF switch:

Press green button (**I**): turn on

Press red button (**O**): turn off

The flap of the switch unit must not be engaged during operation!



INFO:

When closed, the main switch can be operated as an EMERGENCY STOP switch

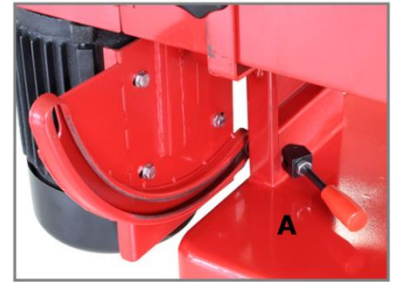
EMERGENCY-switch:

For emergencies push on the red cap. The machine switched off immediately!

14.3 Operating

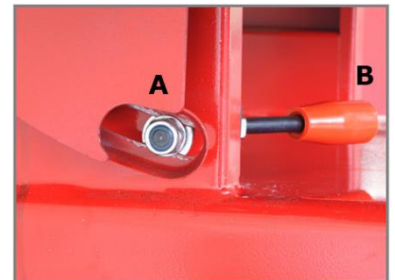
14.3.1 Angle adjustment sanding unit

- Pull the lock handle (A) forward to release the tension
- Move the sanding unit to the desired position
 - + Use a combination square between the table and sanding unit to get precise angles!
- Fix the sanding unit with the lock handle (A) in desired position



14.3.2 Tension adjustment sanding unit lock

- Place the sanding unit in the horizontal position and do not lock Tension eccentric block by tightening the nut (A):
- Tighten the nut with a wrench. turn the nut in by ¼ turn increments and test locking handle for proper tension
 - + The lock handle (B) is properly tensioned when it requires positive force to move the eccentric block from one side to the other. The sanding unit must stay in a locked position without sliding once the handle has been moved to the locked position!



14.3.3 Belt tracking adjustment

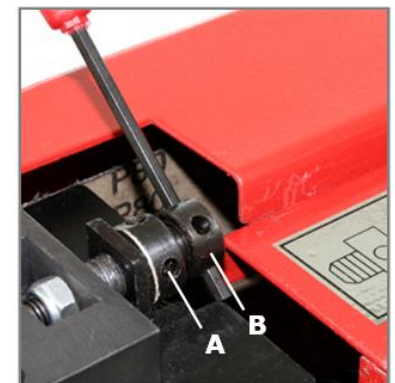
Belts stretch with wear. You may have to adjust tracking with a new belt.

- Push the belt by hand from left to right (the direction indicated to the direction arrow) and observe the belt's position on the rollers
 - + The oscillating movement of the belt is by design. Observe the belt's range of movement from its highest to lowest position. The edges of the belt should not have a tendency to move above or below the edges of the rollers.

To adjust the belt tracking:

- Loosen the micro adjusting nut (A) with the shaft
- The blade tracking is adjustable by the micro adjusting screw (B).

TIP: Moving the belt tracking tool away from you raises the belt on the drum and towards you lowers the belt on the drum!



- Retighten the micro adjusting nut (A)
- Connect the machine to power supply
- Turn on the machine and observe the belt's up and down movement
 - + The adjustment is correct when the edges of the belt do not move above or below the edges of the rollers.
- Readjust if necessary

If the tracking cannot be corrected the motor mount tracking must be adjusted.

14.3.4 Motor mount tracking adjustment

NOTICE

The motor mounting is set at the factory and should not require any further adjustment. If, however, you are not able to track the belt using the belt tracking adjustment assembly on the sanding platen, the motor mount bolts will have to be adjusted.

- Slightly loosen the motor mount nuts (B) just enough so the tracking screws (A) can be turned to make an adjustment
- Loosen the hex nuts (C) which secures the tracking nuts (A)
- Turn a tracking screw (A) a ¼ turn
- Rotate the sanding belt by hand to observe which direction the adjustment is causing the belt to move
 - + If the belt starts to travel in the wrong direction back off a quarter turn and tighten the other screw a quarter turn. This should start the belt moving in the proper direction.
- Tighten both locking nuts (C) and motor mount nuts (B).
- Then return to the belt tracking adjustment section and again attempt to fine tune the tracking



14.3.5 Table adjustment

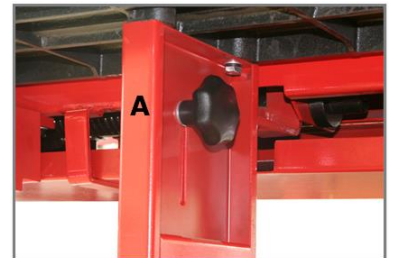
WARNING

Do not position table below sanding belt!

Keep an overlap of at least 2mm between table and sanding belt to avoid material and/or fingers getting caught!

Failure to comply may cause serious injury!

- Loosen two lock knobs (A)
- Raise or lower work table to the desired position
- Tighten with lock knobs



14.4 Sanding

WARNING

Removing the belt guard exposes more of the sanding belt!

Replace the belt guards immediately after completing any sanding that requires its removal!

Failure to comply may cause serious injury!

14.4.1 Horizontal sanding

For horizontal sanding the sanding unit is locked in the horizontal position.

The removable fence and the backstop can be mounted on the table as follows:

Mounting the removable fence:

- Place flat washer and guide blocks on two lock knobs (B)
- Insert the guide blocks into the miter slot and position the lock knobs on the table as shown
- Place the removable fence (A) on the table and secure by tightening the lock knobs

Mounting the back stop:

- Swivel the roller cover (A)
- Place the backstop (B) with the pin in the positioning hole and secure with washer and the lock knob (C)
- Return the roller cover

14.4.2 Vertical sanding

For vertical sanding the sanding unit is locked in the vertical position.

The backstop and/or the miter gauge can be mounted.

Mounting the backstop:

- Swivel the roller cover (A)
- Place the backstop (B) with the pin in the positioning hole and secure with washer and the lock knob (C)
- Return the roller cover

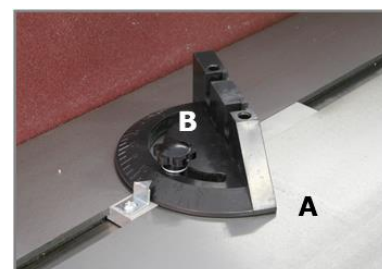
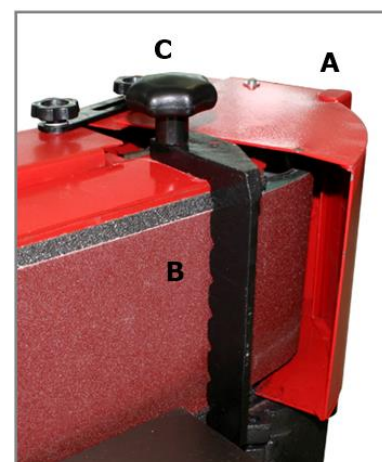
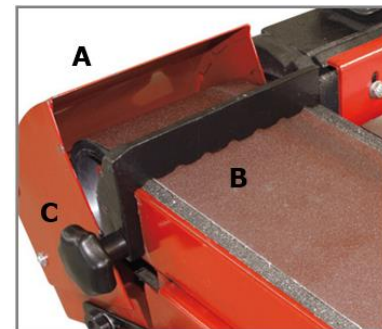
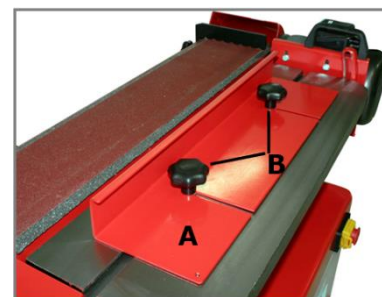
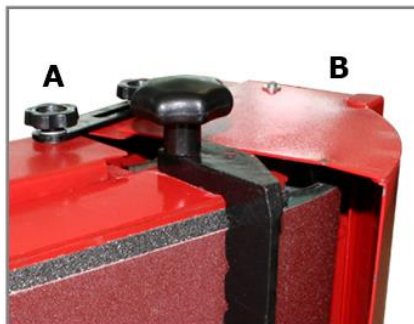
Mounting the miter gauge:

- Slide the guide bar on the miter gauge (A) into the miter slot on the table
- Set the miter angle and secure the miter gauge by tightening the lock handle (B)

14.4.3 Contour sanding



Contour sanding is done from the extension table mounted on the motor where the sanding belt wraps around the drive drum. To set up the sander for contour sanding:

- Loosen the lock knobs (A) which secure the roller cover with the dust collector plug (B)
- Swing the roller cover back till the drive drum is reachable
- Fix the roller cover in this position with the lock knobs (A)
- Insert the extension table (C) by inserting the post in the bracket (D)
- Set the table to the desired height and secure the position with lock knob (E)



IMPORTANT: The roller cover with dust collector plug must always be closed if the extension table is not in use!

15 MAINTENANCE

	<p style="text-align: center;">ATTENTION</p> <p>Perform all maintenance machine settings with the machine being disconnected from the power supply! Serious injury due to unintentional or automatic activation of the machine!</p>	
---	---	---

The machine does not require extensive maintenance. If malfunctions and defects occur, let it be serviced by trained persons only.

Check regularly the condition of the security stickers. Replace them if required.

Check regularly the condition of the machine.

NOTICE
<p>Clean your machine regularly after every usage – it prolongs the machines lifespan and is a prerequisite for a safe working environment.</p> <p>Repair jobs shall be performed by respectively trained professionals only!</p>

Store the machine in a closed, dry location.


Untighten the tension of the sanding belt!

15.1 Maintenance plan

After each workshift:

- Remove chips and sanding dust from the device
- Clean the housing if necessary

15.2 Cleaning

	<p style="text-align: center;">NOTICE</p> <p>The usage of certain solutions containing ingredients damaging metal surfaces as well as the use of scrubbing agents will damage the machine surface!</p> <p>Clean the machine surface with a wet cloth soaked in a mild solution</p>
---	--

15.3 Disposal

Do not dispose the machine in residual waste. Contact your local authorities for information regarding the available disposal options. When you buy at your local dealer for a replacement unit, the latter is obliged to exchange your old.



16 TROUBLE SHOOTING

BEFORE YOU START WORKING FOR THE ELIMINATION OF DEFECTS, DISCONNECT THE MACHINE FROM THE POWER SUPPLY.

Trouble	Possible cause	Solution
Machine stops or will not start	<ul style="list-style-type: none"> ▪ ON/OFF-switch damaged ▪ Saw unplugged ▪ Overload tripped ▪ Fuse blown or circuit breaker tripped ▪ Cord damaged 	<ul style="list-style-type: none"> ▪ Check the switch ▪ Check all power connections ▪ Allow motor to cool and reset by pushing off switch ▪ Change fuse or reset circuit brake ▪ Change cable
Machine slows down during working	<ul style="list-style-type: none"> ▪ Exerting too much pressure to the sanding abrasive 	<ul style="list-style-type: none"> ▪ Exert less pressure on the work piece
Bad grinding results	<ul style="list-style-type: none"> ▪ Abrasive too coarse-grained 	<ul style="list-style-type: none"> ▪ Use less coarsed abrasive
To rapid wear of	<ul style="list-style-type: none"> ▪ Abrasive too fine-grained 	<ul style="list-style-type: none"> ▪ Use more coarsed abrasive
Grinding angle is wrong	<ul style="list-style-type: none"> ▪ Adjusted angle is wrong 	<ul style="list-style-type: none"> ▪ Readjust the angle
Sanding belt runs in wrong direction	<ul style="list-style-type: none"> ▪ Power supply 	<ul style="list-style-type: none"> ▪ Change Phases (only 400V)
Sanding belt runs out of sanding belt bed	<ul style="list-style-type: none"> ▪ Sanding belt is mounted wrong 	<ul style="list-style-type: none"> ▪ Mount the sanding belt centrally
Work piece burns during the working process	<ul style="list-style-type: none"> ▪ Abrasive is dirty from oil ▪ Too much pressure 	<ul style="list-style-type: none"> ▪ Change abrasive ▪ Reduce pressure

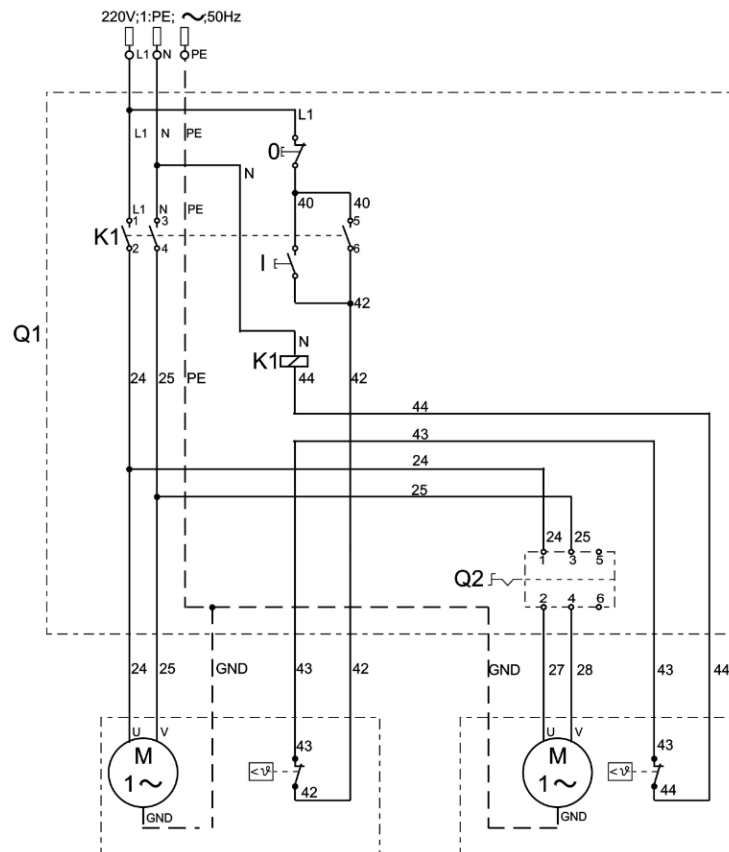
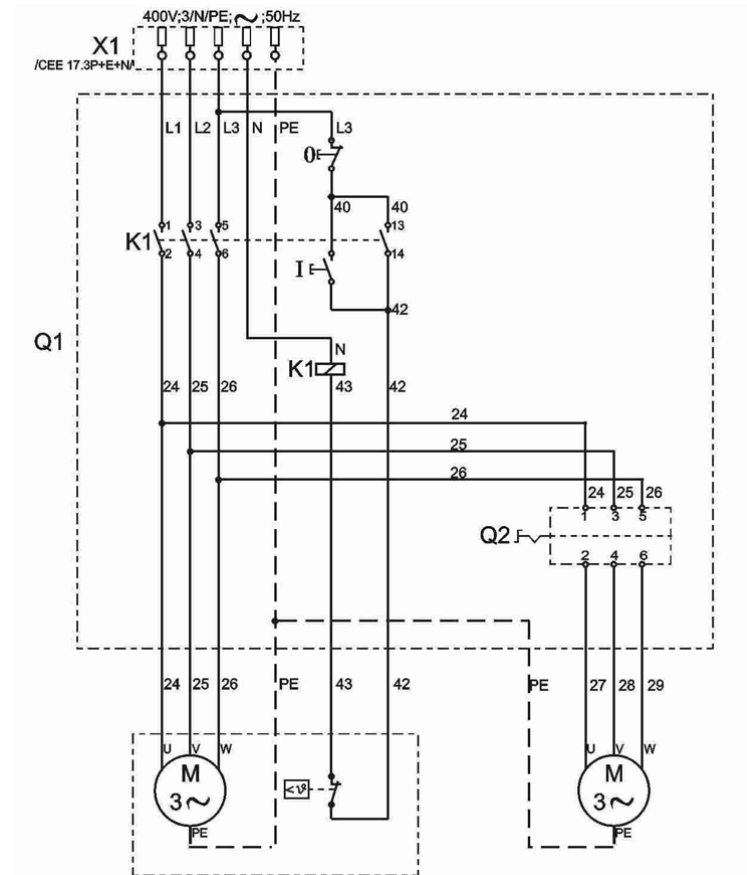
MANY POTENTIAL SOURCES OF ERROR CAN BE CLEARED BY THE EXPERTLY CONNECTION TO THE ELECTRICITY GRID.



NOTICE

Should you in necessary repairs not able to properly to perform or you have not the prescribed training for it always attract a workshop to fix the problem.

18 SCHALTPLAN / WIRING DIAGRAM



19 ERSATZTEILE / SPARE PARTS

19.1 Ersatzteilbestellung / spare parts order

Mit HOLZMANN-Ersatzteilen verwenden Sie Ersatzteile, die ideal aufeinander abgestimmt sind. Die optimale Passgenauigkeit der Teile verkürzen die Einbauzeiten und erhöhen die Lebensdauer.

HINWEIS

Der Einbau von anderen als Originalersatzteilen führt zum Verlust der Garantie!

Daher gilt: Beim Tausch von Komponenten/Teilen nur Originalersatzteile verwenden

Beim Bestellen von Ersatzteilen verwenden Sie bitte das Serviceformular, das Sie am Ende dieser Anleitung finden. Geben Sie stets Maschinentype, Ersatzteilnummer sowie Bezeichnung an. Um Missverständnissen vorzubeugen, empfehlen wir mit der Ersatzteilbestellung eine Kopie der Ersatzteilzeichnung beizulegen, auf der die benötigten Ersatzteile eindeutig markiert sind.

[Bestelladresse](#) sehen Sie unter [Kundendienstadressen](#) im Vorwort dieser Dokumentation.

With original HOLZMANN spare parts you use parts that are attuned to each other shorten the installation time and elongate your products lifespan.

IMPORTANT

The installation of other than original spare parts voids the warranty!

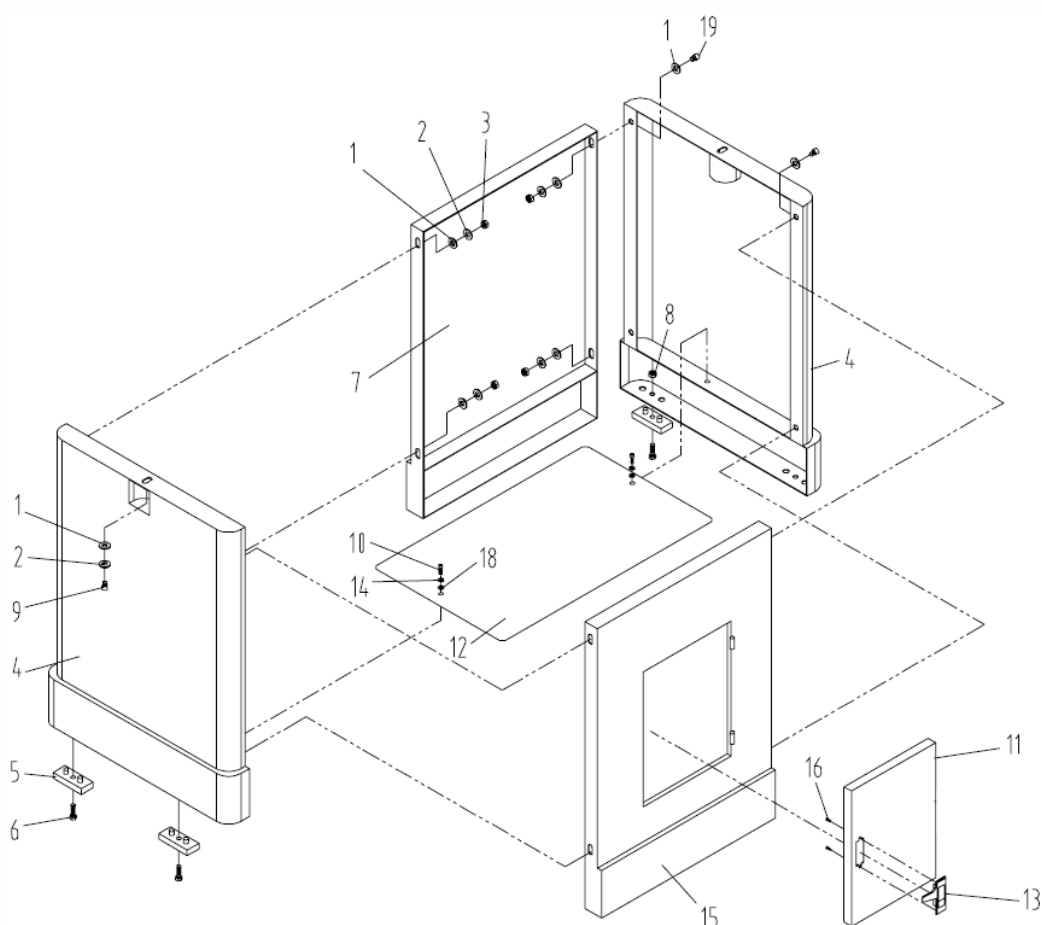
So you always have to use original spare parts

When you place a spare parts order please use the service formular you can find in the last chapter of this manual. Always take a note of the machine type, spare parts number and partname. We recommend to copy the spare parts diagram and mark the spare part you need.

[You find the order address in the preface of this operation manual.](#)

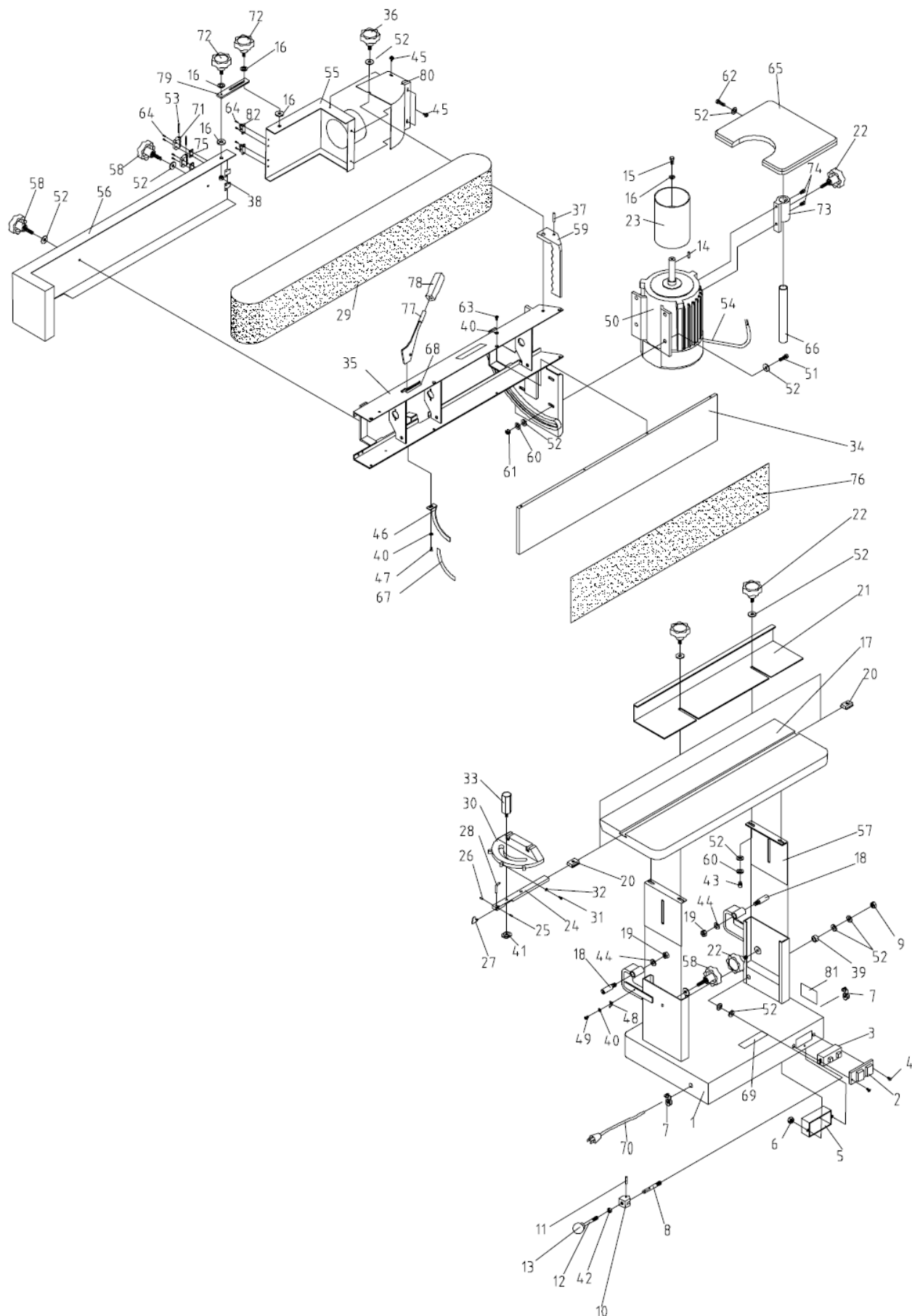
19.2 Explosionszeichnung / explosion drawing

Stand Assembly



Index No.	Description	Size	Qty.
1.....	Flat Washer5/16"	22
2.....	Lock Washer5/16"	10
3.....	Hex Nut5/16"-18.....	8
4.....	Side Panel.....		2
5.....	Pad		4
6.....	Screw		4
7.....	Rear Panel		1
8.....	Hex Nut5/16"-18.....	4
9.....	Hex Cap Screw5/16"-18x1-1/4"	2
10.....	Pan Head Screw	M5x10	2
11.....	Door		1
12.....	Shelf.....		1
13.....	Latch Assembly		1
14.....	Lock Washer	M5.....	2
15.....	Front Panel (W/Door).....		1
16.....	Screw		2
18.....	Flat Washer	M5.....	2
19.....	Hex Cap Screw5/16"-18x3/4"	8

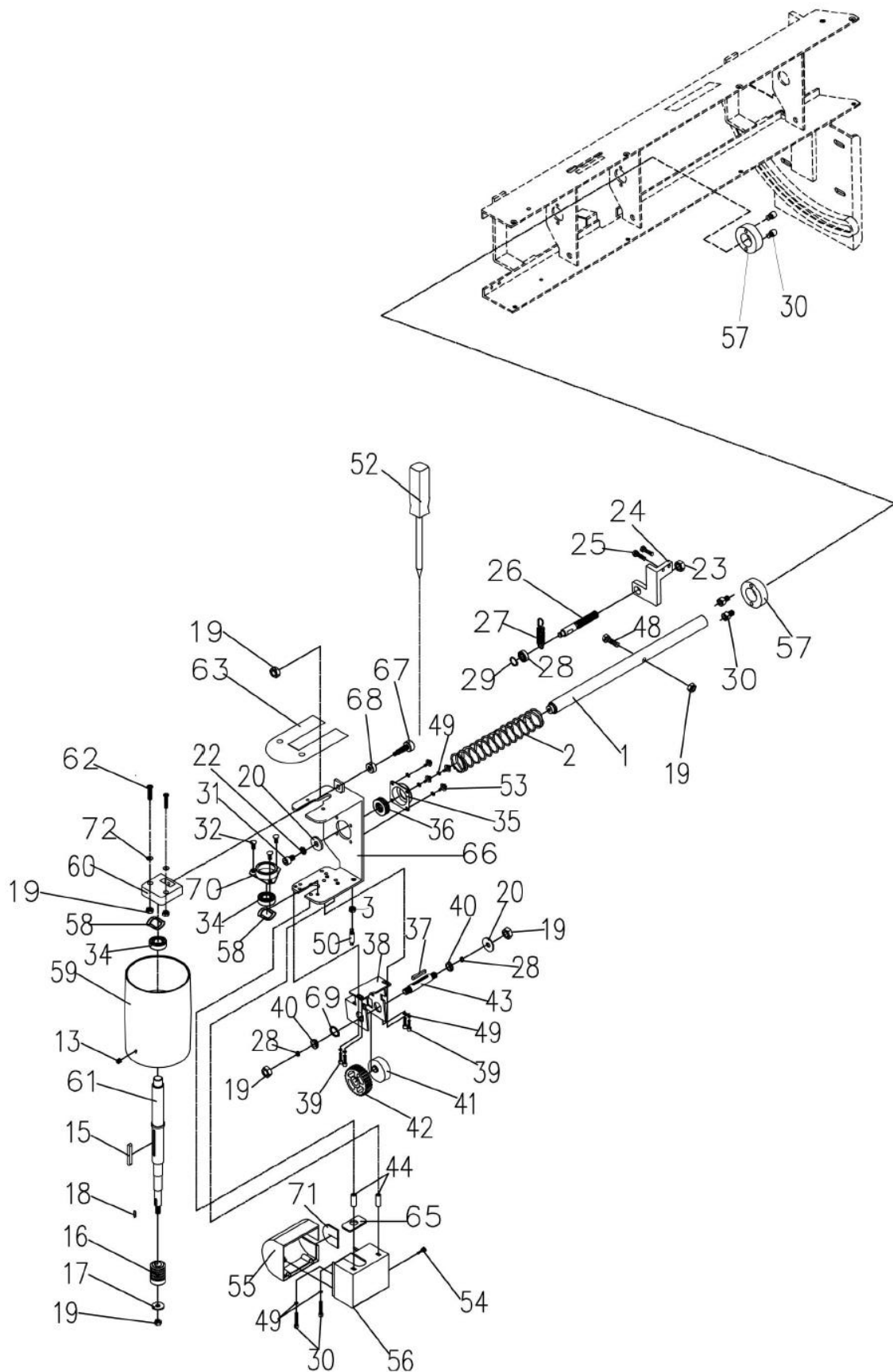
Table and motor – Assembly



Index No.	Description	Size	Qty.
1	Base		1
2	Push Button Switch		1
3	Switch Panel		1
4	Pan Head Screw	#10-24×1-1/2"	3
5	Switch Box		1
6	Hex Nut	#10-24	5
7	Strain Relief		2
8	Work Table Bar		1
9	Nylon Insert Lock Nut	3/8"-16	1
10	Locking Block		1
11	Spring Pin	Ø4	1
12	Lock Handle		1
13	Knob		1
	Lock Handle Assembly (#12, #13)		1
14	Key	5×5×25	1
15	Hex Cap Screw	1/4"-20×3/4"	1
16	Flat Washer	1/4"	5
17	Table		1
18	Screw	M10	2
19	Hex Nut	M10	2
20	Guide Block		2
21	Fence		1
22	JET Knob	M8×12mm	3
23	Drive Drum		1
24	Guide Bar		1
25	Pin	Ø3	1
26	Set Screw	1/4"-20×1/4"	1
27	Location Plate		1
28	Pointer		1
29	Sanding Belt	6"W x 89"L	1
30	Miter Gauge Body		1
	Miter Gauge Assembly		
31	Pan Head Screw	#8-32×5/8"	3
32	Hex Nut	#8-32	3
33	Knob		1
34	Platen		1
35	Side Plate		1
	Hex Cap Screw (motor plate — not shown)	5/16"-18×1-1/4"	2
	Hex Nut (motor plate — not shown)	5/16"-18	2
36	JET Knob	M8×35mm	1
37	Pin	Ø6×40mm	1
38	Hex Nut	1/4"-20	2
39	Spacer		1
40	External Tooth Lock Washer	#10	11
41	Location Block		1
42	Hex Nut	3/8"-16	1
43	Hex Cap Screw	5/16"-18×5/8"	4
44	Lock Washer	3/8"	2
45	Washer Head Screw	#10-24 x 3/8"	3
46	Tilt Scale		1
47	Pan Head Screw	#10-24x3/4"	1
48	Pointer		1
49	Pan Head Screw	#10-24x3/8"	2
50	Motor	1-1/2HP, 1Ph	1
51	Hex Cap Screw	5/16"-18x1-1/4"	5
52	Flat Washer	5/16"	10


Index No.	Description	Size	Qty.
53	Pin		2
54	Motor Cord		1
55	Dust Port		1
56	Sanding Belt Cover		1
57	Up-Down Table Mount Plate		2
58	JET Knob	M8X20mm	4
59	Back Stop Bracket		1
60	Lock Washer	5/16"	14
61	Hex Nut	5/16"-18	6
62	Hex Cap Screw	5/16"-18x1-1/4"	2
63	Flat Head Screw	M5x12	8
64	Flat Head Screw	M4x20	8
65	Extension Table		1
66	Supporting Rod		1
67	Tilt Angle Scale Label		1
68	Direction Label		1
69	Warning Label		1
70	Power Cord		1
71	Hinge		2
72	Knob	M6	2
73	Supporting Seat		1
74	Socket Head Cap Screw	#10-24x3/4"	2
75	Spacer		2
76	Graphite Pad		1
77	Belt Tension Arm		1
78	Tension Arm Handle		1
79	Connection Plate		1
80	Drum Guard		1
81	ID Label		1
82	Hinge Bracket		2

Idle drum - Assembly



Index No.	Description	Size	Qty.
1.....	Tension Bar.....		1
2.....	Spring.....		1
3.....	Hex Nut.....	5/16"	1
13.....	Socket Set Screw.....	M6x6	2
15.....	Key.....	5x5x45mm	1
16.....	Worm.....		1
17.....	Spacer.....		1
18.....	Key.....	4x4x25	1
19.....	Nylon Insert Lock Nut.....	5/16"	6
20.....	Flat Washer.....	5/16"	4
22.....	Lock Washer.....	5/16"	6
23.....	Nylon Insert Lock Nut.....	M14	2
24.....	Bracket.....		1
25.....	Hex Cap Screw.....	1/4"-20x3/4"	2
26.....	Lead Screw.....		1
27.....	Spring.....		1
28.....	Ball Bearing.....	698	3
29.....	Retaining Ring.....	STW-8	1
30.....	Socket Head Cap Screw.....	M5x20	2
31.....	Socket Head Cap Screw.....	5/16"x1"	1
32.....	Flat Head Screw.....	M4x12	3
34.....	Ball Bearing.....	6202LLU	2
35.....	Bearing Housing.....		1
36.....	Ball Bearing.....	6003ZZ	1
37.....	Key.....	4x4x30	1
38.....	Gear Housing.....		1
39.....	Socket Head Cap Screw.....	M5x10	5
40.....	Bushing.....		2
41.....	Cam.....		1
42.....	Worm Gear.....		1
43.....	Worm Gear Shaft.....		1
44.....	Column.....		2
48.....	Hex Cap Screw.....	5/16"-18x1-3/4"	1
49.....	Lock Washer.....	M5	6
50.....	Rod.....		1
52.....	Belt Tracking Tool.....		1
53.....	Round Head Slotted Machine Screw.....	#10-24x1/4"	4
54.....	Self Tapping Screw.....	M3x6	1
55.....	Dust Hood (Left).....		1
56.....	Dust Hood (Right).....		1
57.....	Ring.....		2
58.....	Wave Washer.....		2
59.....	Idle Drum.....		1
60.....	Track Adjusting Block.....		1
61.....	Drive Shaft.....		1
62.....	Button Head Socket Screw.....	5/16"X1-3/4	2
63.....	Guard.....		1
65.....	Foam Sheet for Drive Shaft.....		1
66.....	Idle Drum Bracket.....		1
67.....	Track Adjusting Screw.....		1
68.....	Track Adjusting Nut.....		1
69.....	Retaining Ring.....	S10	1
70.....	Bearing Housing.....		1
71.....	Foam Sheet for Lead Screw.....		1
72.....	Cone Disc Spring.....		2

20 EG-KONFORMITÄTSERKLÄRUNG/CE-CERTIFICATE OF CONFORMITY

	Inverkehrbringer / Distributor HOLZMANN MASCHINEN® GmbH 4170 Haslach, Marktplatz 4, AUSTRIA Tel.: +43/7289/71562-0; Fax.: +43/7289/71562-4 www.holzmann-maschinen.at
Bezeichnung / name	
KANTENSCHLEIFMASCHINE OSZILLIEREND / BELT SANDING MACHINE WITH OSCILLATION	
Typ / model	
KOS 2260C	
EG-Richtlinien / EC-directives	
•2006/42/EG; •2014/35/EU, •2014/30/EU	
Angewandte Normen / applicable Standards	
•EN 12100-1, •EN 12100-2, •EN 349, •EN 55015, •EN 60204-1	

Hiermit erklären wir, dass die oben genannten Maschinen aufgrund ihrer Bauart in der von uns in Verkehr gebrachten Version den grundlegenden Sicherheits- und Gesundheitsanforderungen der angeführten EG-Richtlinien entsprechen. Diese Erklärung verliert ihre Gültigkeit, wenn Veränderungen an der Maschine vorgenommen werden, die nicht mit uns abgestimmt wurden.

Hereby we declare that the above mentioned machines meet the essential safety and health requirements of the above stated EC directives. Any manipulation or change of the machine not being explicitly authorized by us in advance renders this document null and void.

Technische Dokumentation
 HOLZMANN-MASCHINEN GmbH
 4170 Haslach, Marktplatz 4

Haslach, 05.08.2016
 Ort / Datum place/date



HOLZMANN MASCHINEN GmbH
 Marktplatz 4, 4170 Haslach
 weiterer Standort:
 Gewerbepark 8, 4707 Schlusberg
 www.holzmann-maschinen.at

DI (FH) Daniel Schörgenhuber
 Geschäftsführer / Director