

Operating instructions

— Ambient Air Filtering System

— LFS 101-3

— LFS 301-3



LFS 101-3



LFS 301-3

LFS
SERIES

Imprint

Product identification

Ambient Air Filtering System	Item number
LFS 101-3	5127101
LFS 301-3	5127301

Manufacturer

Stürmer Maschinen GmbH
Dr.-Robert-Pfleger-Str. 26
D-96103 Hallstadt

Fax: 0049 (0) 951 96555-55
E-Mail: info@holzkraft.de
Internet: www.holzkraft.de

Information regarding the operating instructions

Genuine operating instructions

Edition: 09.05.2022
Version: 1.03
Language: English

Author: FL

Information regarding the operating instructions

Copyright © 2021 Stürmer Maschinen GmbH, Hallstadt, Germany.

Stürmer Maschinen GmbH is the sole owner of the content of these operating instructions.
Forwarding and reproduction of this document as well as use and notification of its content is not permitted without explicit consent. Infringements will lead to claims for damages.

Subject to technical modifications and changes.

Content

1 Introduction	3
1.1 Copyright	3
1.2 Customer service	3
1.3 Disclaimer	3
2 Safety	3
2.1 Symbol explanation	3
2.2 Requirements to staff	4
2.3 Personal protective equipment	4
2.4 Safety data sheets	5
2.5 Safety labels on the air filter system	5
2.6 General Safety informations	5
3 Intended Use	6
3.1 Foreseeable misuse	6
3.2 Residual risks	6
4 Technical Data	7
4.1 Scope of delivery	7
4.2 Type plate	7
5 Description of device	7
5.1 Accessories	7
6 Transport, packaging, storage	8
6.1 Delivery and transport	8
6.2 Packaging	8
6.3 Storage	8
7 Assembly	8
7.1 Installation	8
7.2 Ceiling installation	9
8 Commissioning	9
8.1 Air inlet and air outlet during the filtering process	10
9 Operation	10
9.1 Switch on	10
9.2 Switch off	10
10 Care, maintenance and servicing/repair	11
10.1 Care after end of work	11
10.2 Filter replacement	11
10.3 Service and maintenance	12
11 Disposal, recycling of old equipment ..	12
11.1 Decommission	12
11.2 Disposal of electrical equipment	12
11.3 Disposal via municipal collection points	12
12 Troubleshooting	13
13 Spare parts	14
13.1 Ordering spare parts	14
13.2 Spare parts drawings	15
14 Electrical circuit diagrams	17
14.1 Electrical circuit diagram LFS 101-3	17
14.2 Electrical circuit diagram LFS 301-3	18
15 EC Declaration of Conformity	19

1 Introduction

You have made a good choice by purchasing the air filter system made by HOLZKRAFT.

Read the operating instructions carefully before commissioning.

This informs you about the proper commissioning, the intended use as well as the safe and efficient operation and maintenance of your air filter system.

The operating instructions are part of the air filter system. Always keep these operating instructions in the place of use of your air filter system. In addition, observe the local accident prevention regulations and general safety regulations for the area of application of the air filter system.

1.1 Copyright

The contents of these operating instructions are protected by copyright. Their application is permitted within the context of the use of the device. Any further use shall not be permitted without written consent by the manufacturer.

For the protection of our products, we shall register trademark, patent and design rights, as this is possible in individual cases. We strongly oppose any infringement of our intellectual property.

1.2 Customer service

Please contact your specialist retailer if you have any questions regarding your wood band saw or require any technical information. Your specialist retailer will be happy to support you with specialist advice and information.

Stürmer Maschinen GmbH
Dr.-Robert-Pfleger-Str. 26
D-96103 Hallstadt

Repair service:

Fax: 0049 (0)951 96555-111
E-Mail: service@stuermer-maschinen.de
Internet: www.holzkraft.de

Spare parts orders:

Fax: 0951 96555-119
E-Mail: ersatzteile@stuermer-maschinen.de

Please submit any information and experiences you make during application of the machine as these may be valuable for product improvements.

1.3 Disclaimer

All data in these operating instructions has been compiled on the basis of the state-of-the-art, valid standards and guidelines as well as our many years of expertise and experience.

The manufacturer shall not be liable for damage in the following cases:

- Non-observance of these operating instructions
- Unintended use
- Deployment of untrained staff
- Conversions at one's own responsibility
- Technical modifications
- Use of unauthorised spare parts

The actual scope of delivery may deviate from the descriptions and illustrations in this document as a result of special variants, optional extras or recent, technical modifications.

The obligations defined in the supply contract shall apply in addition to the general terms and conditions and the manufacturer's general terms and conditions as well as the statutory regulations valid at the time of the conclusion of the contract.

2 Safety

This section provides an overview of all important safety packages for personal protection as well as safe and reliable operation. The sections on individual service life phases contain additional, specifically applicable safety information.

2.1 symbol explanation

Safety instructions

The safety notes in these operating instructions are highlighted by symbols. The safety notes are introduced by signal words which express the concern of the risk.



DANGER!

This combination of symbol and signal words indicates an imminently dangerous situation which may lead to death or severe injuries if they are not avoided.



WARNING!

This combination of symbol and signal words indicates a possibly dangerous situation which may lead to death or severe injuries if they are not avoided



CAUTION!

This combination of symbol and signal words indicates a possibly dangerous situation which may lead to minor or light injuries if they are not avoided.



ATTENTION!

This combination of symbol and signal words indicates a possibly dangerous situation which may lead to property and environmental damages if they are not avoided.



NOTE!

This combination of symbol and signal words indicates a possibly dangerous situation which may lead to property and environmental damages if they are not avoided.

Tips and recommendations



Tips and recommendations

This symbol highlights useful tips and recommendations as well as information for an efficient and trouble-free operation.

It is necessary to observe the safety notes written in these operating instructions in order to reduce the risk of personal injuries and damages to property.

2.2 Requirements to staff

Qualifications

The different tasks described in this manual represent different requirements to the qualification of the persons entrusted with these tasks.



WARNING!

Danger in case of insufficient qualification of the staff!

Insufficiently qualified persons cannot estimate the risks while using the chain hoist and expose themselves and others to the danger of severe or lethal injuries.

- Have all works only performed by qualified persons.
- Keep insufficiently qualified persons out of the working area.

Only persons reliable working procedures can be expected from, are allowed to perform all works. Persons the responsiveness of which is affected by e. g. drugs, alcohol or medication, are not allowed to work with the machine.

The qualifications of the personnel for the different tasks are mentioned below:

Operator

The operator is instructed by the operating company about the assigned tasks and possible risks in case of improper behaviour. Any tasks which need to be performed beyond the operation in the standard mode must only be performed by the operator if it is indicated in these instructions and if the operating company expressly commissioned the operator.

Electrician:

Due to their technical training, knowledge and experience as well as their knowledge of the relevant standards and regulations, skilled electricians are able to carry out work on electrical systems and to independently identify and avoid possible hazards.

Qualified personnel

Due to their professional training, knowledge and experience as well as their knowledge of relevant regulations the specialist staff is able to perform the assigned tasks and to recognise and avoid any possible dangers themselves.

Manufacturer

Certain works may only be performed by specialist personnel of the manufacturer. Other personnel is not authorized to perform these works. Please contact our customer service for the execution of all arising work.

2.3 Personal protective equipment

Personal protective equipment is intended to protect the health and safety of persons at work. Staff must wear the personal protective equipment indicated in individual sections of these operating instructions when carrying out the different tasks on the machine.

The personal protective equipment is described in the following section:



Respiratory protection

Respiratory protection is used to protect the respiratory tract and the lungs against the absorption of dust particles.



Hearing protection

Hearing protection protects against hearing damage caused by noise.



Eye protection

Protective goggles are intended to protect the eyes from flying parts.



Protective gloves

The protective gloves serve to protect the hands against sharp components as well as against friction, abrasions or deep injuries.



Safety boots

The safety boots protect the feet against crushes, falling parts and slipping over on slippery underground.



Protective clothes

Protective clothes are made of a tightly fitted fabric without the protruding parts of low tear strength.

2.4 Safety data sheets

Safety data sheets for hazardous materials can be obtained from your specialist dealer or by phone: +49 (0)951/96555-0. Specialist dealers can find safety data sheets in the download area of the partner portal.

2.5 Safety labels on the air filter system

The following safety labels are attached to the air filter system (fig. 1), which must be observed and followed.



Fig. 1: Safety labels

The safety labels attached to the air filter system must not be removed. Damaged or missing safety labels can lead to malfunctions, personal injury and material damage. They are to be replaced immediately.

If the safety labels are not immediately recognizable and comprehensible, the air filter system must be taken out of service until new safety markings have been affixed.

2.6 General Safety informations



ATTENTION!

Before starting, using, servicing or otherwise interfering with the device, read the instructions for use and maintenance carefully. Handling and working with the machine is only permitted for persons who are familiar with the handling and operation of the machine. Repairs, maintenance and upgrades may only be carried out by qualified personnel with the machine switched off and secured (unplug the mains plug!)

- The machine must not be modified in its design and must not be used for purposes other than those for which it is intended by the manufacturer.
- Use the safety devices. Never work without guards and keep them operational. Check that they are in working order before starting work.
- Always keep the machine and your working area clean and free of obstacles!
- Ensure sufficient lighting to minimise the risk of injury.
- Never work under the influence of concentration illnesses, fatigue, drugs, alcohol or medication.
- Remove tool keys and other loose parts from the machine after installation or repair before turning on the machine.
- All safety and danger instructions on the machine must be observed and kept in perfect condition.
- Do not wear loose clothing or jewellery. Keep gloves away from moving parts. Loose clothing, jewellery or long hair can get caught in moving parts.
- Always wear safety goggles when installing the air filter system or carrying out maintenance work on it. The use of personal protective equipment reduces the risk of injury.
- Keep children and persons not familiar with the machine away from your working area, the machine and tools.
- The machine may only be used, installed and maintained by persons who are familiar with it and have been informed about the dangers (minimum age 18 years).
- Do not pull on the mains cable around the plug from the socket. Protect the cable from heat, oil and sharp edges.
- Never leave the machine unattended and stay with the machine until it comes to a complete standstill. Then pull out the mains plug to protect against unintentional switch-on.

- Protect the machine from moisture (danger of short circuit!).
- Never use power tools and machines in the vicinity of flammable liquids and gases (danger of explosion!).
- Malfunctions that impair safety must be eliminated immediately.
- Before each use of the machine, make sure that no parts are damaged. Damaged parts must be replaced immediately to avoid sources of danger!
- Do not overload the machine! You will work better and safer in the specified performance range. Use the correct tools! Ensure that the tools are not damaged.
- Do not use the product if it cannot be switched on or off with the power switch.
- Avoid physical contact with grounded surfaces such as pipes, radiators, stoves, and refrigerators. There is an increased risk of electric shock.
- If you want to mount the product on a ceiling, make sure that the unit is securely fastened and that the ceiling can support the weight of the unit.
- Do not use faulty or damaged extension cords.
- Always unplug the power cord from the wall outlet before performing inspection, maintenance or cleaning procedures
- Always unplug the power cord from the wall outlet before performing inspection, maintenance or cleaning procedures.
- The machine must be connected to a properly installed and grounded power outlet that complies with all rules and regulations.
- Persons with pacemakers should consult their doctor before using this product. Operation of electrical devices in the immediate vicinity of a pacemaker may cause malfunction or failure of the pacemaker.
- Only use original spare parts and accessories to avoid possible hazards and risks of accidents.

3 Intended Use

The air filter system is designed exclusively for cleaning the air in workshops.

It can be used to extract and filter wood dust in the workplace.

Main filter is a F6 filter, which can filter particles with a size of 1 micron.

Pre-filter is a G4 filter that can filter particles with a size of 5 microns.

Any use other than this is considered improper use and misuse. The manufacturer is not liable for any damage resulting from this.

Intended use also includes observance of the operating instructions.

The device may only be operated, maintained and repaired by trained and authorised persons.



WARNING!

Risk of misuse!

Misuse of the air filter system can lead to dangerous situations.

For structural and technical changes to the air filter system, the company Stürmer Maschinen GmbH assumes no liability. Claims of any kind due to damage due to improper use are excluded.

3.1 Foreseeable misuse

- The air filter system must never be used without a filter.
- The air filter system must never be used to clean dust from surfaces.
- The air filter system must never be used to extract liquid or flammable substances or substances in explosive concentrations.
- The air filter system must not be used for extracting gases and vapours.

3.2 Residual risks

- Inhalation of particles smaller than 1 µm.
- Release of particles after damage or wear of the filters.
- Inhalation of particles when cleaning the filters.

4 Technical Data

Model	LFS 101-3	LFS 301-3
Length	505 mm	770 mm
Width / Depth	430 mm	610 mm
Height	260 mm	310 mm
Weight	15 kg	25 kg
Supply voltage	230 V	230 V
Max. volume flow, low level	595 m³/h	945 m³/h
Max. volume flow, medium level	680 m³/h	1035 m³/h
Max. volume flow, high level	765 m³/h	1675 m³/h
Filter category filter net	G4	G4
Filter category inner filter	F6	F6
Max. sound pressure level	64 dB(A)	69 dB(A)
Input power	100 W	300 W
Output power	50 W	150 W

4.1 Scope of delivery

LFS 101-3

- Remote control
- Transport handle
- Four eyelets for ceiling mounting
- Four ceiling hooks and four rubber feet
- Four chains with hooks for ceiling mounting

LFS 301-3

- Remote control
- Four eyelets for ceiling mounting
- Four rubber feet

4.2 Type plate




Umgebungsluftfiltersystem Ambient air filter system		 	
Typ Type	LFS 301-3	Serien-Nr. Serial no.	
Artikel-Nr. Item no.	5127301	Baujahr <small>Monat/Jahr</small> Year of manufacture <small>month/year</small>	
Gewicht Weight	25 kg	Netzanschluss Power connection	230 V / 50 Hz
Aufnahmeleistung Power Input	300 W	Schalldruckpegel Sound pressure level	69 dB(A)
Volumenstrom min/med/max Volume flow min/med/max	945 / 1035 / 1675 m³/h		
 Stürmer Maschinen GmbH Dr.-Robert-Pfleger-Str. 26, 96103 Hallstadt Deutschland / Germany			

Fig. 2: Type plate LFS 301-3

5 Description of device

Illustrations in this operating manual may differ from the original.



Fig. 3: Description of Ambient Air Filtering System LFS 101-3

- 1 Transport handle
- 2 Display with fuse
- 3 Remote control
- 4 Filter

5.1 Accessories

LFS 101-3

- Pocket filter 1 µm
Item filter: 5127411
- Prefilter 5 µm
Item number: 5127415

LFS 301-3

- Pocket filter 1 µm
Item number: 5127431
- Prefilter 5 µm
Item number: 5127435

6 Transport, packaging, storage

6.1 Delivery and transport

Delivery

Check the air filter system after delivery for visible transport damage. If you discover damage to the air filter system, report this immediately to the transport company or dealer.

Transport



CAUTION!

Injuries caused by parts falling over or off a forklift, pallet truck or transport vehicle.
Only use means of transport that can carry the total weight and are suitable for it.

Improper transport of individual devices, unsecured devices stacked on top of each other or next to each other in packed or already unpacked condition is accident-prone and can cause damage or malfunctions for which we do not grant any liability or guarantee.

Transport the scope of delivery secured against shifting or tilting with a sufficiently dimensioned industrial truck to the installation site.

General risks during internal transport



CAUTION: DANGER OF TIPPING!

The device may be lifted unsecured by a maximum of 2cm.
Employees must be outside the danger zone, the reach of loads. Warn employees and, if necessary, advise employees of the hazard.

Devices may only be transported by authorized and qualified persons. Act responsibly during transport and always consider the consequences. Refrain from daring and risky actions.

Gradients and descents (e.g. driveways, ramps and the like) are particularly dangerous. If such passages are unavoidable, special caution is required.

Before starting the transport check the transport route for possible danger points, unevenness and disturbances as well as for sufficient strength and load capacity.

Danger points, unevenness and disturbance points must be inspected before transport. The removal of danger spots, disturbances and unevenness at the time of transport by other employees leads to considerable dangers.

Careful planning of internal transport is therefore essential.

6.2 Packaging

All packaging materials and packaging aids used in the ambient air filtering system are recyclable and must always be recycled. Packing components made of cardboard are shredded for waste paper collection.

The foils are made of polyethylene (PE) and the upholstery parts made of polystyrene (PS). You can hand over these substances to a recycling center or to the disposal company responsible for you.

6.3 Storage

The device must be cleaned thoroughly before storing it in a dry, clean, dust- and frost-free environment. It must not be placed in a room with chemicals.

7 Assembly



ATTENTION!

Please remove the machine from the packaging and remove all protective foils. Ensure that the machine is not set up or operated in a damp or wet environment. The air humidity should not exceed 60% and the measured room temperature should be between max. 0°C and 40°C.

7.1 Installation

Step 1: Place the air filter system on the floor with the bottom of the housing facing upwards as shown in Fig.4.

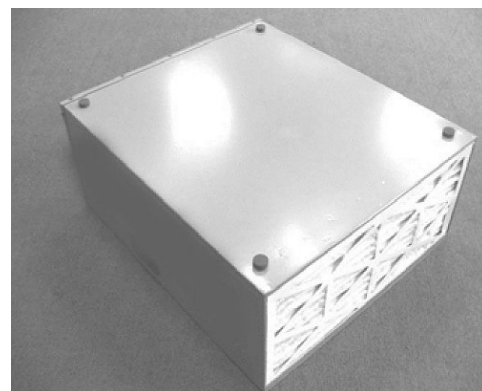


Fig. 4: Mounting the rubber foot

Step 2: Mount the rubber feet on the bottom side of the air filter system. These help to dampen or prevent vibrations from being felt.

7.2 Ceiling installation

7.2.1 LFS 101-3

Step 1: Find a desired ceiling position where the air filter system can be installed.

Step 2: Insert the 4 ring eyelets on the left and right top side of the air filter system.



Fig. 5: Assembly of the eyelets

Step 3: Lift the device to the desired position using tools or lifting devices (not included).

Step 4: Align the four eyebolts on the ceiling and fasten them.

Step 5: Attach the device to the ceiling using the ring chains and hooks.



NOTE!

The eyebolts must be sufficiently strong to support the weight of the air filter system. When mounting the device, make sure that each eyebolt fits completely into the eyelet to ensure secure mounting of the air filter system.

7.2.2 LFS 301-3

Step 1: Find a desired ceiling position where the air filter system can be installed.

Step 2: Insert the 4 ring eyelets with the connecting plate on the left and right upper side of the air filter system.

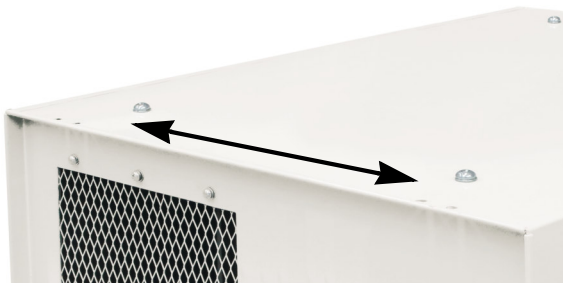


Fig. 6: Assembly of the eyebolts LFS 301-3

Step 3: Lift the device to the desired position using tools or lifting devices (not included).

Step 4: Align the four eyebolts on the ceiling and fasten them.

Step 5: Hang the device from the eyebolts.

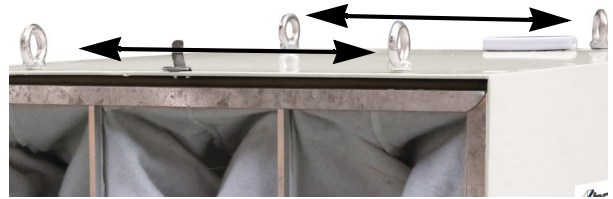


Fig. 7: Hanging the air filter system



NOTE!

The eyebolts must be sufficiently strong to support the weight of the air filter system. When mounting the device, make sure that each eyebolt fits completely into the eyelet to ensure secure mounting of the air filter system.

8 Commissioning



ATTENTION!

Before starting, using, servicing or otherwise intervening on the machine, read the instructions for use and maintenance carefully. Handling and working with the machine is only permitted for persons who are well acquainted with the handling and operation of the machine.

The air filter system is equipped with a remote control for time recording for automatic switch-off. The remote control sends / receives signals from the LED sensor on the front of the machine. (Fig.8). This remote control requires two AAA batteries which are not included in the delivery. The battery case is located on the bottom of the remote control. To start the air filtration system for air filtration, press the ON button on the remote control. To stop air filtration, press the OFF button on the remote control.



Fig. 8: Remote control of the air filter system

8.1 Air inlet and air outlet during the filtering process

During the filtering process, the unclean air is vacuumed through the filter bags (rear machine area), filtered and finally released as clean air at the front machine area (with the control panel).

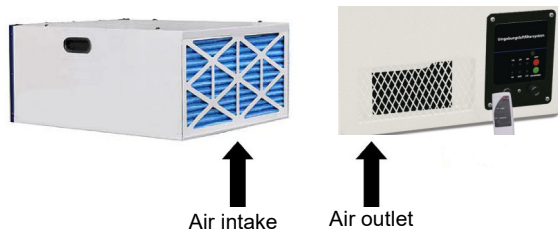


Fig. 9: Air intake and air outlet

9 Operation



DANGER!

Danger to life through electric shock!

Contact with live components can result in danger to life. Switched-on electrical components can execute uncontrolled movements and cause serious injuries.

- Disconnect the air filter system from the mains before starting adjustments..

The air filter system has 3 different speeds (Hi,MID and LO) which can be adjusted. The speed can be changed by pressing the button. Press the "ON/SPEED" button once for high power, twice for medium and three times for low power. The corresponding LED will light up to indicate the speed of the unit.

The air filter system is equipped with a time recording function for automatic switch-off. Press the "Timer" button once for 1 hour auto power off, twice for 2 hours auto power off or three times for 4 hours auto power off.



NOTE!

The fuse is located on the control panel (Figure 10). If the fuse blows, unscrew the fuse cover, remove and replace the fuse.

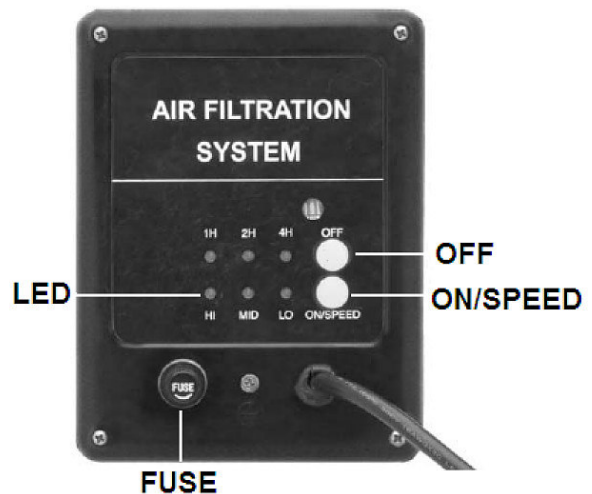


Fig. 10: Control panel

9.1 Switch on

Step 1: Make sure that the filter is placed correctly (Fig.11). The back of the filter must not be clogged.

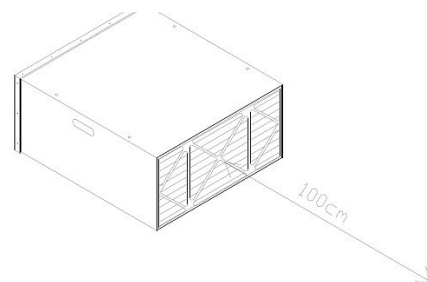


Fig. 11: Positioning of the filter

Step 2: Connect the power plug to the power supply.

Step 3: Press the ON button. The motor starts and the LED STEP lights up according to the set speed level. The speed levels are changed by pressing the ON/SPEED button.

Step 4: Press the Timer button to set the operating time. Each further press of the button advances the operating time.

9.2 Switch off

Step 1: To turn off the device, press the OFF button on the remote control.

10 Care, maintenance and servicing/repair



DANGER!

Danger to life through electric shock!

Contact with live components can cause danger to life. Switched-on electrical components can execute uncontrolled movements and cause serious injuries.

- Disconnect the mains plug before starting cleaning and maintenance work.



ATTENTION!

- Never use solvents to clean plastic parts or painted surfaces. Dissolving of the surface and consequential damage can occur.

10.1 Care after end of work

The air filter system must always be kept in a clean condition.



Use protective gloves!



NOTE!

Never use strong cleaning agents for any cleaning work. This can lead to damage or destruction of the device.

Step 1: Unplug the power cord from the socket.

Step 2: Sweep or wipe all open machine parts with a broom or cloth at regular intervals.

Step 3: All painted surfaces should be cleaned with a soft, damp cloth.

Step 4: Treat bare metal work surfaces with anti-rust spray.

Step 5: Check all screw connections and moving parts for tightness.

10.2 Filter replacement



Wear respiratory protection!

Step 1: Disconnect the device from the power source.

Step 2: To begin filter change/replacement, remove the filter grid by loosening the clamps on the back of the device (Fig. 12).



Fig. 12: Filter replacement

Step 3: Pull the inner filter out of the machine (Fig. 13).



Fig. 13: Filter replacement

Step 4: The filter grid with the filter pad can be cleaned and reinstalled. The filter bags, however, must be replaced.

Step 5: Make sure that you have inserted the new filter bags correctly (in the direction of the arrow).

Step 6: Reinsert the inner filter and then the filter grid and close it with the metal clips on the back of the device.



ATTENTION!

The air filter system must never be started or put into operation without filter elements.

10.3 Service and maintenance

Maintenance and repair work may only be carried out by qualified personnel.

If the air filter system does not function properly, contact a specialist dealer or our customer service department. The contact details can be found in chapter 1.2 Customer Service.

All protective and safety devices must be reinstalled immediately after repair and maintenance work is completed.

11 Disposal, recycling of old equipment

Please dispose of your device in an environmentally friendly manner by disposing of waste not in the environment but in a professional manner. Please do not simply throw away the packaging and later the disused device, but dispose of them according to the guidelines set up by your local authority or by the responsible disposal company.

11.1 Decommission

Disused equipment must be taken out of service immediately in order to avoid later misuse and endangering the environment or people.

Step 1: Remove all environmentally hazardous fluids from the old unit.

Step 2: If necessary, dismantle the machine into manageable and usable assemblies and components.

Step 3: Guide the machine components and operating materials to the appropriate disposal routes.

11.2 Disposal of electrical equipment

Electrical equipment contains a large number of recyclable materials and environmentally harmful components.

These components must be disposed of separately and properly. In case of doubt, contact the municipal waste disposal service.

If necessary, use the services of a specialized waste disposal company for processing.

11.3 Disposal via municipal collection points

Disposal of used electrical and electronic equipment (to be used in the countries of the European Union and other European countries with a separate collection system for this equipment).



The symbol on the product or its packaging indicates that this product is not to be treated as normal household waste, but must be returned to a collection point for the recycling of electrical and electronic equipment. By contributing to the correct disposal of this product, you protect the environment and the health of your fellow human beings. Environment and health are endangered by incorrect disposal. Material recycling helps to reduce the consumption of raw materials. For more information about recycling this product, contact your local community, municipal waste management company or the store where you purchased the product

12 Troubleshooting

Malfunction	Possible cause	Solution
Motor does not run when the power switch is on.	1. Blown fuse. 2. Switch is blown. 3. Connection wire is loose or damaged.	1. Replace the fuse. 2. Replace the switch. 3. Tighten the wire or replace it.
Motor will not run at full power.	1. The mains voltage is too low. 2. Motor is damaged.	1. Check mains voltage. 2. Check and repair the motor.
Motor does not reach full power	1. Incorrect motor wiring. 2. Motor overload due to possibly dirty filters.	1. Replace the wrong motor wiring. 2. Reduce the load by cleaning the filters if necessary.
Motor is overheating.	1. Wrong voltage used. 2. Motor is damaged.	1. Check voltage. 2. Check and repair the motor.
Insufficient suction power.	1. Inlet port blocked. 2. Filter bag is full. 3. Outlet port blocked.	1. Clean the inlet opening. 2. Empty the filter bag. 3. Clean the outlet opening or adjust the direction of the outlet.
The air filter system vibrates heavily	1. The air filter system is not or not correctly anchored. 2. The power cable is worn or damaged. 3. Eyebolts or eyes have become loose.	1. Secure the air filter system. 2. Repair or replace the power cable. 3. Tighten the eye bolts or eyelets.

13 Spare parts



DANGER!

Risk of injury by using wrong spare parts!

The use of incorrect or faulty replacement parts may cause danger to the operator and cause damage and malfunction.

- Only use original spare parts from the manufacturer or replacement parts approved by the manufacturer.
- In case of doubt, always contact the manufacturer..



Loss of warranty

Using non-approved spare parts voids the manufacturer's warranty.

13.1 Ordering spare parts

The spare parts can be obtained from the dealer.

Specify the following key data for inquiries or ordering spare parts:

- Device type
- Serial number
- Amount
- Designation
- Desired shipping method (post, freight, sea, air, express)
- Delivery address

Spare parts orders without above given information can not be considered. If the shipping method is missing, shipping will be at the discretion of the supplier.

Information on the device type, article number and year of manufacture can be found on the type plate, which is attached to the device.

Example

The motor for the Ambient Air Filtering System LFS 101-3 must be ordered. The motor has the position number 17 in the spare parts drawing 1.

When ordering spare parts, send a copy of the spare parts drawing (1) with marked component (engine) and marked position number (17) to the authorized dealer or to the spare parts department and provide the following information

- Type of device: **LFS 101-3**
- Item number: **5127101**
- Drawing number: **1**
- Position number: **17**

13.2 Spare parts drawings

The following spare part drawing should help in case of service to identify necessary spare parts. To order, send a copy of the parts drawing with the parts marked to your authorized dealer.

13.2.1 Spare parts drawing LFS 101-3

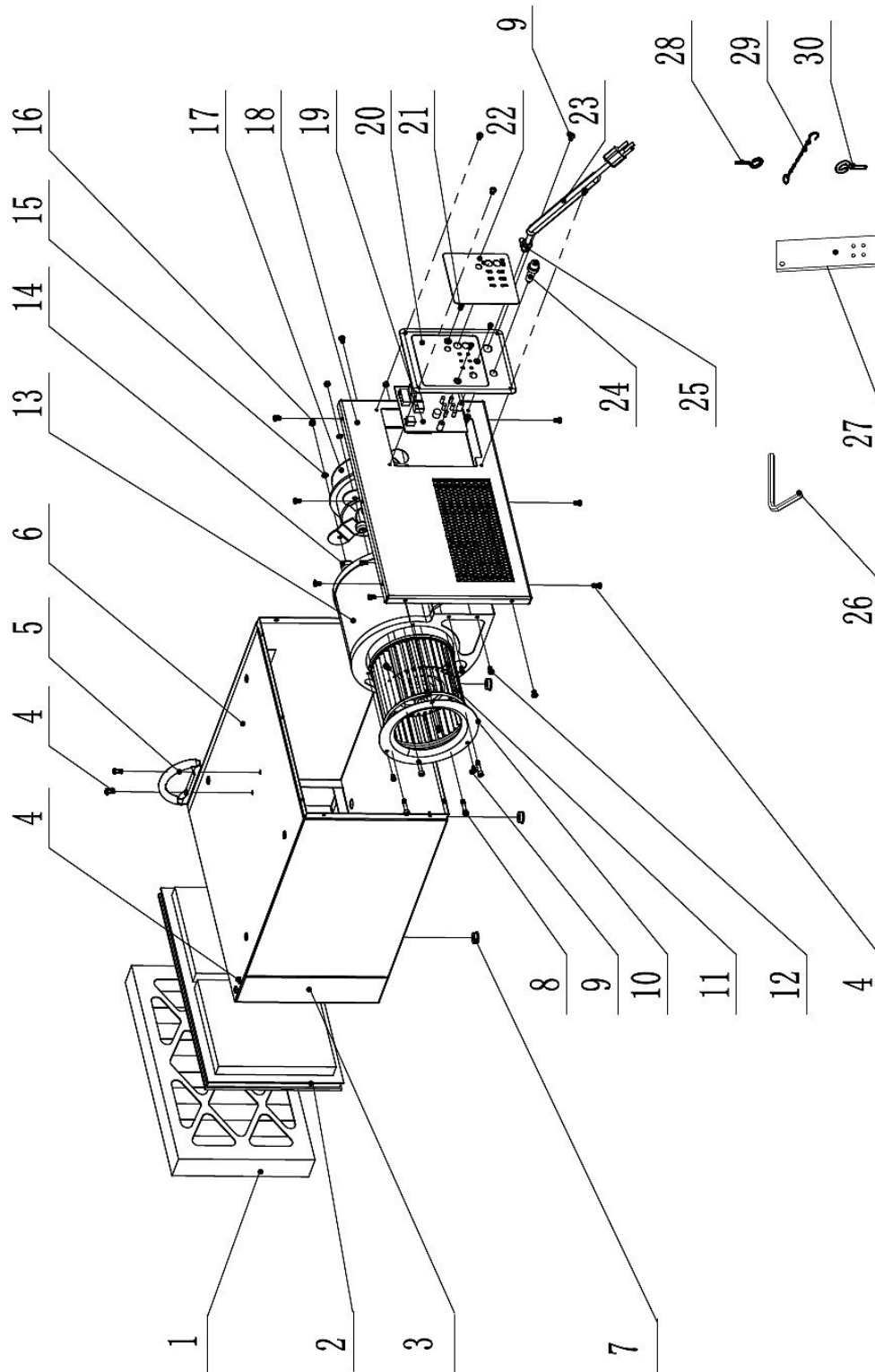


Fig. 14: Spare parts drawing LFS 101-3

13.2.2 Spare parts drawing LFS 301-3

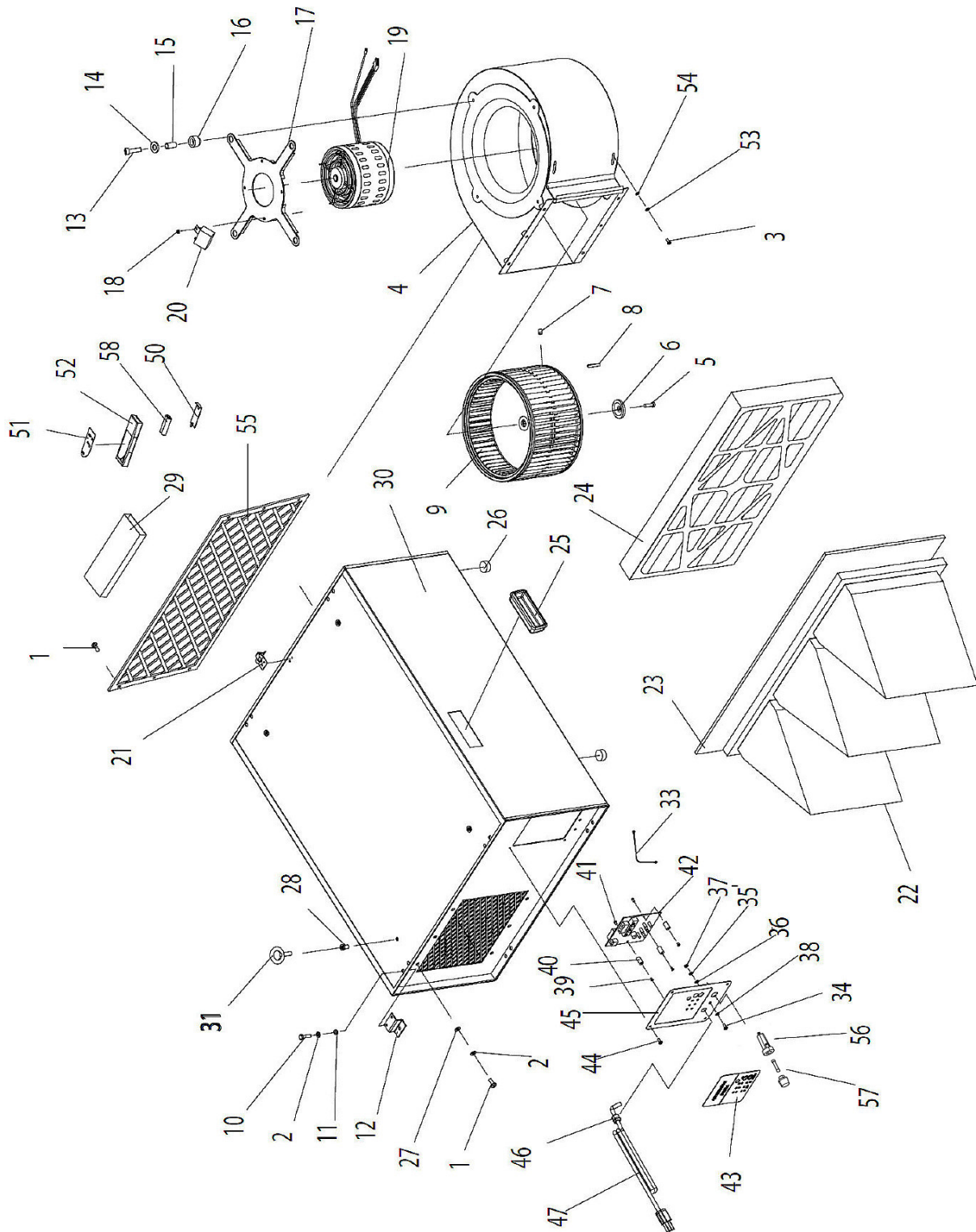


Fig. 15: Spare parts drawing LFS 301-3

14 Electrical circuit diagrams

14.1 Electrical circuit diagram LFS 101-3

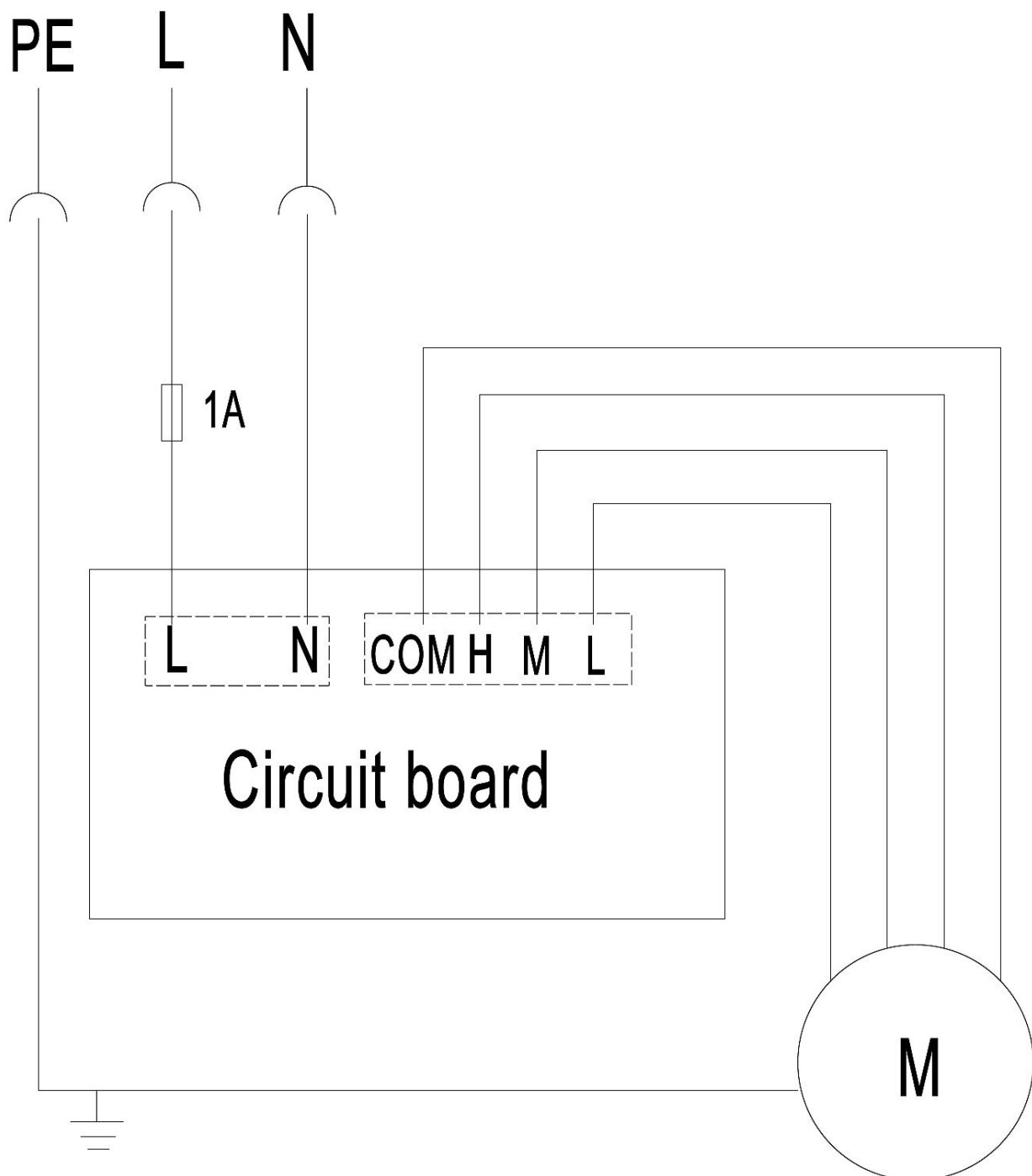


Fig. 16: Electrical circuit diagram LFS 101-3

14.2 Electrical circuit diagram LFS 301-3

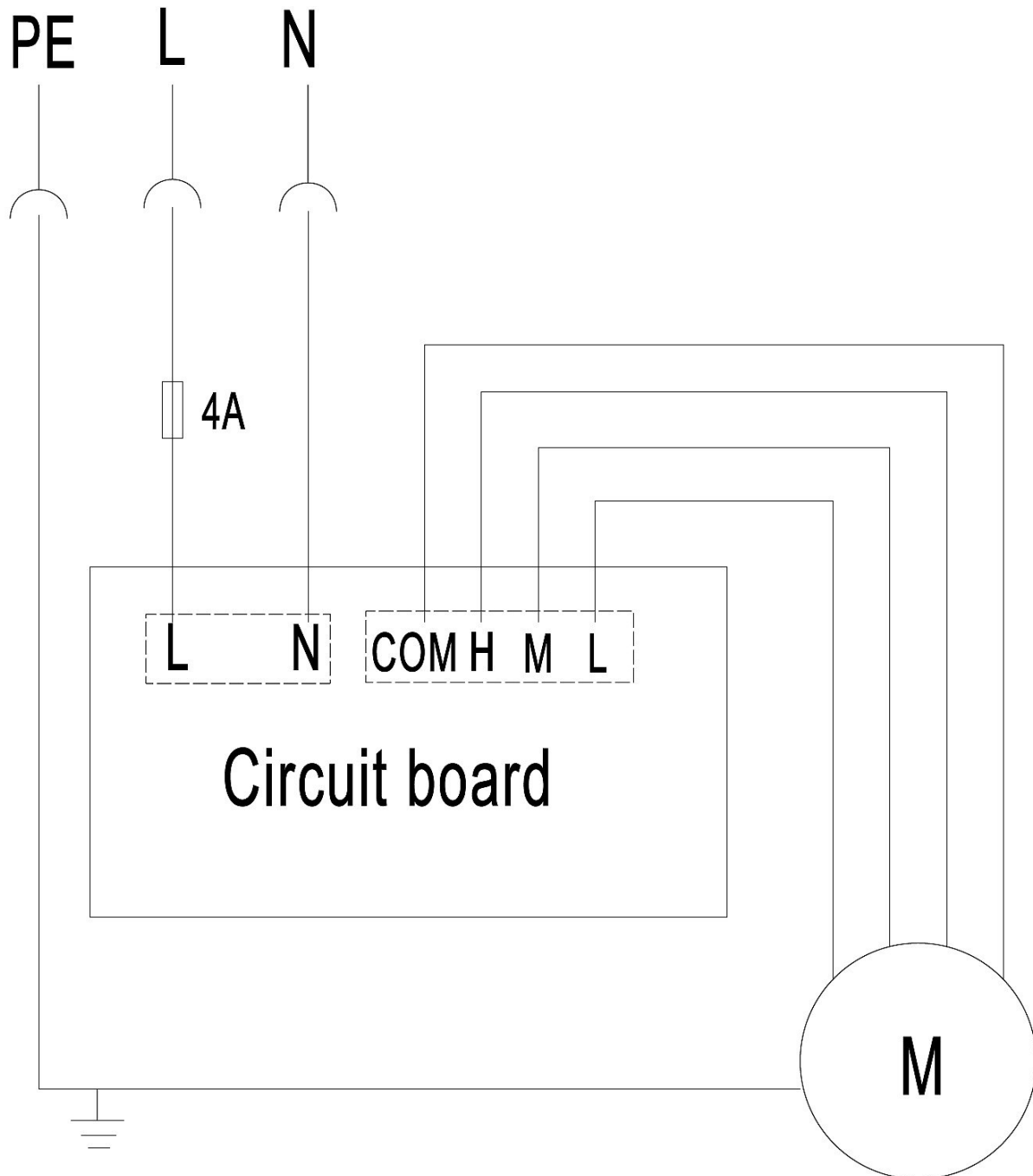


Fig. 17: Electrical circuit diagram LFS 301-3

15 EC - Declaration of Conformity

According to Machinery Directive 2006/42 / EC Annex II 1.A

Manufacturer / distributor: Stürmer Maschinen GmbH
Dr.-Robert-Pfleger-Str. 26
D-96103 Hallstadt

hereby declares that the following product

Product group: Holzkraft® Woodworking machines

Machine type: Ambient Air Filtering System

Designation of the machine: ☐ LFS 101-3 **Item number*:** ☐ 5127101
☐ LFS 301-3 ☐ 5127301

Serial number*: _____

Year of manufacture*: 20____

* please fill in according to the information on the type plate


due to its design and construction, as well as in the version we have placed on the market, it complies with the relevant basic health and safety requirements of the above-mentioned directive and the following EU directives.

Relevant EU directives: 2014/30/EU EMC Directive
2012/19/EU WEEE Directive

The following harmonized standards have been applied:

DIN EN 60335-1:2020-08	Household and similar electrical appliances - Safety - Part 1: General requirements
DIN EN 60335-2-65:2013-02	Household and similar electrical appliances - Safety - Part 2-65: Particular requirements for air-cleaning appliances
DIN EN 62233:2008-11	Measurement methods for electromagnetic fields of household appliances and similar apparatus with regard to human exposure
DIN EN 55014-1:2018-08	Electromagnetic compatibility - Requirements for household appliances, electric tools and similar apparatus - Part 1: Emission
DIN EN 55014-2:2016-01	Electromagnetic compatibility - Requirements for household appliances, electric tools and similar apparatus - Part 2: Immunity - Product family standard
DIN EN IEC 61000-3-2:2019-12	Electromagnetic compatibility (EMC) - Part 3-2: Limits – Limits for harmonic current emissions (equipment input current ≤ 16 A per phase)
DIN EN 61000-3-3:2020-07	Electromagnetic compatibility (EMC) - Part 3-3: Limits - Limitation of voltage changes, voltage fluctuations and flicker in public low-voltage supply systems, for equipment with rated current ≤ 16 A per phase and not subject to conditional connection

Responsible for documentation: Kilian Stürmer, Stürmer Maschinen GmbH,
Dr.-Robert-Pfleger-Str. 26, D-96103 Hallstadt
Hallstadt, 09.05.2022



Kilian Stürmer
Managing Director



