

Operating Instructions

— Log Splitter

— HSE 8-550



HSE 8-550

HSE 8-550

Imprint

Product identification

Log Splitter	Item number
HSE 8-550 230 V	5981008
HSE 8-550 400 V	5981009

Manufacturer

Stürmer Maschinen GmbH
Dr.-Robert-Pfleger-Str. 26
D-96103 Hallstadt

Fax: 0049 (0) 951 96555-55
E-Mail: info@holzkraft.de
Internet: www.holzkraft.de

Information about the operating instructions

Genuine operating instructions
according to DIN EN ISO 20607:2019

Published: 04.08.2021
Version: 1.07
Language: English

Author: KP/FL

Copyright information

Copyright © 2021 Stürmer Maschinen GmbH, Hallstadt, Germany.

Subject to technical modifications and changes.

Content

1 Introduction	3
1.1 Copyright	3
1.2 Customer service	3
1.3 Disclaimer	3
2 Safety	3
2.1 Legend of Symbols	3
2.2 General safety instructions	4
2.3 Safety marking on the machine	5
2.4 Personal protective equipment	5
2.5 Safety data sheets	6
3 Intended Use	6
3.1 Reasonably foreseeable misuse	6
3.2 Residual risks	6
4 Technical Data	6
4.1 Type plate	7
5 Transport, packaging, storage	7
5.1 Delivery and transport	7
5.2 Packaging	8
5.3 Storage	8
6 Assembly and settings	8
6.1 Description of device	8
7 Accessories	8
8 Assembly	9
8.1 Assembly the log splitter	9
8.2 Setting up the log splitter	11
8.3 Electrical connection	11
8.4 Setting the wedge stroke	11
8.5 Adjusting the log holders	12
9 Working with the log splitter	12
9.1 Functional testing	13
9.2 Operation	13
9.3 Finish of the operating	14
10 Care, maintenance and repairs	14
10.1 Care by cleaning	14
10.2 Maintenance and repair	14
10.2.1 Split wedge	14
10.2.2 Two-hand safety guard	15
10.2.3 Hydraulic system	15
10.2.4 Fill up with oil	15
10.2.5 Oil level gauge	15
11 Troubleshooting	16
12 Disposal, reusing used machines	16
12.1 Decommissioning	16
12.2 Disposal of electrical equipment	16
12.3 Disposing of lubricants	16
12.4 Disposal via municipal collection points	17
13 Spare parts	17
13.1 Spare parts orders	17
13.2 Spare parts drawing HSE 8-550	18
14 Electrical circuit diagrams	19
15 Hydraulic circuit diagram	20
16 EC Declaration of Conformity	21

1 Introduction

You have made an excellent choice in purchasing a HOLZKRAFT log splitter.

Carefully read the operating instructions prior to commissioning.

They describe correct commissioning, intended use and safe as well as efficient operation and maintenance of your log splitter.

The operating instructions form part of the log splitter. Keep these operating instructions at the installation location of your log splitter. Also observe the local accident prevention regulations and general safety regulations for the use of the log splitter.

1.1 Copyright

The contents of these instructions are protected by copyright and are the sole property of Stürmer Maschinen GmbH. Their use is permitted within the scope of the use of the log splitter. Any other use is not permitted without the written consent of the manufacturer.

Passing on as well as duplication of this document, utilization and communication of its contents are forbidden, as far as not expressly permitted. Violations will result in liability for damages. We register trademark, patent and design rights to protect our products, insofar as this is possible in individual cases. We emphatically oppose any infringement of our intellectual property.

1.2 Customer service

Please contact your specialist retailer if you have any questions regarding your log splitter or require any technical information. Your specialist retailer will be happy to support you with specialist advice and information.

Germany:

Stürmer Maschinen GmbH
Dr.-Robert-Pfleger-Str. 26
D-96103 Hallstadt
Germany

Repair service:

Fax: 0049 (0) 951 96555-111
Email: service@stuermer-maschinen.de

Spare parts orders:

Fax: 0049 (0) 951 96555-119
Email: ersatzteile@stuermer-maschinen.de

We are always interested in valuable experience and knowledge gained from using the application, which then could be shared and be valuable to develop our products even further.

1.3 Disclaimer

All data in these operating instructions has been compiled on the basis of the state-of-the-art, valid standards and guidelines as well as our many years of expertise and experience.

The manufacturer shall not be liable for damage in the following cases:

- Non-observance of these operating instructions
- Unintended use
- Use of personnel who are not knowledgeable and skilled in the field
- Conversions at one's own responsibility
- Technical modifications
- Use of unauthorised spare parts

The actual scope of delivery may deviate from the descriptions and illustrations in this document as a result of special variants, optional extras or recent, technical modifications.

The obligations defined in the supply contract shall apply in addition to the general terms and conditions and the manufacturer's general terms and conditions as well as the statutory regulations valid at the time of the conclusion of the contract.

2 Safety

This section provides an overview of all important safety packages for personal protection as well as safe and reliable operation. The sections on individual service life phases contain additional, specifically applicable safety information.

2.1 Legend of Symbols

Safety Instructions

Safety instructions in these operating instructions have been highlighted with symbols. Safety instructions are indicated by signal terms that express the degree of risk involved.



DANGER!

This combination of symbol and signal term indicates a directly dangerous situation which may cause death or serious injury if not averted.

WARNING!

This combination of symbol and signal term indicates potentially hazardous situations which may cause death or serious injury if not averted.

ATTENTION!

This combination of symbol and signal term indicates a potentially hazardous situation which may cause minor or light injuries if it is not averted.

CAUTION!

This combination of symbol and signal term indicates a potentially dangerous situation which may cause material damage or harm the environment if it is not averted.



NOTE!

This combination of symbol and signal term indicates a potentially dangerous situation which may cause material damage or harm the environment if it is not averted.

Tips and recommendations



Tips and recommendations

This symbol highlights useful tips and recommendations as well as information for efficient and reliable operation.

Observe the safety information in these operating instructions to minimise the risk of personal injury as well as material damage and prevent hazardous situations.

2.2 General safety instructions

Please note the following:

- Do not operate the log splitter under the influence of drugs, alcohol or other medicines that could affect your ability to use it properly.
- The machine must not be operated by children.
- Ensure that children are under constant supervision and do not play with the machine.
- Keep your work area clean and well lit.

- Do not use the log splitter in damp or wet rooms and do not expose it to rain.
- Do not use the unit in areas where vapours of paint, solvents or flammable liquids are a potential hazard.
- Check the log splitter before you switch it on. Make sure that the tool and adjustment key have been removed from the tool area before switching on.
- Replace damaged, missing or defective parts before use.
- Do not wear loose clothing, ties or jewellery (e.g. rings, wristwatches) They can get caught in moving parts of the log splitter.
- Wear a protective hair cover to cover long hair so that it cannot get caught in the log splitter while working.
- Always wear safety glasses when working with the log splitter.
- Always keep the correct position and balance when working with the log splitter.
- Make sure you wear safe shoes and a non-slip surface.
- Never touch the splitting wedge. Serious injuries can occur if the work piece is tilted or if the cutting tools are touched unintentionally.
- Never disassemble safety devices on the wood splitter.
- Do not use the log splitter if it cannot be switched on and off properly.
- Avoid an uncomfortable working position, where the operator has to work close to the machine and thus runs the risk of being hit by wood chips or debris in the face.
- Ensure that the electric circuit is adequately protected and that it corresponds to the power, voltage and frequency of the motor.
- Improper use of extension cables can lead to inefficient operation of the log splitter, which can cause overheating. Ensure that the extension cable is not longer than 10 m and its cross-section is not less than 2.5 mm² to allow sufficient current flow to the motor.
- Avoid using free and insufficiently insulated connections. Connections must be made with protected material suitable for outdoor use.
- The log splitter may only be operated by one person at a time. Other persons should keep a safe distance from the working area, especially as soon as the log splitter is in operation.
- Make sure that there are no nails or foreign objects in the wood pieces to be split. The ends of the logs must be cut square. Branches must be cut flush with the log.

- Do not remove jammed logs with your hands. Always switch off the log splitter beforehand and disconnect it from the mains.
- Always pay attention to the movement of the mobile splitting wedge. Do not load anything into the log splitter until the splitting wedge has stopped.
- Keep your hands away from all moving parts.
- Have a fire extinguisher and a first aid kit ready if necessary.
- Never try to split logs larger than those specified in the specification table. This could be dangerous and damage the machine.
- Do not use the log splitter for a purpose for which it was not intended.
- Avoid unintentional operation. Always disconnect the mains plug when transporting the machine. Make sure that the switch is switched off when plugging into the socket.
- Do not use the machine on fire or
- Potentially explosive atmospheres.
- Never leave the log splitter unattended. Always switch off the log splitter as soon as you leave the working area.
- Always disconnect the log splitter from the power supply when making adjustments, cleaning or repairing parts.
- Only use original spare parts.

2.3 Safety marking on the machine

The following safety labels are attached to the machine (Fig. 1), which must be observed and followed.



Fig. 1: Safety signs

The safety markings on the machine must not be removed. Damaged or missing safety markings can lead to malfunctions, personal injury and property damage. They are to be replaced immediately. If the safety markings are not immediately recognizable and comprehensible, the machine must be taken out of service until new safety markings have been made.

2.4 Personal protective equipment

Personal protective equipment is intended to protect the health and safety of persons at work. Staff must wear the personal protective equipment indicated in individual sections of these operating instructions when carrying out the different tasks on the machine.

The personal protective equipment is described in the following section:



Hearing protection

Hearing protection protects against hearing damage caused by noise.



Protective clothing

The protective clothing is tight-fitting clothing with low tear resistance.



Head protection

The industrial helmet protects the head against falling objects and bumping into stationary objects.



Protective eyewear

Protective goggles are intended to protect the eyes from flying parts.



Suitable protective gloves

Protective gloves are intended to protect the hands from components with sharp objects as well as friction, abrasion, and deep-cut injuries.



Safety boots

Safety shoes protect feet from pinching, falling parts and slipping on slippery surfaces.

2.5 Safety data sheets

Safety data sheets on hazardous materials can be obtained from your specialist dealer or by calling +49 (0)951/96555-0. Specialist dealers can find safety data sheets in the download area of the partner portal.

3 Intended Use

The Log splitter is used exclusively for splitting standing wood in grain direction. It is only intended for standing operation and may only be operated by one person. The dimensions of the wood to be split must not exceed the table size. Intended use also includes compliance with all information in these instructions. Any use exceeding the intended use or any other use is considered misuse.

Stürmer Maschinen GmbH assumes no liability for constructive and technical changes to the log splitter. Claims of any kind due to damage due to improper use are excluded.

3.1 Reasonably foreseeable misuse

Any use beyond the intended use or any other use is considered misuse.

- Deliberate or careless handling of the log stacker during operation.
- Service work by untrained or unauthorized personnel.
- Use of the log splitter for materials other than wood.
- Modifications to the log splitter or the use of modified accessories.
- Installation of spare parts or use of accessories which are not approved by the manufacturer.
- Operating the log splitter even though the operating instructions are incomplete.
- Failure to observe the maintenance instructions.
- Failure to observe the signs of wear and damage.
- Bypassing or altering the safety devices.
- Operating the log splitter without the safety devices in place.

Misuse of the log splitter can lead to dangerous situations.

Stürmer Maschinen GmbH accepts no liability for design and technical modifications to the log splitter.

Claims of any kind for damage due to improper use are excluded.

3.2 Residual risks

Even if all safety regulations are observed and the machine is used in accordance with the regulations, there are still residual risks, which are listed below:

- There is a risk of injury to the upper limbs (e.g. hands, fingers).
- Heat generation on components can cause burns and other injuries.
- Electrical hazard due to contact with parts and high voltage (direct contact) or with parts that are under a high voltage due to a defect of the device (indirect contact).

4 Technical Data

Model	230 V	400 V
Splitting length max.	550 mm	
Max. split material diameter	300 mm	
Max. cylinder stroke	485 mm	
Max. splitting force	8 t	
Forward speed	30,6 mm/s	60,6 mm/s
Return speed	170,8 mm/s	194 mm/s
Splitting force	8 t	
Electrical connection/ power frequency	230 V / 50 Hz	400 V / 50 Hz
Rated power drive motor	3,0 kW	3,5 kW
Power output motor	2,2 kW	2,5 kW
Oil tank capacity	4 l	4 l
Operating pressure max.	21 MPa	
Degree of protection	IP 54	IP 54
Nominal operating mode drive motor	S6	S6
Duty cycle drive motor	40%	40%
Dimensions LxWxH	845x935x1500 mm	
Sound pressure level	≤ 89,7 dBA	
Weight	110 kg	109 kg

4.1 Type plate

Holzspalter Log splitter		  	
Typ Type	HSE 8-550	Serien-Nr. Serial no.	
Artikel-Nr. Item no.	5981009	Baujahr Year of manufacture	
Motorleistung Motor power	3,5 kW	Netzanschluss Power connection	400 V / 3~ / 50 Hz
Betriebsart Operating mode	S6 40%	Schutzart Degree of protection	IP 54
Spalkkraft Splitting force	8 t	Gewicht Weight	109 kg
Betriebsdruck Pressure	21,0 MPa max	Schalldruckpegel Sound pressure level	< 90 dB(A)
Spaltgutmaße Log dimensions	100 – 550 mm / Ø 80 – 300 mm (min – max)		
 holzkraft www.holzkraft.de		Stürmer Maschinen GmbH Dr.-Robert-Pfleger-Str. 26, 96103 Hallstadt Deutschland / Germany	

Fig. 2: Type plate HSE 8-550 - 400V

5 Transport, packaging, storage

5.1 Delivery and transport

Delivery

Check the log splitter on delivery for any visible transportation damage. If you notice any damage to the device please report this immediately to the carrier or dealer.

Transport

Improper transport is accident-prone and can cause damage or malfunctions for which we do not grant any liability or guarantee. Transport the scope of delivery secured against shifting or tilting with a sufficiently dimensioned industrial truck to the installation site.



WARNING!

Severe or fatal injuries may occur if parts of the machine tumble or fall down from the forklift truck, pallet truck or from the transport vehicle. Follow the instructions and information on the transport box. Note the total weight of the machine. The weight of the machine is indicated in the "Technical data" of the machine. When the machine is unpacked, the weight of the machine can also be read on the rating plate. Only use transport devices and load suspension gear that can hold the total weight of the machine.



WARNING!

The use of unstable lifting and load suspension equipment that might break under load can cause severe injuries or even death. Check that the lifting and load suspension gear has sufficient load-bearing capacity and that it is in perfect condition. Observe the accident prevention regulations issued by your Employers Liability Insurance Association or other competent supervisory authority, responsible for your company. Fasten the loads properly.

General risks during internal transport



WARNING: DANGER OF TIPPING

The device may be lifted unsecured by a maximum of 2cm. Employees must be outside the danger zone, the reach of loads. Warn employees and, if necessary, advise employees of the hazard.

Devices may only be transported by authorized and qualified persons. Act responsibly during transport and always consider the consequences. Refrain from daring and risky actions.

Gradients and descents (e.g. driveways, ramps and the like) are particularly dangerous. If such passages are unavoidable, special caution is required.

Before starting the transport check the transport route for possible danger points, unevenness and disturbances as well as for sufficient strength and load capacity.

Danger points, unevenness and disturbance points must be inspected before transport. The removal of danger spots, disturbances and unevenness at the time of transport by other employees leads to considerable dangers.

Careful planning of internal transport is therefore essential.



NOTE!

Oil can leak during transport. Secure the unit accordingly and take precautions against possible environmental pollution.

The log splitter may only be transported standing up and with the engine switched off. To prevent the hydraulic oil from leaking, never transport the log splitter in a horizontal position.

The log splitter is equipped with 2 wheels for smaller movements. To move the log splitter to the workplace, grasp the splitter by the handle (1) after making sure that the oil tank cover is tightened..



ATTENTION

During transport, the split wedge must always be lowered completely.

Transport and storage temperature: -25°C to +55°C.

Transport with a forklift truck/lift truck:

For shipping, the log splitter is securely mounted on a pallet so that it can be transported with a forklift truck.

Transport with a crane:

For transport with a crane, attach the carrying ropes to the housing of the log splitter (see Fig. 3). Never lift the log splitter by the handle.

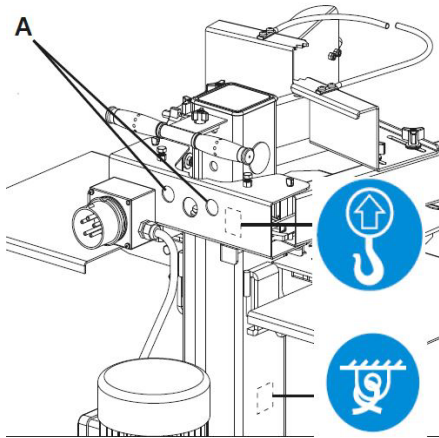


Fig. 3: Transport facilities

5.2 Packaging

All of the machine's packaging materials and packing aids are suitable for recycling and must always be disposed of using material-based recycling systems.

Packaging materials made of cardboard must be shredded and disposed of as part of waste paper recycling.

The foils are made of polyethylene (PE), padding is made of polystyrene (PS). Dispose of these substances at a recycling centre or hand them over to the relevant waste disposal company.

5.3 Storage

Store the log splitter thoroughly cleaned in a dry, clean and frost-free environment.

6 Assembly and settings

6.1 Description of device

Illustrations in these operating instructions may deviate from the original.

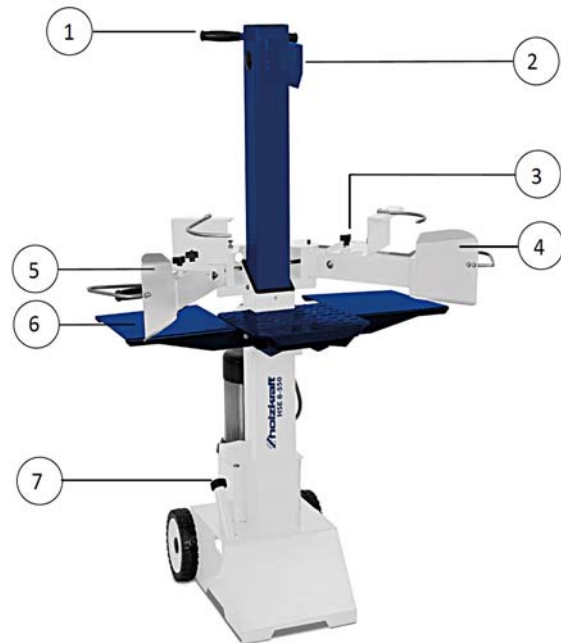


Fig. 4: Log Splitter HSE 8-550

- 1 Handle
- 2 Split wedge
- 3 Adjusting knob for log holder
- 4 Control lever
- 5 Switch / mains connection
- 6 Support table
- 7 Oil tank cover / Air bleeder

7 Accessories

The following accessories are available for the log splitter HSE 8-550:

- Angle stop, adjustable +/- 45°
Item number: 5330040

8 Assembly

8.1 Assembly the log splitter

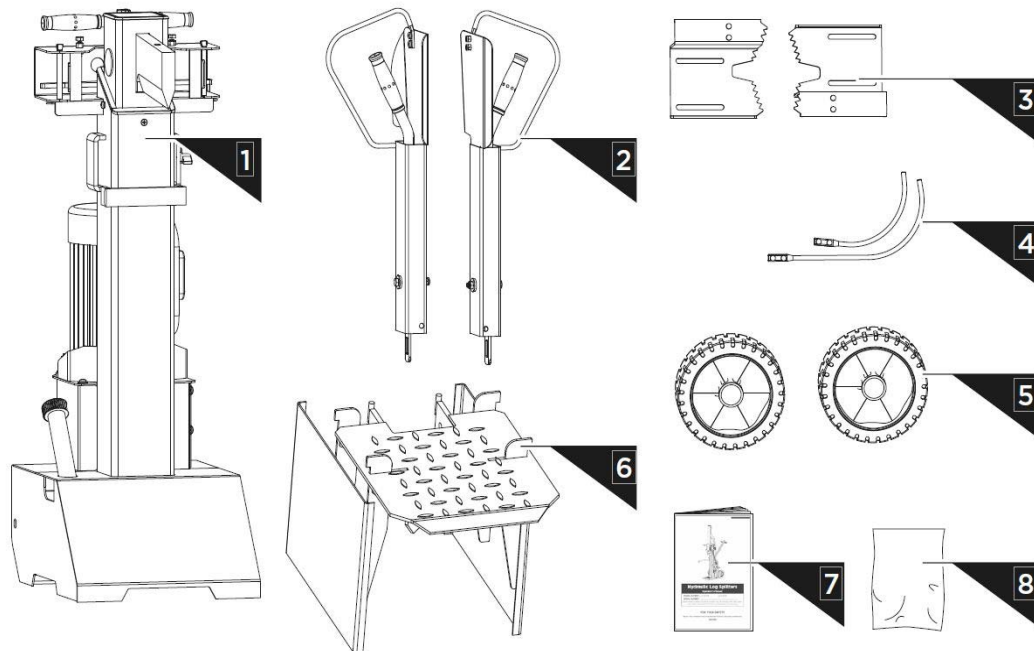


Fig. 5: Parts of the log splitter

Mounting the wheels

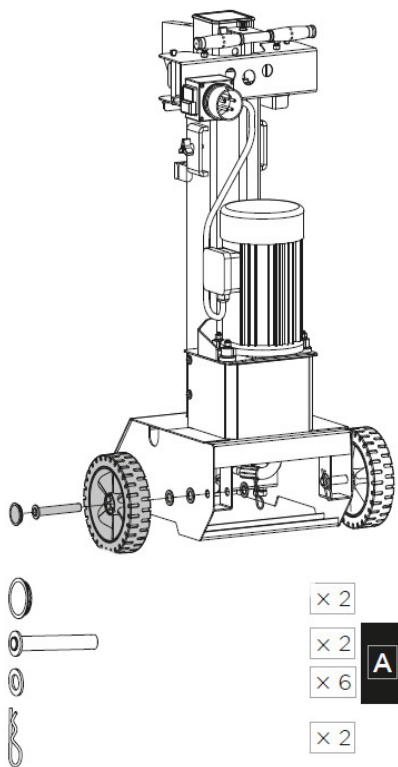


Fig. 6: Mounting the wheels

Step 1: Pass the axle through the wheel from outside and put on two washers as shown in the figure 6.

Step 2: Slide the axle into the two holes on the base of log splitter and secure it with another washer and R-pin from inside.

Step 3: Put on the wheel cap.

Mounting table/support table

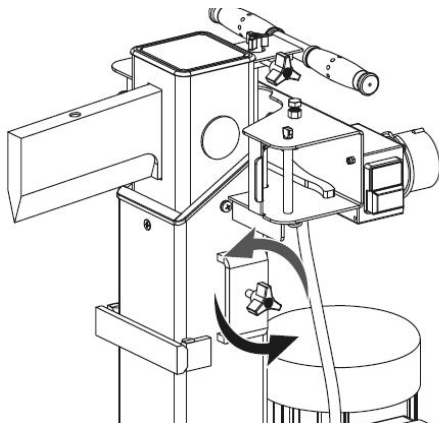


Fig. 7: Mounting support table

Step 1: Before assembly, loosen the star knob by turning it counterclockwise.

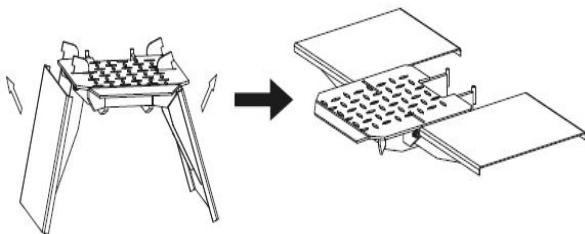


Fig. 8: Mounting support table, part 1

Step 2: Unfold the log support table and make sure that the three parts are at the same surface level.

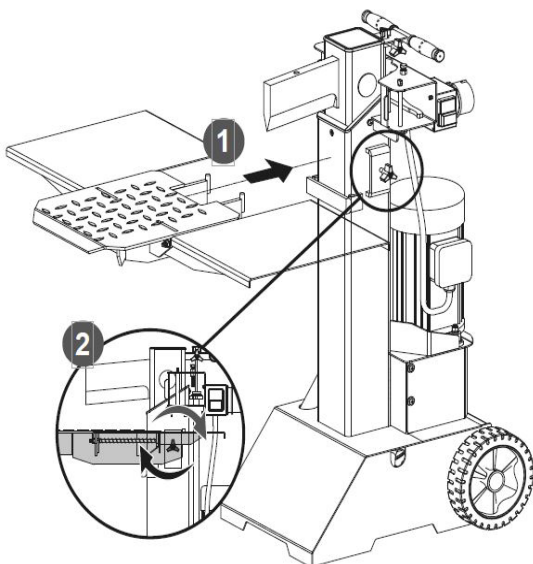


Fig. 9: Mounting support table, part 2

Step 3: Insert the hooks of the wood support table into the mounting brackets.

Step 4: Tighten the star knob.

Mounting the control levers



NOTE!

Before mounting, grease the metal plates of the control levers and the fixing nuts on the upper and lower sides!

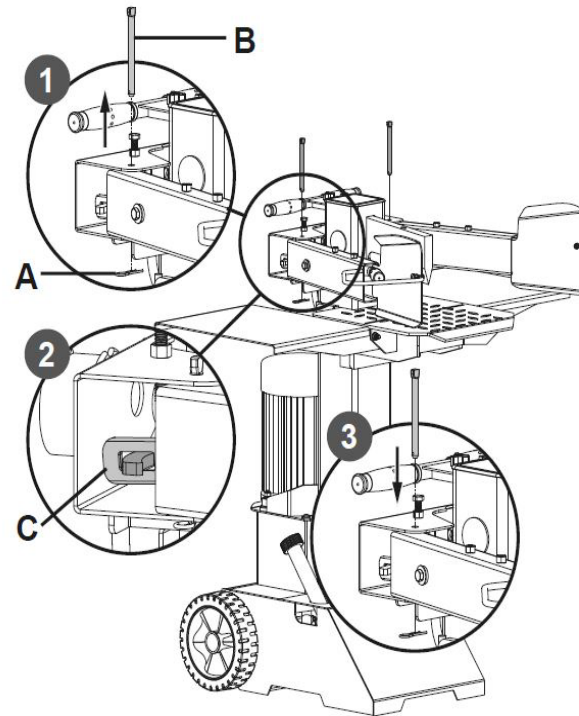


Fig. 10: Mounting the control levers

Mounting the control lever

Step 1: Pull spring pin (Pos. A, Fig. 10) to remove the lock pin (Pos. B, Fig. 10). Apply a thin coat of grease to both surfaces of the control lever guard as illustrated in the figure 10.

Step 2: Insert the control lever and safety guard and make sure the control lever end goes into the slot of connection bracket (Pos. C, Fig. 10).

Step 3: Lock the control lever and safety guard down with the lock pin (Pos. B, Fig. 10) and spring pin (Pos. A, Fig. 10).

Step 4: Follow the same steps to install the other control lever and safety guard on the other side.

Mounting the adjustable log splitter

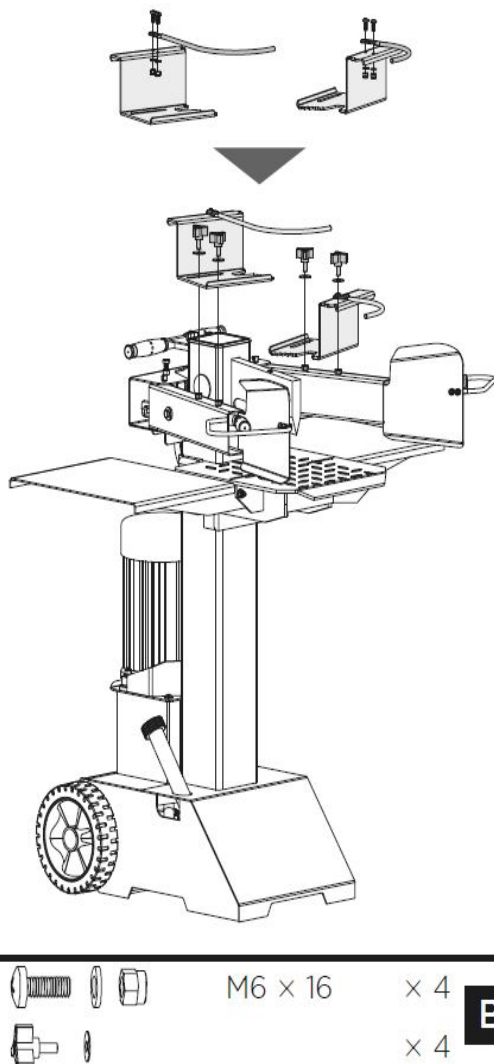


Fig. 11: Mounting the log splitter

8.2 Setting up the log splitter



ATTENTION!

The log splitter must be placed on a level and firm surface to ensure stability. It must be ensured that there is sufficient freedom of movement for working.

8.3 Electrical connection

Make sure that

- the power connection has the same characteristics (voltage, mains frequency, phase position) as the motor,
- if necessary, the mains voltage of 400 V (16 A fuse) is used,
- a cable cross-section of at least 2.5 mm² is used for the supply cable,

- the direction of rotation of the motor is correct (see arrow on the motor). Route the cable from the power source to the splitter in such a way as to prevent tripping over the cable or damage to the cable during work. Protect the power cord from shocks, pulling or corrosive materials.

Step 1: Connect the log splitter to the mains.

Step 2: Switch on the motor briefly.

Step 3: Check the direction of rotation when the motor runs out.

If the motor is rotating in the wrong direction:

Models with phase inverter:

Use a screwdriver to push in the washer in the plug and turn it 180°.

8.4 Setting the wedge stroke

The wedge stroke can be adjusted between 100-550mm. Carry out the following steps to set the wedge stroke:

Step 1: Move the splitting wedge to the top position.

Step 2: Switch off the log splitter and disconnect the power plug.

Step 3: Loosen the star grip (A).

Step 4: Pull the lifting rod up to the end position.

Step 5: Tighten the star grip (A) again.

Step 6: Switch on the log splitter.

Step 7: Check the upper position of the splitting wedge..

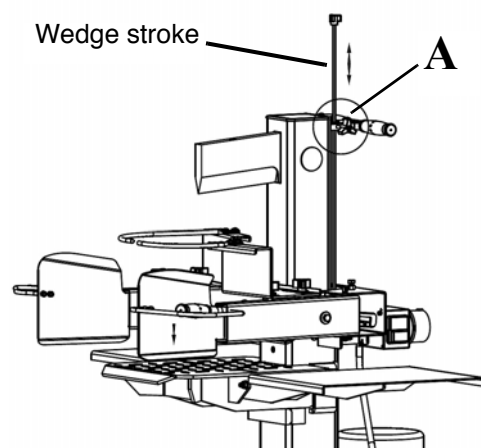


Fig. 12: Wedge stroke

Step 8: At the end of the work: Loosen star grip and push rod down to reset the wedge stroke. Tighten the star grip again.

8.5 Adjusting the log holders

Adjust the log holders (Pos. A, Fig. 13) according to the diameter of the log to obtain the most comfortable control levers angle.

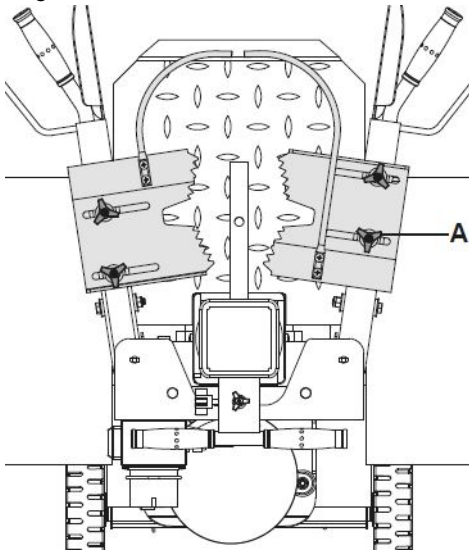


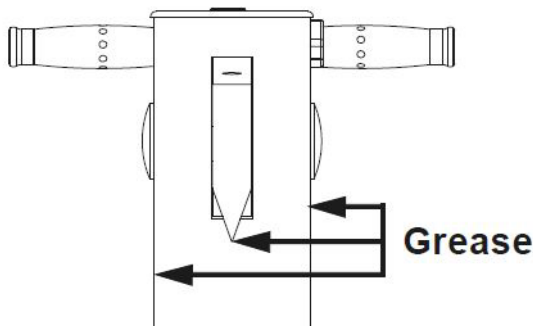
Fig. 13: Holder setting

Hold the log with clamping brackets closely in the control lever guards. Lower levers to start the splitting.

Releasing either lever stops the motion of the splitting wedge. Releasing both handles to return the splitting wedge to the upper position.

9 Working with the log splitter

By lubricating the surface of the stamp with a thin layer of grease before use, the service life of the stamp is increased.



DANGER!

Risk of fatal injury due to electric shock!

Contact with live components may result in fatal injury. Switched-on electrical components can make uncontrolled movements and lead to serious injuries.

- Disconnect the mains plug before making any adjustments to the machine.



WARNING!

Danger to life!

There is a danger to life for the operator and other persons if they do not comply with the following rules.

- The log splitter may only be operated by an instructed and experienced person.
- The operator must not work when under the influence of alcohol, drugs or medication.
- The operator must not work if he is overtired or suffers from illnesses affecting his concentration.
- The log splitter may only be operated by one person. Other persons must stay away from the working area during operation.



CAUTION!

Risk of crushing!

Improper work on the log splitter may result in injury to fingers and hands.

- The wood must always be placed properly on the support or in the guide.
- Never reach into the working area of the log splitter during operation.
- Keep hands away from the log splitter when the splitting wedge moves upwards.
- Do not reach into gaps or cracks in the log section.
- Do not remove jammed pieces of wood with your hands.



ATTENTION!

- The working area must be level and rigid and ensure sufficient freedom of movement.
- The working area must be adequately illuminated.
- When leaving the log splitter, interrupt the power supply by pressing the red button on the switch and pulling the mains plug!



ATTENTION!

- Before initial operation, check the safety devices (in particular the two lever operation) for their function.
- Before each start-up, check that the splitting table is firmly and securely attached to the unit.



Use protective goggles!



Suitable protective gloves



Wear safety boots!



Wear protective clothes!



Wear respiratory protection!



Wear head protection!



Wear hearing protection!

9.1 Functional testing

A functional test should be carried out before each use.

Before starting operation, open the oil filler plug by 2 to 3 turns and leave it open.



NOTE!

The venting screw for the hydraulic oil tank must remain open during operation. Retighten this cover when you have finished your work.

Step 1: Push both shift handles downwards.

Step 2: Lower the split wedge to approx. 5 cm above the table.

Step 3: Release one handle at a time. The split wedge remains in the selected position.

Step 4: Release both shift handles. The split wedge automatically moves to the uppermost position.

Operating conditions:

Ambient temperature range for operation:

+5°C to +40°C.

Altitude: max 1000 m above sea level.

Humidity: max. 50% at 40°C.

9.2 Operation



ATTENTION!

- Make sure that the material to be split is cut as squarely as possible and lies firmly on the splitting table. Sloped or extremely knotty material can slip away or bend the operating arms.
- Always place the split material only on the platforms (tables) provided for this purpose (never on the frame). This can damage the splitter.
- Only split well stored dry wood.
- At low temperatures, allow the splitter to idle for approx. 15 minutes until the oil has warmed up accordingly.
- Never leave the splitter unattended while it is switched on.



ATTENTION!

Before each operation, bleed the tank by unscrewing the filler plug.



ATTENTION!

Ensure that the log splitter is firmly and safely positioned. If necessary, secure the log splitter against overturning!



NOTE!

Lightly oil the split wedge and the guides of the splitting column before starting work.

Bleed hydraulic system



ATTENTION!

Before working with the log splitter, always bleed the hydraulic system!

Carefully unscrew the sealing cap of the hydraulic oil filler neck until the excess air pressure escapes.



NOTE!

The bleed screw for the hydraulic oil tank must remain open during operation!

Only tighten the screw again when you have finished splitting the wood. After finishing work, check that the cap of the hydraulic oil filler neck is tightly closed.

Workflow:

- Step 1: Set the appropriate position of the splitting table and lock the splitting table.
- Step 2: Vent the tank by turning the tank cap a few turns until air can escape.
- Step 3: Connect the mains plug to the mains supply.
- Step 4: Switch on the motor by pressing the green power button. Attention: Pay attention to the direction of motor rotation!

The split wedge should automatically move up to the uppermost position. If the splitting wedge does not move, switch off the motor and exchange the phases at the phase inverter. Then check the direction of motor rotation!



ATTENTION!

At low temperatures, allow the splitter to idle for approx. 15 minutes until the oil has warmed up accordingly.

- Step 5: Place the material to be split on the table and hold it on the operating arm by means of clamping claws.



ATTENTION!

Never place the material to be split at an angle to the feed path of the split wedge.

- Step 6: Push both control arms downwards. The split wedge moves down and splits the wood.
- Step 7: After completion of the splitting process, release at least one operating arm to stop the split wedge or release both operating arms so that the splitting column automatically moves upwards.

9.3 Finish of the operating

- Step 1: Place a 15 to 20 cm high wooden log on the base plate.
- Step 2: Move the split wedge down to the wooden block.
- Step 3: Switch off the machine.
- Step 4: Disconnect the appliance from the mains supply.
- Step 5: Retighten vent screw.
- Step 6: Slightly tilt the unit backwards on the transport handles and roll it on the wheels to the desired position.

10 Care, maintenance and repairs



DANGER!

Risk of fatal injury due to electric shock!

- Contact with live components may result in fatal injury. Switched-on electrical components can make uncontrolled movements and lead to serious injuries.
- Disconnect the mains plug before starting cleaning and maintenance work.

10.1 Care by cleaning

The log splitter must always be kept in a clean condition.



Suitable protective gloves



NOTE!

Never use strong cleaning agents for any cleaning work. This can damage or destroy the device.

- Step 1: Disconnect the mains plug from the socket.
- Step 2: Clean the appliance regularly with a damp cloth and mild detergent.
- Step 3: Spray or oil all unpainted metal surfaces with a little anti-rust spray.

10.2 Maintenance and repair

Maintenance and repair work may only be carried out by qualified personnel.

If the log splitter does not function properly, contact a specialist dealer or our customer service. Contact details can be found in chapter 1.2 Customer service.

All protective and safety devices must be reinstalled immediately after completion of repair and maintenance work.

10.2.1 Split wedge

The split wedge is a wear part which must be sharpened with a fine file if necessary to remove burrs or blunt areas. This increases the splitting performance and protects the log splitter.

Grease the split wedge and the guides of the splitting column regularly.

Keep the split wedge guides clean from dirt, wood shavings, bark and others.

Lubricate the slide rails with grease.

10.2.2 Two-hand safety guard

The combined holding and switching device must remain smooth-running.

Occasionally lubricate with a few drops of oil.

10.2.3 Hydraulic system

The oil level must be checked regularly. The oil level should be 4 to 5 cm below the tank surface.

The hydraulic oil must be changed annually.

Make sure that the moving parts stop and that the log splitter is not connected.

- Make sure that no dirt or deposits get into the oil tank.
- Collect waste oil and recycle it responsibly.
- After an oil change, activate the log splitter several times without splitting in fact.



ATTENTION!

Collecting old oil and handing it over to the local collection points

After the oil change, run the log splitter a few times without load (function test).

10.2.4 Fill up with oil



ATTENTION!

Always fill the oil only when the splitting column is retracted.

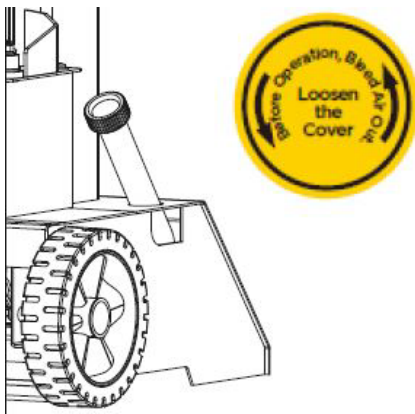


Fig. 14: Tank cap



NOTE!

No dirt may get into the oil tank!

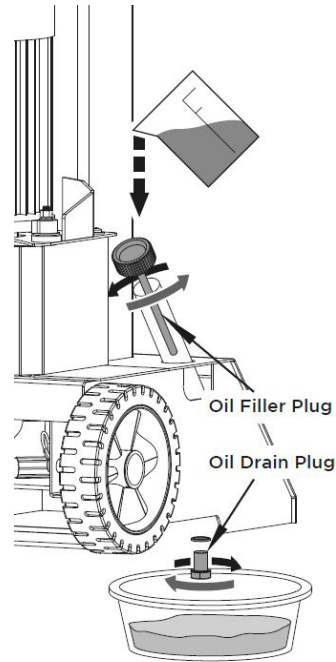


Fig. 15: Oil filler plug/tank cap

Commercially available hydraulic oil can be used for refilling. The oil must be changed once a year, which we recommend before storing the log splitter. Vent the tank by unscrewing the tank cap by a few turns until air can escape.

Oil tank capacity = 4 Liters

Recommended hydraulic oil:

- SHELL TELLUS 22
- MOBIL DTE 11
- ARAL Vitam GF 22
- BP Energol HLP-HM 22

10.2.5 Oil level gauge

On the dipstick, the hydraulic oil must be between the upper mark (max.) and the lower mark (min.). If the hydraulic oil is not within the min. mark, top up the hydraulic oil. Too little oil can damage the log splitter and lead to excessive temperatures in the hydraulic system.

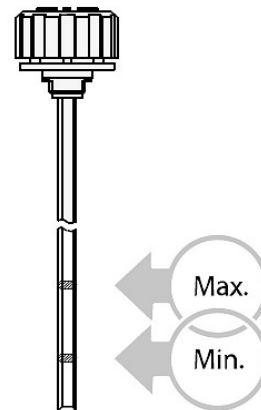


Fig. 16: Oil level gauge

11 Troubleshooting

Fault	Possible causes	Remedy
Engine does not start	<ol style="list-style-type: none"> 1. No current in the power socket 2. Defective electrical extension cable 3. Wrong connection cable 3 ~ 400V 4. Switch is defective 	<ol style="list-style-type: none"> 1. Check mains fuse 2. Pull out the plug, check and replace it 3. 5-Line Connection at 1.5-Ø mm 4. Check by an electrician
Incorrect direction of motor rotation	Incorrect connection	<ol style="list-style-type: none"> 1. Change the pole-changing device in the plug with a screwdriver 2. Reverse polarity by an electrician
The log splitter does not work when motor is running	<ol style="list-style-type: none"> 1. The valve is not opened because the connecting parts become disconnected 2. Control lever or connecting parts are deformed 3. Lower hydraulic oil level 	<ol style="list-style-type: none"> 1. Check oil level and fill up if necessary 2. Repair the deformed parts 3. Check hydraulic oil and fill up
Oil heats up very strongly	1. Too little oil	1. Check oil level and fill up if necessary
The machine does not split the wood or splits it too slowly	<ol style="list-style-type: none"> 1. Big branch in the trunk 2. Trunk diameter too large 3. Operating pressure too low 	<ol style="list-style-type: none"> 1. Turn off the machine, turn the trunk. 2. Switch off the machine, remove the trunk. 3. Check hydraulic system.
The log splitter works with unusual vibrations and noises	Hydraulic oil level is dropped	Check hydraulic oil and top up.

12 Disposal, reusing used machines

In your own interest and to protect the environment make sure that all machine components are exclusively disposed of in as intended and permitted.

12.1 Decommissioning

Disused machines must be decommissioned immediately to prevent misuse at a later point and putting the environment or persons at risk.

Step 1: Remove all environmentally hazardous processing materials from the used machine.

Step 2: If necessary, disassemble the machine into assemblies and components that are easy to handle and suitable for recycling.

Step 3: The machine components and processing materials must be disposed of using the intended disposal methods.

12.2 Disposal of electrical equipment

Note that electrical equipment contains a variety of recycling-capable materials and also environmentally hazardous components.

Please help to separate these components and dispose of them responsibly. In case of doubt, contact your local waste disposal authority. Consult a specialist disposal agent for recycling if needed.

12.3 Disposing of lubricants

Lubricant manufacturers provide disposal information for the lubricants used. If necessary, request productspecific data sheets.

12.4 Disposal via municipal collection points

Disposal of used electrical and electronic equipment (Applicable in the countries of the European Union and other European countries with a separate collection system for these appliances).



The symbol on the product or its packaging indicates that this product should not be treated as normal household waste, but must be returned to a collection point for the recycling of electrical and electronic equipment. By helping to properly dispose of this product, you are protecting the environment and the health of others. Environment and health are endangered by improper disposal. Material recycling helps to reduce the consumption of raw materials. For more information about recycling this product, contact your local community, municipal waste management, or the shop where you purchased the product.

13 Spare parts



DANGER!

Risk of injury caused by the use of incorrect spare parts!

The use of incorrect or faulty spare parts may cause risks for operating staff and damage as well as malfunctions.

- Exclusively genuine spare parts made by the manufacturer or spare parts authorised by the manufacturer shall be used.
- Always contact the manufacturer if you are unsure.



Tips and recommendations

The manufacturer warranty shall be rendered void in the event of a use of unauthorised spare parts.

13.1 Spare parts orders

Spare parts are available from authorised retailers.

The following key data is required for queries or spare parts orders:

- Device type
- Item number
- Position number
- Year of construction
- Quantity
- Desired shipping type (post, freight, sea, air, express)
- Shipping address

Spare parts orders without the aforementioned data cannot be taken into account. The supplier shall determine the shipping type if no relevant data was provided.

Data on the machine type, item number and year of manufacture is listed on the type plate attached to the device.

Example

The support table for the log splitter HSE 8-550 - 230V must be ordered. The support table is identified in the spare parts drawing 1 with the number 8.

When ordering spare parts, send a copy of the spare parts drawing (1) with the marked component (support table) and marked position number (8) to the authorised dealer or spare parts department and provide the following information:

- Type of device: **Log Splitter HSE 8-550 - 230V**
- Item number: **5981008**
- Drawing number: **1**
- Position number: **8**

13.2 Spare parts drawing HSE 8-550

The following drawing should help to identify necessary spare parts in case of service. To order, send a copy of the parts drawing with the marked components to your authorized dealer.

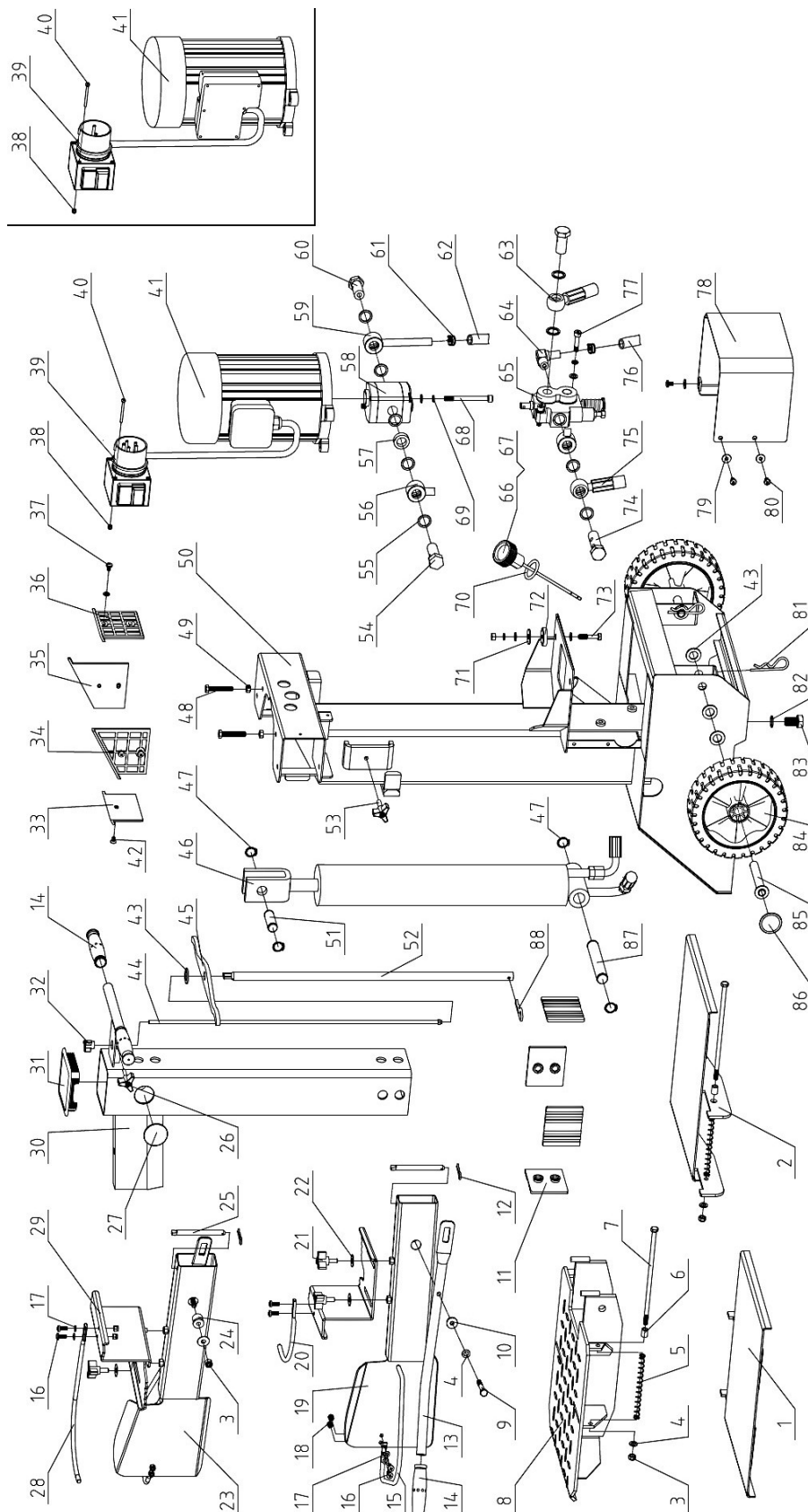
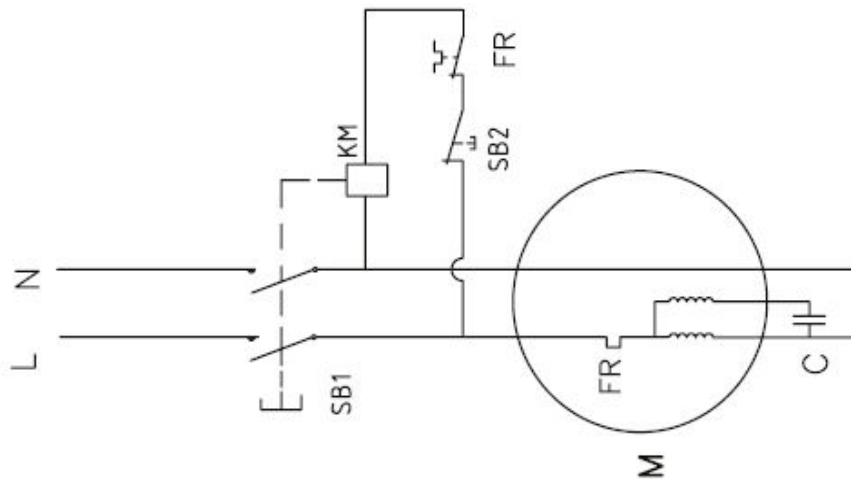


Fig. 17: Spare parts drawing of log splitter HSE 8-550

14 Electrical circuit diagrams

Electrical circuit diagram of HSE 8-550 230V (5981008)



Electrical circuit diagram of HSE 8-550 400V (5981009)

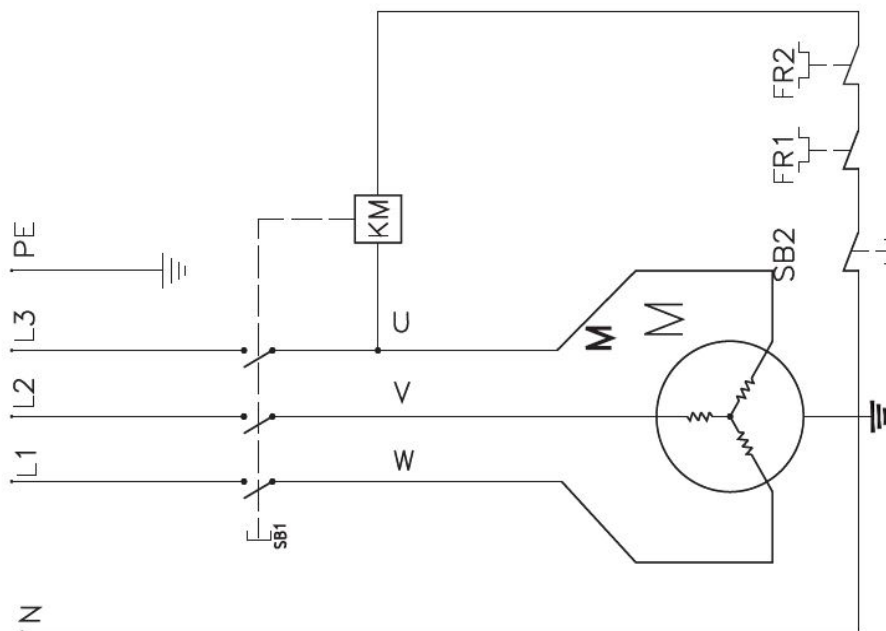


Fig. 18: Electrical circuit diagrams of log splitter HSE 8-550 230 V (top) and 400 V (bottom)

15 Hydraulic circuit diagram

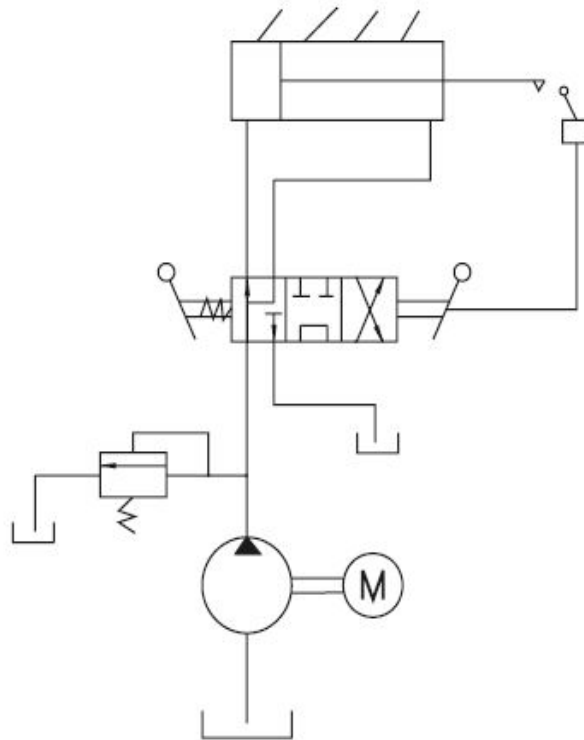


Fig. 19: Hydraulic circuit diagram HSE 8-550 (230 V and 400 V)

16 EC Declaration of Conformity

According to Machinery Directive 2006/42/EC Annex II 1.A

Manufacturer/seller: Stürmer Maschinen GmbH
Dr.-Robert-Pfleger-Str. 26
D-96103 Hallstadt

hereby declares that the following product

Product group: Holzkraft® Woodworking Machines

Machine type: Log Splitter

Designation of the Log splitter *: ☐ HSE 8-550 - 230V **Item number *:** ☐ 5981008
☐ HSE 8-550 - 400V ☐ 5981009

Serial number*: _____

Year of manufacture*: 20____

* please fill in according to the information on the type plate

complies with all relevant regulations of the aforementioned directive as well as any other, applicable directives (subsequently added) – including the changes applicable at the time the declaration was made.

Relevant EU directives: 2014/30/EU EMC Directive
2011/65/EU RoHS Directive
2012/19/EU WEEE-Directive

The following harmonised standards have been applied:

DIN EN 609-1:2017-04	Agricultural and forestry machinery - Safety of log splitters - Part 1: Wedge splitter
DIN EN 60204-1:2019-06	Safety of machinery - Electrical equipment of machines - Part 1: General requirements
DIN EN 55014-1:2018-08	Electromagnetic compatibility - Requirements for household appliances, electric tools and similar apparatus - Part 1: Emission
DIN EN 55014-2:2016-01	Electromagnetic compatibility - Requirements for household appliances, electric tools and similar apparatus - Part 2: Immunity
DIN EN IEC 61000-3-2:2019-12	Electromagnetic compatibility (EMC) - Part 3-2: Limits - Limits for harmonic current emissions
DIN EN IEC 61000-3-11:2021-03	Electromagnetic compatibility (EMC) - Part 3-11: Limits; Limitation of voltage changes, voltage fluctuations and flicker in public low-voltage supply systems; Equipment with rated current ≤ 75 A and subject to conditional connection

Responsible for documentation: Kilian Stürmer, Stürmer Maschinen GmbH,
Dr.-Robert-Pfleger-Str. 26, D-96103 Hallstadt

Hallstadt, 26.07.2021



Kilian Stürmer
Managing Director



