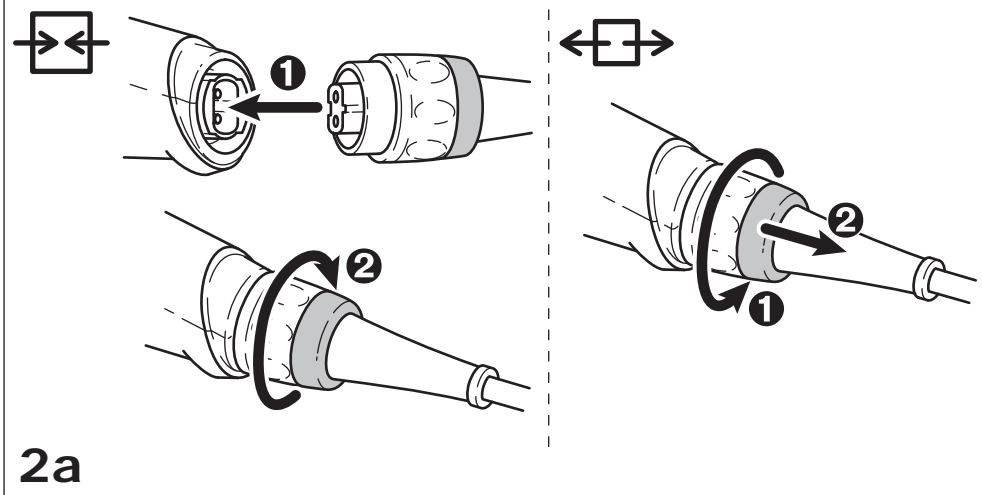
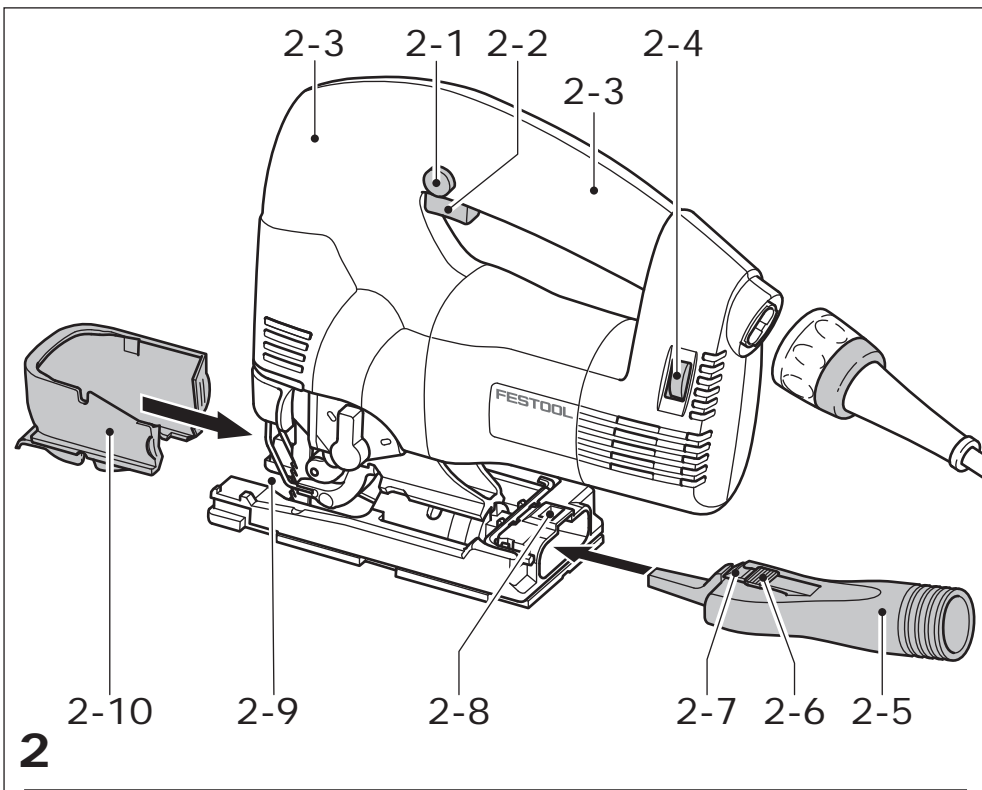
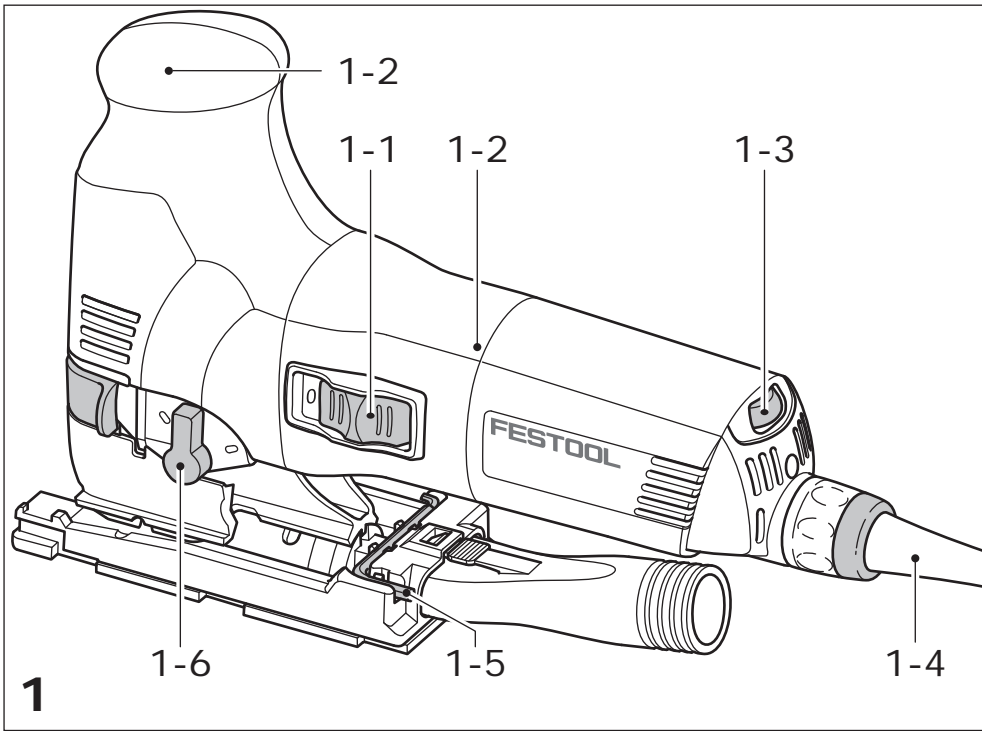
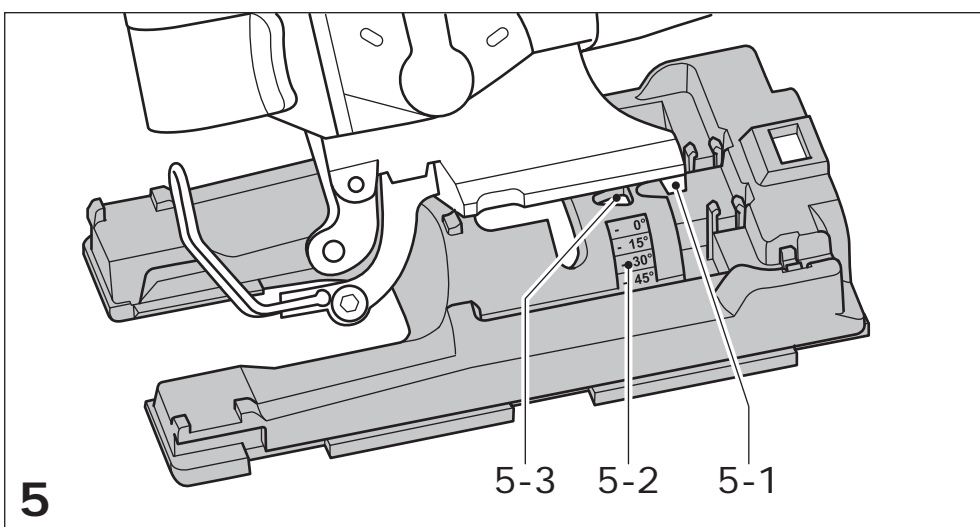
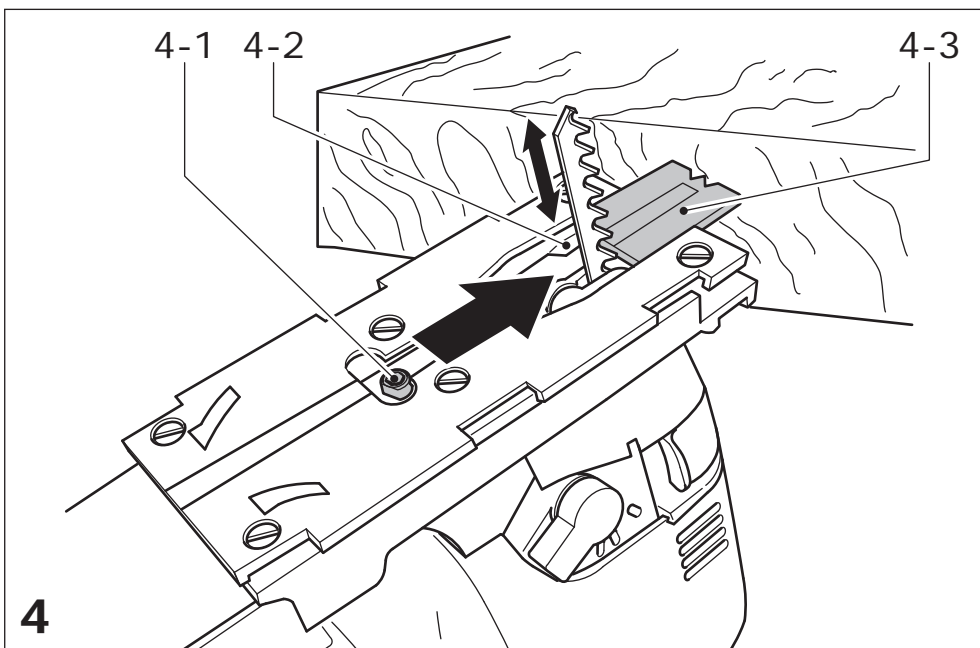
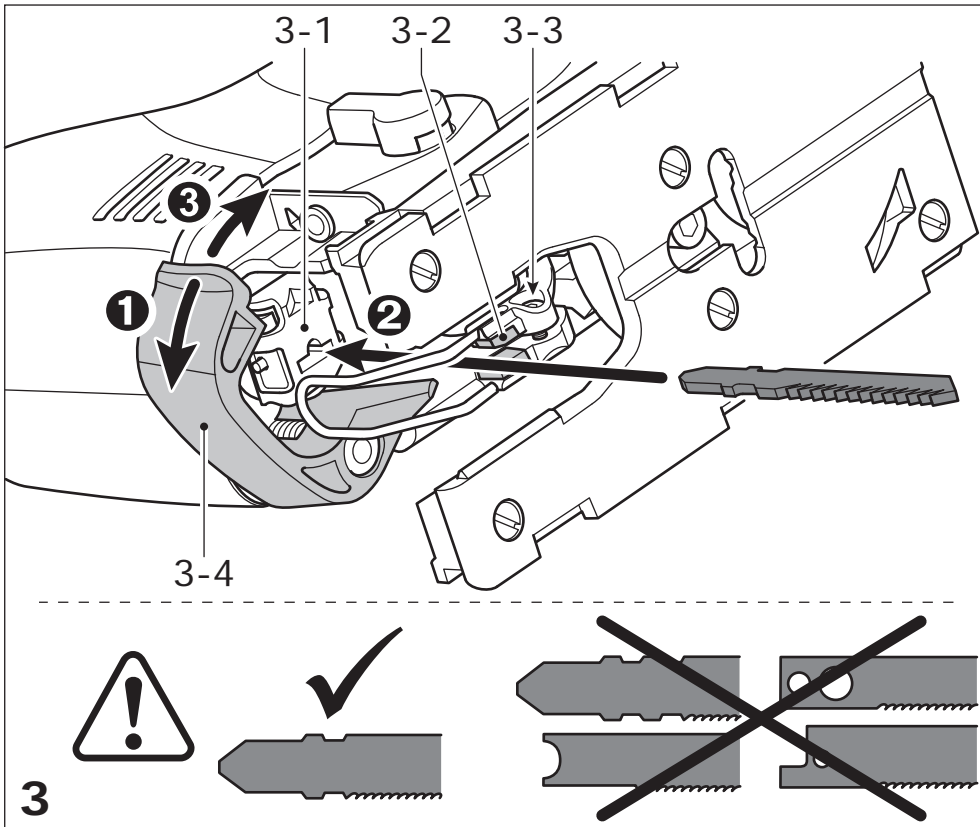


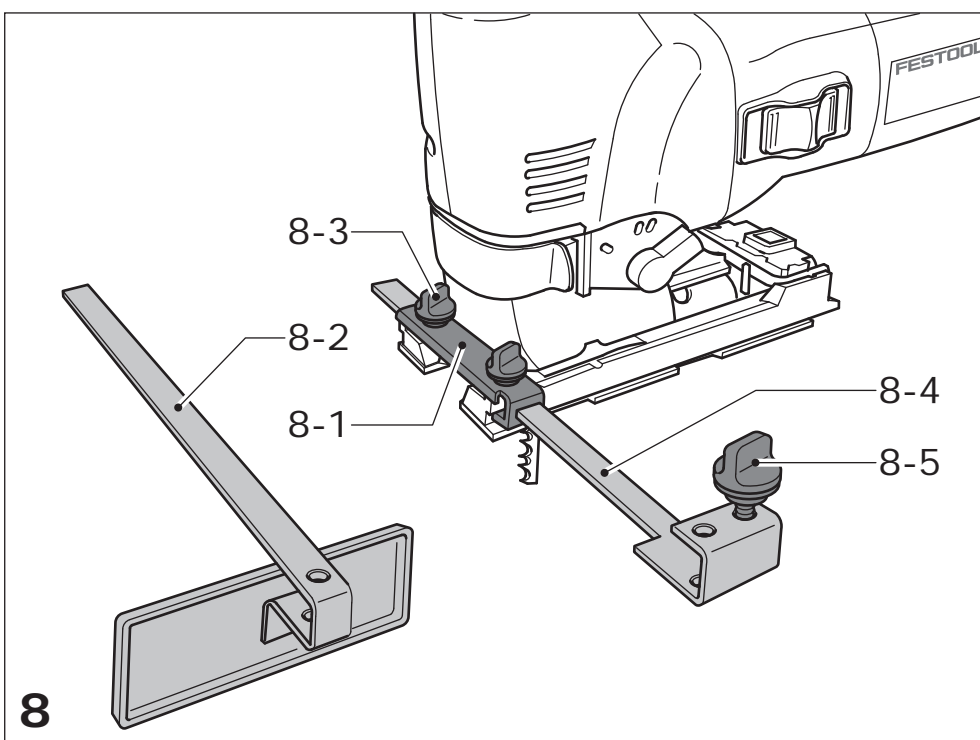
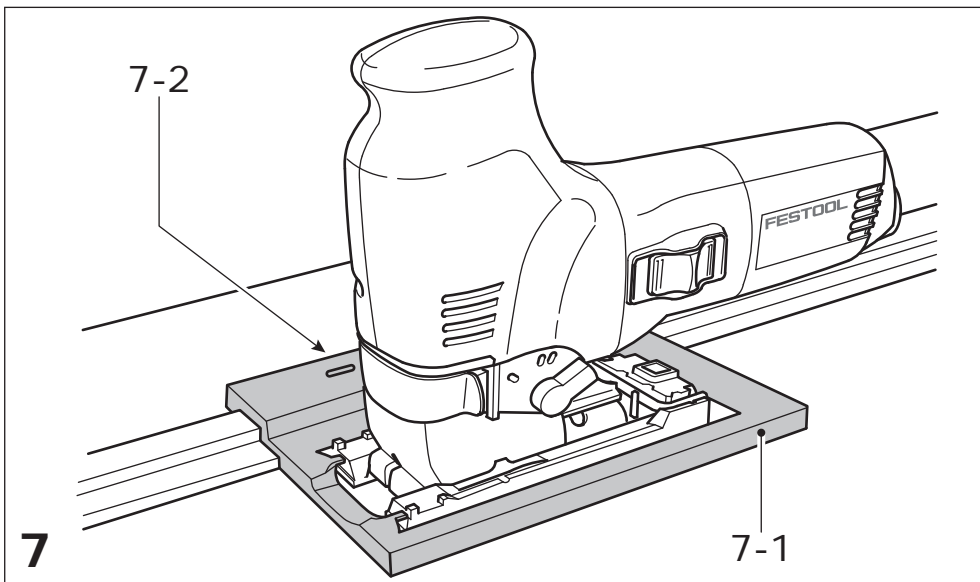
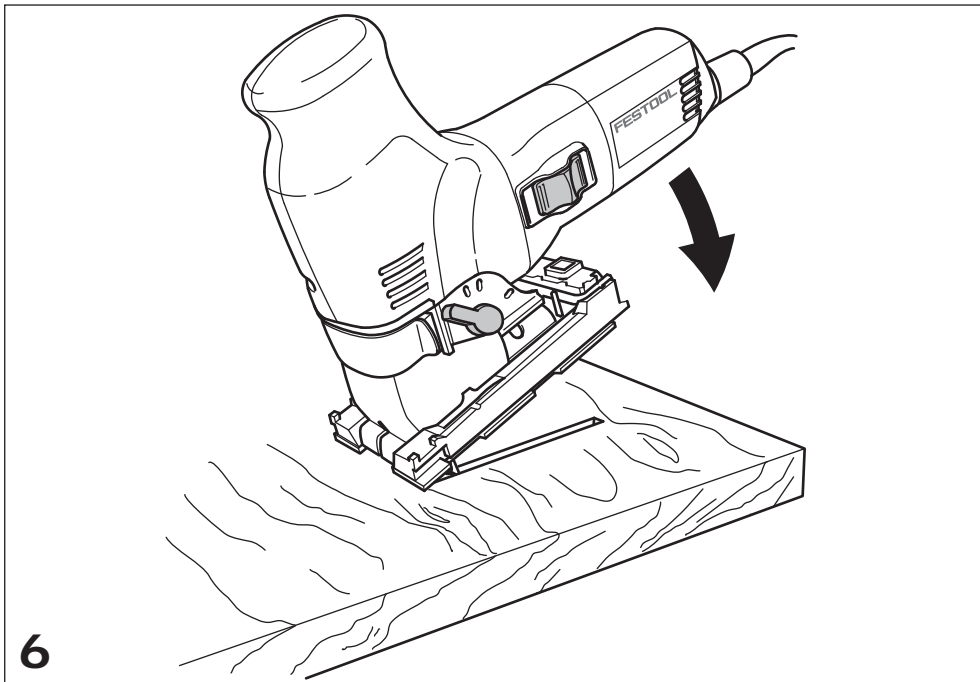
de	Originalbetriebsanleitung - Stichsäge	8
en	Original Instructions - jigsaw	14
fr	Notice d'utilisation d'origine - scie sauteuse	20
es	Manual de instrucciones original - Caladora	26
it	Istruzioni per l'uso originali - Seghetto alternativo	33
nl	Originele gebruiksaanwijzing - decoupeerzaag	39
sv	Originalbruksanvisning - sticksåg	45
fi	Alkuperäiset käyttöohjeet - Pistosaha	51
da	Original brugsanvisning - stiksav	57
nb	Original bruksanvisning for stikksag	63
pt	Manual de instruções original - Serra tico-tico	69
ru	Оригинальное руководство по эксплуатации — лобзиковая пила	75
cs	Originální návod k obsluze – přímočará pila	82
pl	Oryginalna instrukcja obsługi - wyrzynarka	88

Trion PS 300 EQ PSB 300 EQ









Declaration of Conformity

We as the manufacturer **Festool GmbH, Wertstraße 20, 73240 Wendlingen, Germany** declare under our sole responsibility that the product(s):

Designation: **Jigsaw**
Designation of Type(s): **PS 300 EQ, PSB 300 EQ**
Serial number(s) ¹⁾: **205225, 205224, 489274**

fulfills all the relevant provisions of the following UK Regulations:

- S.I. 2008/1597 Supply of Machinery (Safety) Regulations 2008
- S.I. 2016/1091 Electromagnetic Compatibility Regulations 2016
- S.I. 2012/3032 Restriction of the Use of Certain Hazardous Substances in Electrical and Electronic Equipment Regulations 2012

and are manufactured in accordance with the following designated standards:

- BS EN 62841-1: 2015
- BS EN 62841-2-11:2016+A1:2020
- BS EN 55014-1:2017
- BS EN 55014-2:2015
- BS EN IEC 61000-3-2:2019
- BS EN 61000-3-3:2013
- BS EN IEC 63000:2018

¹⁾ in the specified serial number range (S-Nr.) from 400000000 – 499999999



Place and date of declaration: Wendlingen, 15.04.2021

Signed on behalf of and in name of Festool GmbH

A blue ink signature of Markus Stark, appearing as 'ppa. Stark' followed by a stylized signature.

Markus Stark
Head of Productdevelopment

A blue ink signature of Ralf Brandt, appearing as 'i. v. Q. Brandt' followed by a stylized signature.

Ralf Brandt
Head of Productconformity

Stichsäge Jig saw Scie sauteuse	Seriennummer * Serial number * N° de série * (T-Nr.)
PS 300 EQ	205224, 205225
PSB 300 EQ	489274, 491763

de EG-Konformitätserklärung. Wir erklären in alleiniger Verantwortung, dass dieses Produkt allen einschlägigen Bestimmungen der folgenden Richtlinien einschließlich ihrer Änderungen entspricht und mit den folgenden Normen übereinstimmt:

en EC-Declaration of Conformity. We declare under our sole responsibility that this product is in conformity with all relevant provisions of the following directives including their amendments and complies with the following standards:

fr CE-Déclaration de conformité communautaire. Nous déclarons sous notre propre responsabilité que ce produit est conforme aux normes ou documents de normalisation suivants:

es CE-Declaración de conformidad. Declaramos bajo nuestra exclusiva responsabilidad que este producto corresponde a las siguientes normas o documentos normalizados:

it CE-Dichiarazione di conformità. Dichiariamo sotto la nostra esclusiva responsabilità che il presente prodotto è conforme alle norme e ai documenti normativi seguenti:

nl EG-conformiteitsverklaring. Wij verklaren op eigen verantwoordelijkheid dat dit produkt voldoet aan de volgende normen of normatieve documenten:

sv EG-konformitetsförklaring. Vi förklarar i eget ansvar, att denna produkt stämmer överens med följande normer och normativa dokument:

fi EY-standardinmukaisuusvakuutus. Vakuutamme yksinvastuullisina, että tuote on seuraavien standardien ja normatiivisten ohjeiden mukainen:

da EF-konformitetserklæring. Vi erklærer at have alene ansvaret for, at dette produkt er i overensstemmelse med de følgende normer eller normative dokumenter:

nb CE-Konformitetserklæring. Vi erklærer på eget ansvar at dette produktet er i overensstemmelse med følgende normer eller normative dokumenter:

pt CE-Declaração de conformidade. Declaramos, sob a nossa exclusiva responsabilidade, que este produto corresponde às normas ou aos documentos normativos citados a seguir:

ru Декларация соответствия ЕС. Мы заявляем с исключительной ответственностью, что данный продукт соответствует следующим нормам или нормативным документам:

cs ES prohlášení o shodě. Prohlašujeme s veškerou odpovědností, že tento výrobek je ve shodě s následujícími normami nebo normativními dokumenty:

pl Deklaracja o zgodności z normami UE. Niniejszym oświadczamy na własną odpowiedzialność, że produkt ten spełnia następujące normy lub dokumenty normatywne:

2006/42/EG, 2014/30/EU, 2011/65/EU

EN 62841-1: 2015 + AC:2015

EN 62841-2-11:2016

EN 55014-1: 2017

EN 55014-2: 2015

EN 61000-3-2: 2014

EN 61000-3-3: 2013

EN 50581: 2012



Festool GmbH

Wertstr. 20, D-73240 Wendlingen
GERMANY

Wendlingen, 2019-09-09

Markus Stark
Head of Product Development

Ralf Brandt
Head of Product Conformity

* im definierten Seriennummer-Bereich (S-Nr.) von 40000000 - 49999999

in the specified serial number range (S-Nr.) from 40000000 - 49999999

dans la plage de numéro de série (S-Nr.) de 40000000 - 49999999

Contents

1	Symbols.....	14
2	Safety warnings.....	14
3	Intended use.....	15
4	Technical data.....	15
5	Functional description.....	16
6	Commissioning.....	16
7	Settings.....	16
8	Working with the electric power tool.....	18
9	Service and maintenance.....	18
10	Accessories.....	18
11	Environment.....	19
12	General information.....	19

1 Symbols



Warning of general danger



Warning of electric shock



Read the operating instructions and safety instructions.



Wear a dust mask.



Wear ear protection.



Wear protective goggles.



Wear protective gloves.



Connecting the mains power cable



Disconnecting the mains power cable



Do not dispose of it with domestic waste.



Handling instruction



Tip or advice



Safety class II



CE marking: Confirms the conformity of the power tool with the European Community directives.



UKCA marking: The United Kingdom Conformity Assessed symbol is a marking for products being placed on the market in the United Kingdom. It is a manufacturer's indication that the product is in conformance with the relevant regulations in the UK.

2 Safety warnings

2.1 General power tool safety warnings



WARNING! Read all safety warnings, instructions, illustrations and specifications provided with this power tool. Failure to follow all instructions listed below may result in electric shock, fire and/or serious injury.

Save all warnings and instructions for future reference.

The term "power tool" in the warnings refers to your mains-operated (corded) power tool or battery-operated (cordless) power tool.

2.2 Machine-related safety instructions

- **Hold the power tool by insulated gripping surfaces [1-2; 2-3], when performing an operation where the cutting accessory may contact hidden wiring or its own cord.** Cutting accessory contacting a "live" wire may make exposed metal parts of the power tool "live" and could give the operator an electric shock.
- **Use clamps or another practical way to secure and support the workpiece to a stable platform.** Holding the workpiece by hand or against your body leaves it unstable and may lead to loss of control.
- **Festool electric power tools must only be installed on work tables provided by Festool for this purpose.** If the tool is installed in another, or self-made, work table, it can become unstable and result in serious accidents.
- **Wait until the power tool has come to a complete halt before placing it down.** The insertion tool can get caught and lead to a loss of control of the power tool.
- Deformed or cracked saw blades and saw blades with blunt or broken cutting edges must not be used.
- The saw blade on the jigsaw must always be running when it makes contact with the workpiece.



Wear suitable personal protective equipment: Ear protection, protective goggles, dust mask for work that generates dust, protective gloves for working with rough materials and for changing tools.

- Always connect the machine to a dust extractor when performing work that generates dust.
- Check the plug and the cable regularly and should either become damaged, in order to avoid a hazard, have them replaced by an authorised after-sales service workshop.
- **Only for AS/NZS:** The tool shall always be supplied via residual current device with a rated residual current of 30 mA or less.

2.3 Metal processing



When processing metal, the following measures must be taken for safety reasons:

- Install an upstream residual-current circuit breaker (RCD, PRCD).
- Connect the machine to a suitable dust extractor.
- Regularly remove dust deposits from the motor housing.
- Use a metal saw blade.
- Close the chip guard.



Wear protective goggles.

2.4 Emission levels

The levels determined in accordance with EN 62841 are typically:

Sound pressure level	$L_{PA} = 83 \text{ dB(A)}$
Sound power level	$L_{WA} = 94 \text{ dB(A)}$
Uncertainty	$K = 3 \text{ dB}$



CAUTION

Noise generated when working
Risk of damage to hearing

- Use ear protection.

4 Technical data

Jigsaws	PS 300 EQ, PSB 300 EQ
Power	720 W
Stroke rate	1000 - 2900 min ⁻¹
Stroke length	26 mm
Pendulum stroke	3 settings

Vibration emission level a_h (vector sum for three directions) and uncertainty K measured in accordance with EN 62841:

Sawing wood	$a_h = 5.5 \text{ m/s}^2$ $K = 2.0 \text{ m/s}^2$
Sawing metal	$a_h = 4.5 \text{ m/s}^2$ $K = 2.0 \text{ m/s}^2$

The specified emission levels (vibration, noise)

- are used to compare machines.
- They are also used for making preliminary estimates regarding vibration and noise load during operation.
- They represent the primary applications of the power tool.



CAUTION

The emission values may deviate from the specified values. This is dependent on how the tool is used and the type of workpiece being machined.

- The actual load during the entire operating cycle must be evaluated.
- Depending on the actual load, suitable protective measures must be defined in order to protect the operator.

3 Intended use

Jigsaws are designed for sawing wood and materials similar to wood. With the special saw blades offered by Festool, these machines can also be used for sawing plastic, steel, aluminium, non-ferrous metal and ceramic plates.



The user is liable for improper or non-intended use.

Jigsaws	PS 300 EQ, PSB 300 EQ	
Max. inclined position	45° to both sides	
Max. cutting depth (depending on saw blade)	Wood	120 mm
	Aluminium	20 mm
	Steel	10 mm
Weight according to EPTA-Procedure 01:2014	2.4 kg	

5 Functional description

- [1-1; 2-2] On/Off switch-/Ausschalter
- [1-2; 2-3] Gripping surface
- [1-3; 2-4] Stroke speed control
- [1-4] Mains power cable
- [1-5] Allen key
- [1-6] Pendulum stroke switch
- [2-1] Locking button (only PS 300 EQ)
- [2-5] Extraction adapter
- [2-6] Lever release extraction adapter
- [2-7] Hook engage extraction adapter
- [2-8] Recess for hook on extraction adapter
- [2-9] Chip ejection
- [2-10] Chip guard

The specified illustrations appear at the beginning of the Operating Instructions.

6 Commissioning



WARNING

Unauthorised voltage or frequency.

Risk of accidents

- ▶ The mains voltage and the frequency of the power source must correspond to the specifications on the name plate.
- ▶ In North America, only Festool machines with the voltage specifications 120 V/60 Hz may be used.



WARNING

Risk of injury, electric shock

- ▶ Always disconnect the mains plug from the socket before performing any work on the machine.



CAUTION

Heating of the Plug it connection if bayonet fitting is not completely locked

Risk of burns

- ▶ Before switching on the power tool, make sure that the bayonet fitting at the mains cable is closed fully and locked.

Connecting and detaching the mains power cable [1-4] see fig. [2a].

PS 300 EQ

The tool has a slide switch [1-1] to switch it on and off (I = ON; 0 = OFF).

PSB 300 EQ

The tool has a pressure switch [2-2] to switch it on and off.

The locking button [2-1] can be engaged to operate in continuous mode. Press the button again to release the lock.

7 Settings



WARNING

Risk of injury, electric shock

- ▶ Always disconnect the mains plug from the socket before performing any work on the machine.

7.1 Changing tools



CAUTION

Risk of injury from hot and sharp insertion tool

- ▶ Do not use any blunt or faulty insertion tools.
- ▶ Wear protective gloves when handling an insertion tool.
- ▶ Open the clamping lever [3-4] as far as the stop.
- ▶ Remove the existing saw blade.
- ▶ Insert a new saw blade into the saw blade mount [3-1] as far as it will go.

- ▶ Close the clamping lever.

7.2 Adjusting the saw blade guidance

To be better able to guide the saw blade, pendulum jigsaws have an additional carbide guide **[3-2]** immediately above the workpiece.

- ▶ Tighten the screw **[3-3]** using the allen key **[1-5]** until the jaws are almost touching the saw blade.



It must be possible to move the saw blade slightly.

7.3 Inserting the splinterguard

The splinterguard prevents the edges of the material from splintering during the cut, even at the end where the saw blade exits the material.

- ▶ Switch off the machine and slide the splinterguard **[4-3]** onto the guide **[4-2]** and up to the saw blade.
- ▶ Switch on the jigsaw.
- ▶ With the machine running, push the splinterguard in on a flat plane until it is flush with the front edge of the saw table. This cuts into the splinterguard.

- i** To guarantee reliable operation of the splinterguard, it must seal tightly on both sides of the saw blade. A new splinterguard should therefore be fitted after every saw blade change to guarantee splinter-free cuts.

7.4 Inserting the chip guard

The chip guard prevents chips from flying away and improves the efficiency of the chip extraction system.

- ▶ Insert the chip guard **[2-10]** between the saw table and the clamping lever.
- ▶ Gently slide the chip guard back until it engages.

7.5 Adjusting the saw table

For bevel cuts, the saw table can be swivelled to either side by up to 45°.

- ▶ Remove the chip guard and the splinterguard.
- ▶ Open the clamping screw **[4-1]** with the allen key .
- ▶ Slide the saw table forwards by approx. 5 mm.
- ▶ Set the desired inclination using the scale **[5-2]**.
- ▶ Tighten the clamping screw **[4-1]**.

To saw close to the edges, the saw table can be shifted backwards.

- ▶ Remove the chip guard and the splinterguard.
- ▶ Open the clamping screw **[4-1]** with the allen key .
- ▶ Slide the saw table into the rear position so that the centring mandrel **[5-1]** slots into the opening **[5-3]**.
- ▶ Tighten the clamping screw **[4-1]**.

7.6 Adjusting the pendulum stroke

The pendulum stroke on pendulum jigsaws can be adjusted to machine different materials with the correct rate of advance. Select the required setting using the pendulum stroke switch **[1-6]**:

Position 0 = pendulum stroke off

Position 3 = maximum pendulum stroke

Recommended pendulum stroke setting

Hardwood, softwood, chipboard, wood fibreboard	1 - 3
Blockboard, plywood, plastic	1 - 2
Ceramics	0
Aluminium, non-ferrous metals	0 - 2
Steel	0 - 1

7.7 Stroke speed control

The stroke rate can be continuously adjusted between 1000 and 2900 min⁻¹ using the adjusting wheel **[1-3; 2-4]**. This enables you to optimise the cutting speed to suit the respective material.

Recommended stroke speed (position of the adjusting wheel)

Hard and soft wood, blockboard, plywood, chipboard	6
Fibreboard	4 - 6
Plastic	3 - 6
Ceramic, aluminium, non-ferrous metals	3 - 5
Steel	2 - 4

7.8 Extraction



WARNING

Health risk due to dust

- ▶ Always work with an extractor.
- ▶ Comply with national regulations.

The extraction adapter **[2-5]** allows jigsaws to be connected to a dust extractor (hose diameter 27 mm).

- ① Always use a splinterguard when working with extraction to prevent the extraction channels from becoming blocked.
- ▶ Insert the extraction adapter in the rear opening of the saw table so that the hook [2-7] engages in the recess [2-8].
- ▶ To remove the extraction adapter, press the lever [2-6].

8 Working with the electric power tool



WARNING

Risk of injury

- ▶ Always secure the workpiece in such a manner that it cannot move while being machined.

8.1 Free guidance along a scribe mark

The triangular shape of the splinterguard [4-3] indicates the cutting line of the saw blade. This facilitates sawing along a scribe mark.

8.2 Plunging without pre-drilling

In order to produce plunge cuts in wood workpieces, the saw table must be in the forward position (base position, see fig. [1]).

- ▶ Position the saw onto the workpiece with the front edge of the saw table
- ▶ and plunge the saw into the workpiece at the maximum stroke rate and in pendulum stroke setting 3, see fig. [6].

8.3 Temperature cut-out (only PS 300 EQ)

The power supply is restricted and the speed reduced if the motor exceeds a certain temperature. The power tool continues operating at reduced power to allow the ventilator to cool the motor quickly. The power tool starts up again automatically once the motor has cooled sufficiently.

9 Service and maintenance



WARNING

Risk of injury, electric shock

- ▶ Always pull the mains plug from the socket before performing any servicing and maintenance work.
- ▶ All maintenance and repair work which requires the motor housing to be opened should always be carried out by an authorised service workshop.



Customer service and repairs must only be carried out by the manufacturer or service workshops. Find the nearest address at:
www.festool.co.uk/service



Always use original Festool spare parts. Order no. at:
www.festool.co.uk/service

- ▶ Damaged safety devices and components must be repaired or replaced in a recognised specialist workshop, unless otherwise indicated in the operating instructions.

To ensure constant air circulation, always keep the cooling air openings in the motor housing clean and free of blockages.

9.1 Cleaning the chip ejection opening

Clean the chip ejection opening [2-9] regularly to prevent blockages:

- ▶ Remove the chip guard.
- ▶ Use a brush or vacuum cleaner to clean the chip ejection opening.
- ▶ Reinsert the chip guard.
- ▶ Damaged safety devices and components must be repaired or replaced in a recognised specialist workshop, unless otherwise indicated in the operating instructions.

10 Accessories

The order numbers of the accessories and tools can be found in the Festool catalogue or on the Internet at "www.festool.com".

10.1 Festool FS guide system

Using the Festool FS guide system (fig. [7]) makes it easier to produce straight and precise cuts, especially with material thicknesses of up to 20 mm. This involves the jigsaw being inserted in a guide rail adapter [7-1] (order no. 490031), which is used to guide it along the guide rail. In order to set it to have zero play, there are two adjustable guidance jaws [7-2] on the guide rail adapter. Only use cross-set saw blades when using the guide rail adapter. We recommend the S 75/4 FSG Festool saw blade.

10.2 Parallel side fence

The parallel side fence (order no. 490119) allows the jigsaw to be guided in parallel with the edge of the workpiece. The parallel side fence can be installed from both sides of the saw table:

- ▶ Slide the clamp [8-1] onto the saw table from the front.

- ▶ Slide the parallel side fence **[8-2]** from the side through the clamp into the desired position.
- ▶ Close the rotary knob **[8-3]**.

10.3 Core maker

The core maker (order no. 490118) can be used to create circular cuts with a diameter between 120 and 720 mm. The core maker can be installed from both sides of the saw table:

- ▶ Slide the clamp **[8-1]** onto the saw table from the front.
- ▶ From the side, slide the core maker **[8-4]** into the desired position through the clamp.
- ▶ Close the rotary knob **[8-3]**.
- ▶ Insert the circle tip **[8-5]** into the rear hole of the core maker.

10.4 Festool CMS

When combined with the Festool CMS system, the jigsaw becomes a semi-stationary bench saw for profiled cuts. See the CMS brochure for more information.

10.5 Saw blades, other accessories

In order to saw different materials quickly and cleanly, Festool offers saw blades for all applications that are specially designed for your Festool jigsaw.

11 Environment



Do not dispose of the device in the household waste! Recycle devices, accessories and packaging. Observe applicable national regulations.

EU only: In accordance with the European Directive on waste electrical and electronic equipment and implementation in national law, used power tools must be collected separately and handed in for environmentally friendly recycling.

Information on REACH: www.festool.com/reach

12 General information

Imported into the UK by

Festool UK Ltd
1 Anglo Saxon Way
Bury St Edmunds
IP30 9XH
Great Britain