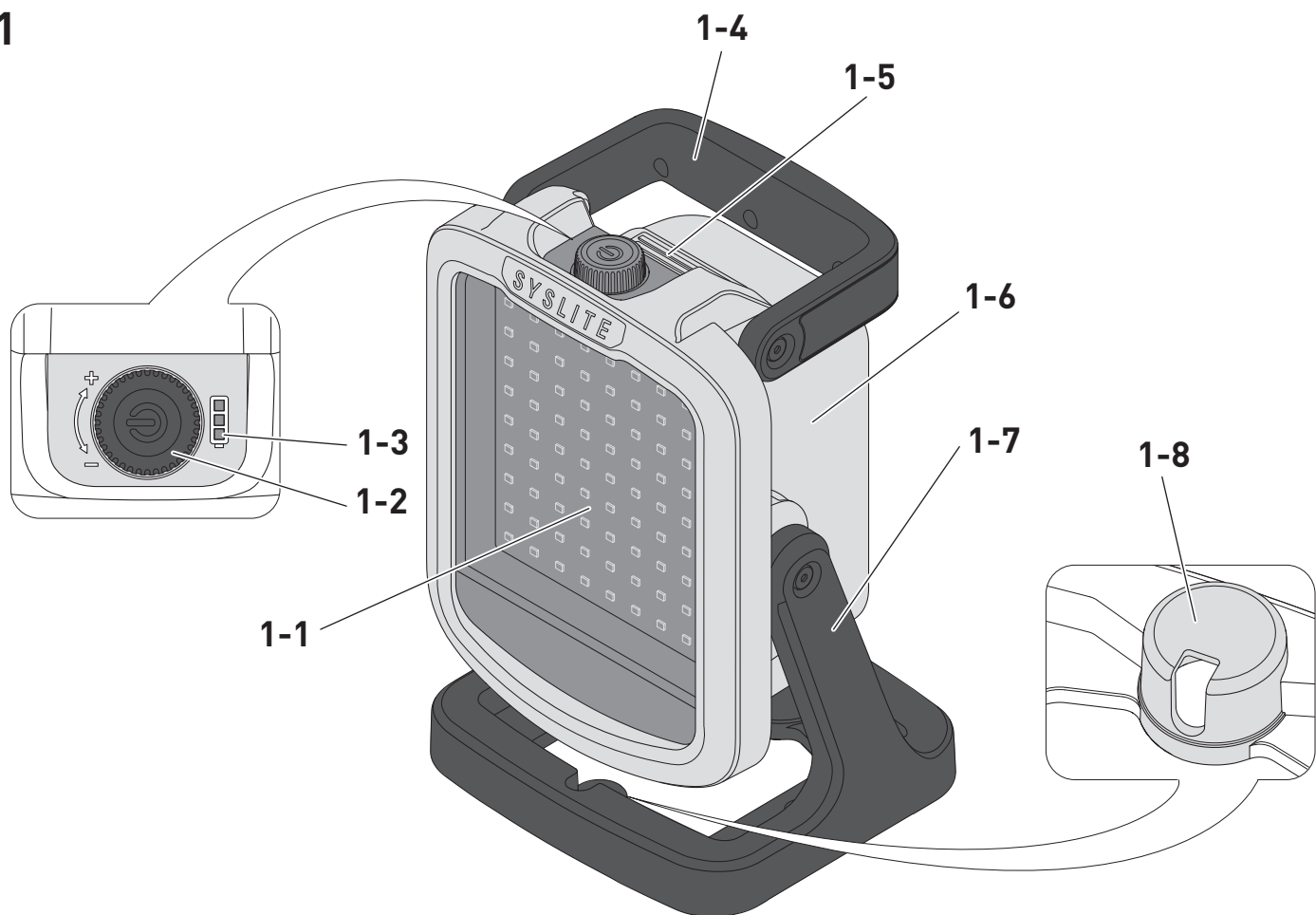


de	Originalbetriebsanleitung - Akku-Baustrahler	6	ko	사용 설명서 원본 - 충전 작업등	41
en	Original instructions – Cordless site light	9	lt	Originali naudojimo instrukcija – Akumuliatorinis statybinis prožektorius	44
fr	Notice d'utilisation d'origine – Projecteur de chantier sans fil	12	lv	Orīgināla lietošanas instrukcija – Akumulatora prožektors	47
es	Manual de instrucciones original – Proyector a batería	16	nb	Original bruksanvisning – Batteridrevet arbeidslampe	50
bg	Оригинални инструкции за употреба – акумулаторен прожектор	19	nl	Originele bedieningshandleiding – accu-bouwstraler	53
cs	Originální provozní návod – akumulátorové stavební světlo	23	pl	Oryginalna instrukcja obsługi – akumulatorowa lampa robocza	56
da	Original brugsanvisning – akku arbejdslampe	26	pt	Manual de instruções original – Luz de trabalho de bateria	60
et	Originaalkasutusjuhend – akuprožektor	29	ro	Traducere a manualului de utilizare original – Proiector cu acumulator pentru construcții	63
fi	Alkuperäiset käyttöohjeet – akkurakennustyoalaisin	32	sk	Originálny návod na používanie – Akumulátorové stavebné svietidlo	66
hu	Eredeti használati útmutató fordítása – Akkus munkalámpa	35	sv	Originalbruksanvisning – Batteri-driven bygglampa	69
it	Istruzioni d'uso originali – Faro da cantiere a batteria	38			

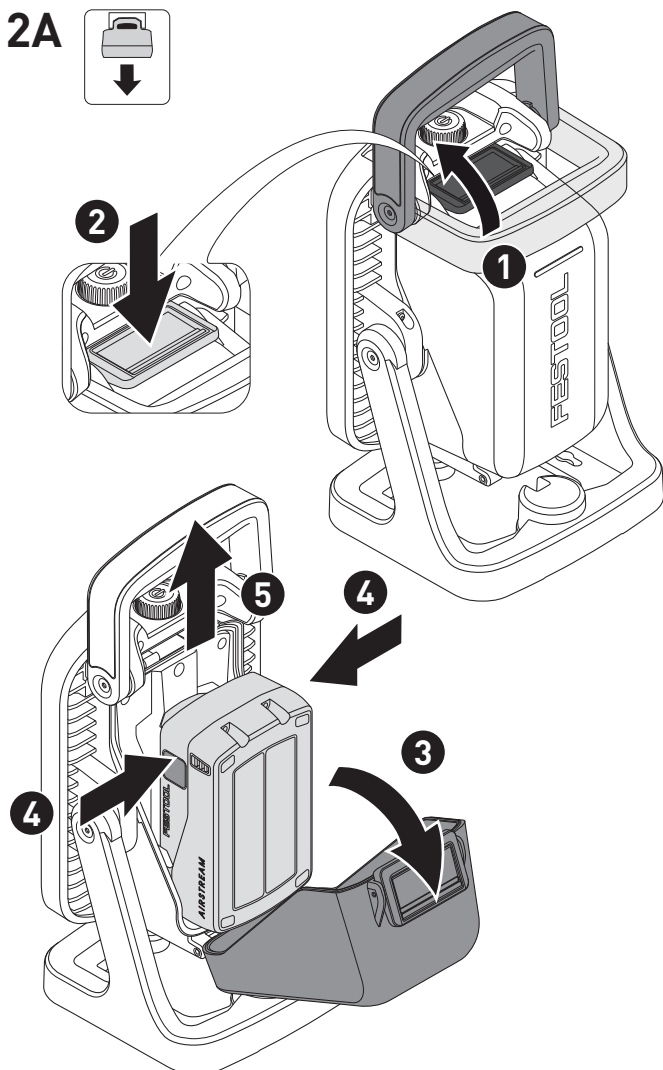
SYSLITE KBS C



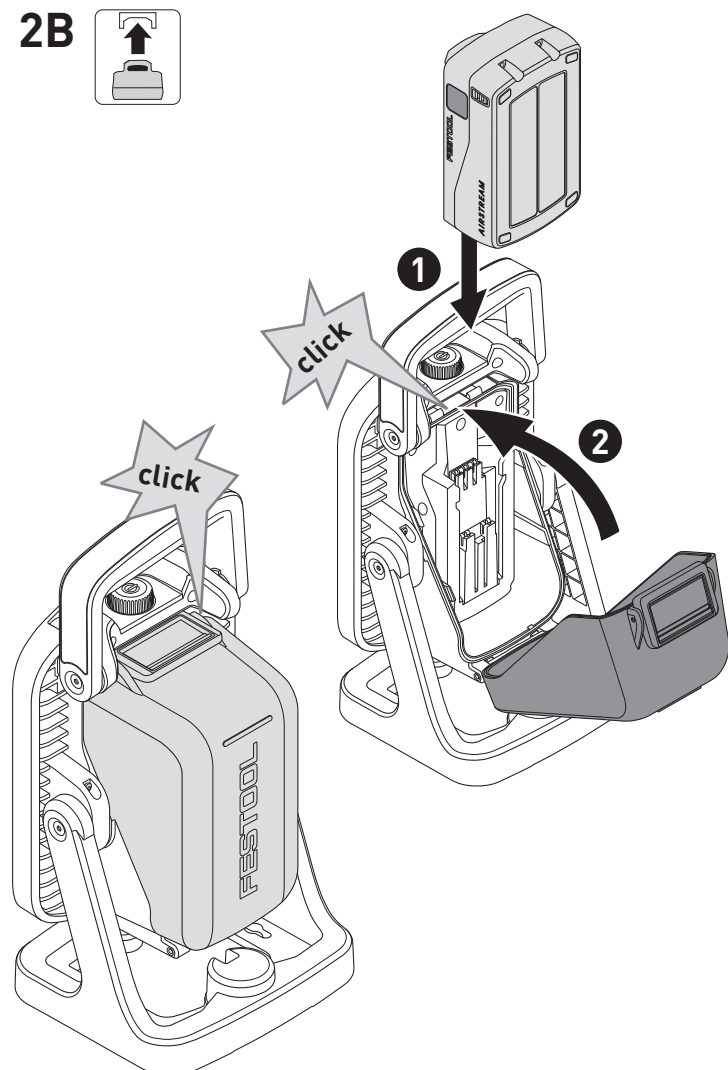
1



2A

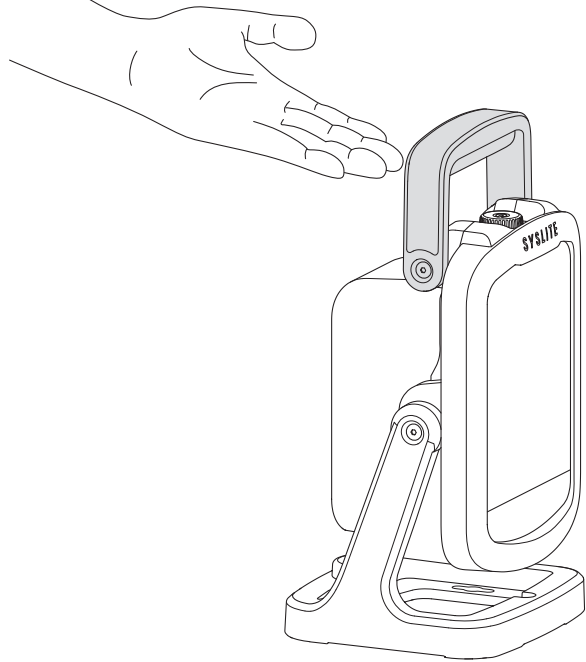
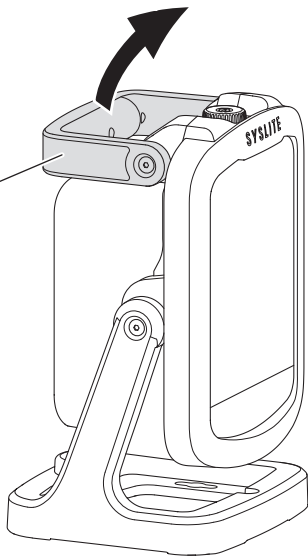


2B

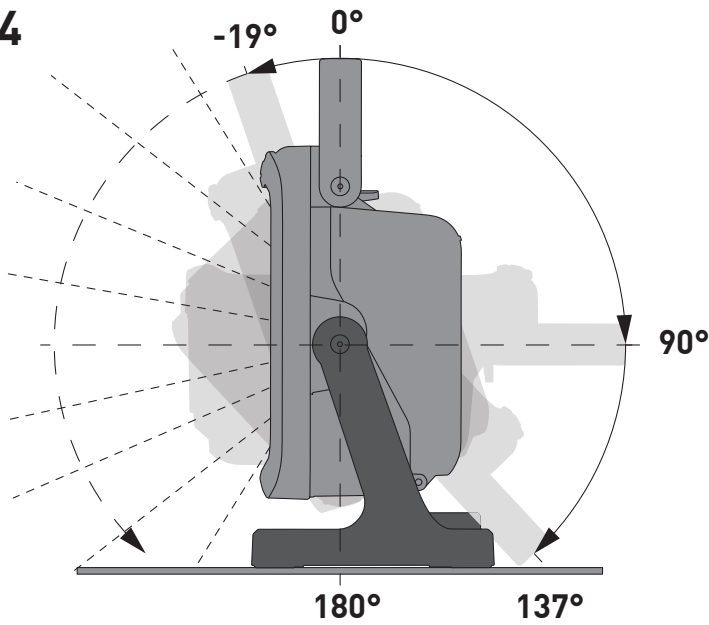


3

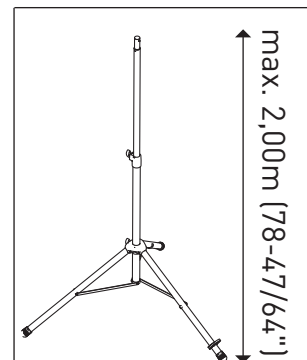
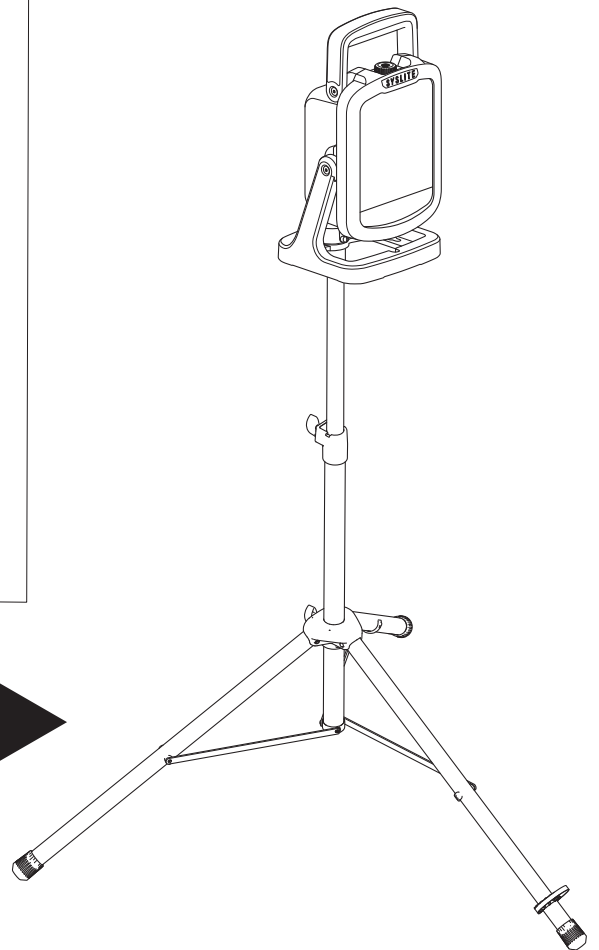
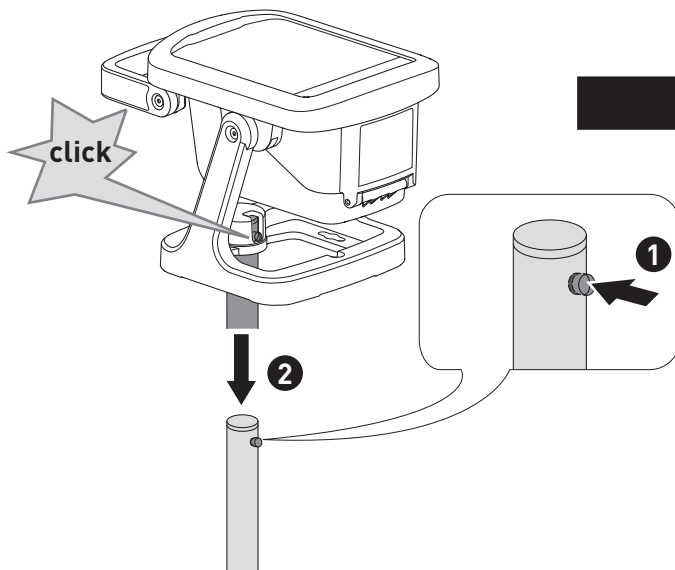
3-1



4

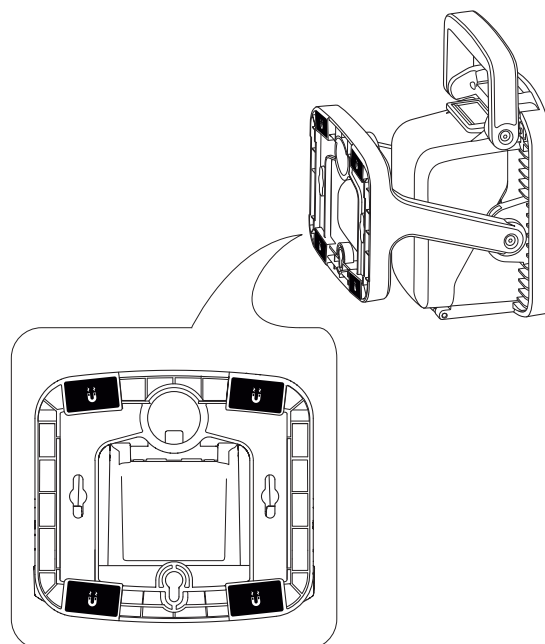
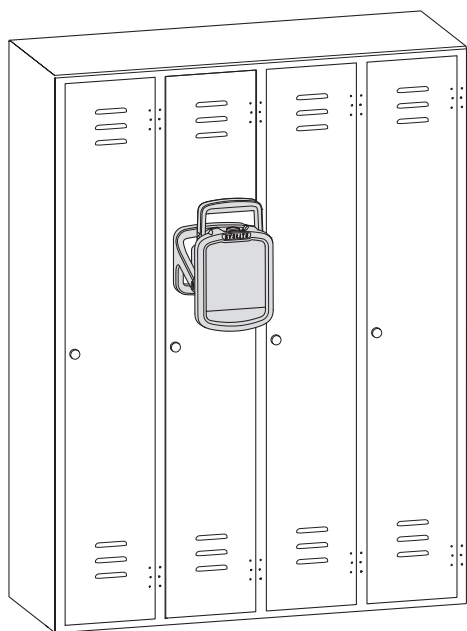


5

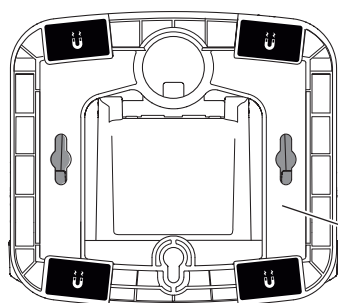


ST DUO 200

6

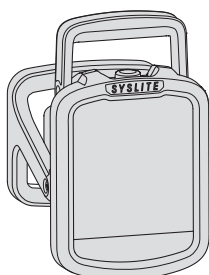
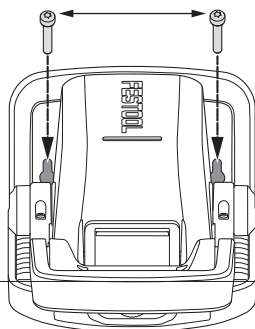


7A

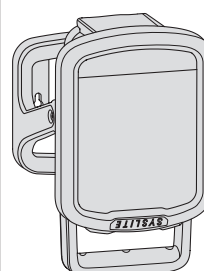
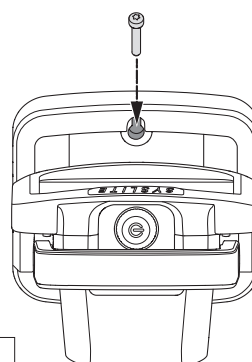
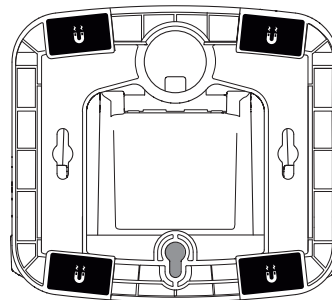
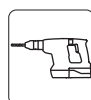


7-1

114,2 mm (4-31/64")



7B



1 Symbols



Warning of general danger



Read the operating manual and safety warnings.



Warning of magnetic field



Prohibited for persons with active medical implants.



Risk of crushing fingers and hands



Inserting the battery pack.



Remove the battery pack.



Safety class III



Do not dispose of it with domestic waste.



CE conformity marking



UKCA marking: Confirms the conformity of the product with UK regulations.



Tip or advice

V

Volt

—
d.c

Direct current

W

Watt

ta

Maximum ambient temperature

°C

degree Celsius

°F

degree Fahrenheit

lm

Lumens

"

inch

kg

Kilogram

lb.

Pound

2 Safety warnings



WARNING! Read all safety warnings and instructions. Failure to follow the safety warnings and instructions may result in electric shock, fire and/or serious injury.

Save all safety warnings and instructions for future reference.

Follow the operating manual for the charger and the battery pack.

- **Handle the device with care.** The device may generate heat which increases the risk of fire and explosions.
- **Never use the device in potentially explosive environments.**
- **Do not cover the device during operation.** Heat accumulation could lead to burns and a risk of fire.
- **The light source can heat up during operation.** Do not touch the light source.
- **Warning of harmful light radiation. Do not stare into the light beam for long periods. Do not direct the light beam towards other people or animals.** In accordance with IEC/EN 62471 for „Photobiological safety of lamps and lamp systems“, the device is in the Exempt Risk Group (Risk Group 0 -> no photobiological hazard).
- **Do not use the device for illuminating the road.** The device is not approved for illuminating the road.
- **Only use the Festool battery packs intended for the device.** Using other battery packs poses a fire hazard and may cause personal injury.
- **Only use the device with the protective cover closed and locked in place.**
- **Risk of crushing when changing the battery pack or turning the device.** Keep your hands away from the danger zone.
- **Ensure stable footing or secure mounting when securing to a tripod or with a magnet.** In the event of unstable footing or insecure mounting, the device may fall and cause personal injuries or material damage.
- **The device is not a toy.** Keep the device away from children.
- Do not continue to use the device if it is damaged.

3 Intended use

The cordless site light is intended for portable, temporary illumination in in- and outdoor areas.

The device is **not** suitable for illuminating rooms in residential buildings.



The user is liable for improper or non-intended use.

4 Technical data

Cordless site light	KBS C
Rated voltage	18 V \equiv
Compatible battery packs	Festool BP 18 series
LED luminous flux	700 - 5.000 lm
Lighting duration at maximum luminosity	30 min/Ah*
Weight without battery pack	2.19 kg (4.8 lb)
Ambient temperature during operation	- 10 °C (14 °F) to + 40 °C (104 °F)
Protection class	IP 54

* Capacity of the battery pack (battery packs are not included in the scope of delivery).

5 Parts of the device / Functional description

- [1-1]** Light source
- [1-2]** On/off button / Rotary knob for adjusting the light intensity
- [1-3]** Capacity indicator
- [1-4]** Carrying handle
- [1-5]** Protective cover lock
- [1-6]** Protective cover
- [1-7]** Stand with magnetic underside
- [1-8]** Socket for the tripod

Accessories shown or described are not always included in the scope of delivery.

The specified illustrations appear at the beginning of the Operating Instructions.


6 Battery pack


Before using the battery pack, check that the battery interface is clean. Any contamination of

the battery interface may impair correct contact and lead to the contacts being damaged.

A faulty contact may result in the machine overheating or being damaged.

[2A] Remove the battery pack.

[2B]  Insert the battery pack – until it clicks into place.

 Further information about the battery pack with capacity indicator can be found in the corresponding operating manual.

7 Commissioning

7.1 Switch on/off

- To switch the device on and off, press and hold the on/off button **[1-2]**.
- ☑ The device starts with the lowest light intensity.
- Adjust the light intensity using the rotary knob **[1-2]**.

 Reaching the brightest or darkest light intensity is indicated by a single flash.

8 Operation

8.1 Charge level of the battery pack

If the bottom LED of the capacity indicator **[1-3]** flashes three times after switching on, the battery pack is empty and must be recharged. If the battery pack is low, the device goes into emergency mode with reduced light intensity after flashing three times and switches off after ten minutes.

8.2 Carrying handle [3]

Always carry the device with the carrying handle **[3-1]** fully opened. The carrying handle must not be used to hang up the device.

8.3 Setup options

Setup angle [4]

The device can be swiveled in both directions.

Setting up with tripod [5]

CAUTION! Use the device only with a Festool ST DUO 200 tripod. The total height of the tripod must not exceed 2.0 m (78-47/64"). Please follow the instructions contained in the operating manual for the tripod.

- Fold out the tripod to the limit stop.
- Attach the device.
- Turn the attached device until it clicks into place.

Attachment with magnets [6]



WARNING

The magnetic field can interfere with or destroy electronic or mechanical elements and magnetically sensitive devices.

- Keep the device away from electronic or mechanical elements and magnetically sensitive devices (e.g. active medical implants).

WARNING! Do not use magnets in locations where persons can get injured in the event of material failure. When attaching the magnet, check that the holding force is sufficient. If required, secure the lamp additionally with a rope against falling.



CAUTION! Fingers and hands may be crushed. Do not place your fingers and hands between the magnets and the magnetic surface.

Check the area at the magnetic surfaces before use and clean if necessary.

Do not attach to sensitive surfaces.

Attachment to the wall [7]

The stand [7-1] has three mounts for attaching the device to the wall using either the two outer mounts [7A] or the middle mount [7B].

- Screw the stand securely to the wall.

9 Service and maintenance

Customer service and repairs must only be carried out by the manufacturer or service workshops. You must only use **original Festool spare parts**.

Further information: www.festool.com/service



The light source on this device cannot be replaced. If the light source has reached the end of its service life, the entire device must be replaced.

- Clean the device with a soft, dry cloth to prevent damage. Do not use solvents.
- Keep the contacts on the device, charger and battery pack clean.

10 Accessories

You can find the PO numbers for accessories and tools under www.festool.com.

11 Environment



Do not dispose of the device in the household waste!

Recycle devices, accessories and packaging. Observe applicable national regulations.

Before disposal, users must remove discharged batteries, accumulators that are not enclosed by the device and lights that can be removed from the old device without causing damage, if these are present. The old batteries and rechargeable batteries can then be recycled systematically.

In accordance with the European Directive on waste electrical and electronic equipment and implementation in national law, used power tools must be collected separately and handed in for environmentally friendly recycling.

Information on collection points for proper disposal can be found at www.festool.co.uk/recycling.

Information on REACH: www.festool.co.uk/reach

12 General information

Festool GmbH hereby declares that KBS C complies with Directive 2014/53/EU.

The complete declaration of conformity is available at: www.festool.com/declaration-of-conformity

Imported into the UK by

Festool UK Ltd
1 Anglo Saxon Way
Bury St Edmunds
IP30 9XH
Great Britain