

# Operating Instructions

## Special Vacuum Cleaner

flexCAT 112 Q

flexCAT 116 Q



flexCAT 112 Q



flexCAT 116 Q

**FLEXCAT-SERIES**

## Imprint

### Product identification

Special Vacuum Cleaner	Item number
flexCAT 112 Q	7003135
flexCAT 116 Q	7003140

### Manufacturer

Stürmer Maschinen GmbH  
Dr.-Robert-Pfleger-Str. 26  
D-96103 Hallstadt

Fax: 0049 (0) 951 96555 - 55  
E-Mail: [info@cleancraft.de](mailto:info@cleancraft.de)  
Internet: [www.cleancraft.de](http://www.cleancraft.de)

### Indications regarding the operating instructions

Original instructions

Edition: 09.01.2020  
Version: 1.04  
Language: English

Author: ES

### Indications regarding the copyright

Copyright © 2020 Stürmer Maschinen GmbH, Hallstadt, Germany.

The contents of these operating instructions are the sole property of the company Stürmer.  
Passing on as well as copying of this document, the use and distribution of its content are prohibited if not explicitly permitted. Contraventions are liable to compensation.

Subject to technical modifications and error.

## Content

<b>1 Introduction .....</b>	<b>3</b>
1.1 Copyright.....	3
1.2 Customer service.....	3
1.3 Limitation of liability .....	3
<b>2 Safety.....</b>	<b>3</b>
2.1 Symbol explanation .....	3
2.2 Obligations of the operating company .....	4
2.3 Requirements to staff.....	5
2.4 Personal protective equipment.....	5
2.5 General safety regulations.....	5
2.6 Safety labels on the vacuum cleaner .....	6
<b>3 Intended use .....</b>	<b>6</b>
3.1 Unintended use .....	7
3.2 Residual risks .....	7
<b>4 Technical Data .....</b>	<b>7</b>
4.1 Type plate.....	8
<b>5 Transport, packaging, storage.....</b>	<b>8</b>
5.1 Transport .....	8
5.2 Packaging.....	8
5.3 Storage .....	8
<b>6 Description of the device.....</b>	<b>8</b>
6.1 Assembly.....	10
<b>7 Scope of delivery.....</b>	<b>12</b>
<b>8 Operation .....</b>	<b>13</b>
8.1 Start and stopping.....	14
8.2 Controlling of the seal.....	14
<b>9 Care, maintenance and repair .....</b>	<b>14</b>
9.1 Care by cleaning .....	14
9.2 Maintenance and repair .....	14
<b>10 Disposal, recycling of used devices.....</b>	<b>15</b>
10.1 Decommissioning .....	15
10.2 Waste disposal of electric equipment .....	15
10.3 Disposal of lubricants .....	15
10.4 Disposal of the filter .....	15
<b>11 Malfunctions .....</b>	<b>15</b>
<b>12 Spare parts.....</b>	<b>16</b>
12.1 Ordering spare parts .....	16
12.2 Spare parts drawings .....	17
<b>13 EU-Declaration of Conformity .....</b>	<b>21</b>

## 1 Introduction

You have made a good choice by purchasing the CLEANCRAFT vacuum cleaner

**Read the operating manual thoroughly before commissioning the machine.**

It gives you information about the proper commissioning, intended use and safe and efficient operation and maintenance of your vacuum cleaner.

The operating manual is part of the vacuum cleaner package. Always keep this operating manual in the location where your vacuum cleaner is being operated. All local accident prevention regulations and general safety instructions for the operating range of your vacuum cleaner must also be complied with.

### 1.1 Copyright

The contents of these instructions are copyright. They may be used in conjunction with the operation of the vacuum cleaner. Any application beyond those described is not permitted without the written approval of Stürmer GmbH.

### 1.2 Customer service

Please contact your dealer if you have questions concerning your vacuum cleaner or if you need technical advice. They will help you with specialist information and expert advice.

**Germany:**

Stürmer Maschinen GmbH  
Dr.-Robert-Pfleger-Str. 26  
D-96103 Hallstadt

**Repair service:**

Fax: 0049 (0) 951 96555-111  
Email: [service@stuermer-maschinen.de](mailto:service@stuermer-maschinen.de)

**Spare part orders:**

Fax: 0049 (0) 951 96555-119  
Email: [ersatzteile@stuermer-maschinen.de](mailto:ersatzteile@stuermer-maschinen.de)

We are always interested in valuable experience and knowledge gained from using the application-which then could be shared and be valuable to develop our products even further.

## 1.3 Limitation of liability

All information and notes in these operating instructions were summarised while taking applicable standards and rules, the state-of-the-art technology and our long-term knowledge and experiences into consideration.

In the following cases the manufacturer is not liable for damages:

- Non-observance of the operating instructions,
- Inappropriate use
- Use of untrained staff,
- unauthorised modifications
- technical changes,
- Use of not allowed spare parts.

The actual scope of delivery may deviate from the explanations and presentations described here in case of special models, when using additional ordering options or due to latest technical modifications.

The obligations agreed in the delivery contract, the general terms and conditions as well as the delivery conditions of the manufacturer and the legal regulations at the time of the conclusion of the contract are applicable.

## 2 Safety

This section provides an overview of all important safety packages for the protection of operating personnel as well as for safe and fault-free operation. Other task-based safety notes are included in the paragraphs of the individual phases of life.

### 2.1 Symbol explanation

#### Safety instructions

The safety notes in these operating instructions are highlighted by symbols. The safety notes are introduced by signal words which express the concern of the risk.



#### **DANGER!**

This combination of symbol and signal words indicates an imminently dangerous situation which may lead to death or severe injury if not avoided.



#### **WARNING!**

This combination of symbol and signal words indicates a potentially dangerous situation which may lead to death or severe injury if not avoided.

**CAUTION!**

This combination of symbol and signal words indicates a potentially dangerous situation which may lead to slight or minor injury if not avoided.

**ATTENTION!**

This combination of symbol and signal words indicates a possibly dangerous situation which may lead to property and environmental damages if they are not avoided.

**NOTE!**

This combination of symbol and signal words indicates a potentially dangerous situation which may lead to material or environmental damage if not avoided.

**Tips and recommendations****Tips and recommendations**

This symbol highlights useful tips and recommendations as well as information for an efficient and trouble-free operation.

It is necessary to observe the safety notes written in these operating instructions in order to reduce the risk of personal injuries and damages to property.

**2.2 Obligations of the operating company****of the operator**

The operating company is the person who operates the vacuum cleaner for business or commercial reasons by herself, or leaves it to a third party for use or application, and who bears the legal product responsibility for the protection of the user, the staff or for third parties.

**Obligations of the operating company**

If the vacuum cleaner is used for commercial purposes, the operating company of the vacuum cleaner must comply with the legal working safety regulations. Therefore, the safety notes in this operating manual, as well as the safety, accident prevention and environment protection regulations applying for the area of application of the vacuum cleaner must be met. The following applies in particular:

- The operating company must be informed about the applying industrial safety regulations and further analyse hazards resulting from the special working conditions at the place of use of the vacuum cleaner. She must implement these in form of operating manuals for the operation of the vacuum cleaner.
- During the entire lifetime of the vacuum cleaner, the operating company must verify whether the operating manuals prepared by her correspond to the current status of the regulations, and must adapt these if necessary.
- The operating company must unambiguously regulate and determine the responsibilities for installation, operation, troubleshooting, maintenance and cleaning.
- The operating company must ensure that all persons who work with the vacuum cleaner, have read and understood this manual. Furthermore she must instruct the staff in regular intervals and inform them about the hazards.
- The operator must provide the necessary protective equipment to the staff and order the use of the necessary protective equipment in a binding way.

Furthermore the operating company is responsible to keep the vacuum cleaner always in a technically flawless state. Thus, the following applies:

- The operator must ensure that the maintenance intervals described in this manual are kept.
- The operator must have all safety devices checked regularly for their good working order and their integrity.

## 2.3 Requirements to staff

### Qualifications

The different tasks described in this manual represent different requirements to the qualification of the persons entrusted with these tasks.



#### **WARNING!**

#### **Danger in case of insufficient qualification of the staff!**

Insufficiently qualified persons cannot estimate the risks while using the vacuum cleaner and expose themselves and others to the danger of severe or lethal injuries.

- Have all works only performed by qualified persons.
- Keep insufficiently qualified persons out of the working area.

Only persons reliable working procedures can be expected from, are allowed to perform all works. Persons the responsiveness of which is affected by e. g. drugs, alcohol or medication, are not allowed to work with the machine.

The qualifications of the personnel for the different tasks are mentioned below:

### Operator

The operator is instructed by the operating company about the assigned tasks and possible risks in case of improper behaviour. Any tasks which need to be performed beyond the operation in the standard mode must only be performed by the operator if it is indicated in these instructions and if the operating company expressly commissioned the operator.

### Electrically qualified person

Electrically qualified person is due to their professional training, knowledge and experience as well as knowledge of the relevant standards and regulations, in a position to carry out work on the electrical systems and to independently recognize and avoid possible dangers.

### Qualified personnel

Due to their professional training, knowledge and experience as well as their knowledge of relevant regulations the specialist staff is able to perform the assigned tasks and to recognise and avoid any possible dangers themselves.

### Manufacturer

Certain works may only be performed by specialist personnel of the manufacturer. Other personnel is not authorized to perform these works. Please contact our customer service for the execution of all arising work.

## 2.4 Personal protective equipment

The personal protective equipment serves to protect persons against impairments of safety and health while working. The staff member has to wear personal protective equipment while performing different tasks on and with the machine which are indicated in the individual paragraphs of these instructions.

The personal protective equipment is explained in the following paragraph:



### **Protective gloves**

The protective gloves serve to protect the hands against sharp components as well as against friction, abrasions or deep injuries.



### **Safety boots**

Safety boots protect the feet from being crushed, falling parts and slipping over on slippery ground.



### **Protective clothes**

Protective clothes are made of a tightly fitted fabric without the protruding parts of low tear strength.

## 2.5 General safety regulations

### **Please note the following:**

Use the safety devices and fasten them securely. Never work without safety equipment and keep it in good working order.

- Keep the machine and your work environment clean at all times. Ensure sufficient illumination.
- The vacuum cleaner 's design must not be changed; the machine must not be used for work not intended by the manufacturer.
- Never work under the influence of illnesses that impair concentration, drugs, alcohol or medication.
- Do not use the mains cable to pull the plug out of the socket. Protect the cable against heat, oil and sharp edges.
- Malfunctions impair the safety, please this rectify immediately.
- Protect the vacuum cleaner against humidity (risk of short circuit!).
- Before using the vacuum cleaner make sure that no parts are damaged. Replace damaged parts immediately to avoid sources of danger!
- Never overload the vacuum cleaner! Working within the stated performance limits is better and safer.
- Use only genuine spare parts and accessories to avoid potential risks and risk of accident.

- The vacuum cleaner must not be used for the suction of water, oil or other liquids.
- Do not use the device at an altitude of 2000 m above sea level.
- Never use the vacuum cleaner without a filter or dirt container.
- Do not operate the vacuum cleaner with the wet hands.
- This device is not suitable for picking up dust in an environment where electrostatic discharges or sparks occur. This can be the cause of the damage to the electrical components and people.

**WARNING!**

Do not vacuum with the vacuum cleaner hot objects such as ashes or cigarettes!

There is a risk of fire!

**WARNING!**

Don't ever point the suction towards delicate parts of the body – of people or animals - such as eyes, ears, mouth, etc.

**WARNING!**

This device is not suitable for picking up health endangering dust, unless special authorised precautions are complied with

**WARNING!**

The vacuum cleaner shall not be used outdoors in wet conditions.

**WARNING!**

If the device is equipped with the additional plug, the power stated on the plug must not be exceeded. Failure to comply with this requirement may result to a fire, the personal injury or even death to the user.

Only use the parts supplied with the device or than, that are specified in the instructions. The use of other parts can impair the safety.

**WARNING!**

Never leave the running device unattended. Always disconnect the power plug from the power socket when not in use. Keep the device out of the reach of children or unauthorized persons.

**ATTENTION!**

When the device fall over, it is then recommended set the device up again before switching it off.

**WARNING!**

The power indicated on the additional plug must not be exceeded. Make sure that the operating voltage of the electrical device is the same as the supply voltage of the vacuum cleaner

The connection for the additional accessories may only be used for the extraction of dust.

Failure to comply with this requirement may result to a fire, the personal injury or even death to the user.

**WARNING!**

The device is not suitable for environments that are protected against electrostatic discharges

## 2.6 Safety labels on the vacuum cleaner

The following safety labels and instructions are attached to the vacuum cleaner (Fig. 1) and must be observed.



Fig. 1: 1-2 Mandatory sign | 3 Warning symbol: Warning of electrical voltage

If safety labels on the machine are damaged or missing, this can cause errors, personal injury and material damage. The safety symbols attached to the machine must not be removed. Damaged safety symbols must be replaced immediately.

As soon as the signs are not clearly visible and comprehensible at first glance, the machine must be stopped until new signs have been attached.

## 3 Intended use

The vacuum cleaner is exclusively intended for the suction of the dust and light dirt, but not for wet suction. The vacuum cleaner must not be operated in the potentially explosive environments.

The proper use also includes observing all indications in these operating instructions. Any use beyond the proper

use or any other use is regarded as misuse. Under no circumstances may personnel be lifted.

Stürmer Maschinen GmbH accepts no liability for any constructional or technical modifications carried out on the electric vacuum cleaner.

Any claims due to damages because of not intended use are excluded.


**WARNING!**

Any change on the vacuum cleaner is prohibited. The change may void the warranty, cause burns and personal injury, even fatal for the user. The manufacturer will not be liable for any damage that the results from failure to follow these instructions or from the misuse of the equipment to objects or persons.

### 3.1 Unintended use


**WARNING!**
**Dangers in case of unintended use!**

Unintended use of the vacuum cleaner can cause hazardous situations.

- Only operate the vacuum cleaner within the performance limits stated in the technical data.
- Do not bypass or disarm safety equipment.
- Only use the vacuum cleaner in technically perfect condition.
- Use only for the vacuuming of the dust or dry material.
- Never pick up the liquids!
- Only use the vacuum cleaner in the specified temperature range


**ATTENTION!**

The vacuum cleaner is not suitable to absorb dangerous dust. Do not vacuum any soot, flammable, explosive or poisonous substances and liquids. The maximum permissible temperature for absorbing substances is 40 °C / 104 °F.

- do not vacuum the aggressive cleaning agents, as they could damage the device.
- do not vacuum the materials, which can damage or clog the filter elements (e.g., powder, toner, gypsum, and other very small particle size substances).
- do not vacuum the water or other liquids!

### 3.2 Residual risks

Even if all safety instructions are observed, and the machine is put to its intended use, there are still residual risks, which are listed below:

Risk of injury of upper and lower limbs while equipment is operating.

## 4 Technical Data

Model	flexCAT 112 Q	flexCAT 116 Q
Length	400 mm	400 mm
Width/Depth	400 mm	400 mm
Height	330 mm	330 mm
Weight (Netto)	5,8 kg	5,8 kg
Max. output	840 W	700 W
Max. input rating main motor	900 W	870 W
Electrical connection	230 V	230 V
Phase	1	1
Mains frequency	50 Hz	50 Hz
Energy efficiency category	B	A
Vacuum cleaner type	dry	dry
Airflow	2633 l/min	3050 l/min
Tank volume	12 l	16 l
Tank material	Plastic	Plastic
Hose diameter	36 mm	36 mm
Hose length	2 m	2 m
Sound pressure level [dB(A)]	63	62
Cable length [m]	8,5	10
Filter surface	850 cm <sup>2</sup>	850 cm <sup>2</sup>
Number of motors	1	1
Output stages	1	1
Motor cooling	Bypass	Bypass

Hand-arm vibrations on the suction hose are less than 2,5 m/s<sup>2</sup> as recommended by ISO 5349-1



## 4.1 Type plate

<b>Trockensauger</b>		
Dry vacuum cleaner		
Type <b>flexCAT 112 Q</b>	Serial no.	
Item no. <b>7003135</b>	Year of manufacture	
Motor power <b>0,9 kW</b>	Power connection <b>230 V / 50 Hz</b>	
Tank volume <b>12 l</b>	Sound pressure level <b>63 dB(A)</b>	
Weight <b>5,8 kg</b>		

 Stürmer Maschinen GmbH  
Dr.-Robert-Pfleger-Str. 26  
96103 Hallstadt, Germany  
[www.cleancraft.de](http://www.cleancraft.de)

Fig. 2: Type plate flexCAT 112 Q

## 5 Transport, packaging, storage

### 5.1 Transport

Check the vacuum cleaner on delivery for any visible transportation damage. If you notice any damage to the device please report this immediately to the carrier or dealer.



#### NOTE!

The vacuum cleaner should be protected from humidity.

### 5.2 Packaging

All used packaging materials and packaging aids are recyclable and should be taken to a materials recycling depot to be disposed of.

The delivery packaging is made of cardboard, so please dispose carefully by having it chopped up and given to the recycling collection

The film is made of polyethylene (PE) and the cushioned parts of polystyrene (PS). Deliver these substances to a collection point for recyclable materials or to the waste disposal company which looks after your region.



#### WARNING!

#### Danger to life!

The packaging elements may pose potential hazards (e.g., plastic bags):

- Packaging material for children and persons who are unaware of their actions or keep animals inaccessible.

### 5.3 Storage

The vacuum cleaner should be stored in a dry, frost-free environment.

## 6 Description of the device

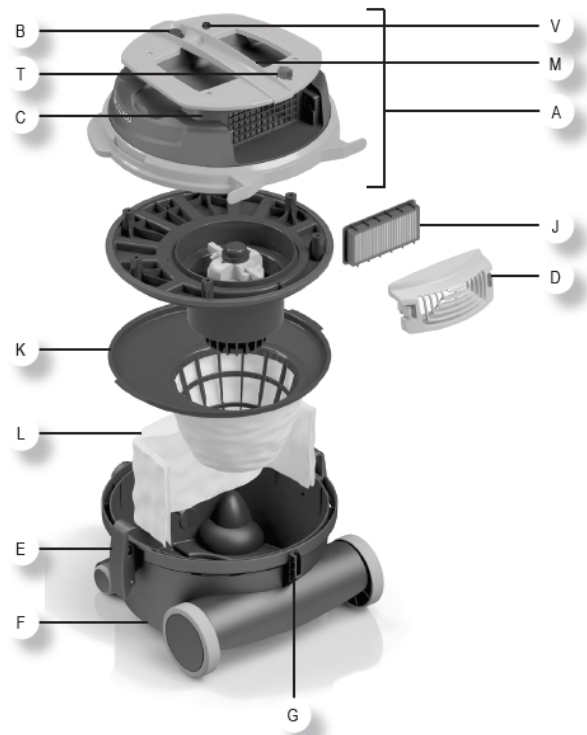


Fig. 3: Description of the device





Fig. 3: Description of the device

- A - Motor head
- B - Switch
- C - Cable holder
- D - Exhaust air grid
- E - Hooks
- F - Tank
- G - "T" slot
- H - Inlet
- I - Castor wheels
- J - Exhaust air filter
- K - Main filter to insert into the tank (filtering cartridge as alternative)
- L - Filter bag to apply on top of deflector.  
This filter does not exclude the use of polyester filter, that still has to be used.
- M - Handle with incorrect air regulation
- N - Flexible hose
- O - Hose
- P - Double use brush
- Q - Crevice nozzle
- R - Upholstery nozzle
- S - Round brush
- T - Speed regulator (optional)
- U - Electric floor brush additional socket (optional)
- V - Warning light
- W - Detachable power cord
- Z - Tool holder (optional)

### Warning light

The vacuum cleaner flexCAT 116 Q is equipped with the warning light (Fig. 4).

When the warning light activates means that the filtering bag (Pos. L, Fig. 3) is full.



Fig. 4: Warning light



### NOTE!

When the warning light activates, change the filter bag (Pos. L, Fig. 3) and clean the main filter (Pos. K, Fig. 3)



### ATTENTION!

Stop using your vacuum cleaner if the warning light is on. Overheating can take place, causing permanent damages to the engine.

While vacuuming soft surfaces like carpets, couches etc. the warning led can light even if the filter bag is not full. If you move the tool away from the surface and the light turns off, you can keep working.

### Speed regulator

The vacuum cleaner flexCAT 116 Q is equipped with speed regulator. The vacuum suction power can increase or lower with the speed regulator (Fig. 5).



Fig. 5: Speed regulator

### Detachable cable

The vacuum cleaner flexCAT 116 Q is equipped with a detachable cable. With the help of this function can detach the power cord (Fig. 6).



Fig. 6: Detachable cable

## 6.1 Assembly

### Assembly of the filter bag

To make the dry vacuum cleaner ready, please proceed as follows (Fig. 7):

- Step 1: Insert filter bag L (Fig. 3) on top of the deflector (Fig. 7 left).
- Step 2: Check that the appliance is equipped with main filter K (Fig. 3) and exhaust air filter J (Fig. 3) and that they are correctly assembled.
- Step 3: Insert the hose connector into the inlet H (Fig. 3 and fig.7 middle).
- Step 4: Insert the other side of the flexible hose into the wand M (Fig.7 right) and twist it to tighten the connection.



Fig. 7: Assembly of the filter bag

- Step 5: Attach the wand to the hoses O (Fig. 3) and the double use brush P (Fig. 3) or the desired tool.
- Step 6: Turn the vacuum cleaner on through the switch B (Fig. 3).

### Assembly of the main filter

Step 1: Loosen the side hooks and remove the upper part of the container.

Step2: Place the mail filter in the lower container part (Fig. 8 left).

Step 3: Adjustment the main filter correctly (Fig. 8 right).



Fig. 8: Assembly of the main filter

Step 4: Reinstall the upper part of the container

Make sure that the main filter is properly seated on the support grid (Fig. 9).

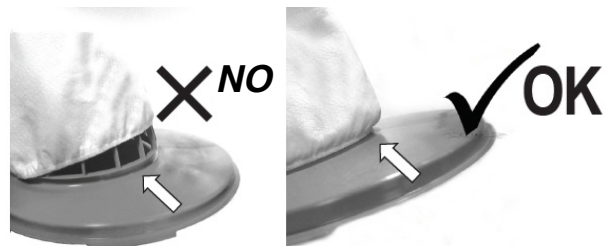


Fig. 9: Assembly of the main filter

### Replacing filtering cartridge

Step1: Loosen the side hooks. Remove the upper part of the container and put as shown in the Figure 10. Lift the filter a bit wide on a side (Fig. 10).

Step 2: Turn the complete upper part with the filter thorough 180° (Fig. 10).

Step 3: Lift the filter a bit on the other side (Fig.10).

Step 4: Check that the filter is a finger's breadth from the support surface (Fig. 10).

Step 5: If the filter is lifted around a finger's width, you can pull it off as shown in the Figure 10, pos. 6.

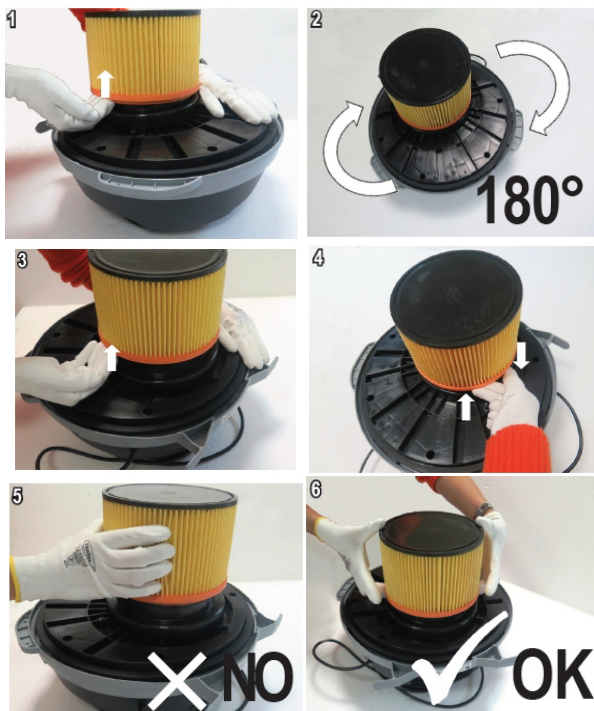


Fig. 10: Replacing filtering cartridge

### Replacement of exhaust air filtering cartridge

Step 1: Loosen the clamping of the filter cartridge holder by pressing the two levers for the spring locks 1 (Fig. 11).

Step 2: With the levers pressed, pull out the filter cartridge holder to the rear (Fig. 11 right).

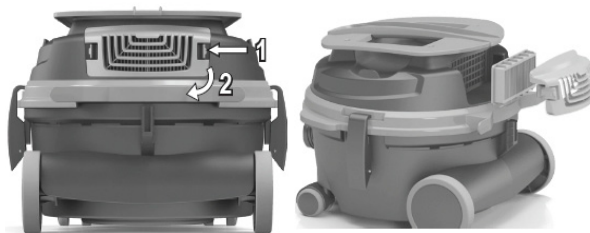


Fig. 11: Replacement of exhaust air filtering cartridge

Step 3: Replace the filter cartridge and slide the holder back into the container until the spring locks engage.

### Assembly of the tool holder (optional)

Step 1: Open the container by loosening the two hooks (Fig. 12 left).

Step 2: Lift off the cap of the container (Fig. 12 center) and push the tool holder into the groove provided on the lower container part (Fig. 5 right).



Fig. 12: Assembly of the tool holder (optional)

### Storage options on the Special Vacuum Cleaner

The vacuum cleaner offers the possibility of placing the tube on top of the container (Fig. 13 top left). The correct storage of the power cable is the wound state at the top of the container (Fig. 13, top right).

The double use brush can be clicked into the groove on the front of the container (Fig. 13 bottom left) or on the bottom of the container (Fig. 13 bottom right) for storage.

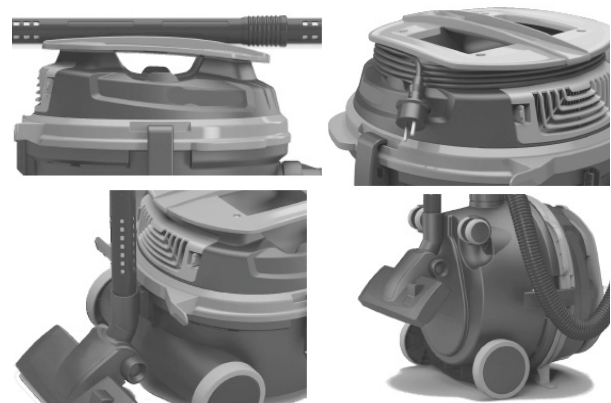


Fig. 13: Storage options



### WARNING!

#### Danger when opening the tank!!

Never open the container while the vacuum cleaner is in the operation!



### ATTENTION!

Check the vacuum cleaner before use for the following:

- Check the condition of the filters, replace the filter if necessary.
- Check the fill level of the dry vacuum. When the dry vacuum is completely full, empty it.
- Check the filter bag and replace if necessary.

## 7 Scope of delivery

The Special Vacuum Cleaner flexCAT 112 Q will be delivered with (Fig. 14):

**Item number: Designation:**

7010360	Polyester filter 850 cm <sup>2</sup> (Pos. 2)
7010361	Filter bag 11 l (Pos. 6)
7010362	Exhaust air filter (Pos. 4)
7010363	Hose 2 m Ø 36 mm with connections (Pos. 7)
7010364	Handle with incorrect air regulation Ø 36/32 mm (Pos. 1)
7010365	Suction tube 47 cm Ø 32 mm (Pos. 5)
7010366	Double use brush (Pos. 3)



Fig. 14: Scope of delivery flexCAT 112 Q

The Special Vacuum Cleaner flexCAT 116 Q will be delivered with (Fig. 15):

**Item number: Designation:**

7010360	Fabric filter 850 cm <sup>2</sup> (3)
7010361	Filter bag 11 l (6)
7010380	Exhaust air filter (Poly M43 1 Micron) (1)
7010363	Hose 2 m Ø 36 mm with connections (9)
7010364	Handle with incorrect air regulation Ø 36/32 mm (10)
7010372	Chrome suction tube Ø 32 mm (8)
7010366	Double use brush (2)
7010374	Crevice nozzle Ø 32 mm (7)
7010375	Round brush Ø 32 mm (5)
7010376	Upholstery nozzle Ø 32 mm (4)



Fig. 15: Scope of delivery flexCAT 116 Q

**Accessories for the flexCAT 112 Q (Fig.16):**

**Item number: Designation:**

7010300	Paper filter bag (1)
7010303	HEPA-Cartridge filter (2)
7010302	Poly-cartridge filter (3)
7010374	Crevice nozzle Ø 32 mm (4)
7010375	Round brush Ø 32 mm (5)
7010376	Upholstery nozzle Ø 32 mm (6)
7010381	Holder for the nozzles and suction tube (7)
7010372	Chrome suction tube Ø 32 mm (8)
7010382	Double use brush (9)
7010383	Pad holder for the double use brush (10)
7010384	Universal pad for the double use brush (11)
7010385	Parquet pad for the double use brush (12)



Fig. 16: Accessories flexCAT 112 Q



**Accessories for the flexCAT 116 Q (Fig. 17):**

Item number:	Designation:
7010386	Paper filter bag (1)
7010302	Poly-cartridge filter (2)
7010303	HEPA-cartridge filter (3)
7010362	Exhaust air filter (4)
7010381	Holder for the nozzles and suction tube (5)
7010372	Chrome suction tube 47 cmØ 32 mm (6)
7010373	Double use brush (7)
7010383	Pad holder for the double use brush (8)
7010384	Universal pad for the double use brush (9)
7010385	Parquet pad for the double use brush (10)



Fig. 17: Accessories flexCAT 116 Q

## 8 Operation



### **DANGER!** **Danger of potentially fatal electric shock.**

There is a risk of fatal injury from contact with live parts. Electrical components which are switched on can carry out uncontrolled movements and cause serious injuries.

- Disconnect the plug before starting adjustments to the vacuum cleaner.



### **WARNING!**

The power cable must be completely full free rolled before using the device.

Do not use the device with the rolled cable!

Do not use the plug or the device with wet hands!

Do not vacuum the objects that could damage the filter elements (for example a glass, metal, etc.)!



### **ATTENTION!**

To maintain the performance of the system, it is recommended clean the filter after each use and clean or replace the filter bag.



### **WARNING**

The device must be correctly installed before use. It must be checked that the filter elements are mounted correctly and that they function correctly.

The device should only be operated, mounted, repaired and transported on a stable, flat surface.

Before the unit is put into operation, make sure that the operating voltage indicated on the type plate is the same as the supply voltage available and that the power plug of the vacuum cleaner suits on the socket.



### **CAUTION!**

The device is only suitable for the use in the indoor!



### **WARNING!**

Before you handle the switched-off vacuum cleaner unplug the mains plug.

Regularly check the power cable and plug for damage (insulation, etc.). A damaged cable must be replaced before further use of the vacuum cleaner.

The replacement of a defective power cable must be carried out by the technical service or by qualified personnel.

When using the extension cord, make sure that it has the same cable dimension as the power cord of the device. Avoid getting the cable in contact with the liquids or conductive surfaces.



### **ATTENTION!**

Before the unit is put into operation, make sure that the operating voltage indicated on the type plate is the same as the supply voltage available.

## 8.1 Start and stopping

### Start

- Insert the power plug into a suitable power socket
- Press the ON/OFF switch.

### Stopping

- Turn off the device and disconnect the power cord
- By disconnecting always pull on the plug, never on the power cable.

## 8.2 Controlling of the seal

Over time, the quality of the seal may deteriorate as a result of the aging or damage. This leads to a decrease in the suction power. We recommend regularly checking the clamping hooks, flexible suction hoses and seals for a perfect function.

Clean all seals after completing work. The fouling can prevent a correct function and cause the damage.

Check that the edgings of the tank are not damaged.

## 9 Care, maintenance and repair



### **DANGER!**

**Danger of potentially fatal electric shock.**

There is a risk of fatal injury from contact with live parts. Electrical components which are switched on can carry out uncontrolled movements and cause serious injuries.

- Disconnect the plug before starting cleaning and maintenance.

### 9.1 Care by cleaning

The vacuum cleaner must always be kept in a clean condition.



### **Use protective gloves!**

Wear the suitable protective gloves by the cleaning to protect against injury from chips.

Keep the ventilation slots of the engine clean to ensure adequate cooling.



### **ATTENTION!**

Always empty the tank and clean all parts of the vacuum cleaner after the vacuuming.

Clean all plastics and paint surfaces on the vacuum cleaner with a lightly moistened cloth.

The cleaning must not be done by children, if they are not controlled by adults.

Maintenance and repair works must only be performed by specialists.

Use only original spare parts in case of a repair.

### 9.2 Maintenance and repair



### **WARNING!**

Maintenance and repair works must only be performed by specialists.

Use only original spare parts in case of a repair.

#### General maintenance information

- Check regular the seals, plastic units, filter and the switch for the damage. Replace this if necessary.

If the vacuum cleaner is not functioning properly, contact a specialised dealer or our customer service. Please find the contact data on chapter 1.2 Customer service.



## 10 Disposal, recycling of used devices

Please take care in your own interest and in the interest of the environment that all component parts of the machine are only disposed of in the intended and permitted way.

### 10.1 Decommissioning

Immediately decommission disused machines in order to avoid later misuse and endangering of the environment or personal safety.

Step 1: Eliminate all environmentally hazardous operating materials from the used device.

Step 2: If required, disassemble the machine into easy-to-handle and usable components and parts.

Step 3: Dispose of machine components and operating materials by the disposal channels provided.

### 10.2 Waste disposal of electric equipment

Please note that electrical devices contain a variety of recyclable materials as well as environmentally harmful components.

You contributes to that these components are disposed of separately and properly. In case of doubt, please contact your municipal waste disposal.

As necessary, a specialized waste disposal company can help be used for the treatment.

### 10.3 Disposal of lubricants

Remove any leaking, used or excessive grease at the lubricating points.

Disposal notes for used lubricants are available from the manufacturer of the lubricants. If necessary, request the product-specific data sheets.

### 10.4 Disposal of the filter

The filters are made of the environmentally friendly materials. You can dispose the filter in the normal household waste, as long as it contains no dirt prohibited in the household waste.

## 11 Malfunctions, their potential causes and remedies



### IMPORTANT!

If one of the following malfunctions occurs, immediately stop working with the device. Before you start troubleshooting, turn off the device and unplug the power plug. Failure to do so can lead to serious injury.

All repairs or replacement work may be performed by qualified and trained expert staff only.



### NOTE!

If you can not eliminate the problems with your vacuum cleaner yourself, then please contact your CLEANCRAFT dealer. Please mark down the following information from the vacuum cleaner or instruction manual, this will help you best with your problem.

- designation of the device
- serial number
- year of manufacture
- detailed fault description

Malfunction	Possible cause	Remedy
Machine not working.	<ol style="list-style-type: none"> <li>1. Power plug is not plugged in.</li> <li>2. Power supply cables defective.</li> <li>3. Switch defective</li> <li>4. Motor defective</li> </ol>	<ol style="list-style-type: none"> <li>1. Plug in the power plug.</li> <li>2. Call a service technician</li> <li>3. Call a service technician</li> <li>4. Call a service technician</li> </ol>
Suction decreases.	<ol style="list-style-type: none"> <li>1. Blockages in the suction nozzle, suction hose or filter.</li> <li>2. Seals are not tight.</li> </ol>	<ol style="list-style-type: none"> <li>1. Remove the blockages, clean the filter</li> <li>2. Clean the seals or replace the seals.</li> <li>3. Check the fit of the filters and the tank cap.</li> <li>4. Check the hose and connections for the tightness.</li> </ol>

## 12 Spare parts



### **DANGER!**

#### **Danger of injury by the use of wrong spare parts!**

Dangers may result for the user and damages as well as malfunctions may be caused by using wrong or damaged spare parts.

- Only use original spare parts of the manufacturer or spare parts admitted by the manufacturer.
- Always contact the manufacturer in case of uncertainties.



### **Tips and recommendations**

The manufacturer's warranty will become null and void if non-permissible spare parts are used

### 12.1 Ordering spare parts

The spare parts may be purchased with the authorised dealer or directly with the manufacturer. Please find the corresponding contact data in Chapter 1.2 Customer service.

Indicate the following basic information for requests or orders of spare parts:

- Type of device
- Item No.
- Position No.
- Year of construction:
- Quantity
- Required mode of dispatch (mail, freight, sea, air, express)
- Address of dispatch

Spare part orders which do not include the above indications may not be taken into consideration. If the indications regarding the mode of dispatch are missing, the product is dispatched at the discretion of the supplier.

You will find information regarding the device type, item No. and year of manufacture on the type plate fixed to the vacuum cleaner.

### **Example**

A covering for the vacuum cleaner flexCAT 112 Q must be ordered. The covering is identified in the spare parts drawing with the position number 2.

When ordering spare parts, send a copy of the spare parts drawing with marked component (covering) and marked position number (2) to the authorized dealer or to the spare parts department and provide the following information:

Type of device: **Special Vacuum Cleaner**  
**flexCAT 112 Q**

Item number: **7003135**

Position No.: **2**

#### **The item number of your machine:**

Special Vacuum Cleaner flexCAT 112 Q: 7003135

Special Vacuum Cleaner flexCAT 116 Q: 7003140

## 12.2 Spare parts drawings

In case of service, the following drawing shall help to identify the necessary spare parts. If necessary, send a copy of the parts drawing with the marked components to your authorised dealer.

### Spare parts drawings flexCAT 112 Q

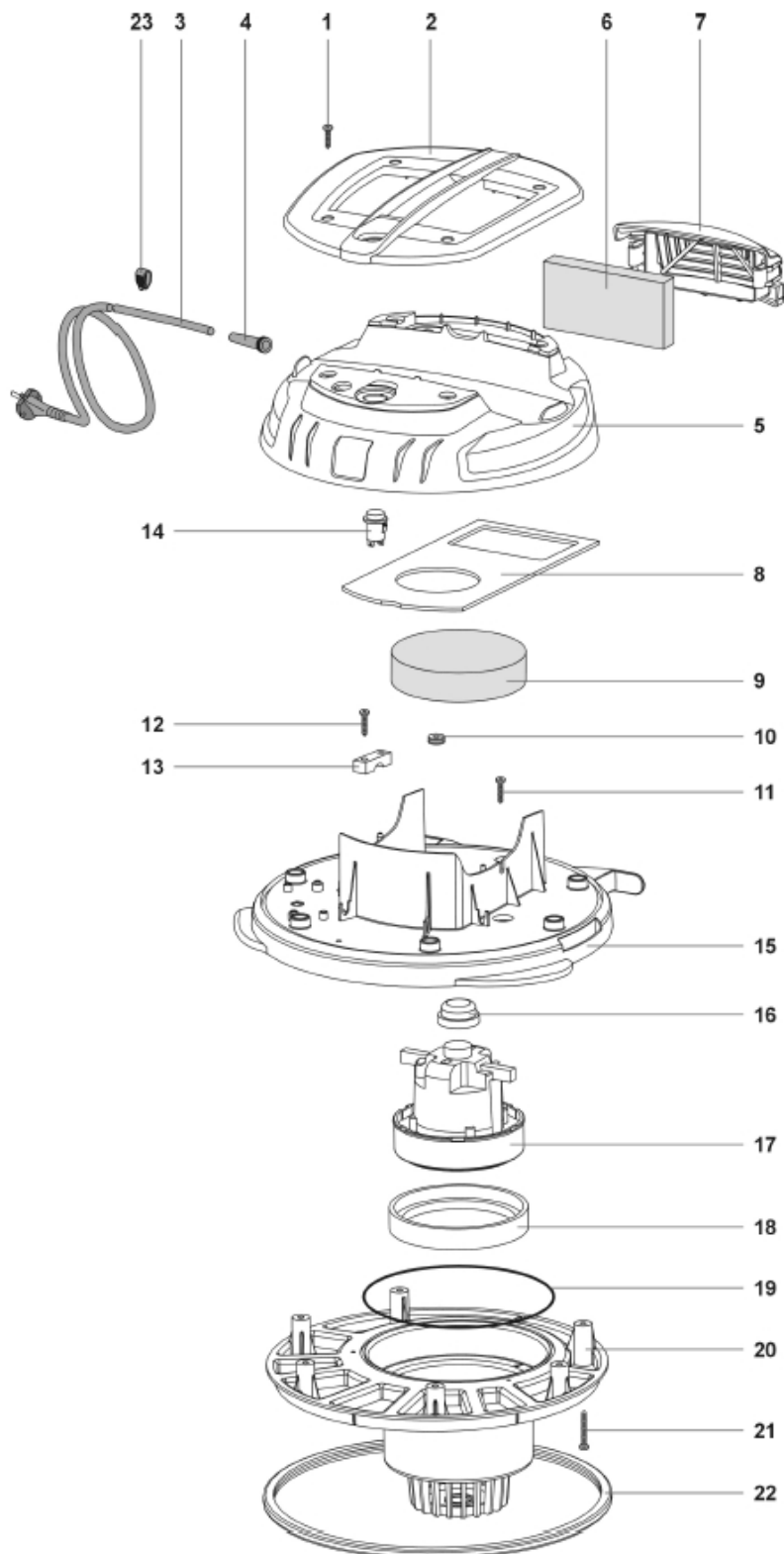


Fig. 18: Spare parts drawing 1, head, flexCAT 112 Q

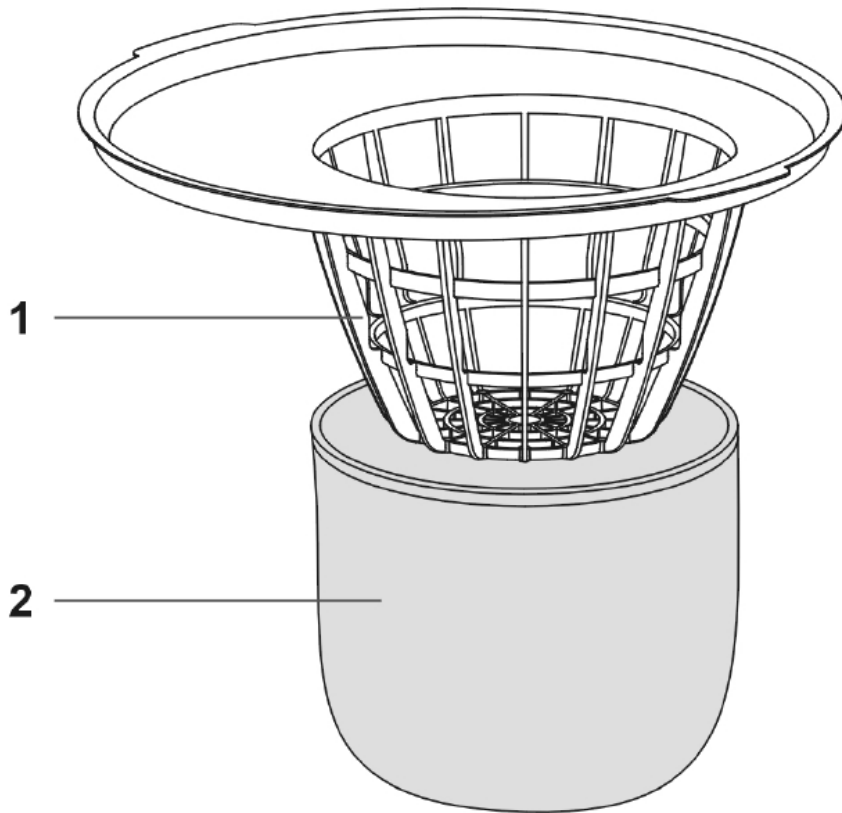


Fig. 19: Spare parts drawing 2, main filter flexCAT 112 Q

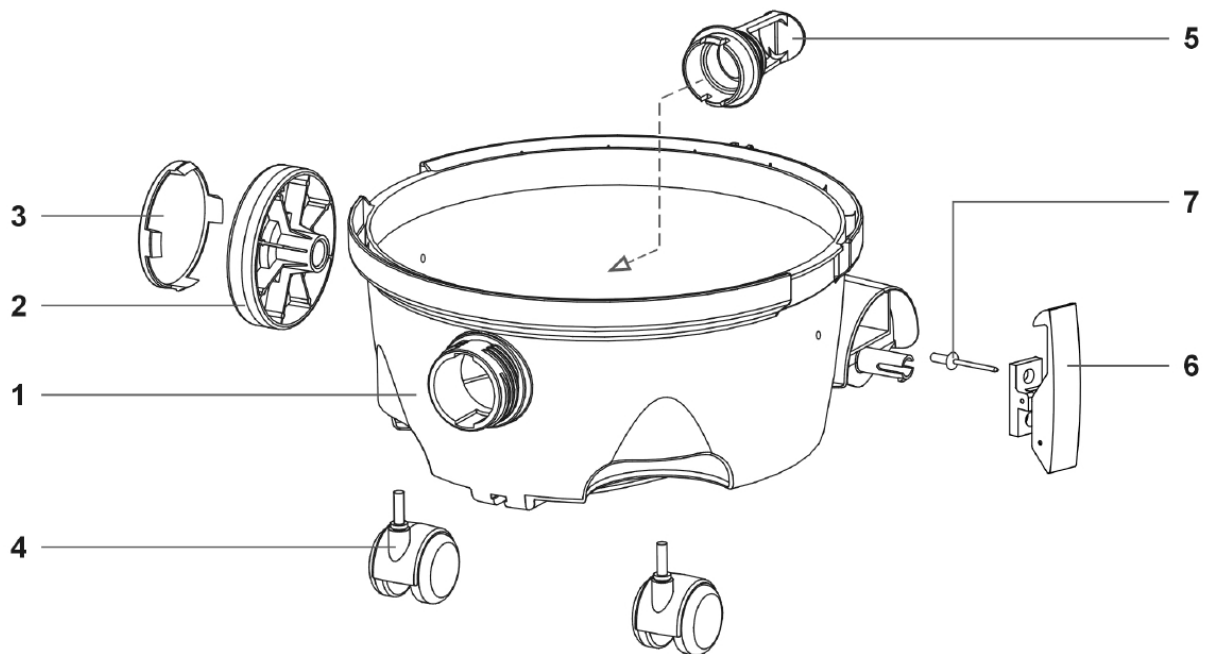


Fig. 20: Spare parts drawing 3, base frame, flexCAT 112 Q

Spare parts drawings flexCAT 116 Q

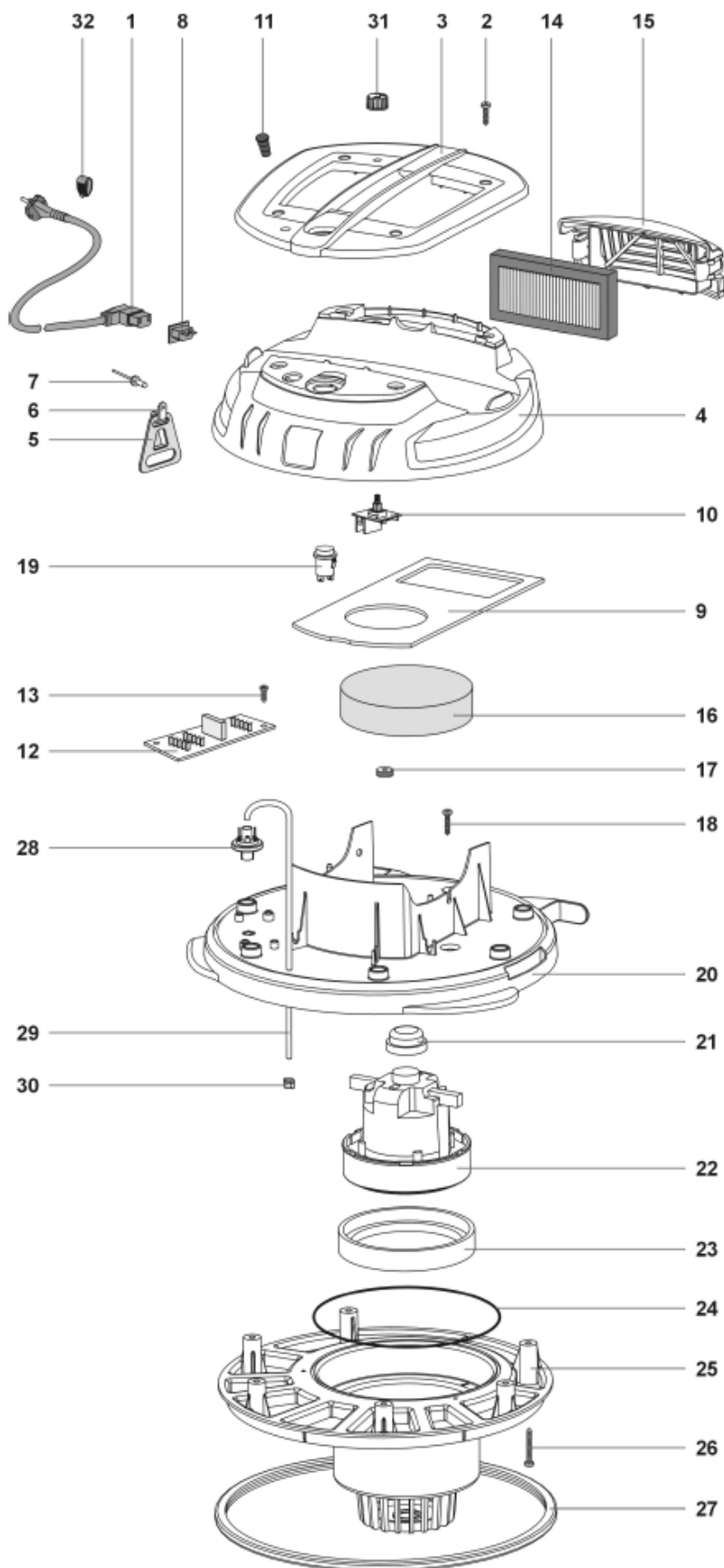


Fig. 21: Spare parts drawing 1, head, flexCAT 116 Q

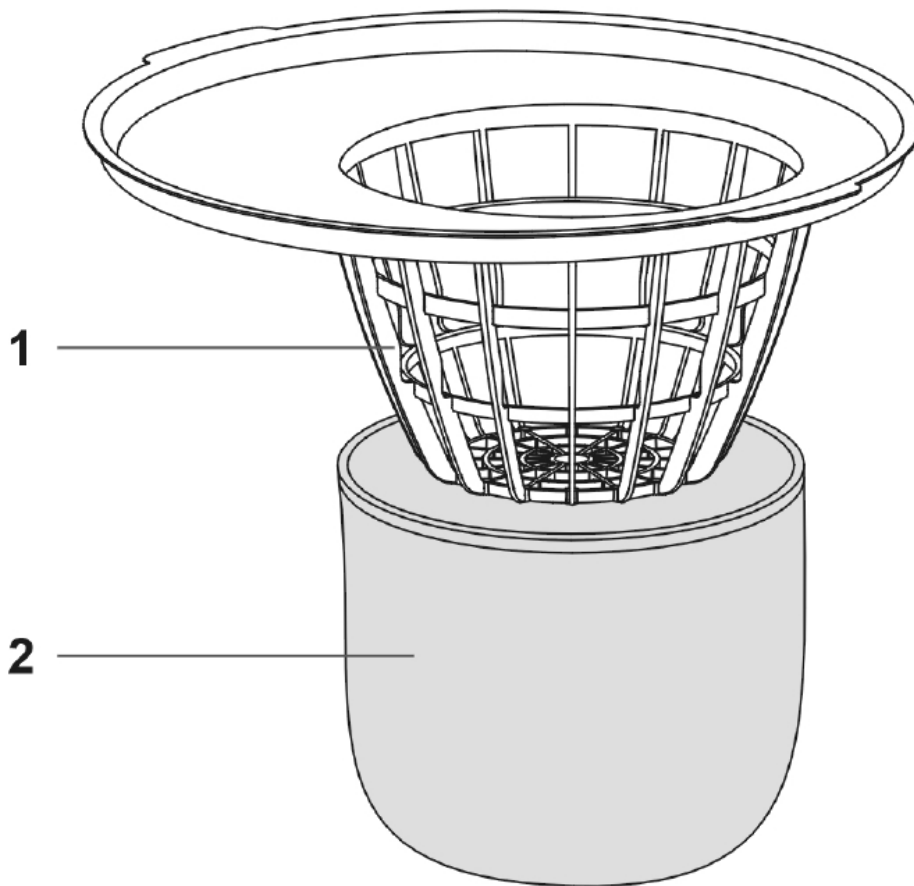


Fig. 22: Spare parts drawing 2, main filter, flexCAT 116 Q

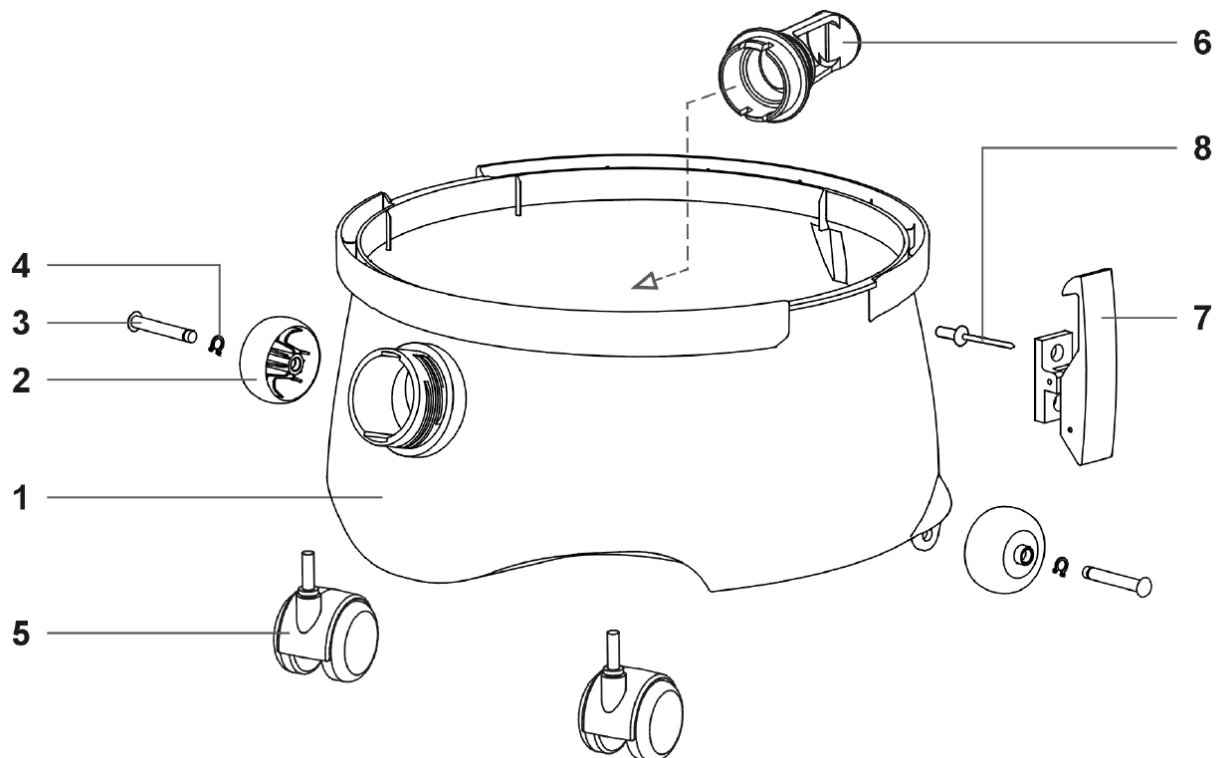


Fig. 23: Spare parts drawing 3, base frame, flexCAT 116 Q



## 13 EU-Declaration of Conformity

According to Machinery Directive 2006/42/EC, Annex II 1.A

**Manufacturer /distributor:** Stürmer Maschinen GmbH  
Dr.-Robert-Pfleger-Str. 26  
D-96103 Hallstadt

hereby declares that the following product

**Product group:** Cleancraft® Sauggeräte

**Type of machine:** Special Vacuum Cleaner

**Designation of the machine\*:** **Item number:**

☐ flexCAT 112 Q 7003135

☐ flexCAT 116 Q 7003140

**Serial number\*:** \_\_\_\_\_

**Year of manufacture\*:** 20\_\_\_\_

\*please fill in according to the information on the type plate

complies with all relevant provisions of the above mentioned directive as well as the other applied directives (below) - including their applicable modifications at the time of the declaration.

**Relevant EU Directives:** 2011/65/EU RoHS  
2014/30/EU EMC-Directive

**Following standards where applied:**

DIN EN 60335-1:2012-10	Household and similar electrical appliances – Safety - Part 1: General requirements
DIN EN 60335-2-69:2015-07	Household and similar electrical appliances - Safety - Part 2-69: Particular requirements for wet and dry vacuum cleaners, including power brush, for commercial use
DIN EN 55014-1:2018-08	Electromagnetic compatibility – Requirements for household appliances, electric tools and similar apparatus – Part 1 Emission
DIN EN 55014-2:2016-01	Electromagnetic compatibility – Requirements for household appliances, electric tools and similar apparatus – Part 2 Immunity
DIN EN 61000-3-2:2015-03	Electromagnetic compatibility (EMC) - Part 3-2: Limits
DIN EN 61000-3-3:2014-03	Electromagnetic compatibility (EMC) - Part 3-3: Limits - Limitation of voltage changes, voltage fluctuations and flicker in public low-voltage supply systems, for equipment with rated current

**Responsible for documentation:** Kilian Stürmer, Stürmer Maschinen GmbH,  
Dr.-Robert-Pfleger-Str. 26, D-96103 Hallstadt

Hallstadt, 13.04.2016



Kilian Stürmer  
CEO, Director



