

Instruction Manual

_____ Dry Vacuum Cleaner

_____ dryCAT 16 L - Class



dryCAT 16 L - Class

DRYCAT-SERIES

Imprint

Product identification

Dry Vacuum Cleaner	Item number
dryCAT 16 L - Class	7002116

Manufacturer

Stürmer Maschinen GmbH
Dr.-Robert-Pfleger-Str. 26
D-96103 Hallstadt

Fax: 0049 (0) 951 96555 - 55
E-Mail: info@cleancraft.de
Internet: www.cleancraft.de

Indications regarding the operating instructions

Original Instructions

Publication: 29.03.2021
Version: 1.02
Language: English
Author: RL

Indications regarding the copyright

Copyright © 2021 Stürmer Maschinen GmbH, Hallstadt, Germany.

The contents of these operating instructions are the sole property of the company Stürmer. Passing on as well as copying of this document, the use and distribution of its content are prohibited if not explicitly permitted. Contraventions are liable to compensation.

Subject to technical modifications and error.

Contents

1 Introduction	3
1.1 Copyright	3
1.2 Customer service	3
1.3 Limitation of liability	3
2 Safety	3
2.1 Symbol explanation	3
2.2 Obligations of the operating company	4
2.3 Requirements to staff	4
2.4 Personal protective equipment	5
2.5 General safety regulations	5
2.6 Safety labels	6
3 Intended use	7
3.1 Misuse	7
4 Technical Data	7
4.1 Type plate	7
5 Transport, packaging, storage	8
5.1 Transport	8
5.2 Packaging	8
5.3 Storage	8
6 Description of the device	8
6.1 Scope of delivery	9
6.2 Accessories	9
7 Assembly	9
8 Operation	10
8.1 Start and Stop	11
8.2 Operating instructions	11
8.2.1 Suction and blowing function	11
8.2.2 Air regulation	11
8.2.3 Filter cleaning system	11
8.3 Seal inspection	11
9 Care, maintenance and repair	12
9.1 Care by cleaning	12
9.2 Maintenance and repair	12
9.3 Replacing the filter	12
9.3.1 Cleaning the filter	12
10 Disposal, recycling of used devices	13
10.1 Decommission	13
10.2 Disposal of electrical equipment	13
10.3 Disposal of lubricants	13
10.4 Disposal via municipal collection points	13
11 Troubleshooting	14
12 Spare parts drawing	15
12.1 Ordering spare parts	15
12.2 Spare parts drawing	16
13 Electrical circuit diagram	16
14 EC-Declaration of Conformity	17

1 Introduction

You have made a good choice by purchasing the CLEANCRAFT dry vacuum cleaner.

Read the operating manual thoroughly before commissioning the machine.

It gives you information about the proper commissioning, intended use and safe and efficient operation and maintenance of your dry vacuum cleaner.

The operating manual is part of the vacuum cleaner package. Always keep this operating manual in the location where your dry vacuum cleaner is being operated. All local accident prevention regulations and general safety instructions for the operating range of your vacuum cleaner must also be complied with.

1.1 Copyright

The contents of these instructions are copyright. They may be used in conjunction with the operation of the vacuum cleaner. Any application beyond those described is not permitted without the written approval of Stürmer Maschinen GmbH.

For the protection of our products, we shall register trademark, patent and design rights, as this is possible in individual cases. We strongly oppose any infringement of our intellectual property.

1.2 Customer service

Please contact your dealer if you have questions concerning your dry vacuum cleaner or if you need technical advice. They will help you with specialist information and expert advice.

Germany:

Stürmer Maschinen GmbH
Dr.-Robert-Pfleger-Str. 26
D-96103 Hallstadt

Repair service:

Fax: 0049 (0) 951 96555-111
E-Mail: service@stuermer-maschinen.de
Internet: www.cleancraft.de

Spare part orders:

Fax: 0049 (0) 951 96555-119
E-Mail: ersatzteile@stuermer-maschinen.de

We are always interested in valuable experience and knowledge gained from using the application which then could be shared and be valuable to develop our products even further.

1.3 Limitation of liability

All information and notes in these operating instructions were summarised while taking applicable standards and rules, the state-of-the-art technology and our long-term knowledge and experiences into consideration.

In the following cases the manufacturer is not liable for damages:

- Non-observance of the operating instructions,
- Inappropriate use
- Use of untrained staff,
- Unauthorised modifications
- Technical changes,
- Use of not allowed spare parts.

The actual scope of delivery may deviate from the explanations and presentations described here in case of special models, when using additional ordering options or due to latest technical modifications.

The obligations agreed in the delivery contract, the general terms and conditions as well as the delivery conditions of the manufacturer and the legal regulations at the time of the conclusion of the contract are applicable.

2 Safety

This section provides an overview of all important safety packages for the protection of operating personnel as well as for safe and fault-free operation. Other task based safety notes are included in the paragraphs of the individual phases of life.

2.1 Symbol explanation

Safety instructions

The safety notes in these operating instructions are highlighted by symbols. The safety notes are introduced by signal words which express the concern of the risk.



DANGER!

This combination of symbol and signal words indicates an imminently dangerous situation which may lead to death or severe injury if not avoided.



WARNING!

This combination of symbol and signal words indicates a potentially dangerous situation which may lead to death or severe injury if not avoided.

**CAUTION!**

This combination of symbol and signal words indicates a potentially dangerous situation which may lead to slight or minor injury if not avoided.

**ATTENTION!**

This combination of symbol and signal words indicates a possibly dangerous situation which may lead to property and environmental damages if they are not avoided.

**NOTE!**

This combination of symbol and signal words indicates a potentially dangerous situation which may lead to material or environmental damage if not avoided.

Tips and recommendations**Tips and recommendations**

This symbol highlights useful tips and recommendations as well as information for an efficient and trouble-free operation.

It is necessary to observe the safety notes written in these operating instructions in order to reduce the risk of personal injuries and damages to property.

2.2 Obligations of the operating company

The operating company is the person who operates the vacuum cleaner for business or commercial reasons by herself, or leaves it to a third party for use or application, and who bears the legal product responsibility for the protection of the user, the staff or for third parties.

Obligations of the operating company:

If the vacuum cleaner is used for commercial purposes, the operating company of the vacuum cleaner must comply with the legal working safety regulations. Therefore, the safety notes in this operating manual, as well as the safety, accident prevention and environment protection regulations applying for the area of application of the vacuum cleaner must be met. The following applies in particular:

During the entire lifetime the vacuum cleaner, the operating company must verify whether the operating manuals prepared by her correspond to the current status of the regulations, and must adapt these if necessary.

- The operating company must be informed about the applying industrial safety regulations and further analyse hazards resulting from the special working conditions at the place of use of the vacuum cleaner. She must implement these in form of operating manuals for the operation of the vacuum cleaner.
- The operating company must unambiguously regulate and determine the responsibilities for installation, operation, troubleshooting, maintenance and cleaning.
- The operating company must ensure that all persons who work with the vacuum cleaner, have read and understood this manual. Furthermore she must instruct the staff in regular intervals and inform them about the hazards.
- The operator must provide the necessary protective equipment to the staff and order the use of the necessary protective equipment in a binding way.

Furthermore the operating company is responsible to keep the vacuum cleaner always in a technically flawless state. Thus, the following applies:

- The operator must ensure that the maintenance intervals described in this manual are kept.
- The operator must have all safety devices checked regularly for their good working order and their integrity.

2.3 Requirements to staff

The different tasks described in this manual represent different requirements to the qualification of the persons entrusted with these tasks.

**WARNING!****Danger in case of insufficient qualification of the staff!**

Insufficiently qualified persons cannot estimate the risks while using the vacuum cleaner and expose themselves and others to the danger of severe or lethal injuries.

- Have all works only performed by qualified persons.
- Keep insufficiently qualified persons out of the working area.

Only persons reliable working procedures can be expected from, are allowed to perform all works. Persons the responsiveness of which is affected by e. g. drugs, alcohol or medication, are not allowed to work with the machine. The qualifications of the personnel for the different tasks are mentioned below:

Operator:

The operator is instructed by the operating company about the assigned tasks and possible risks in case of improper behaviour. Any tasks which need to be performed beyond the operation in the standard mode must only be performed by the operator if it is indicated in these instructions and if the operating company expressly commissioned the operator.

Electrically qualified person:

Electrically qualified person is due to their professional training, knowledge and experience as well as knowledge of the relevant standards and regulations, in a position to carry out work on the electrical systems and to independently recognize and avoid possible dangers.

Qualified personnel:

Due to their professional training, knowledge and experience as well as their knowledge of relevant regulations the specialist staff is able to perform the assigned tasks and to recognise and avoid any possible dangers themselves.

Manufacturer:

Certain works may only be performed by specialist personnel of the manufacturer. Other personnel is not authorized to perform these works. Please contact our customer service for the execution of all arising work.

2.4 Personal protective equipment

The personal protective equipment serves to protect persons against impairments of safety and health while working. The staff member has to wear personal protective equipment while performing different tasks on and with the machine which are indicated in the individual paragraphs of these instructions.

The personal protective equipment is explained in the following paragraph:



Protective gloves

The protective gloves serve to protect the hands against sharp components as well as against friction, abrasions or deep injuries.



Safety boots

Safety boots protect the feet from being crushed, falling parts and slipping over on slippery ground.



Protective clothes

Protective clothes are made of a tightly fitted fabric without the protruding parts of low tear strength.

2.5 General safety regulations

Please note the following:

- Use the protective devices and fasten them securely. Never work without the guards and keep them in working order.
- Do not change the design of the dry vacuum cleaner and do not use it for purposes other than the operations foreseen by the manufacturer.
- Ensure that there is sufficient lighting.
- Never work under the influence of diseases that impair concentration, overtiredness, drugs, alcohol or medication.
- Keep children and persons not familiar with the dry vacuum cleaner away from their working environment.
- The dry vacuum cleaner must not be used by persons with reduced physical, sensory or mental capacity.
- Do not pull on the power cord to unplug it from the wall outlet. Protect the cord from heat, oil and sharp edges.
- Immediately eliminate malfunctions that affect safety.
- Protect the dry vacuum cleaner from moisture (risk of short circuit).
- Before each use, make sure that no parts are damaged on the dry vacuum cleaner.
- Damaged parts must be replaced immediately to avoid sources of danger.
- Do not overload the dry vacuum cleaner! It works better and safer in the specified power range.
- The unit must be used, assembled, repaired and transported on a stable and safe surface.
- Do not use this unit outdoors, in high humidity environments, or at low temperatures.
- Do not vacuum dust without a filter.
- Do not vacuum flammable materials.
- Do not vacuum explosive materials.
- Do not use the unit to vacuum explosive or flammable gases, liquids and dust particles, undiluted, strong acids and alkalis, metal dust particles (such as aluminum, magnesium, zinc) in combination with strong alkaline or acid cleaning agents.
- Do not vacuum substances that can cause explosions when in contact with air.
- Do not exceed the max. filling level of the container
- Do not use the vacuum cleaner in areas with temperatures above 40 ° C.
- Do not vacuum glowing objects.
- Never open the tank during operation.

- Do not immerse the device in water and do not use water jets to clean it.
- Never pull the power plug or the suction hose.
- Do not use compressed air to clean the dry vacuum cleaner.
- Use only original spare parts and accessories to avoid possible hazards and risks of accidents.
- Do not suck in any materials that could damage the filter elements (e.g. glass).
- Make sure that the values indicated on the motor block correspond to those of the mains voltage to which you wish to connect the unit.
- When using extension cables, make sure that they are compatible with the power cable (larger or equivalent cross-section) and that they do not come into contact with liquids or conductive surfaces.



DANGER!

Check the power cord regularly for damage, cracks or aging (hairline cracks). If necessary, replace the cable before use.



DANGER!

Always unplug the appliance before performing any work, especially when the appliance is unattended or in the presence of children.



DANGER!

Never point the suction opening at sensitive body parts - of humans as well as animals - such as eyes, ears, mouth ect.



DANGER!

Store the device on a firm, level surface and only in a closed room without humidity.



DANGER!

Only use the accessories supplied with the device or accessories that are precisely specified in the instructions. The use of other brushes may compromise safety.



DANGER!

Never leave the running dry vacuum cleaner unattended. Always disconnect the mains plug from the socket when the dry vacuum cleaner is not in use and keep it out of reach of children or unauthorized persons.



DANGER!

In the event of the unit tipping over, it is recommended to upright again before switching off.



DANGER!

The device is not suitable for environments that are protected against electrostatic discharges.



DANGER!

This vacuum cleaner is equipped with built-in thermal overload protection to protect the motor from high temperatures. This may occur during heavy use. If the motor shuts down during operation, turn off the switch and allow the motor to cool for 15-30 minutes. Turn on the dry vacuum and resume operation.

2.6 Safety labels

The following safety labels and instructions are attached to the vacuum cleaner (Fig. 1) and must be observed.

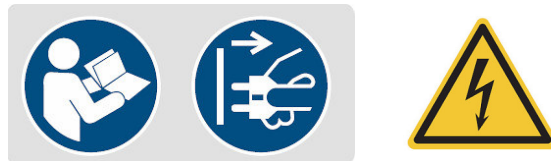


Fig. 1: Safety labels

If safety labels on the machine are damaged or missing, this can cause errors, personal injury and material damage. The safety symbols attached to the machine must not be removed. Damaged safety symbols must be replaced immediately.

As soon as the signs are not clearly visible and comprehensible at first glance, the machine must be stopped until new signs have been attached.

3 Intended use

The dry vacuum cleaner is designed exclusively for vacuuming dust and dirt, but not for wet vacuuming. The device is suitable for use in public buildings such as hotels, schools, factories, offices and stores.

The unit is suitable for the following applications:

Vacuuming dry, non-flammable dusts, wood chips and hazardous dusts with exposure limits $> 1 \text{ mg/m}^3$ (dust class L). The unit must be equipped with a suitable filter that corresponds to the hazard classification of the dusts to be collected.

Intended use also includes compliance with all the information in these instructions. Stürmer Maschinen GmbH accepts no liability for design and technical modifications to the dry vacuum cleaner. Claims of any kind for damage due to improper use are excluded.



DANGER!

Any modification of the device is prohibited. Modification may result in fire and injury, including death, to the user, in addition to voiding the warranty. The manufacturer shall not be held liable for any damage caused to objects or persons as a result of failure to comply with these instructions or in the event of misuse of the device.

3.1 Misuse



WARNING!

Danger in case of misuse!

Misuse of the dry vacuum cleaner can lead to dangerous situations.

- Only operate the dry vacuum cleaner in the power range listed in the technical data.
- Never bypass or disable the safety devices.
- Only operate the dry vacuum cleaner when it is in perfect technical condition.



DANGER!

This dry vacuum cleaner is not suitable for sucking up substances other than those specified in the intended use. Never vacuum incandescent, flammable, explosive or toxic substances.

- do not suck up materials that can damage the filter elements (e.g. glass splinters, etc.).

4 Technical Data

Model	dryCAT 16 L - Class
Length	240 mm
Width/depth	200 mm
Height	400 mm
Weight	4,7 kg
Supply voltage	220- 240 V
Air flow	1500 l/min
Filter surface	3000 cm ²
Dust class	L-Class
Tank volume	6 Liter
Tank material	Plastic
Hose diameter	30,5 mm
Sound pressure level	76,8 dB(A)
Cable length	6 m
Negative pressure	230 mbar
Absorbed power	1,2 kW

4.1 Type plate





Trockensauger Dry vacuum cleaner		  	
Typ Type	dryCAT 16 L-Class	Serien-Nr. Serial no.	
Artikel-Nr. Item no.	7002116	Baujahr <small>Monat/Jahr</small> Year of manufacture month/year	
Aufnahmeleistung Input power	1,2 kW	Netzanschluss Power connection	230 V / 50 Hz
Behältervolumen Tank capacity	6 l	Ansaugluftmenge Air flow	1500 l/min
Gewicht Weight	4,7 kg	Schalldruckpegel Sound pressure level	77 dB(A)
 www.cleancraft.de		Stürmer Maschinen GmbH Dr.-Robert-Pfleger-Str. 26, 96103 Hallstadt Deutschland / Germany	

Fig. 2: Type plate

5 Transport, packaging, storage

5.1 Transport

Check the Dry Vacuum Cleaner for visible transport damage after delivery. If you discover any damage to the Dry Vacuum Cleaner, report this immediately to the transport company or the dealer.

5.2 Packaging

All packaging materials and packing aids used for the dry aspirator are recyclable and must always be sent for material recycling.

Shred cardboard packaging components and take them to the waste paper collection.

The foils are made of polyethylene (PE) and the padding parts of polystyrene (PS). These materials should be taken to a collection point for recyclable materials or to your local waste disposal company.

5.3 Storage

Insert all accessories into the device according to Fig.3. Store the Dry Vacuum Cleaner in a dry, clean and frost-free environment.

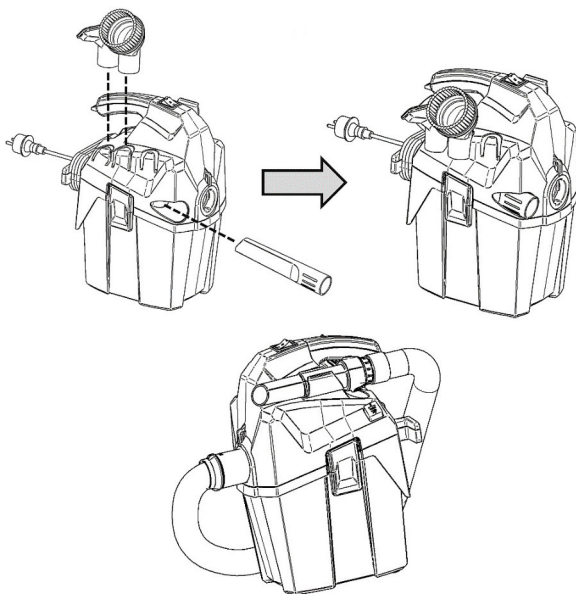


Fig. 3: Storage

6 Description of the device

Illustrations in these operating instructions may differ from the original.

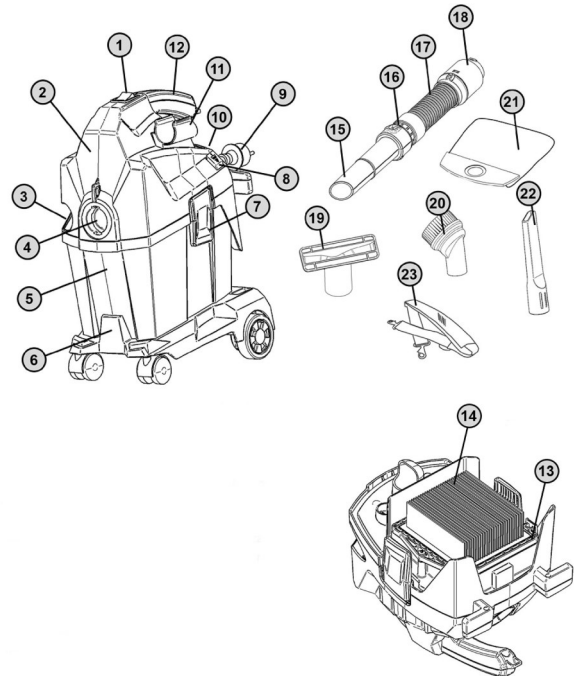


Fig. 4: Description of the device

- 1 ON/OFF switch
- 2 Unit head
- 3 Nozzle holder
- 4 Inlet opening
- 5 Tank
- 6 Chassis
- 7 Mounting clamps
- 8 Button for filter cleaning
- 9 Power cord
- 10 Suction tube
- 11 Suction tube holder
- 12 Carrying handle
- 13 Filter holder
- 14 Filter
- 15 Suction tube
- 16 Air regulation
- 17 Suction hose
- 18 Cuff
- 19 Upholstery nozzle
- 20 Brush nozzle
- 21 Dust bag
- 22 Crevice nozzle
- 23 Shoulder strap

6.1 Scope of delivery



Fig. 4.1: Scope of delivery

The dry vacuum cleaner is supplied with:

- Suction hose with connector and handle
- Fleece filter bag
- Air filter
- Shoulder strap
- Crevice nozzle
- Upholstery nozzle
- Round nozzle
- Universal adapter

6.2 Accessories

Description	Item number
Chassis	7013150
Hose with connector and handle	7013151
Fleece filter bag	7013152
Air filter	7013153
Shoulder strap	7013154
Joint nozzle	7013155
Upholstery nozzle	7013156
Round nozzle with brush	7013157
Universal adapter	7013158

7 Assembly

To make the dry vacuum cleaner ready for operation, please proceed as follows:

Step 1: Remove the packaging of the dry vacuum cleaner and check that there is no damage to the dry vacuum cleaner. Remove the scope of delivery (Fig.5, Pos.C) from the container by opening the latch (Fig.5, Pos.A) on the side of the upper part of the housing (Fig.5, Pos.B).

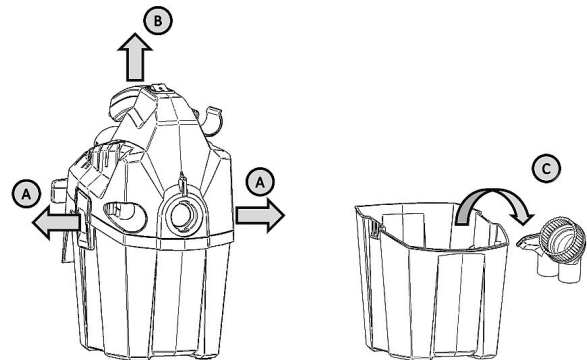


Fig. 5: Assembly of the suction cup

Step 2: Insert the filter bag into the container.

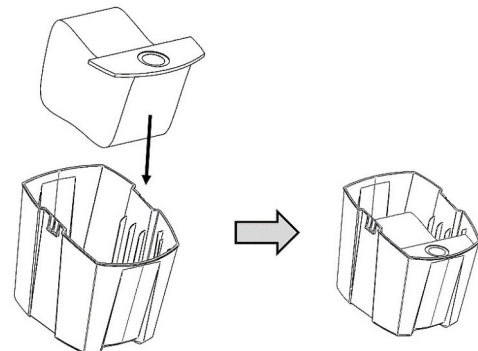


Fig. 6: Insert filter bag

Step 3: Place the upper part of the housing back on the container and close it.

Step 4: Insert the hose into the connection (Fig.7, Pos.1) and turn it to lock (Fig.7, Pos.2). To remove the hose again, turn it in the opposite direction and pull it out.

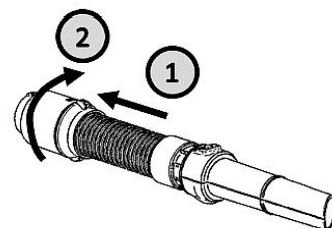


Fig. 7: Connect suction hose

Step 5: Connect the suction tube to the extension or floor nozzle (Fig.8) or other desired brush. The nozzle tube (fig.8,pos.14) can be removed for suction by pressing the button (fig.8,pos.A) and pulling out the nozzle (fig.8,pos.B).

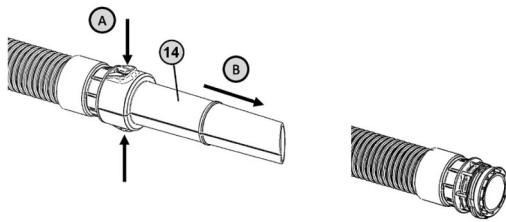


Fig. 8: Connect nozzle

Step 6: Insert the fasteners (Fig.9) of the carrying strap on the left and right side of the dry vacuum cleaner.

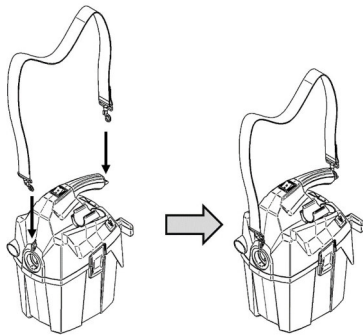


Fig. 9: Using the shoulder strap

8 Operation



DANGER!

Danger to life from electric shock!

There is a danger to life in case of contact with live components. Switched-on electrical components can perform uncontrolled movements and lead to serious injuries.

- Disconnect the mains plug or remove the battery before starting any settings on the dry vacuum cleaner.



DANGER!

The unit must be correctly mounted before use. It must also be checked that the filter elements are correctly mounted and efficient.

The unit should only be operated, mounted, repaired and transported on solid, level ground.

Make sure that the electrical data indicated on the motor block correspond to those of the mains to which the dry vacuum cleaner is to be connected and that the mains plug of the dry vacuum cleaner matches the socket outlet.



DANGER!

Always disconnect the power plug from the socket before handling the switched-off vacuum cleaner.

Always check the supply cable for damage such as cracks or signs of age. Replace the cord if necessary before further use.

Replacement of a defective power cord must be performed by technical service or qualified personnel.

When using an extension cable, make sure that it has the same cable dimension as the power supply cable of the vacuum cleaner and avoid contact of the cables with liquids or conductive surfaces.



WARNING!

Before commissioning the device, make sure that the voltage specified on the type plate corresponds to the mains voltage.

8.1 Start and Stop

Start

- Unwind the cable and insert the plug into a mains socket.
- Press the on/off button.

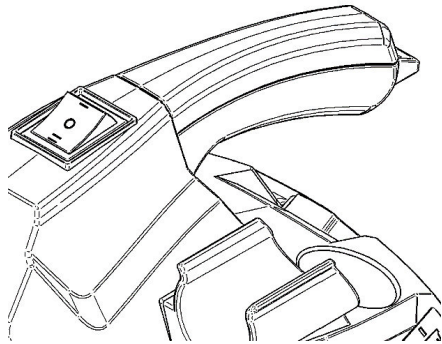


Fig. 10: On - Off Switch

Stop

- Switch off the device and disconnect the plug.
- When pulling out the plug, always touch the plug, not the cable.

8.2 Operating instructions

8.2.1 Suction and blowing function

The dry vacuum cleaner has 2 connections to which the suction hose can be connected.

Suction function: Insert the hose into the suction connection (Fig.11, Pos A).

Blower function: Insert the hose into the suction connection (Fig.11, Pos.B).

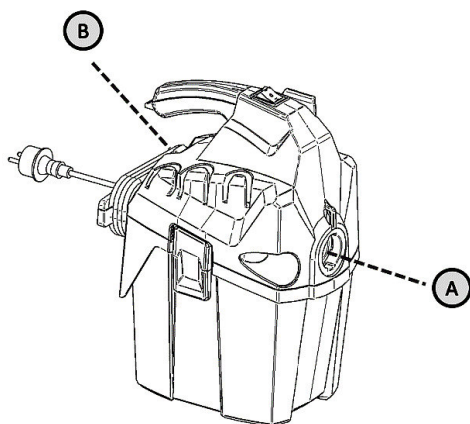


Fig. 11: Suction and blowing function

8.2.2 Air regulation

The air flow can be adjusted or regulated at the end of the hose by turning the air flow regulator.



Fig. 12: Air regulation

8.2.3 Filter cleaning system

The dry vacuum cleaner is equipped with a semi-automatic filter cleaning system that can clean the filter from dust and restore the suction power.

Step 1: Switch on the device.

Step 2: Insert the suction hose into the opening (Fig.13, Pos. B).

Step 3: Press the filter cleaning button 3 times to clean the filter.

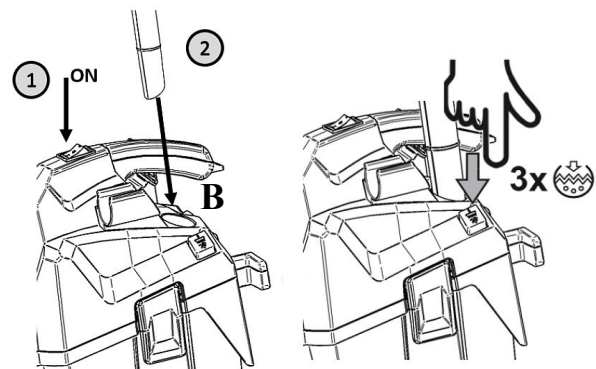


Fig. 13: Filter cleaning system

8.3 Seal inspection

Over time it is possible that the seals partially lose their function. We recommend checking the locking hooks, the flexible suction hoses and the seals for proper function at regular intervals.

Also check that the edges of the container are not damaged.

9 Care, maintenance and repair



DANGER!

Danger of potentially fatal electric shock!

There is a risk of fatal injury from contact with live parts. Electrical components which are switched on can carry out uncontrolled movements and cause serious injuries.

- Disconnect the mains plug before starting cleaning and maintenance work.

9.1 Care by cleaning

The dry vacuum cleaner must always be kept in a clean condition.



Protective gloves

For cleaning, wear suitable protective gloves to protect against injury.

The motor ventilation slots must be kept clean to ensure adequate cooling.



DANGER!

The user must perform a technical check at least once a year. This includes checking the filters for insufficient airtightness and for the correct functioning of the operating mechanism.

9.2 Maintenance and repair



DANGER!

Maintenance and repairs must always be carried out by qualified personnel; any damaged parts must only be replaced with original spare parts.



DANGER!

During maintenance by the user, the device must be disassembled, cleaned and checked without endangering maintenance personnel or other people.

Daily maintenance and control

- Make sure that the vacuum cleaner's power cord is not damaged.
- Check that the filter unit is not damaged.
- Check the level of the container tank.
- Check that the suction hose and other accessories are not damaged.
- Check the seal when you close the hooks on the cover.

9.3 Replacing the filter

The filter will wear out over time and need to be replaced with a new one, or it may become severely clogged/dirty and need to be cleaned manually as the semi-automatic filter cleaning is not sufficient to clean the filter.

Step 1: Switch off the device and disconnect the power plug.

Step 2: Open the locking hook and remove the upper part of the housing.

Step 3: Loosen screw A (Fig. 14) and remove filter B (Fig. 14).

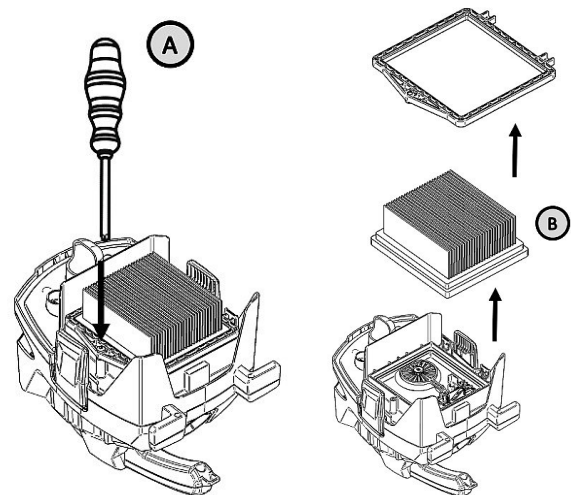


Fig. 14: Remove filter

Step 4: Assemble the new or cleaned filter in reverse order. Be careful not to overtighten the screws.

9.3.1 Cleaning the filter

Once the filter is very dirty, clean it under cold water and let it dry completely before reinserting it.

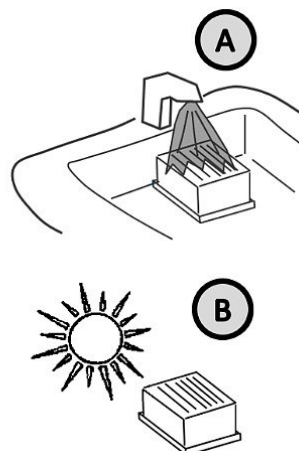


Fig. 15: Clean the filter

10 Disposal, recycling of used devices

Please take care in your own interest and in the interest of the environment that all component parts of the machine are only disposed of in the intended and permitted way.

10.1 Decommission

Disused equipment must be taken out of service immediately in order to avoid later misuse and endangering the environment or people.

- Remove all environmentally hazardous fluids from the old unit.
- If necessary, dismantle the machine into manageable and usable assemblies and components.
- Guide the machine components and operating materials to the appropriate disposal routes.

10.2 Disposal of electrical equipment

Please note that electrical appliances contain a variety of recyclable materials as well as environmentally harmful components.

Make sure that these components are disposed of separately and properly. In case of doubt, please contact your municipal waste disposal.

If necessary, the help of a specialized waste disposal company can be used for the treatment.

10.3 Disposal of lubricants

Please ensure that the coolants and lubricants used are disposed of in an environmentally friendly manner. Observe the disposal instructions of your municipal waste disposal companies. The disposal instructions for the lubricants used are provided by the lubricant manufacturer. If necessary, ask for the product-specific data sheets.

10.4 Disposal via municipal collection points

Disposal of used electrical and electronic equipment (to be used in the countries of the European Union and other European countries with a separate collection system for this equipment).



The symbol on the product or its packaging indicates that this product is not to be treated as normal household waste and must be returned to a collection point for the recycling of electrical and electronic equipment. By contributing to the proper disposal of this product, you protect the environment and the health of your fellow human beings. Environment and health are endangered by incorrect disposal. Material recycling helps to reduce the consumption of raw materials. For more information about recycling this product, contact your local community, municipal waste management company or the store where you purchased the product.

11 Troubleshooting



DANGER!

If any of the following faults occur, immediately stop working with the dry vacuum cleaner. Before you start troubleshooting, switch off the dry vacuum cleaner and disconnect the power plug. Serious injury could otherwise result. All repairs or replacement work may only be carried out by qualified and trained personnel.



NOTE!

If you are unable to correct the problem with your vacuum yourself, please contact your nearest Cleancraft dealer. Please write down the following information from the vacuum or from the operating instructions beforehand so that they can help you with your problem in the best possible way.

- Model designation of the device
- Serial number of the device
- Year of manufacture
- Exact error description

Fault	Possible cause	Remedy
Device does not work	<ol style="list-style-type: none"> 1. Mains plug is not plugged in. 2. Supply cables defective. 3. Switch defective 4. Motor defective. 5. Circuit breaker tripped 	<ol style="list-style-type: none"> 1. Plug in the power plug. 2. Call the service engineer. 3. Call service engineer. 4. Call service technician. 5. Check circuit breaker and allow unit to cool down.
Suction power decreases	Blockages in the suction nozzle, suction pipe, suction hose or filter.	<ol style="list-style-type: none"> 1. Remove blockages. 2. Clean or change the filter. 3. Engage the filter cover correctly. 4. Check the correct installation position of the filter.
Strong noise level while the vacuum cleaner is in operation	Filter or motor heavily contaminated or clogged	Clean or replace filter. If the noise level remains high, call a service technician.
Dry vacuum cleaner switches off automatically during operation	Thermal protection has tripped due to a clogged filter or other overload.	<ol style="list-style-type: none"> 1. Switch off the device and clean the filter or eliminate the cause of the overload. Wait 15 to 30 minutes before operating the dry vacuum cleaner into operation. 2. Check the power supply. The unit may not be working due to a power surge.

12 Spare parts drawing



DANGER!

Risk of injury due to the use of incorrect spare parts!

The use of incorrect or faulty spare parts can result in danger to the operator and cause damage and malfunctions.

- Only original spare parts from the manufacturer or spare parts approved by the manufacturer are to be used.
- In case of any uncertainties, always contact the manufacturer.



Garantieverlust

Bei Verwendung nicht zugelassener Ersatzteile erlischt die Herstellergarantie.

12.1 Ordering spare parts

The spare parts can be obtained from the authorized dealer or directly from the manufacturer. The contact details can be found in chapter 1.2 Customer service.

Specify the following key data when ordering spare parts:

- Device type
- Serial number
- Quantity
- Designation
- Desired shipping method (mail, freight, sea, air, express)
- Shipping address

Spare parts orders without the above information cannot be considered. In the absence of information on the shipping method, shipping will be at the discretion of the supplier.

Information on the device type, article number and year of manufacture can be found on the type plate, which is attached to the device.

Example

The engine for the Dry vacuum cleaner dryCAT 16 L - Class must be ordered. The engine has the number 10 in the spare parts drawing 1.

By ordering spare parts, send a copy of the spare parts drawing (1) with the marked part (engine) and marked position number (10) to the dealer or spare parts department and provide the following information:

- Type of device: **dryCAT 16 L - Class**
- Item number: **7002116**
- Drawing number: **1**
- Position number: **10**

12.2 Spare parts drawing

The following drawing should help to identify necessary spare parts in case of service. To order, send a copy of the parts drawing with the marked components to your authorized dealer.

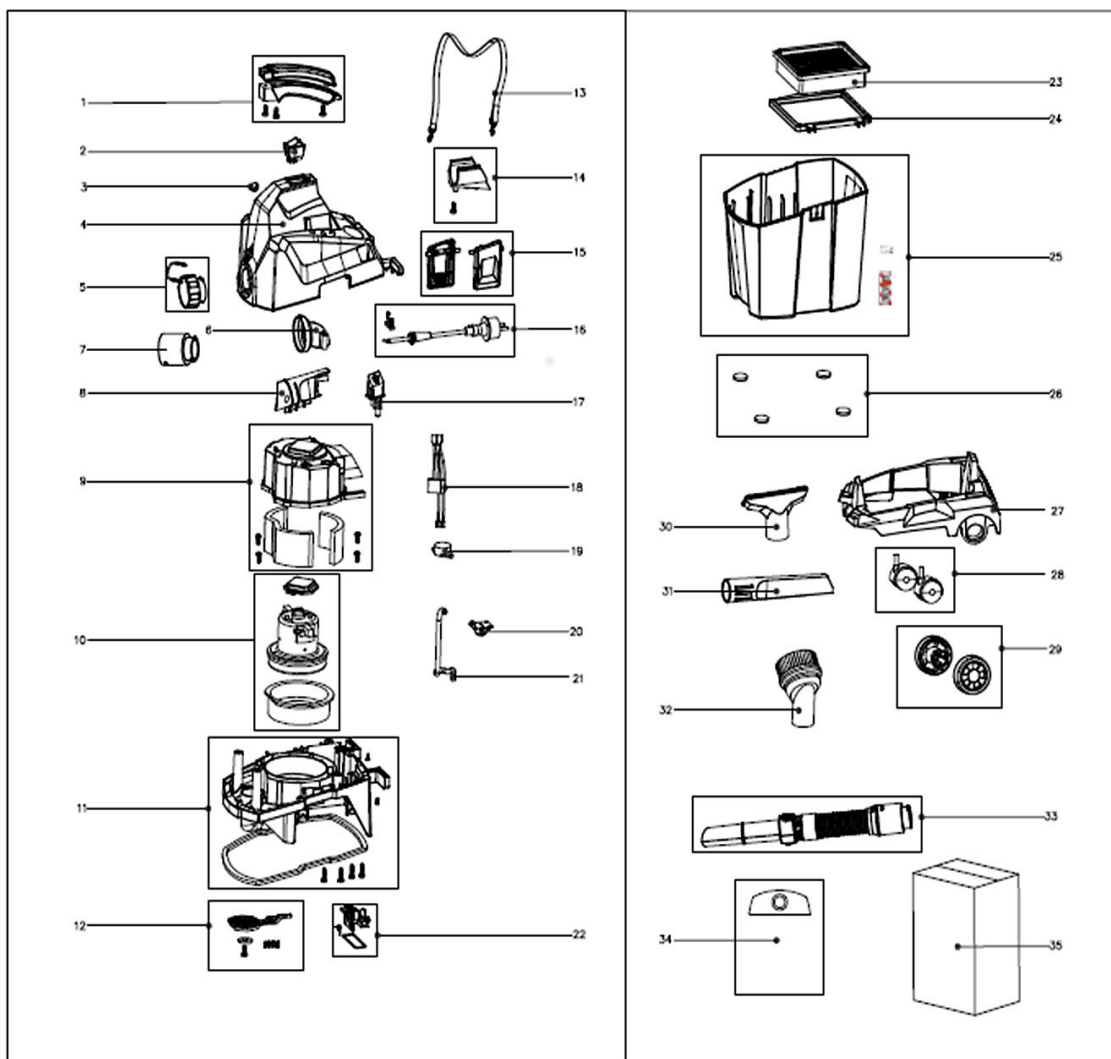


Fig. 16: Spare parts drawing 1

13 Electrical circuit diagram

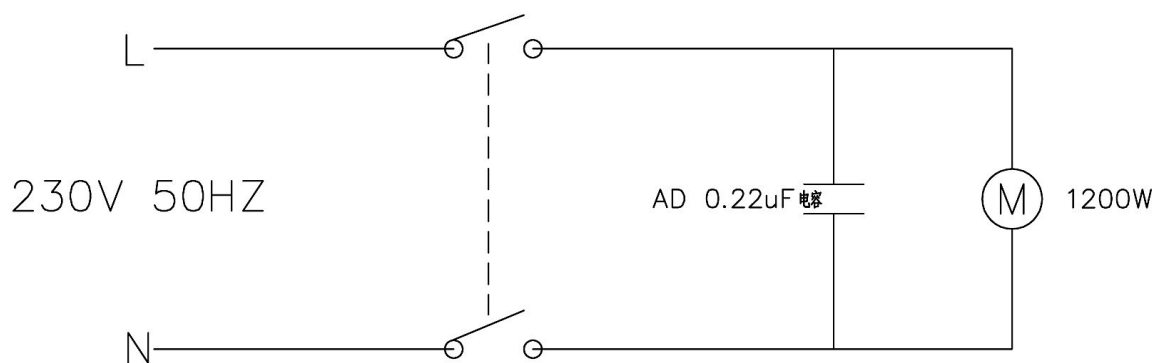


Fig. 17: Electrical circuit diagram

14 EC-Declaration of Conformity

Manufacturer/Carrier: Stürmer Maschinen GmbH
Dr.-Robert-Pfleger-Str. 26
D-96103 Hallstadt

hereby declares that the following product

Product group : Cleancraft® Cleaning technology

Type of machine: Dry Vacuum Cleaner

Designation of the device: dryCAT 16 L - Class

Item number: 7002116

Serial number *: _____

Year of manufacture *: 20 _____

* fill in these fields according to the information on the type plate

due to its design and construction, as well as in the version placed on the market by us, complies with the relevant, complies with the relevant essential health and safety requirements of the Low Voltage Directive 2014/35/EU.

Applicable EU directives:	2011/65/EU	RoHS-Directive
	2012/19/EU	WEEE-Directive
	2014/30/EU	EMV-Directive

Applicable EU regulations:	1907/2006/EU	REACH-Regulation
-----------------------------------	--------------	------------------

The following harmonized standards have been applied:

DIN EN 60335-1:2020-08	Household and similar electrical appliances - Safety - Part 1: General requirements
DIN EN 60335-2-69:2015-07	Household and similar electrical appliances - Safety - Part 2-69: Particular requirements for wet and dry vacuum cleaners, including power brush for commercial use
DIN EN 62233:2008-11	Measurement methods for electromagnetic fields of household appliances and similar apparatus with regard to human exposure
DIN EN 55014-1:2018-08	Electromagnetic compatibility - Requirements for household appliances, electric tools and similar apparatus - Part 1: Emission
DIN EN 55014-2:2016-01	Electromagnetic compatibility - Requirements for household appliances, electric tools and similar apparatus - Part 2: Immunity - Product family standard
DIN EN 61000-3-2:2015-03	Electromagnetic compatibility (EMC) - Part 3-2: Limits - Limits for harmonic current emissions (equipment input current ≤ 16 A per phase)
DIN EN 61000-3-3:2014-03	Electromagnetic compatibility (EMC) - Part 3-3: Limits - Limitation of voltage changes, voltage fluctuations and flicker in public low-voltage supply systems, for equipment with rated current ≤ 16 A per phase and not subject to conditional connection

Responsible for documentation: Kilian Stürmer, Stürmer Maschinen GmbH,
Dr.-Robert-Pfleger-Str. 26, D-96103 Hallstadt

Hallstadt, 09.12.2020



Kilian Stürmer
Managing Director

