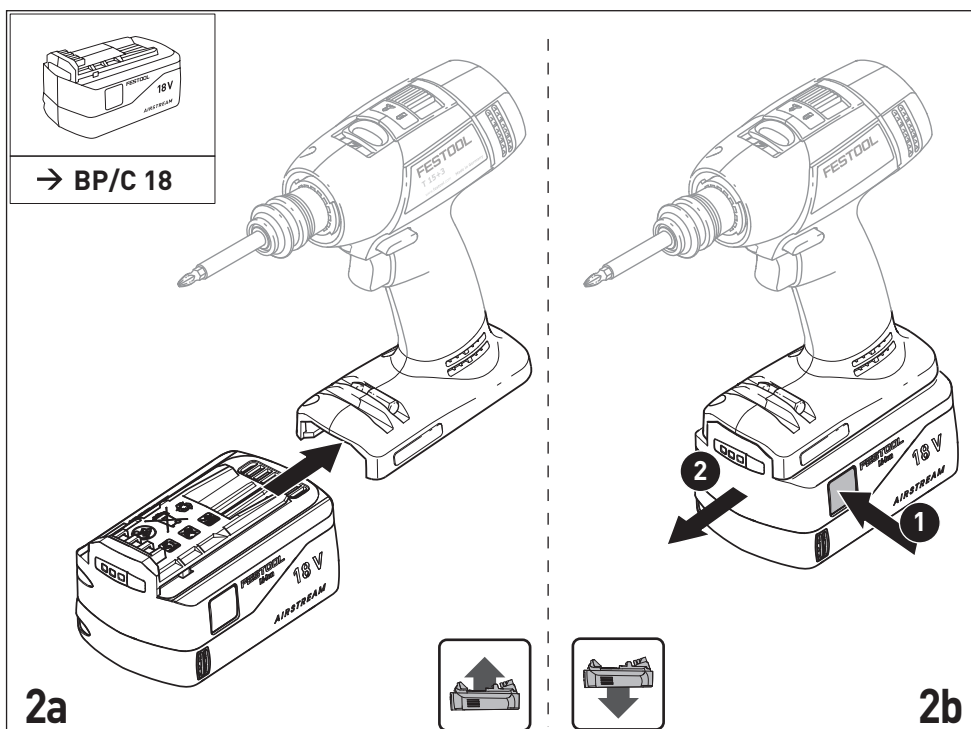
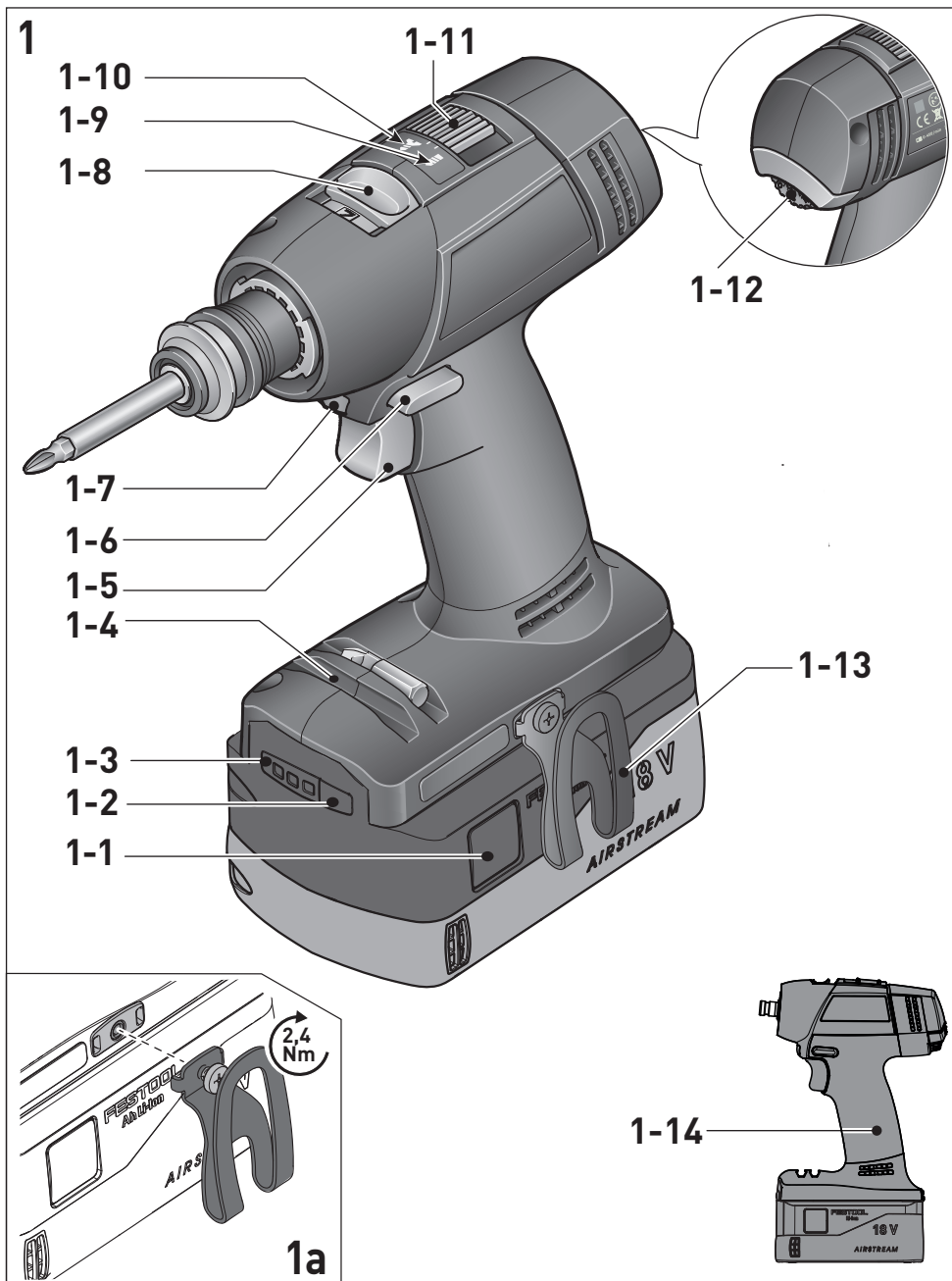


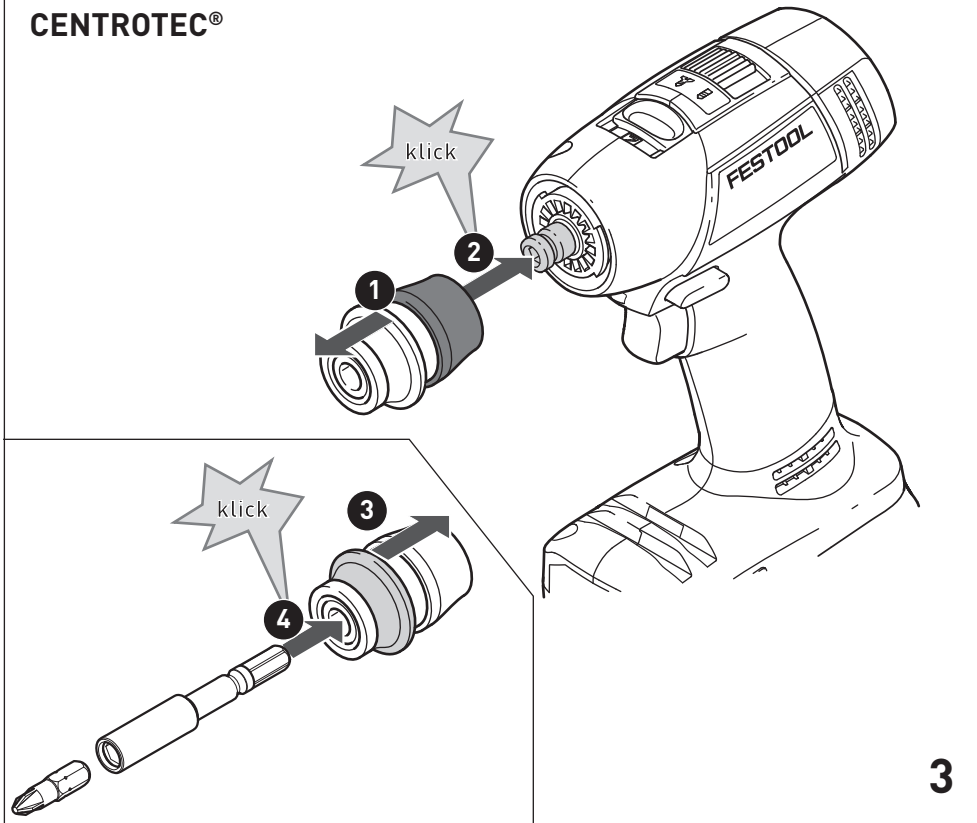
de	Originalbetriebsanleitung - Akku-Bohrschrauber	8
en	Original instructions - Cordless drill	13
fr	Notice d'utilisation d'origine - Perceuses-visseuses sans fil	18
es	Manual de instrucciones original - Taladro atornillador de baterías	23
it	Istruzioni per l'uso originali - Trapano avvitatore a batteria	28
nl	Originele gebruiksaanwijzing - Accuschroefboormachine	33
sv	Originalbruksanvisning - Batteri-borr/skruvdragare	38
fi	Alkuperäiset käyttöohjeet - Akkukäyttöinen porakone/ruuvinväännin	43
da	Original brugsanvisning - Akku bore-skruemaskine	48
nb	Originalbruksanvisning - Batteridrevet bor-/skrumaskin	53
pt	Manual de instruções original - Aparafusadora de acumulador	58
ru	Оригинальное руководство по эксплуатации - Аккумуляторная дрель-шуруповёрт	63
cs	Originální návod k použití - Vrtací akušroubovák	69
pl	Oryginalna instrukcja eksploatacji - Akumulatorowa wiertarko-wkrętarka	74

T18+3

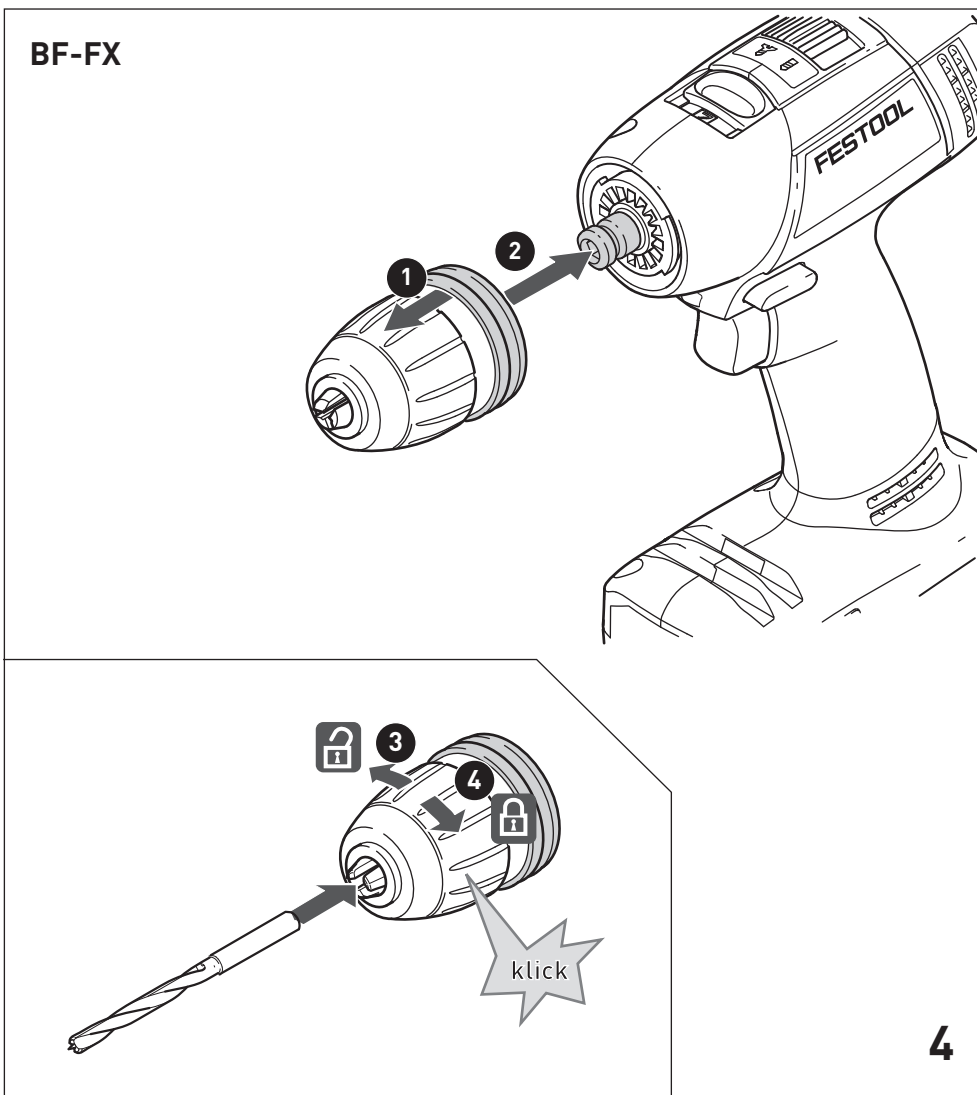




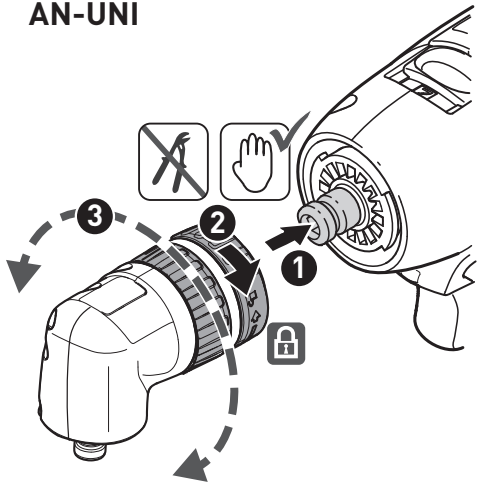
**WH-CE
CENTROTEC®**



BF-FX

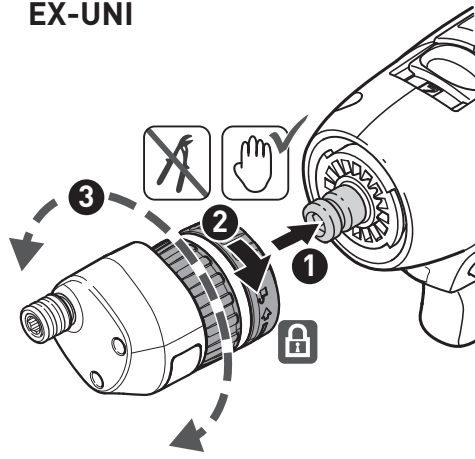


AN-UNI



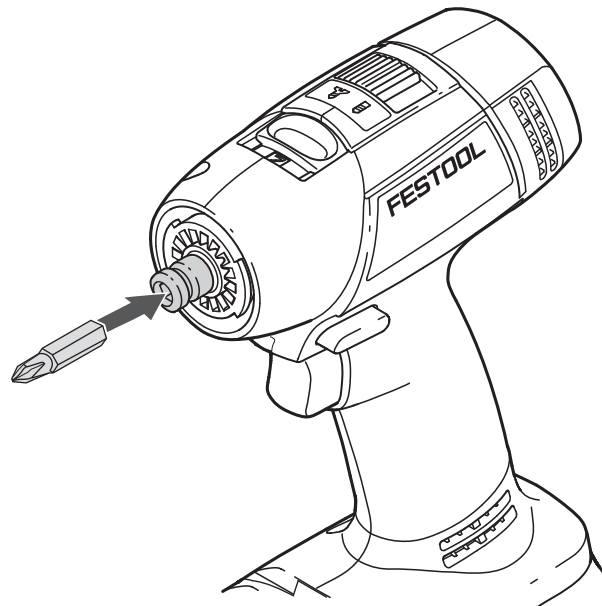
5

EX-UNI



6

7



Akku-Bohrschrauber	Seriennummer ¹⁾
Cordless drill/ screwdriver	Serial number ¹⁾
Perceuses-visseuses sans fil	N° de série ¹⁾ (T-Nr.)

T 18+3

205051, 205160

de EG-Konformitätserklärung. Wir erklären in alleiniger Verantwortung, dass dieses Produkt allen einschlägigen Bestimmungen der folgenden Richtlinien einschließlich ihrer Änderungen entspricht und mit den folgenden Normen übereinstimmt:

en EC-Declaration of Conformity. We declare under our sole responsibility that this product is in conformity with all relevant provisions of the following directives including their amendments and complies with the following standards:

fr CE-Déclaration de conformité communautaire. Nous déclarons sous notre propre responsabilité que ce produit est conforme aux normes ou documents de normalisation suivants:

es CE-Declaración de conformidad. Declaramos bajo nuestra exclusiva responsabilidad que este producto corresponde a las siguientes normas o documentos normalizados:

it CE-Dichiarazione di conformità. Dichiariamo sotto la nostra esclusiva responsabilità che il presente prodotto è conforme alle norme e ai documenti normativi seguenti:

nl EG-conformiteitsverklaring. Wij verklaren op eigen verantwoordelijkheid dat dit produkt voldoet aan de volgende normen of normatieve documenten:

sv EG-konformitetsförklaring. Vi förklarar i eget ansvar, att denna produkt stämmer överens med följande normer och normativa dokument:

fi EY-standardinmukaisuusvakuutus. Vakuutamme yksinvastuullisina, etta tuote on seuraavien standardien ja normatiivisten ohjeiden mukainen:

da EF-konformitetserklæring. Vi erklærer at have alene ansvaret for, at dette produkt er i overensstemmelse med de følgende normer eller normative dokumenter:

nb CE-Konformitetserklæring. Vi erklærer på eget ansvar at dette produktet er i overensstemmelse med følgende normer eller normative dokumenter:

pt CE-Declaração de conformidade. Declaramos, sob a nossa exclusiva responsabilidade, que este produto corresponde às normas ou aos documentos normativos citados a seguir:

ru Декларация соответствия ЕС. Мы заявляем с исключительной ответственностью, что данный продукт соответствует следующим нормам или нормативным документам:

cs ES prohlášení o shodě. Prohlašujeme s veškerou odpovědností, že tento výrobek je ve shodě s následujícími normami nebo normativními dokumenty:

pl Deklaracja o zgodności z normami UE. Niniejszym oświadczamy na własną odpowiedzialność, że produkt ten spełnia następujące normy lub dokumenty normatywne:

2006/42/EG, 2014/30/EU²⁾, 2014/53/EU³⁾,
2011/65/EU

EN 62841-1: 2015 + AC:2015, EN 62841-2-1:2018
EN 62841-2-2:2014 + AC:2015,
EN 55014-1: 2017²⁾, EN 55014-2: 2015²⁾,
EN 300 328:2016 V2.1.1³⁾,
EN 301 489-1:2017 V2.1.1³⁾,
EN 301 489-17:2017 V3.1.1³⁾,
EN 50581: 2012



Festool GmbH

Wertstr. 20, D-73240 Wendlingen
GERMANY

Wendlingen, 2019-06-25

Markus Stark
Head of Product Development

Ralf Brandt
Head of Product Conformity

¹⁾ im definierten Seriennummer-Bereich (S-Nr.) von 40000000 - 49999999/
in the specified serial number range (S-Nr.) from 40000000 - 49999999/
dans la plage de numéro de série (S-Nr.) de 40000000 - 49999999

²⁾ gilt in Kombination mit Akku/
valid in combination with battery pack/
valable en combinaison avec batterie
BP 18 Li 5,2 AS, BP 18 Li 6,2 AS, BP 18 Li 3,1 C

³⁾ gilt in Kombination mit Bluetooth® Akku/
valid in combination with Bluetooth® battery pack/
valable en combinaison avec Bluetooth® batterie
BP 18 Li 5,2 ASI, BP 18 Li 6,2 ASI, BP 18 Li 3,1 CI

Declaration of Conformity

We as the manufacturer **Festool GmbH, Wertstraße 20, 73240 Wendlingen, Germany** declare under our sole responsibility that the product(s):

Designation: **Cordless drill/screwdriver**
Designation of Type(s): **T 18+3**
Serial number(s) ¹⁾: **205051**

fulfills all the relevant provisions of the following UK Regulations:

- S.I. 2008/1597 Supply of Machinery (Safety) Regulations 2008
- S.I. 2016/1091²⁾ Electromagnetic Compatibility Regulations 2016
- S.I. 2017/1206³⁾ Radio Equipment Regulations 2017
- S.I. 2012/3032 Restriction of the Use of Certain Hazardous Substances in Electrical and Electronic Equipment Regulations 2012

and are manufactured in accordance with the following designated standards:

- BS EN 62841-1: 2015
- BS EN 62841-2-1:2018
- BS EN 62841-2-2: 2014
- BS EN 55014-1:2017²⁾
- BS EN 55014-2:2015²⁾
- EN 300 328:2016 V2.1.1³⁾
- EN 301 489-1:2017 V2.1.1³⁾
- EN 301 489-17:2017 V3.1.1³⁾
- BS EN IEC 63000:2018

¹⁾ in the specified serial number range (S-Nr.) from 400000000 – 499999999

²⁾ valid in combination with battery pack BP 18 Li 5,2 AS, BP 18 Li 6,2 AS, BP 18 Li 3,1 C, BP 18 Li 4,0 HPC-AS

³⁾ valid in combination with Bluetooth® battery pack BP 18 Li 5,2 ASI, BP 18 Li 6,2 ASI, BP 18 Li 3,1 CI, BP 18 Li 4,0 HPC-ASI



Place and date of declaration: Wendlingen, 31.03.2021

Signed on behalf of and in name of Festool GmbH


Markus Stark
Head of Productdevelopment


Ralf Brandt
Head of Productconformity

Contents

1	Symbols.....	13
2	Safety warnings.....	13
3	Intended use.....	14
4	Technical data.....	14
5	Functional description.....	15
6	Commissioning.....	15
7	Battery pack.....	15
8	Settings.....	16
9	Tool holder, attachments.....	16
10	Working with the machine.....	16
11	Service and maintenance.....	17
12	Environment.....	17
13	General information.....	17

1 Symbols



Warning of general danger



Warning of electric shock



Read the operating instructions and safety instructions.



Wear ear protection.



Wear protective goggles.



Wear a dust mask.



Do not dispose of it with domestic waste.



CE marking: Confirms the conformity of the power tool with the European Community directives.



Tip or advice



Handling instruction



Inserting the battery pack



Removing the battery pack



Only assemble by hand!



UKCA marking: The United Kingdom Conformity Assessed symbol is a marking for products being placed on the market in the United Kingdom. It is a manufacturer's indication that the product is in conformance with the relevant regulations in the UK.

2 Safety warnings

2.1 General power tool safety warnings



WARNING! Read all safety warnings, instructions, illustrations and specifications provided with this power tool. Failure to follow all instructions listed below may result in electric shock, fire and/or serious injury.

Save all warnings and instructions for future reference.

The term "power tool" in the warnings refers to your mains-operated (corded) power tool or battery-operated (cordless) power tool.

Follow the operating manual for the charger and the battery pack.

2.2 Machine-specific safety notices

- **Hold the power tool by insulated gripping surfaces, when performing an operation where the cutting accessory or fasteners may contact hidden wiring.** Cutting accessory contacting a "live" wire may make exposed metal parts of the power tool "live" and could give the operator an electric shock.

Safety instructions when using long drill bits

- **Never operate at higher speed than the maximum speed rating of the drill bit.** At higher speeds, the bit is likely to bend if allowed to rotate freely without contacting the workpiece, resulting in personal injury.
- **Always start drilling at low speed and with the bit tip in contact with the workpiece.** At higher speeds, the bit is likely to bend if allowed to rotate freely without contacting the workpiece, resulting in personal injury.
- **Apply pressure only in direct line with the bit and do not apply excessive pressure.** Bits can bend causing breakage or loss of control, resulting in personal injury.

2.3 Further safety instructions

- **Use appropriate detection devices to look for any hidden supply lines or consult your local utility company.** If the insertion tool makes contact with live cables, it can result in fire and electric shock. Damage to a gas

pipe can lead to an explosion. Penetration of a water pipe can result in damage to property.



Wear suitable personal protective equipment: Ear protection and safety goggles.

CAUTION! Power tool can jam and cause sudden kickback! Switch off immediately!

- **Hold the power tool firmly in your hand. Make sure the speed is adjusted correctly when screwdriving. Be prepared for a high reaction torque**, which may cause the power tool to turn and possibly lead to injury.
- **Do not use the power tool in the rain or in damp surroundings.** Moisture in the power tool may cause a short circuit and fire.
- Do not lock the on/off switch in place permanently.
- **Do not use power supply units or third-party battery packs to operate cordless power tools. Do not use third-party chargers to charge the battery packs.** The use of accessories not expressly authorised by the manufacturer can result in electric shocks and/or serious accidents.
- **Only for AS/NZS:** The tool shall always be supplied via residual current device with a rated residual current of 30 mA or less.

2.4 Emission levels

The levels determined in accordance with EN 62841 are typically:

Sound pressure level	$L_{PA} = 64 \text{ dB(A)}$
Sound power level	$L_{WA} = 75 \text{ dB(A)}$
Uncertainty	$K = 5 \text{ dB}$



CAUTION

Noise generated when working
Risk of damage to hearing

- Use ear protection.

4 Technical data

Cordless drill	T18+3	
Motor voltage	18 V	
No-load speed*	1st gear	0 - 450 rpm
	1st gear	0 - 1500 rpm

Vibration emission level a_h (vector sum for three directions) and uncertainty K measured in accordance with EN 62841:

Drilling in metal	$a_h = 2,7 \text{ m/s}^2$
	$K = 1,5 \text{ m/s}^2$
Fastening	$a_h < 2,5 \text{ m/s}^2$
	$K = 1,5 \text{ m/s}^2$

The specified emission levels (vibration, noise)

- are used to compare machines.
- They are also used for making preliminary estimates regarding vibration and noise load during operation.
- They represent the primary applications of the power tool.



CAUTION

The emission values may deviate from the specified values. This is dependent on how the tool is used and the type of workpiece being machined.

- The actual load during the entire operating cycle must be evaluated.
- Depending on the actual load, suitable protective measures must be defined in order to protect the operator.

3 Intended use

Cordless drill suitable

- for drilling in metal, wood, plastics and similar materials,
- for screwing in and tightening screws.
- intended for use with BP Festool battery packs of the same voltage class.



The user is liable for damage and accidents caused by improper and non-intended use; this also includes damage and wear caused by continuous industrial operation.

Cordless drill	T18+3	
Max. torque	Soft material (wood)	35 Nm
	Soft material (wood)	50 Nm
Adjustable torque**	1st gear	0.8 - 8 Nm
	2nd gear	0.5 - 6 Nm
Chuck clamping range	1.5 - 13 mm	
Max. drill diameter	Wood	45 mm
	Metal	13 mm
Tool holder in drill spindle	1/4"	
Weight (incl. battery pack BP 18 Li 6,2 AS and chuck) as per EPTA procedure 01:2014	2 kg	
Weight with Centrotec, without battery pack.	1.0 kg	

* Speed specifications with fully charged battery pack.

** The maximum speed is reduced in the lower torque stages (values in clockwise rotation).

5 Functional description

- [1-1]** Buttons for releasing the battery pack
- [1-2]** Capacity display button on battery pack
- [1-3]** Capacity indicator
- [1-4]** Bit store
- [1-5]** On/off switch
- [1-6]** Rotational direction switch
- [1-7]** LED light
- [1-8]** Gear switch
- [1-9]** Drilling symbol
- [1-10]** Screwdriving symbol
- [1-11]** Screwdriving/drilling selector switch
- [1-12]** Torque thumbwheel
- [1-13]** Belt clip
- [1-14]** Insulated gripping surfaces (grey shaded area)

Accessories shown or described are not always included in the scope of delivery.

The specified illustrations appear at the beginning of the Operating Instructions.

6 Commissioning

6.1 Belt clip

The belt clip allows a short-term securing of the device in the work clothes. Insert the belt clip on the designated side, right or left, and fix it with the screw **[1a]**.

6.2 Switching on/off [1-5]

Press = ON, release = OFF

- ⓘ The speed can be infinitely adjusted, relative to the pressure applied to the on/off switch.

The LED light **[1-7]** lights up when the on/off switch **[1-5]** is pressed.

7 Battery pack

7.1 Changing the battery pack




Inserting the battery pack [2a]

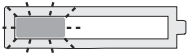
Removing the battery pack [2b]

The battery pack is ready to use straight out of the box and can be charged at any time.

7.2 Capacity indicator

The capacity display **[1-3]** indicates the charge of the battery pack for approx. 2 seconds after the button **[1-2]** is pressed:

	70–100%
	40–70%
	15–40%



< 15%*

* **Recommendation:** Charge the battery pack before any further use.

- i** Further information about the charger and battery pack with capacity indicator can be found in the corresponding operating manual.

8 Settings



CAUTION

Risk of injury

- ▶ Only adjust the settings when the power tool is switched off.

8.1 Changing direction of rotation [1-6]

- Switch to the left = clockwise rotation
- Switch to the right = counterclockwise rotation

8.2 Changing gear [1-8]

- i** Only actuate the gear switch with the tool switched off. Otherwise there is a risk of damaging the gear unit.

- Gear switch forwards (digit 1 visible) = 1st gear
- Gear switch to rear (digit 2 visible) = 2nd gear

8.3 Fastening

Adjust the switch so that its marking [1-11] faces the screw symbol [1-10].

Adjust the torque accordingly at the torque wheel [1-12].

Position 1 = low torque

Position 25 = high torque

An **acoustic signal** sounds when the preset torque is reached and the machine then switches off. You must release and press the ON/OFF switch [1-5] again to start the machine.

8.4 Drilling

Adjust the switch [1-11] so that its marking faces the drilling symbol [1-9]. Maximum torque is set in this position.

9 Tool holder, attachments



WARNING

Risk of injury

- ▶ Remove the battery pack from the power tool before performing any work on the power tool.



CAUTION

Risk of injury from hot and sharp insertion tool

- ▶ Do not use any blunt or faulty insertion tools.
- ▶ Wear protective gloves when handling an insertion tool.

9.1 CENTROTEC tool chuck [3]

Quick change of tools with CENTROTEC shaft



Only clamp CENTROTEC tools in CENTROTEC tool chucks.

9.2 Chuck [4]

For clamping drill bits and bits with max. shaft diameter of 13 mm.

WARNING! Clamp the tool centrally in the chuck.

9.3 Angle attachment [5]

Drilling and screwdriving at right angles to the power tool (available as an accessory depending on the model).

9.4 Eccentric adapter [6]

Screwdriving close to edges with bits according to ISO 1173 (available as an accessory depending on the model).

9.5 Tool holder in the drill spindle [7]

Bits can be inserted directly into the hexagon socket holder of the drill spindle.

10 Working with the machine



WARNING

Risk of injury

- ▶ Always secure the workpiece in such a manner that it cannot move while being machined.

10.1 Bit depot [1-4]

Magnetic, for storing bits and bit holders.

10.2 Acoustic warning signals

Acoustic warning signals sound and the machine switches off in the following operating states:



Battery flat or machine overloaded.

- Change the battery.
- Place the machine under reduced stress.



Machine is overheating.

- You must allow the machine to cool before using again.



Lithium battery pack is faulty or has overheated.

- Once the battery pack has cooled, perform a functional check using the charger.

and handed in for environmentally friendly recycling.

Information on REACH: www.festool.com/reach

13 General information

Imported into the UK by

Festool UK Ltd
1 Anglo Saxon Way
Bury St Edmunds
IP30 9XH
Great Britain

13.1 Bluetooth®

The Bluetooth® word mark and the logos are registered trademarks of Bluetooth SIG, Inc.; they are used by TTS Tooltechnic Systems AG & Co. KG, and therefore by Festool, under licence.

11 Service and maintenance



WARNING

Risk of injury, electric shock

- ▶ Always remove the battery pack from the power tool before performing any maintenance or service work.
- ▶ All maintenance and repair work which requires the motor housing to be opened should always be carried out by an authorised service workshop.



Customer service and repairs must only be carried out by the manufacturer or service workshops. Find the nearest address at:
www.festool.co.uk/service



Always use original Festool spare parts. Order no. at:
www.festool.co.uk/service

To ensure constant air circulation, always keep the cooling air openings in the motor housing clean and free of blockages.

Keep the contacts on the power tool, charger and battery pack clean.

12 Environment



Do not dispose of the device in the household waste! Recycle devices, accessories and packaging. Observe applicable national regulations.

EU only: In accordance with the European Directive on waste electrical and electronic equipment and implementation in national law, used power tools must be collected separately