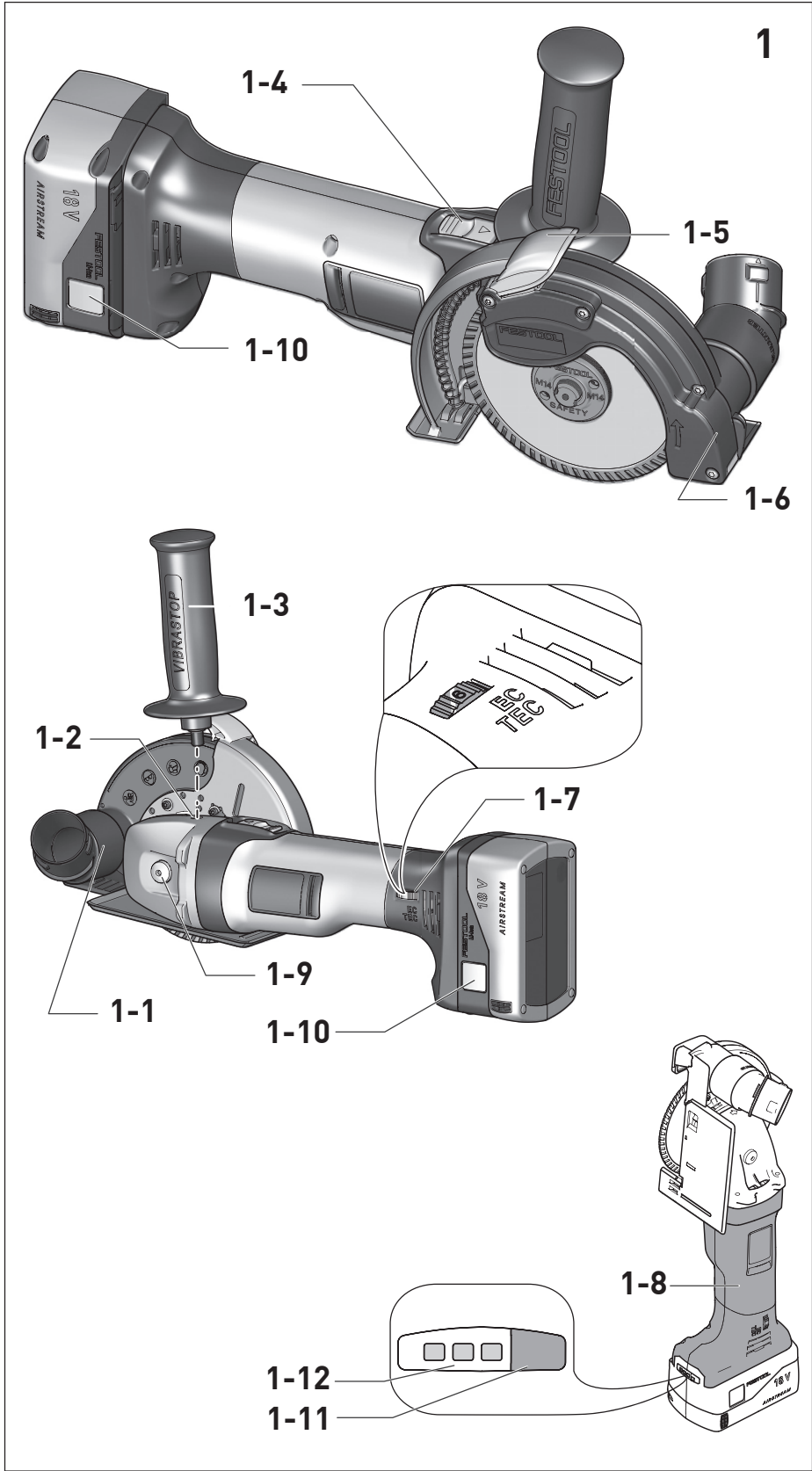
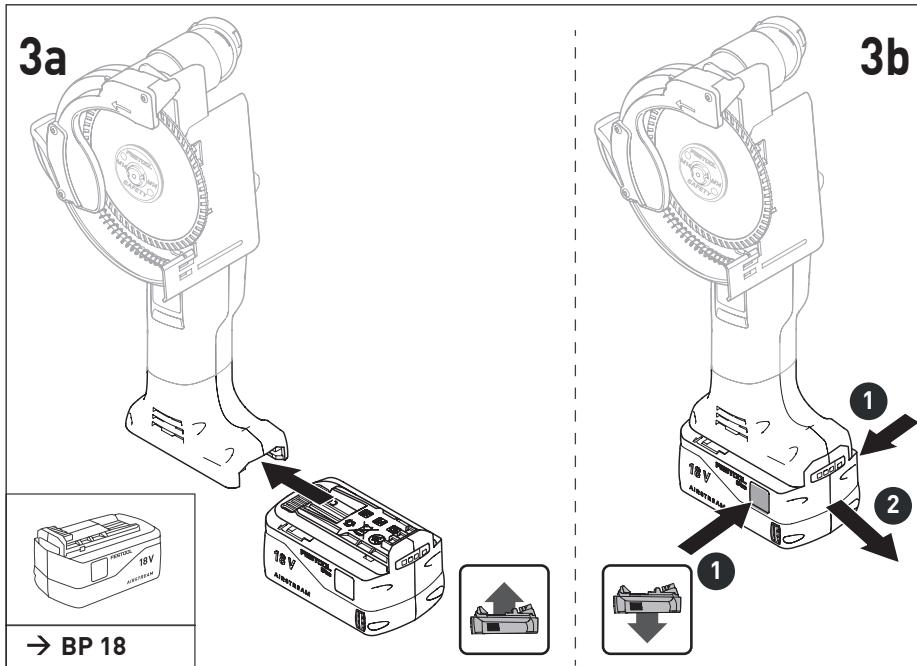
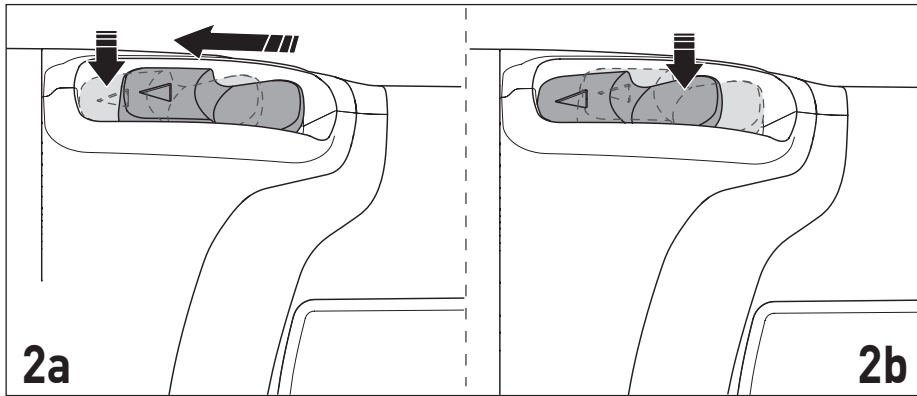


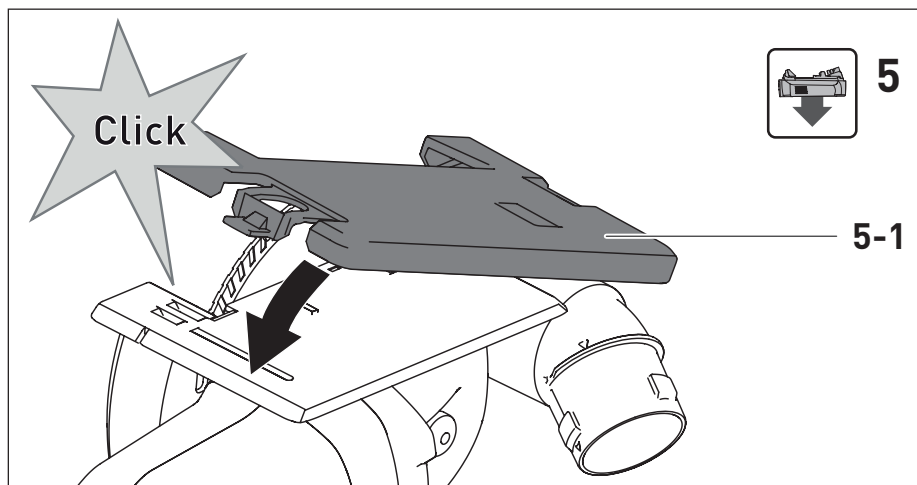
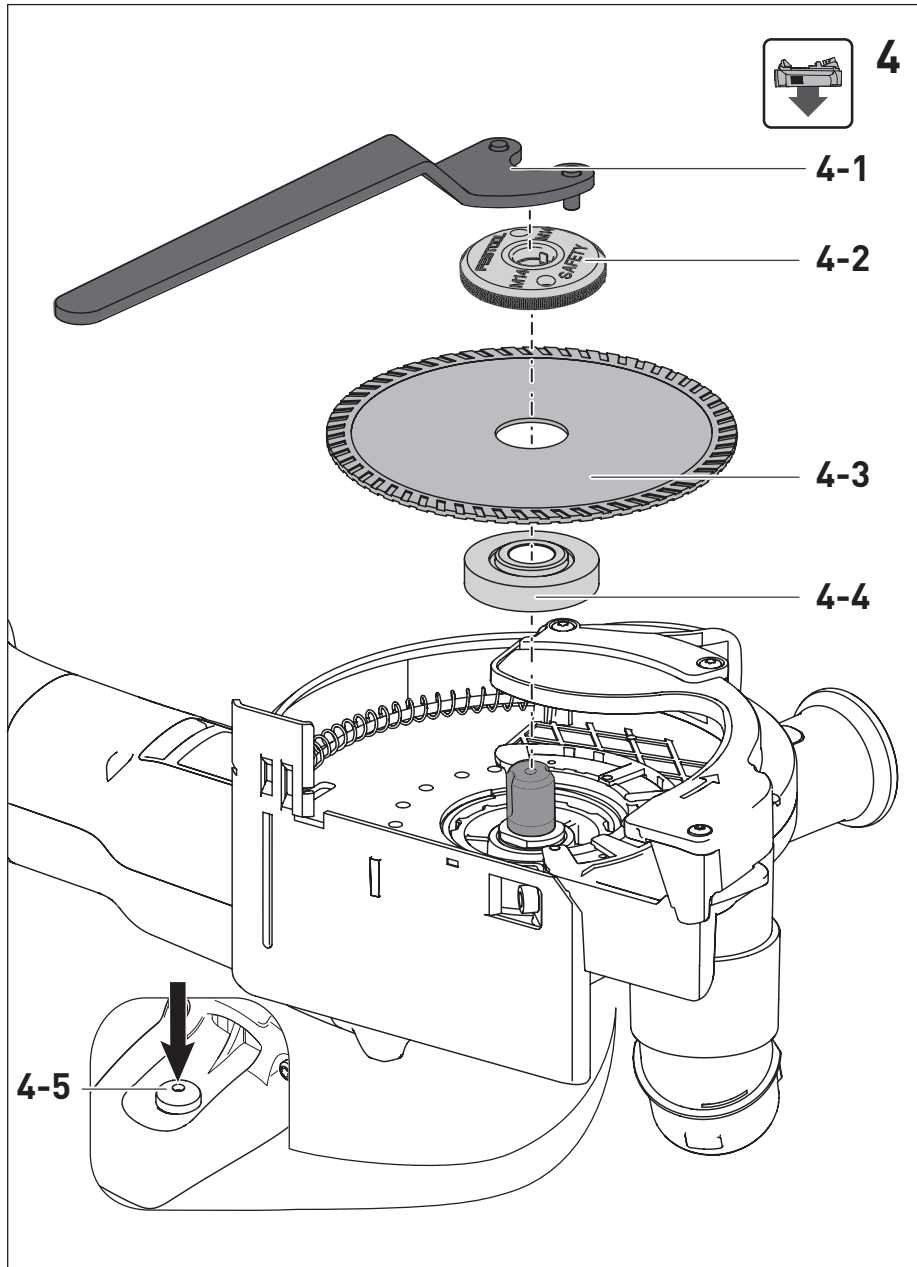
de	Originalbetriebsanleitung - Akku-Dia-Trennsystem	8
en	Original Instructions - Cordless diamond cutting system	18
fr	Notice d'utilisation d'origine - système de tronçonnage diamant sans fil	27
es	Instrucciones de uso originales - Sistema de tronzado Dia a batería	37
it	Istruzioni per l'uso originali - Sistema di taglio al diamante a batteria	47
nl	Originele gebruiksaanwijzing - accu-dia-doorslijpsysteem	57
sv	Originalbruksanvisning - Batteridrivnen diamantkap	67
fi	Alkuperäiset käyttöohjeet - akkukäyttöinen timanttikatkaisujärjestelmä	76
da	Original brugsanvisning - akku-dia-skæresystem	85
nb	Original bruksanvisning for batteridrevet diamantkappesystem	94
pt	Manual de instruções original - Sistema de corte Dia de bateria	103
ru	Оригинальное руководство по эксплуатации - Аккумуляторная алмазная отрезная система	113
cs	Originální návod k obsluze - akumulátorový diamantový dělicí systém	124
pl	Oryginalna instrukcja obsługi - akumulatorowy system cięcia z osprzętem diamentowym	133

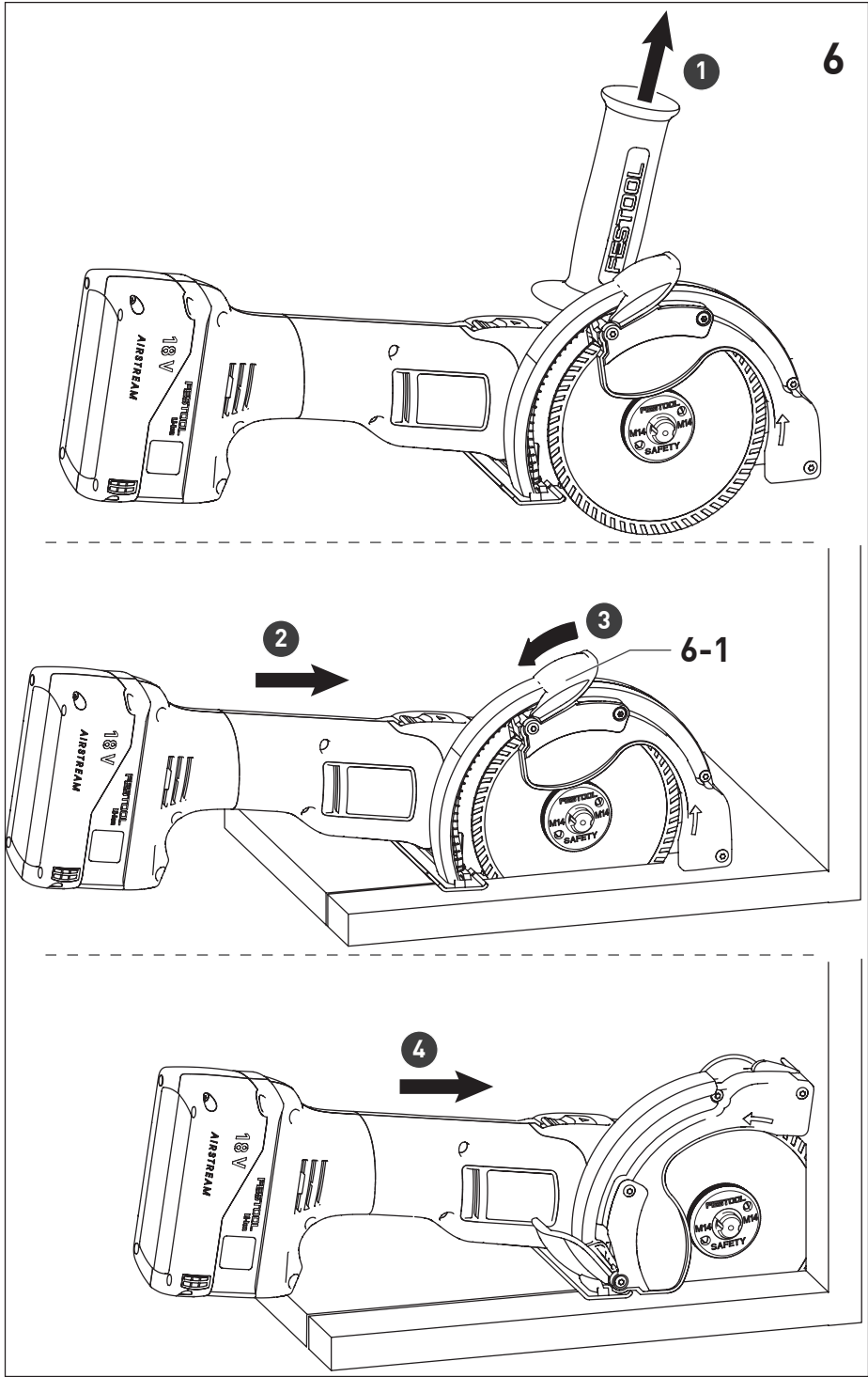
## DSC-AGC 18 FH











## *Declaration of Conformity*

We as the manufacturer **Festool GmbH, Wertstraße 20, 73240 Wendlingen, Germany** declare under our sole responsibility that the product(s):

Designation: **Cordless diamond cutting system**  
Designation of Type(s): **DSC-AGC 18 FH**  
Serial number(s) <sup>1)</sup>: **204080**

fulfills all the relevant provisions of the following UK Regulations:

- S.I. 2008/1597 Supply of Machinery (Safety) Regulations 2008
- S.I. 2016/1091<sup>2)</sup> Electromagnetic Compatibility Regulations 2016
- S.I. 2017/1206<sup>3)</sup> Radio Equipment Regulations 2017
- S.I. 2012/3032 Restriction of the Use of Certain Hazardous Substances in Electrical and Electronic Equipment Regulations 2012

and are manufactured in accordance with the following designated standards:

- BS EN 60745-1:2009 + A11:2010
- BS EN 60745-2-3:2011+A13:2015
- BS EN 55014-1:2017<sup>2)</sup>
- BS EN 55014-2:2015<sup>2)</sup>
- EN 300 328:2016 V2.1.1<sup>3)</sup>
- EN 301 489-1:2017 V2.1.1<sup>3)</sup>
- EN 301 489-17:2017 V3.1.1<sup>3)</sup>
- BS EN IEC 63000:2018

<sup>1)</sup> in the specified serial number range (S-Nr.) from 400000000 – 499999999

<sup>2)</sup> valid in combination with battery pack BP 18 Li 5,2 AS, BP 18 Li 6,2 AS, BP 18 Li 3,1 C, BP 18 Li 4,0 HPC-AS

<sup>3)</sup> valid in combination with Bluetooth® battery pack BP 18 Li 5,2 ASI, BP 18 Li 6,2 ASI, BP 18 Li 3,1 CI, BP 18 Li 4,0 HPC-ASI



Place and date of declaration: Wendlingen, 31.03.2021

Signed on behalf of and in name of Festool GmbH

Markus Stark  
Head of Productdevelopment

Ralf Brandt  
Head of Productconformity

**Akku-Dia-Trennsystem**      **Seriennummer** <sup>1)</sup>  
**Cordless diamond cutting**      **Serial number** <sup>1)</sup>  
**system**      **N° de série** <sup>1)</sup>  
**Système de tronçonnage**      **(T-Nr.)**  
**diamant sans fil**

DSC-AGC 18 FH      204080

**de EU-Konformitätserklärung.** Wir erklären in alleiniger Verantwortung, dass dieses Produkt mit allen relevanten Anforderungen folgender EU-Richtlinien übereinstimmt, und folgende Normen oder normative Dokumente zugrunde gelegt wurden:

**en EU Declaration of Conformity.** We declare under sole responsibility that this product complies with all the relevant requirements in the following EU Directives, and following standards and normative documents were applied:

**fr Déclaration de conformité de l'UE.** Nous déclarons, sous notre seule responsabilité, que ce produit satisfait à toutes les exigences pertinentes des directives UE suivantes et repose sur les normes ou documents normatifs suivants :

**es Declaración UE de conformidad.** Declaramos bajo nuestra responsabilidad que este producto cumple todos los requisitos relevantes de las siguientes directivas de la UE y que se han tomado como base las siguientes normas o documentos normativos:

**it Dichiarazione di conformità UE.** Dichiariamo sotto nostra unica responsabilità che il presente prodotto sia conforme a tutti i requisiti di rilevanza definiti dalle seguenti Direttive UE e che siano stati applicati le seguenti norme o i seguenti documenti normativi:

**nl EU-conformiteitsverklaring.** Wij verklaren en stellen ons ervoor verantwoordelijk dat dit product volledig voldoet aan alle volgende EU-richtlijnen en volgende normen of normatieve documenten daaraan ten grondslag gelegd werden:

**sv EU-försäkran om överensstämmelse.** Vi förklarar på eget ansvar att denna produkt uppfyller alla relevanta krav enligt följande EU-direktiv och baseras på följande normer eller normgivande dokument:

**fi EU-vaatimusten mukaisuusvakuutus.** Vakuutamme yksinomaisella vastuulla, että tämä tuote täyttää seuraavien EU-direktiivien kaikki olennaiset vaatimukset ja se on seuraavien standardien tai standardiasiakirjojen mukainen:

**da EU-overensstemmelseserklæring.** Vi erklærer med eneansvar, at dette produkt er i overensstemmelse med alle relevante krav i følgende EU-direktiver, og at følgende standarder eller normative dokumenter danner grundlag for det:

**nb EU-samsvarserklæring.** Vi erklærer under eneansvar at dette produktet oppfyller alle relevante krav i følgende EU-direktiver og at følgende standarder eller normative dokumenter er blitt lagt til grunn:

**pt Declaração de conformidade UE.** Sob nossa inteira responsabilidade, declaramos que este produto está de acordo com todas as exigências relevantes das seguintes diretivas UE, tendo sido tomadas por base as seguintes normas ou documentos normativos:

**ru Декларация о соответствии ЕС.** Мы со всей ответственностью заявляем, что данная продукция соответствует всем применимым требованиям следующих Директив ЕС, стандартов и нормативных документов:

**cs Prohlášení o shodě EU.** Prohlašujeme s veškerou odpovědností, že tento výrobek splňuje všechny příslušné požadavky následujících směrnic EU a že byly použity následující normy nebo normativní dokumenty:

**pl Deklaracja zgodności UE.** Niniejszym oświadczamy na własną odpowiedzialność, że produkt ten spełnia wszystkie obowiązujące wymogi następujących dyrektyw UE, norm lub dokumentów normatywnych.

2006/42/EC, 2014/30/EU<sup>2)</sup>, 2014/53/EU<sup>3)</sup>,  
2011/65/EU

EN 60745-1:2009 + A1:2010 + A11:2010,  
EN 60745-2-3:2011 + A2:2013 + A11:2014 +  
A12:2014 + A13:2015,  
EN 55014-1:2017<sup>2)</sup>, EN 55014-2:2015<sup>2)</sup>,  
EN 300 328:2016 V2.1.1<sup>3)</sup>,  
EN 301 489-1:2017 V2.1.1<sup>3)</sup>,  
EN 301 489-17:2017 V3.1.1<sup>3)</sup>, EN 50581:2012



Unterzeichnet für und im Namen von/  
Signed on behalf of and in name of/  
Signé pour et au nom de

**Festool GmbH**

Wertstr. 20, D-73240 Wendlingen  
GERMANY

Wendlingen, 2020-03-05

Markus Stark

Head of Product Development

Ralf Brandt

Head of Product Conformity

<sup>1)</sup> im definierten Seriennummer-Bereich (S-Nr.) von 40000000 - 49999999/  
in the specified serial number range (S-Nr.) from 40000000 - 49999999/  
dans la plage de numéro de série (S-Nr.) de 40000000 - 49999999

<sup>2)</sup> gilt in Kombination mit Akku/  
valid in combination with battery pack/  
valable en combinaison avec batterie  
BP 18 Li 5,2 AS, BP 18 Li 6,2 AS, BP 18 Li 3,1 C, BP 18 Li 4,0 HPC-AS

<sup>3)</sup> gilt in Kombination mit Bluetooth® Akku/  
valid in combination with Bluetooth® battery pack/  
valable en combinaison avec Bluetooth® batterie  
BP 18 Li 5,2 ASI, BP 18 Li 6,2 ASI, BP 18 Li 3,1 CI, BP 18 Li 4,0 HPC-ASI

## Contents

1	Symbols.....	18
2	Safety warnings.....	18
3	Intended use.....	22
4	Technical data.....	22
5	Parts of the machine.....	22
6	Commissioning.....	23
7	Battery pack.....	23
8	Settings.....	23
9	Working with the electric power tool.....	24
10	Acoustic warning signal.....	25
11	Accessories.....	25
12	Service and maintenance.....	25
13	Environment.....	26
14	General information.....	26

## 1 Symbols



Warning of general danger



Warning of electric shock



Read the operating instructions and safety instructions.



Wear ear protection.



Wear protective gloves.



Wear a dust mask.



Wear protective goggles.



Wear sturdy shoes.



Do not dispose of it with domestic waste.



Tip or advice



Handling instruction



Inserting the battery pack



Removing the battery pack



CE marking: Confirms the conformity of the power tool with the European Community directives.



UKCA marking: The United Kingdom Conformity Assessed symbol is a marking for products being placed on the market in the United Kingdom. It is a manufacturer's indication that the product is in conformance with the relevant regulations in the UK.

## 2 Safety warnings

### 2.1 General safety instructions



**WARNING! Read all safety warnings and all instructions.** Failure to follow the warnings and instructions may result in electric shock, fire and/or serious injury.

**Save all warnings and instructions for future reference.**

The term "power tool" in the warnings refers to your mains-operated (corded) power tool or battery-operated (cordless) power tool.

**Follow the operating manual for the charger and the battery pack.**

### 2.2 Machine-specific safety notices

#### Safety Warnings Common for Abrasive Cutting-Off Operations

- **This power tool is intended to function as a cut-off tool. Read all safety warnings, instructions, illustrations and specifications provided with this power tool.** Failure to follow all instructions listed below may result in electric shock, fire and/or serious injury.
- **Operations such as grinding, sanding, wire brushing or polishing are not recommended to be performed with this power tool.** Operations for which the power tool was not designed may create a hazard and cause personal injury.
- **Do not use accessories which are not specifically designed and recommended by the tool manufacturer.** Just because the accessory can be attached to your power tool, it does not assure safe operation.
- **The rated speed of the accessory must be at least equal to the maximum speed marked on the power tool.** Accessories running faster than their rated speed can break and fly apart.
- **The outside diameter and the thickness of your accessory must be within the capacity rating of your power tool.** Incorrectly sized accessories cannot be adequately guarded or controlled.



- **Threaded mounting of accessories must match the grinder spindle thread. For accessories mounted by flanges, the arbour hole of the accessory must fit the locating diameter of the flange.** Accessories that do not match the mounting hardware of the power tool will run out of balance, vibrate excessively and may cause loss of control.
  - **Do not use a damaged accessory. Before each use inspect the accessory such as abrasive wheels for chips and cracks, backing pad for cracks, tear or excess wear, wire brush for loose or cracked wires. If power tool or accessory is dropped, inspect for damage or install an undamaged accessory. After inspecting and installing an accessory, position yourself and bystanders away from the plane of the rotating accessory and run the power tool at maximum no-load speed for one minute.** Damaged accessories will normally break apart during this test time.
  - **Wear personal protective equipment. Depending on application, use face shield, safety goggles or safety glasses. As appropriate, wear dust mask, hearing protectors, gloves and workshop apron capable of stopping small abrasive or workpiece fragments.** The eye protection must be capable of stopping flying debris generated by various operations. The dust mask or respirator must be capable of filtering particles generated by your operation. Prolonged exposure to high intensity noise may cause hearing loss.
  - **Keep bystanders a safe distance away from work area. Anyone entering the work area must wear personal protective equipment.** Fragments of workpiece or of a broken accessory may fly away and cause injury beyond immediate area of operation.
  - **Hold the power tool by insulated gripping surfaces only, when performing an operation where the cutting accessory may contact hidden wiring.** Cutting accessory contacting a "live" wire may make exposed metal parts of the power tool "live" and could give the operator an electric shock.
  - **Never lay the power tool down until the accessory has come to a complete stop.** The spinning accessory may grab the surface and pull the power tool out of your control.
  - **Do not run the power tool while carrying it at your side.** Accidental contact with the spinning accessory could snag your clothing, pulling the accessory into your body.
  - **Regularly clean the power tool's air vents.** The motor's fan will draw the dust inside the housing and excessive accumulation of powdered metal may cause electrical hazards.
  - **Do not operate the power tool near flammable materials.** Sparks could ignite these materials.
  - **Do not use accessories that require liquid coolants.** Using water or other liquid coolants may result in electrocution or shock.
- Kickback and Related Warnings**
- Kickback is a sudden reaction to a pinched or snagged rotating wheel, backing pad, brush or any other accessory. Pinching or snagging causes rapid stalling of the rotating accessory which in turn causes the uncontrolled power tool to be forced in the direction opposite of the accessory's rotation at the point of the binding. For example, if an abrasive wheel is snagged or pinched by the workpiece, the edge of the wheel that is entering into the pinch point can dig into the surface of the material causing the wheel to climb out or kick out. The wheel may either jump toward or away from the operator, depending on direction of the wheel's movement at the point of pinching. Abrasive wheels may also break under these conditions. Kickback is the result of power tool misuse and/or incorrect operating procedures or conditions and can be avoided by taking proper precautions as given below.
- **Maintain a firm grip on the power tool and position your body and arm to allow you to resist kickback forces. Always use auxiliary handle, if provided, for maximum control over kickback or torque reaction during start-up.** The operator can control torque reactions or kickback forces, if proper precautions are taken.
  - **Never place your hand near the rotating accessory.** Accessory may kickback over your hand.
  - **Do not position your body in the area where power tool will move if kickback occurs.** Kickback will propel the tool in direction opposite to the wheel's movement at the point of snagging.

- **Use special care when working corners, sharp edges etc. Avoid bouncing and snagging the accessory.** Corners, sharp edges or bouncing have a tendency to snag the rotating accessory and cause loss of control or kickback.
- **Do not attach a saw chain woodcarving blade or toothed saw blade.** Such blades create frequent kickback and loss of control.

### Safety warnings specific for Grinding and Abrasive Cutting-Off Operations

- **Use only wheel types that are recommended for your power tool and the specific guard designed for the selected wheel.** Wheels for which the power tool was not designed cannot be adequately guarded and are unsafe.
- **The grinding surface of centre depressed wheels must be mounted below the plane of the guard lip.** An improperly mounted wheel that projects through the plane of the guard lip cannot be adequately protected.
- **The guard must be securely attached to the power tool and positioned for maximum safety, so the least amount of wheel is exposed towards the operator.** The guard helps to protect the operator from broken wheel fragments, accidental contact with wheel and sparks that could ignite clothing.
- **Wheels must be used only for recommended applications. For example: do not grind with the side of cut-off wheel.** Abrasive cut-off wheels are intended for peripheral grinding, side forces applied to these wheels may cause them to shatter.
- **Always use undamaged wheel flanges that are of correct size and shape for your selected wheel.** Proper wheel flanges support the wheel thus reducing the possibility of wheel breakage. Flanges for cut-off wheels may be different from grinding wheel flanges.
- **Do not use worn down wheels from larger power tools.** Wheel intended for larger power tool is not suitable for the higher speed of a smaller tool and may burst.

### Additional safety warnings specific for Abrasive Cutting-Off Operations

- **Do not “jam” the cut-off wheel or apply excessive pressure. Do not attempt to**

**make an excessive depth of cut.** Over-stressing the wheel increases the loading and susceptibility to twisting or binding of the wheel in the cut and the possibility of kickback or wheel breakage.

- **Do not position your body in line with and behind the rotating wheel.** When the wheel, at the point of operation, is moving away from your body, the possible kickback may propel the spinning wheel and the power tool directly at you.
- **When wheel is binding or when interrupting a cut for any reason, switch off the power tool and hold the power tool motionless until the wheel comes to a complete stop. Never attempt to remove the cut-off wheel from the cut while the wheel is in motion otherwise kickback may occur.** Investigate and take corrective action to eliminate the cause of wheel binding.
- **Do not restart the cutting operation in the workpiece. Let the wheel reach full speed and carefully re-enter the cut.** The wheel may bind, walk up or kickback if the power tool is restarted in the workpiece.
- **Support panels or any oversized workpiece to minimize the risk of wheel pinching and kickback.** Large workpieces tend to sag under their own weight. Supports must be placed under the workpiece near the line of cut and near the edge of the workpiece on both sides of the wheel.
- **Use extra caution when making a “pocket cut” into existing walls or other blind areas.** The protruding wheel may cut gas or water pipes, electrical wiring or objects that can cause kickback.

### 2.3 Further safety warnings

- **Do not use the power tool in the rain or in damp surroundings.** Moisture in the power tool may cause a short circuit and burning.
- Only guide the power tool into the material when it is switched on (running).
- For safety reasons, the workpiece must be clamped in a vice or another type of clamping device. Clamping a workpiece frees up both your hands for operating the power tool.
- Never perform work while standing on ladders.
- Do not use quick-action clamping nuts to clamp the diamond cutting disc.

- Use suitable tools with corresponding specifications for the material you are working with – see information on the diamond cutting disc and the packaging.
- Take a break after making multiple separating cuts or after carrying out intensive cutting tasks to allow the diamond cutting disc to cool down and to prevent it from overheating.
- Do not apply any pressure to the diamond cutting disc from the side.
- Diamond cutting discs are self-sharpening. A reduced cutting power and a circular, hot edge indicate that a diamond cutting disc is blunt. The tool can be sharpened by making short separating cuts in an abrasive material (sand-lime brick, asphalt or aerated concrete). Sporadic sparks are a typical occurrence when cutting through stone and are therefore not critical.
- Do not carry out cutting work above metallic objects, nails, screws or bolts.
- **Use appropriate detection devices to look for any hidden supply lines or consult your local utility company.** If the insertion tool makes contact with live cables, it can result in fire and electric shock. Damage to a gas pipe can lead to an explosion. Penetration of a water pipe can result in damage to property.
- **Harmful/toxic dust may be produced during your work (e.g. paint containing lead, certain types of wood, etc.). Only qualified experts may work on materials containing asbestos.** Contact with or inhalation of this dust may pose a risk for the operating personnel or persons in the vicinity. Comply with the safety regulations that apply in your country.



Wear a P2 respiratory mask to protect your health and use an appropriate dust extractor.

- **After machining mineral materials (e.g. gypsum): Blow out the inside of the power tool through the vents and the control element using dry, oil-free compressed air.** Otherwise, dust deposits may build up inside the power tool's housing and on the on/off switch and harden when exposed to humidity. This may impair the switching mechanism and cause the power tool to overheat.
- **Do not use power supply units or third-party battery packs to operate cordless**

**power tools. Do not use third-party chargers to charge the battery packs.** The use of accessories not expressly authorised by the manufacturer can result in electric shocks and/or serious accidents.

## 2.4 Safety warnings for sanding tools

- Sanding tools are fragile, which is why you must be extremely careful when handling them. The use of damaged, incorrectly clamped or inserted sanding tools is dangerous and can cause serious injuries.
- Ensure that the sanding tools are not exposed to any mechanical damage or harmful environmental conditions during storage.
- Handle and transport sanding tools with care.
- Pay attention to the information on the label or the sanding tool itself, as well as usage restrictions, safety warnings or other instructions. If any points are unclear when choosing sanding tools, the user must contact the manufacturer for information before using the tool.
- Sanding tools must be fitted in accordance with section .
- Only experienced staff are permitted to fit sanding tools.

## 2.5 Emission levels

The levels determined in accordance with EN 60745 are typically:

Sound pressure level	$L_{PA} = 86 \text{ dB(A)}$
Sound power level	$L_{WA} = 97 \text{ dB(A)}$
Uncertainty	$K = 3 \text{ dB}$



### CAUTION

**Noise generated when working**

**Risk of damage to hearing**

- Use ear protection.

Vibration emission level  $a_h$  (vector sum for three directions) and uncertainty  $K$  measured in accordance with EN 60745:

### Abrasive cutting

$$a_h \leq 2.5 \text{ m/s}^2$$

$$K = 2 \text{ m/s}^2$$

The specified emission levels (vibration, noise)

- are used to compare machines.

- They are also used for making preliminary estimates regarding vibration and noise load during operation.
- They represent the primary applications of the power tool.



### CAUTION

**The emission values may deviate from the specified values. This is dependent on how the tool is used and the type of workpiece being machined.**

- ▶ The actual load during the entire operating cycle must be evaluated.
- ▶ Depending on the actual load, suitable protective measures must be defined in order to protect the operator.

## 3 Intended use

The power tool is designed for abrasive cutting on concrete and stone materials without the use of liquid coolant or lubricant.

The power tool must only be used with Festool diamond cutting discs in accordance with EN 13236.

**Do not use this power tool for polishing or machining metal.**

This power tool is intended for use with BP Festool battery packs of the same voltage class.



The user is liable for improper or non-intended use.

## 4 Technical data

Cordless diamond cutting system	DSC-AGC 18 FH	
Motor voltage	18 V DC	
Speed (no-load)	4500–8500 rpm	
Speed settings	1	4500 rpm
	2	5300 rpm
	3	6100 rpm
	4	6900 rpm
	5	7700 rpm
	6	8500 rpm
Circumferential speed of sanding tool	80 m/s	
Grinding spindle thread	M 14	

Cordless diamond cutting system	DSC-AGC 18 FH	
Sanding tool diameter	125 mm	
Sanding tool thickness	max.	3.0 mm
	min.	1.0 mm
Weight as per EPTA procedure 01:2014	3.2 kg	

## 5 Parts of the machine

- [1-1] Extractor connector
- [1-2] Thread for auxiliary handle
- [1-3] Auxiliary handle
- [1-4] On/off switch
- [1-5] Retractor lever
- [1-6] Dust extraction attachment
- [1-7] Speed control
- [1-8] Insulated gripping surfaces (grey shaded area)
- [1-9] Spindle lock
- [1-10] Buttons for releasing the battery pack
- [1-11] Capacity button on battery pack
- [1-12] Capacity indicator

Accessories shown or described are not always included in the scope of delivery.

The specified illustrations appear at the beginning of the operating manual.

### 5.1 Electronics

#### Smooth start-up

The electronically controlled smooth start-up function ensures that the power tool starts up smoothly.

#### Speed regulator [1-7]

You can continuously adjust the speed within the speed range using the adjusting wheel. This enables you to optimise the speed to suit the respective material. Please also note the specifications on the sanding tools.

#### Constant speed

The preselected motor speed is kept constant through electronic control. This ensures a uniform speed even when under load.

#### Recoil protection

In the event of a sudden speed reduction, e.g. if the power tool becomes jammed in a separat-

ing cut, the motor is switched off immediately. To put the power tool back into operation, it must first be switched off and then on again.

### Restart protection

The built-in restart protection prevents the power tool from starting up again automatically if the power is disconnected during continuous use. To put the power tool back into operation, it must first be switched off and then on again.

### Overheating protection

In the event of overheating, the safety electronics system switches to cooling mode. The motor continues to run and the constant speed is deactivated. Let the machine cool down for approximately 10–20 seconds before using it and/or fully loading it again.

## 6 Commissioning

The dust extraction attachment is preassembled and must not be removed or repositioned.

### 6.1 Holding the power tool correctly

Hold the power tool with both hands using the insulated gripping surfaces [1-8]: One hand on the motor housing behind the switch and the other on the auxiliary handle [1-3].

### 6.2 Switch on/off

#### Switching on [2a]

- ▶ Push the on/off switch [1-4] forwards. Pressing the front part of the switch at the same time locks the on/off switch.

*On/off switch [1-4] is locked and the power tool is switched on.*

- ⓘ Only position the tool on the material once it has reached operating speed.

#### Setting the speed

The speed can be adapted in six settings depending on the workpiece requirements.

- ▶ Set the speed regulator [1-7] to the required setting.

#### Switching off [2b]

- ▶ Lift the power tool from the processed material.
- ▶ Press the rear part of the on/off switch [1-4].

*Lock is released and the power tool is switched off.*



## WARNING

### Risk of injury from kickback, ejected parts





- ▶ Before setting down the power tool, wait until the rotating sanding tool has come to a complete stop.
- ▶ Set the power tool down flat on the dust extraction attachment.

## 7 Battery pack

- ▶ Inserting the battery pack [3a]
- ▶ Removing the battery pack [3b]

### 7.1 Capacity display

The capacity display [1-12] indicates the charge of the battery pack for approx. 2 seconds after the button [1-11] is pressed:

	70-100%
	40-70%
	15-40%
	< 15% *

\* **Recommendation:** Charge the battery pack before any further use.

- ⓘ Further information about the charger and battery pack with capacity indicator can be found in the corresponding operating manual.

## 8 Settings



## WARNING

### Risk of injury

- ▶ Remove the battery pack from the power tool before performing any work on the power tool.

### 8.1 Fitting the auxiliary handle [1-3]



Always use the auxiliary handle to ensure a safe working posture that prevents you from tiring.

The special "VIBRASTOP" design of the auxiliary handle helps to reduce vibrations.

- ▶ Screw in the auxiliary handle [1-3] on the side of the thread [1-2] according to the working method.

## 8.2 Changing the diamond cutting disc [4]



### WARNING


#### Risk of accident, risk of injury

- ▶ Only use the safety clamping nut provided. Do not use quick-action clamping nuts.
- ▶ Only use diamond cutting discs that are recommended by the manufacturer and flanges that come supplied.
- ▶ Do not use cutting discs that contain binders.
- ▶ Only use undamaged safety clamping nuts.



### CAUTION

#### Risk of injury from hot and sharp tool

- ▶ Do not use any vibrating, blunt or defective sanding tools.
- ▶ Do not use sanding tools that have been exposed to extreme humidity, moisture or high temperatures prior to installation.
- ▶ Wear protective gloves.
- ▶ Remove the battery pack from the power tool.
- ▶ Clean the flange [4-4], safety clamping nut [4-2] and the cutting surfaces of the diamond cutting disc [4-3].
- ▶ Place the flange [4-4] with the ridge on the spindle.
- ▶ Ensure that the centring ridge of the flange fits exactly into the opening in the disc and that the form-fit connection between the power tool/spindle and flange matches. Ensure that the diameter of the power tool spindle matches the hole in the sanding tool.
- ▶ Adhere to the stipulated rotational direction of the sanding tool (arrow on the sanding tool = arrow on the tool housing).
- ▶ Place the diamond cutting disc [4-3] on the spindle and flange.
- ▶ Position the safety clamping nut [4-2] on the diamond cutting disc, press the spindle lock [4-5] and firmly tighten the safety clamping nut using the face wrench [4-1].
- ▶ Check that the sanding tool is securely attached and fitted to the power tool.
- ▶  Before switching on the power tool, check to ensure that the diamond cutting disc and the moving part of the dust extraction attachment [1-6] can move freely. Let new discs run for around one minute with no load as a test.

Removal is performed in reverse sequence to assembly.

## 8.3 Plate [5]

The plate [5-1] reduces the risk of damaging the workpiece surfaces.

- ▶ Slide the plate onto the front edge of the dust extraction attachment's guide table and lock into place.

## 8.4 Dust extraction



### WARNING

#### Health hazard posed by dust

- ▶ Always work with an extractor.
- ▶ Comply with national regulations.

A Festool mobile dust extractor with a suction hose diameter of 27 mm or 36 mm (36 mm recommended due to the reduced risk of clogging) can be connected to the extractor connector [1-1].

The adapter on a suction hose with a diameter of 27 mm is inserted into the angle adapter. The adapter on a suction hose with a diameter of 36 mm is attached to the angle adapter.

**Recommendation:** Use an antistatic extractor hose. This helps reduce the electric charge.

## 9 Working with the electric power tool



### WARNING

#### Risk of injury

- ▶ Only guide the power tool into the material when it is switched on (running).
- ▶ Always secure the workpiece in such a manner that it cannot move.
- ▶ Keep your hands away from the rotating sanding tools.



### WARNING

#### Risk of injury from the fragile sanding tool

- ▶ Ensure that the sanding tool's expiry date has not been exceeded.



### WARNING

#### Risk of injury due to moving workpiece

- ▶ Ensure that the workpiece is secure.



## WARNING

### Risk of injury from overhead work

- ▶ Always wear safety glasses for overhead work.
- ▶ Wear a P2 respiratory mask.

**i** The power tool can be placed down flat on the dust extraction attachment when not in use.

- ▶ Remove the sanding tool from the power tool for transport.

### 9.1 Abrasive cutting

- ▶ Always guide the sanding tool through the workpiece in a straight line.  
Ensure that the sanding tool does not tilt and that it is not loaded at an angle or from the side.
- ▶ Ensure that the plate lies flat on the workpiece.

### 9.2 Cuts near edges [6]



## WARNING

### Risk of injury from exposed sanding tools

- ▶ With the exception of cuts near edges, the dust extraction attachment must only be used in the locked position and with the auxiliary handle.
- ▶ **1** Remove the auxiliary handle.
- ▶ Check to ensure that the moving part of the dust extraction attachment can be moved freely using the retractor lever and that it automatically returns to its starting position.
- ▶ Hold the power tool in your right hand.
- ▶ **2** Switch on the power tool and position it on the workpiece.
- ▶ **3** Unlock the retractor lever [6-1] for the dust extraction attachment with your left hand just before you reach the wall.
- ▶ **4** Use the retractor lever to retract the moving part of the dust extraction attachment while continuing to cut so that you can get as close to the wall as possible.  
This ensures that the dust extraction system delivers maximum performance.
- ▶ After the cutting work is complete, return the dust extraction attachment to its starting position using the retractor lever.

## 10 Acoustic warning signal

If the power tool switches off because of subsequent operating statuses, no warning signal sounds when it switches on.

### Battery pack not accepted

- Insert the correct battery pack model.

### Battery pack empty

- Change the battery pack.
- Charge the battery pack.

### Battery pack fault

- Change the battery pack.
- Use the charger to check that the battery pack is fully functional once it has cooled down.

### Battery pack overheated

- Let the battery pack cool down.

### Power tool overheated

- The power tool must cool down before it can be started again.

### Power tool fault

- Contact a Festool service workshop or specialist dealer.

### Power tool jammed

- Eliminate the cause of the jam.

**i** If the power tool switches off when it becomes jammed, no warning signal sounds.

## 11 Accessories

**Always use original Festool tools and accessories.** Using low-quality tools or accessories from other manufacturers may increase the risk of injury and seriously unbalance the machine, decreasing the quality of the working results and accelerating power tool wear.

Refer to the Festool catalogue for the order numbers of accessories and tools or find them online at [www.festool.co.uk](http://www.festool.co.uk).

## 12 Service and maintenance



## WARNING

### Risk of injury, electric shock

- ▶ Always remove the battery pack from the power tool before performing any maintenance or service work.
- ▶ All maintenance and repair work that requires the power tool to be opened up should always be carried out by an authorised service workshop.



**Customer service and repairs** must only be carried out by the manufacturer or service workshops. Find the nearest address at:

[www.festool.co.uk/service](http://www.festool.co.uk/service)



Always use original Festool spare parts. Order no. at:

[www.festool.co.uk/service](http://www.festool.co.uk/service)

To ensure constant air circulation, always keep the cooling air openings in the motor housing clean and free of blockages.

When machining mineral materials (e.g. gypsum, etc.), dust deposits may build up in the power tool housing and on the on/off switch and harden when exposed to humidity. This may impair the switching mechanism and cause the power tool to overheat.

- After each machining process, blow out the inside of the power tool through the vents and the on/off switch using dry, oil-free compressed air.

Clean the sanding tools after use.

Keep the contacts on the power tool, charger and battery pack clean.

If the dust extraction attachment does not automatically return to its starting position, open and close it repeatedly to clean it. If the fault cannot be rectified, send the power tool to the customer service department.

## 13 Environment



**Do not dispose of the device in the household waste!** Recycle devices, accessories and packaging. Observe applicable national regulations.

**EU only:** In accordance with the European Directive on waste electrical and electronic equipment and implementation in national law, used power tools must be collected separately and handed in for environmentally friendly recycling.

**Information on REACH:** [www.festool.co.uk/reach](http://www.festool.co.uk/reach)

## 14 General information

### Imported into the UK by

Festool UK Ltd  
1 Anglo Saxon Way  
Bury St Edmunds  
IP30 9XH  
Great Britain

## 14.1 Bluetooth®

The Bluetooth® word mark and the logos are registered trademarks of Bluetooth SIG, Inc.; they are used by TTS Tooltechnic Systems AG & Co. KG, and therefore by Festool, under licence.