



*Woodworking machinery at its best!*

**8" BENCH GRINDER  
OWNERS MANUAL  
MODEL: BG8**



**Charnwood Machinery Ltd, Cedar Court, Walker Road,  
Bardon Hill, Leicestershire, LE67 1TU  
Tel. 01530 516 926 Fax. 01530 516 929  
email: [sales@charnwood.net](mailto:sales@charnwood.net) website: [www.charnwood.net](http://www.charnwood.net)**

# GENERAL SAFETY RULES



**WARNING:** Do not attempt to operate the machine until you have read thoroughly and understood completely all instructions, rules, etc. contained in this manual. Failure to comply may result in accidents involving fire, electric shock, or serious personal injury. Keep this owner's manual and review frequently for continuous safe operation.

1. Know your machine. For your own safety, read the owner's manual carefully. Learn its application and limitations, as well as specific potential hazards pertinent to this machine.
2. Make sure all tools are properly earthed.
3. Keep guards in place and in working order. If a guard must be removed for maintenance or cleaning, make sure it is properly replaced before using the machine again.
4. Remove adjusting keys and spanners. Form a habit of checking to see that the keys and adjusting spanners are removed from the machine before switched it on.
5. Keep your work area clean. Cluttered areas and workbenches increase the chance of an accident.
6. Do not use in dangerous environments. Do not use power tools in damp or wet locations, or expose them to rain. Keep work areas well illuminated.
7. Keep children away. All visitors should be kept a safe distance
8. from the work area.
9. Make workshop childproof. Use padlocks, master switches and remove starter keys.
10. Do not force the machine. It will do the job better and be safer at the rate for which it is designed.
11. Use the right tools. Do not force the machine or attachments to do a job for which they are not designed. Contact the manufacturer or distributor if there is any question about the machine's suitability for a particular task.
12. Wear proper apparel. Avoid loose clothing, gloves, ties, rings, bracelets, and jewellery which could get caught in moving parts. Non-slip footwear is recommended. Wear protective hair covering to contain long hair.
13. Always use safety glasses. Normal spectacles only have impact resistant lenses. They are not safety glasses.
14. Do not over-reach. Keep proper footing and balance at all times.
15. Maintain the machine in good condition. Keep the machine clean for best and safest performance. Follow instructions for lubrication and changing accessories.
16. Disconnect the machine from power source before servicing and when changing the blade.
17. Never leave the machine running unattended. Turn the power off. Do not leave the machine until it comes to a complete stop.
18. Do not use any power tools while under the effects of drugs, alcohol or medication.
19. Always wear a face or dust mask if operation creates a lot of dust and/or chips. Always operate the tool in a well ventilated area and provide for proper dust removal. Use a suitable dust extractor.



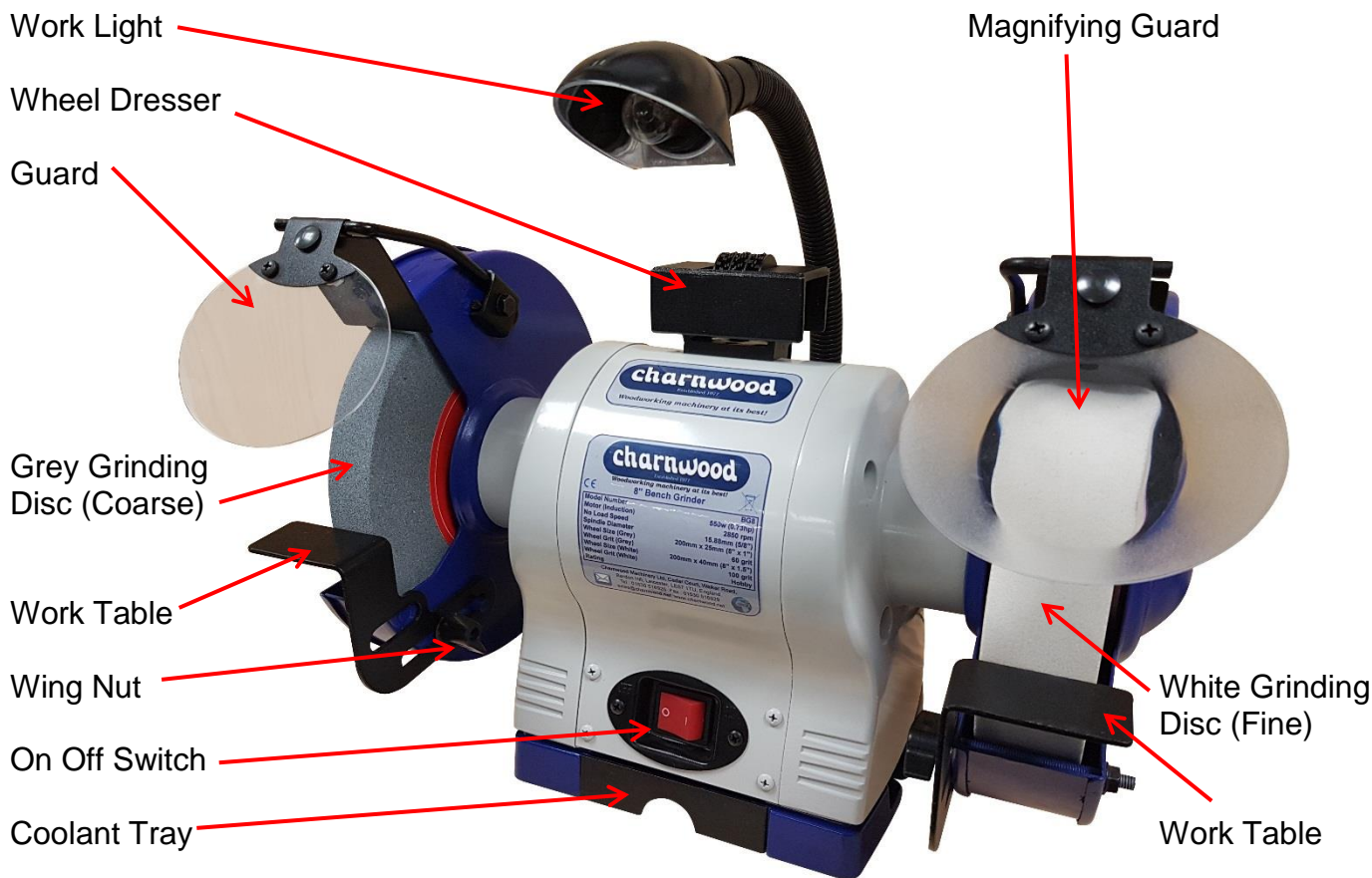
**Risk of Injury: Never Reach Into A moving Part**

**Always Wear Eye Protection**

**Always Wear A Dust Mask**

**Always Wear Ear Protection**

# Overview of BG8 8" Bench Grinder



## Specification

Motor (Induction) 220-240v, 50Hz	550w (0.73hp)
Maximum Continuous Runtime S2	30 minutes
No Load Speed	2850rpm
Spindle Diameter	15.88mm (5/8")
Wheel Size (Grey)	200mm x 25mm (8" x 1")
Wheel Grit (Grey)	60 grit
Wheel Size (White)	200mm x 40mm (8" x 1.5")
Wheel Grit (White)	100 grit
Sound Pressure Level	69.9 db (A)
Sound Power Level	81.1 db (A)
Weight	18kg
Manufacturer's Warranty	1 year
Rating	Hobby

## Rating Description

**Hobby:** Suitable for Weekend DIY'ers and woodworking enthusiasts.

Generally lighter weight machines with lower power ratings and smaller tooling capacities. Typically only ever used by one person for short periods of time or longer periods of time infrequently. Machinery should be well maintained in a clean, dry environment such as a home workshop, garage or timber shed.

**Expected maximum use of 100 hours annually.**

**Please Note:** Using a product in excess of its rating will void the manufacturer's free warranty.

# Unpacking

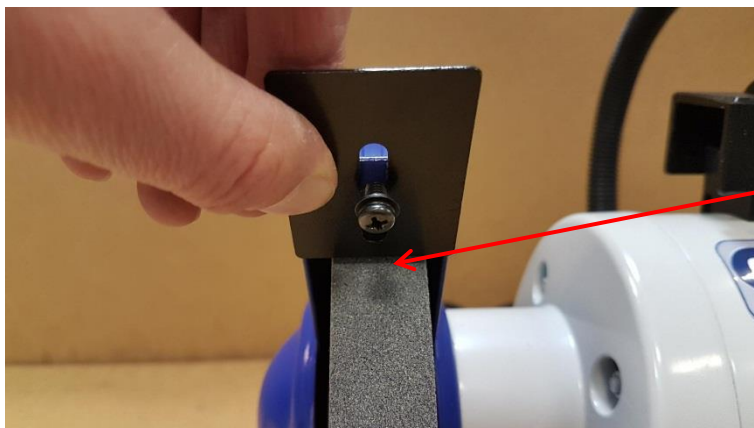


All items are contained in one cardboard carton.



Carefully unpack and check that all items are included as in the photograph.

# Assembly



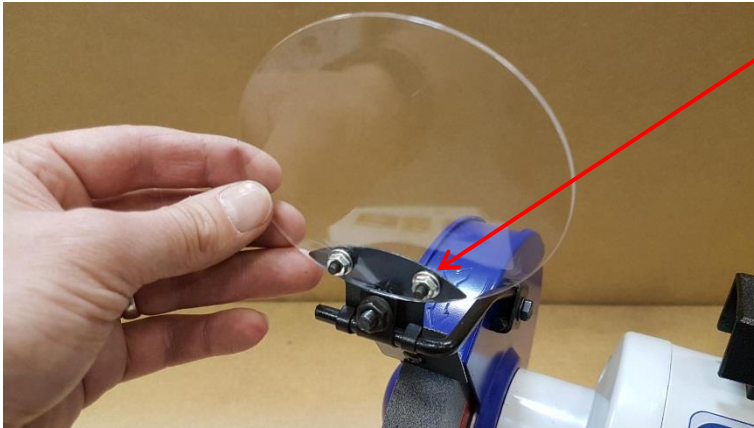
Attach part #9, left hand spark guard, using the M4 x 10 pan head bolt, M4 locking washer and M4 washer.

The gap between the grey grinding wheel and the bottom of the spark guard should not exceed 2mm.

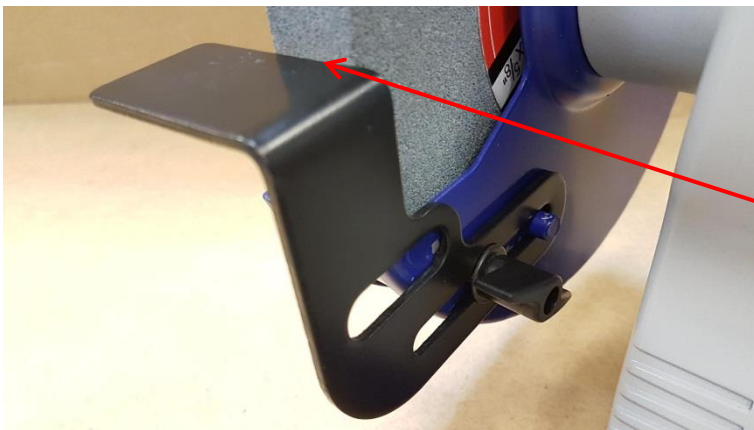
It should be adjusted during the life of the wheel to maintain this gap.



Attach part #12, left hand guard arm, using the M6 x 14mm Hex bolt and M6 Washer.



Attach the Eye Guard Bracket onto the Eye Guard using the 2 x M3 screws and nuts. Slide the assembled part #35, eye guard, onto part #12, left hand guard, and tighten using the M6 nut.



Attach part #60, left hand table, by placing the lower slot over the lug and then lock in place using the M8 wingnut and M8 washer.

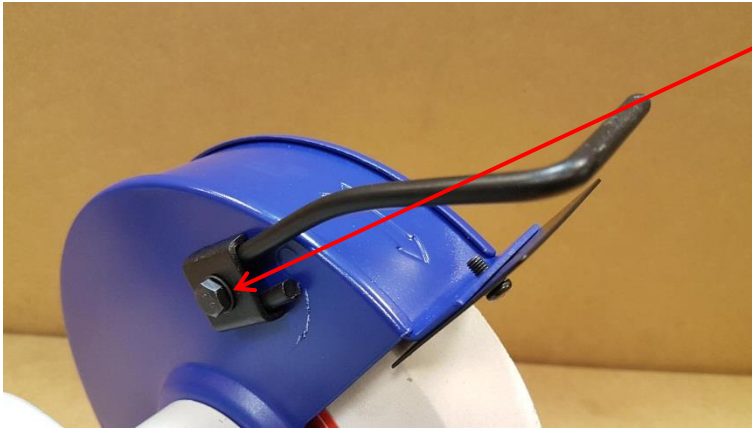
The gap between the table and the grey grinding disc should not be more than 2mm.

It should be adjusted during the life of the wheel to maintain this gap.

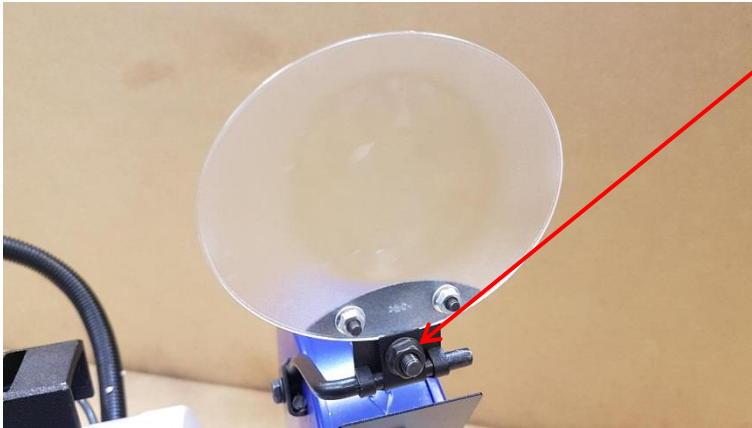


Attach part #34, right hand spark guard, using the M4 x 10 pan head bolt, M4 locking washer and M4 washer.

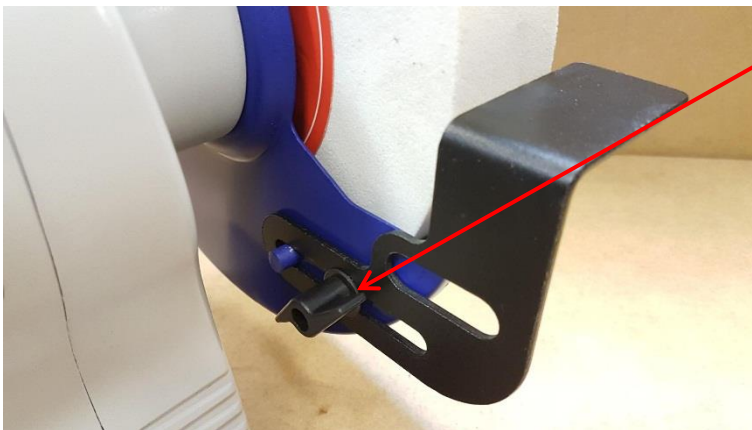
The gap between the white grinding wheel and the bottom of the bracket should not exceed 2mm.



Attach part #59, right hand guard arm, using the M6 x 14mm Hex bolt and M6 Washer.



Attach the Eye Guard Bracket onto the Eye Guard using the 2 x M3 screws and nuts. Slide the assembled part #36, magnifying eye guard, onto part #59, right hand guard, and tighten using the M6 nut.

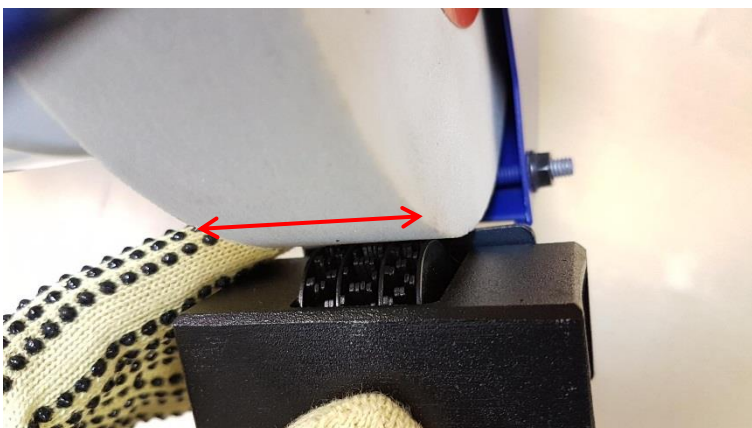


Attach part #58, right hand table, by placing the lower slot over the lug and then lock in place using the M8 wingnut and M8 washer.

The gap between the table and the white grinding disc should not be more than 2mm.

Spin the wheels by hand to make sure they are not catching on the tables or brackets.

## Setting Up



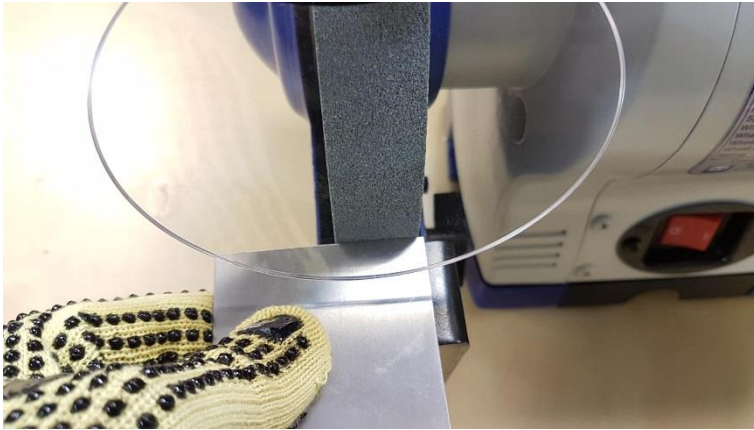
Spin the wheels by hand to check they run true.

If not, turn the grinder on and wait for it run to full speed.

Wearing gloves, hold the wheel dresser firmly onto the work table then move forward lightly onto the grinding wheel, without creating sparks.

Move sideways over the entire width of the wheel.

# Using The Grinder



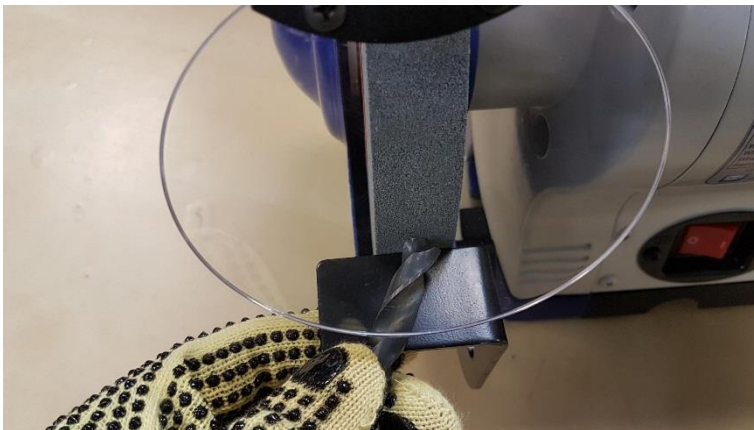
To start the grinder, set the On/Off switch position to: 1

Wait for the motor to reach its maximum speed of rotation. Only then should you begin grinding.

To stop the grinder, set the On/Off switch position to: 0

Be aware the motor will take some time to come to rest.

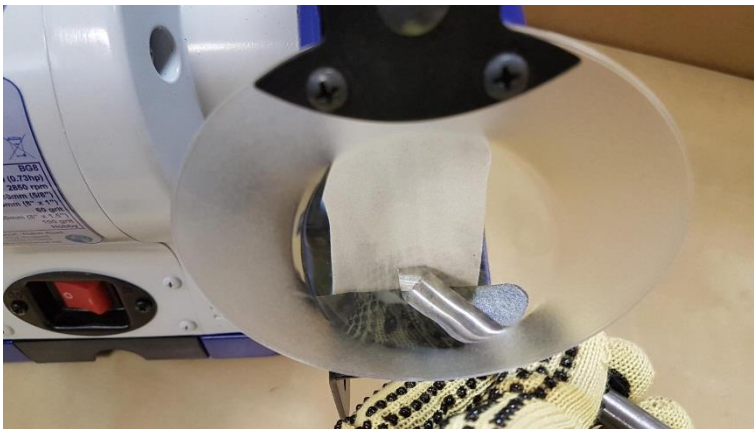
**CAUTION:** Do not touch moving parts.



Exert only moderate pressure on the workpiece so that it can be machined at constant speed.

Instead of accelerating your work, high pressure will cause the drive unit to slow down and even stop, thus overloading the motor.

For your own safety, it is essential to hold small pieces with a pair of locking pliers.



Place the workpiece onto the workpiece support and slowly guide the workpiece towards the grinding wheel at the desired angle, to the point where the workpiece and grinding wheel make contact.

Move the workpiece slightly back and forth to produce an optimal grinding result.

This way the grinding wheel will be evenly worn.



Allow the workpiece to cool down occasionally.



The machine includes an integral tray which should be half filled with water.

If the ground edge turns bluish black it is overheating and should be regularly dipped into the cooling tray.

The white stone wheel is a material designed to prevent heat building up and should be used when ever heat is an issue.

## Maintenance



TO REPLACE THE GREY STONE

Disconnect from the power source.

Using a 10mm spanner remove the three nuts from the stone guard cover.

Remove the side cover.



Grasp the stone using a cloth.

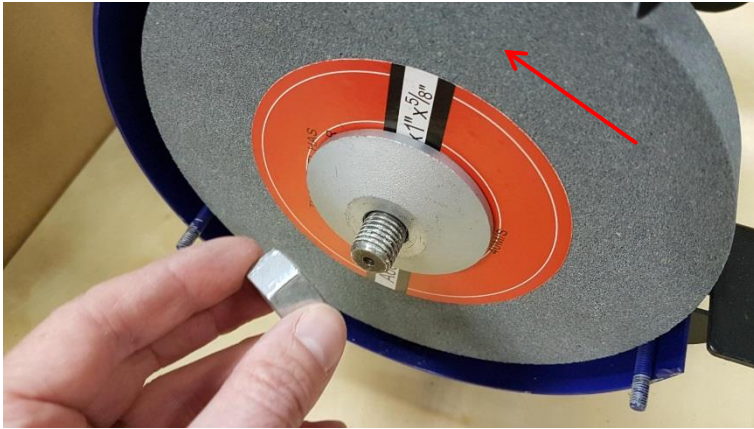
Use a 24mm spanner to loosen the nut, remember undo the nut in the direction of the stones rotation as indicated by the arrow on the guard cover.



Remove the plate flange and carefully remove the stone.

Clean the interior stone guard.





Inspect the new stone for cracks and damage to either the front face or the edges before fitting.

Carefully slide the stone onto the shaft, replace the plate flange, the nut.

Tighten against the rotation of the stone.

CAUTION: Do not overtighten.



### TO REPLACE THE WHITE STONE

Disconnect from the power source.

Using a 10mm spanner remove the three nuts from the stone guard cover.

Remove the side cover.

Grasp the stone using a cloth.

Use a 24mm spanner to loosen the nut, remember undo the nut in the direction of the stones rotation as indicated by the arrow on the guard cover.

Remove the plate flange and carefully remove the stone.

Clean the interior stone guard.



Inspect the new stone for cracks and damage to either the front face or the edges before fitting.

Carefully slide the stone onto the shaft, replace the plate flange, the nut and tighten against the rotation of the stone.

CAUTION: Do not overtighten.



# Troubleshooting

Problem	Cause	Remedy
Machine does not start	Blown Fuse in plug	Replace Fuse
	Loose switch terminal	Inspect back of switch
	Faulty switch	Replace switch
Ground Edge turns bluish black	Edge has overheated	Regularly dip the edge into water to cool it
	Grey wheel creates more heat	Switch to the white wheel
Wheels not running true	Wheels not dressed	Use dressing tool to true wheels



Please dispose of packaging for the product in a responsible manner. It is suitable for recycling. Help to protect the environment, take the packaging to the local amenity tip and place into the appropriate recycling bin.



Only for EU countries

Do not dispose of electric tools together with household waste material!  
In observance of European Directive 2002/96/EC on waste electrical and electronic equipment (EEE) and its implementation in accordance with national law, electric tools that have reached the end of their life must be collected separately and returned to an environmentally compatible recycling facility.



Your local refuse amenity will have a separate collection area for EEE goods


## Declaration of Conformity for CE Marking

Charnwood Declare that Bench Grinder, Model BG8

Conforms with the following Directives: Machinery Directive 2006/42/EC  
EMC Directive 2014/30/EU

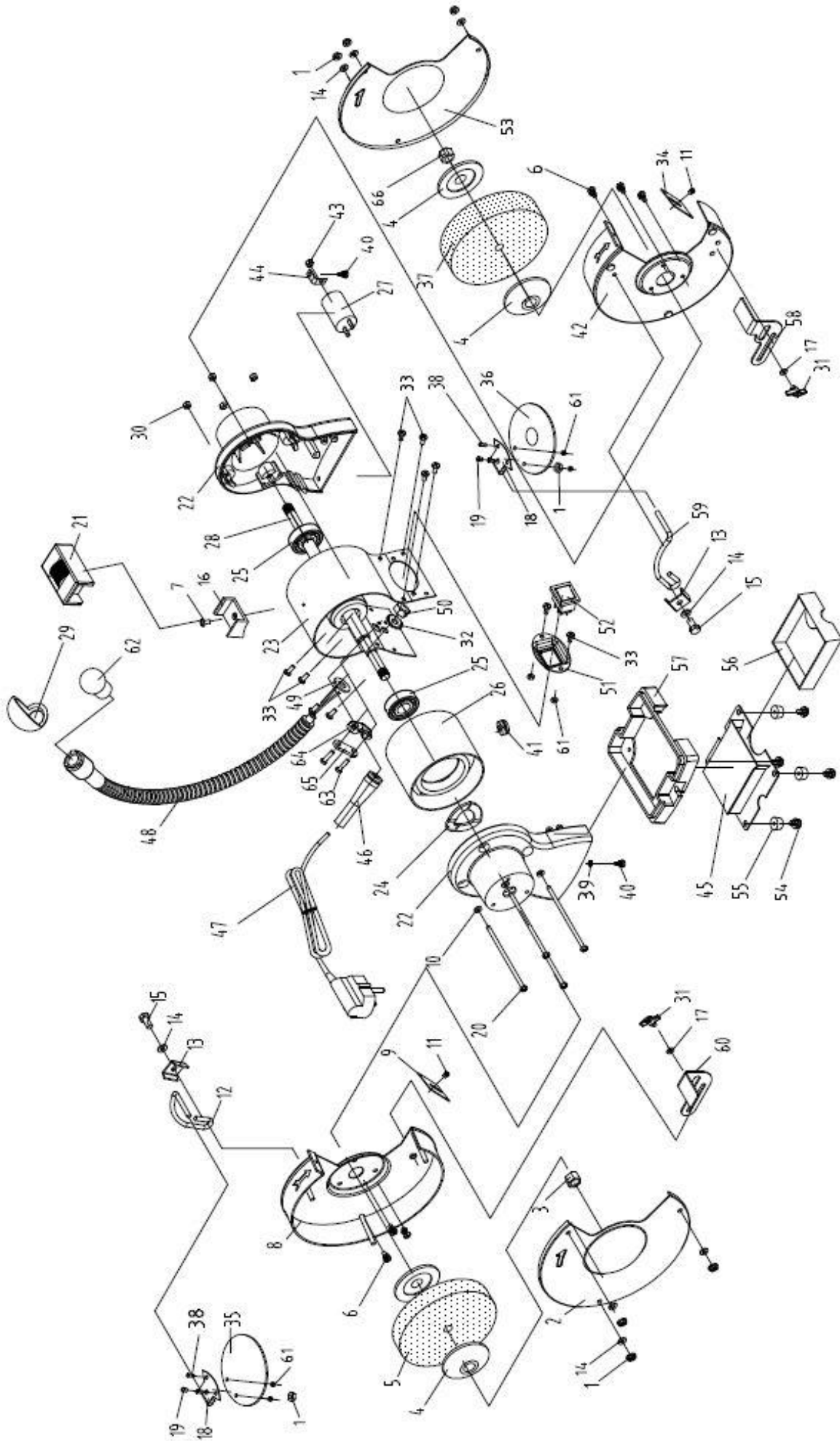
And further conforms to the machinery example for which the EC type examination Certificate No. AM50360060 and AE50358706 have been issued by TUV Rheinland LGA Products GmbH, Tillystrasse 2, 90431 Nurnberg, Germany.

I hereby declare that equipment named above has been tested and found to comply with the relevant sections of the above referenced specifications. The machinery complies with all essential requirements of the directive.

Signed:  Dated: 28/09/2016 Location: Leicestershire, UK

Richard Cook, Director

# Charnwood BG8 Parts Drawing



# Charnwood BG8 Parts List

Part No.	Description	Part No.	Description
001	Hex Bolt	002	Right Wheel Guard
003	Nut	004	Flange Washer
005	Grey Wheel 200mm x 20mm #60	006	Screw
007	Bolt	008	Right Wheel Housing
009	Right Spark Deflector	010	Washer
011	Screw	012	Right Eye Guard Arm
013	Eye Guard Arm Bracket	014	M6 Washer
015	M6 Hex Bolt	016	Wheel Dresser Housing
017	Washer	018	Eye Guard Bracket
019	Screw	020	Screw
021	Wheel Dresser	022	Right Motor Bracket
023	Motor Housing	024	Spring Washer
025	Bearing	026	Motor
027	Capacitor	028	Shaft
029	Bulb Guard	030	Nut
031	M8 Wingnut	032	Washer
033	Screw	034	Right Spark Deflector
035	Right Eye Guard	036	Right Eye Magnifying Guard
037	White Wheel 200mm x 40mm #100	038	Screw
039	Washer	040	Bolt
041	Wire Bushing	042	Right Wheel Housing
043	Nut	044	Capacitor Bracket
045	Coolant Tray Housing	046	Rubber Gromet
047	Power Cable	048	Flexible Light Shaft
049	Washer	050	Nut
051	Switch Housing	052	Switch
053	Right Wheel Guard	054	Bolt
055	Rubber Foot	056	Coolant Tray
057	Base	058	Right Work Table
059	Right Eye Guard Arm	060	Left Work Table
061	Nut	062	Bulb
063	Screw	064	Cable Clamp Bracket
065	Cable Clamp		



***Woodworking machinery at its best!***

Updated April 2019

**Charnwood Machinery Ltd, Cedar Court, Walker Road,  
Hilltop Industrial Estate, Bardon Hill, Leicestershire, LE67 1TU, England**

**Tel. 01530 516 926    Fax. 01530 516 929  
email: [sales@charnwood.net](mailto:sales@charnwood.net)    website: [www.charnwood.net](http://www.charnwood.net)**