

Operating Instructions

Workshop crane

 WK 1002 LP

 WK 2003

 WK 2002 LP



WK 2003

WK-SERIES

Imprint

Product identification

Workshop crane	Item Number
WK 1002 LP	6201421
WK 2003	6201423
WK 2002 LP	6201422

Manufacturer

Stürmer Maschinen GmbH
Dr.-Robert-Pfleger-Str. 26
D-96103 Hallstadt

Fax: 0049 (0) 951 - 96555-55

E-Mail: info@unicraft.de
Internet: www.unicraft.de

Information regarding the operating instructions

Genuine operating instructions
according to DIN EN ISO 20607:2019

Edition: 22.12.2021
Version: 1.01
Language: English

Author: MS

Indications regarding the Copyright

Copyright © 2021 Stürmer Maschinen GmbH, Hallstadt,
Germany.

Subject to technical modifications and error.

Content

1 Introduction	3
1.1 Copyright	3
1.2 Customer service	3
1.3 Limitation of liability	3
2 Safety	3
2.1 Symbol explanation	3
2.2 Obligations of the operating company	4
2.3 Requirements to staff	5
2.4 Personal protective equipment	5
2.5 General safety regulations	5
2.6 Safety information for operating personnel	6
2.7 Safety labels	6
2.8 Checks	6
2.9 Safety data sheets	6
3 Intended Use	6
3.1 Reasonably foreseeable misapplications	6
3.2 Residual risks	7
4 Technical Data	7
4.1 Type plate	7
5 Transport, packaging, storage	7
5.1 Transport	7
5.2 Packaging	8
5.3 Storage	8
6 Description of device	8
7 Assembly	9
7.1 WK 2003	9
7.2 WK 1002 LP	12
7.3 WK 2002 LP	14
8 Before commissioning	15
9 Operation	16
9.1 Operating conditions	16
9.2 Test run	16
9.3 Lift the load	16
9.4 Move the load	17
9.5 Lower the Load	17
10 Care, maintenance and repair	17
10.1 Pflege durch Reinigung	17
10.2 Maintenance and repair	17
11 Testing the Workshop Crane	18
12 Inspection and maintenance plan	19
13 Disposal, recycling of used devices	19
13.1 Decommissioning	19
13.2 Disposal of lubricants	19
14 Spare parts	20
14.1 Ordering spare parts	20
14.2 Spare parts drawings	21
15 EC-Declaration of Conformity	24
16 Wartungsplan	25

1 Introduction

You have made a good choice by purchasing the UNICRAFT Workshop Crane.

Read the operating manual thoroughly before commissioning the machine.

It gives you information about the proper commissioning, intended use and safe and efficient operation and maintenance of your Workshop crane.

The operating manual is part of the Workshop crane package. Always keep this operating manual in the location where your Workshop crane is being operated. All local accident prevention regulations and general safety instructions for the operating range of your Workshop crane must also be complied with.

1.1 Copyright

The contents of these instructions are copyright. They may be used in conjunction with the operation of the Workshop crane. Any application beyond those described is not permitted without the written approval of Stürmer Maschinen GmbH. For the protection of our products, we shall register trademark, patent and design rights, as this is possible in individual cases. We strongly oppose any infringement of our intellectual property

1.2 Customer service

Please contact your dealer if you have questions concerning your Workshop crane or if you need technical advice. They will help you with specialist information and expert advice.

Germany:

Stürmer Maschinen GmbH
Dr.-Robert-Pfleger-Str. 26
D-96103 Hallstadt

Repair service:

Fax: 0049 (0) 951 96555-111
Email: service@stuermer-maschinen.de

Spare part orders:

Fax: 0049 (0) 951 96555-119
Email: ersatzteile@stuermer-maschinen.de

We are always interested in valuable experience and knowledge gained from using the application-which then could be shared and be valuable to develop our products even further.

1.3 Limitation of liability

All information and notes in these operating instructions were summarised while taking applicable standards and rules, the state-of-the-art technology and our long-term knowledge and experiences into consideration.

In the following cases the manufacturer is not liable for damages:

- Non-observance of the instructions,
- Non-intended use,
- Use of non-expert and non-professional staff,
- Unauthorised modifications,
- Technical modifications,
- use of non-approved spare parts.

The actual scope of delivery may deviate from the explanations and presentations described here in case of special models, when using additional ordering options or due to latest technical modifications.

The obligations agreed in the delivery contract, the general terms and conditions as well as the delivery conditions of the manufacturer and the legal regulations at the time of the conclusion of the contract are applicable.

2 Safety

This section provides an overview of all important safety packages for the protection of operating personnel as well as for safe and fault-free operation. Other task-based safety notes are included in the paragraphs of the individual phases of life.

2.1 Symbol explanation

Safety instructions

The safety notes in these operating instructions are highlighted by symbols. The safety notes are introduced by signal words which express the concern of the risk.



DANGER!

This combination of symbol and signal words indicates an imminently dangerous situation which may lead to death or severe injury if not avoided.

WARNING!

This combination of symbol and signal words indicates a potentially dangerous situation which may lead to death or severe injury if not avoided.

CAUTION!

This combination of symbol and signal words indicates a potentially dangerous situation which may lead to slight or minor injury if not avoided.

ATTENTION!

This combination of symbol and signal words indicates a possibly dangerous situation which may lead to property and environmental damages if they are not avoided.



NOTE!

This combination of symbol and signal words indicates a potentially dangerous situation which may lead to material or environmental damage if not avoided.

Tips and recommendations



Tips and recommendations

This symbol highlights useful tips and recommendations as well as information for an efficient and trouble-free operation.

It is necessary to observe the safety notes written in these operating instructions in order to reduce the risk of personal injuries and damages to property.

2.2 Obligations of the operating company

Operator

The operator is the person who operates the machine himself for commercial purposes or who makes it available to a third party for use or application and who bears the legal product responsibility for the protection of the user, the personnel or third parties during operation.

Obligations of the operating company

If the workshop crane is used in the commercial sector, the operator of the workshop crane is subject to the legal obligations for occupational safety. Therefore, the safety instructions in this operating manual as well as the safety, accident prevention and environmental protection regulations applicable to the area of use of the workshop crane must be observed. The following applies in particular:

- The operating company must be informed about the applying industrial safety regulations and further analyse hazards resulting from the special working conditions at the place of use den Werkstatt-Kran. She must implement these in form of operating manuals for the operation den Werkstatt-Kran.
- During the entire lifetime des Werkstatt-Krans, the operating company must verify whether the operating manuals prepared by her correspond to the current status of the regulations, and must adapt these if necessary.
- The operating company must unambiguously regulate and determine the responsibilities for installation, operation, troubleshooting, maintenance and cleaning.
- The operating company must ensure that all persons who work with den Werkstatt-Kran, have read and understood this manual. Furthermore she must instruct the staff in regular intervals and inform them about the hazards.
- The operator must provide the necessary protective equipment to the staff and order the use of the necessary protective equipment in a binding way.

Furthermore the operating company is responsible to keep den Werkstatt-Kran always in a technically flawless state. Thus, the following applies:

- The operator must ensure that the maintenance intervals described in this manual are kept.
- The operator must have all safety devices checked regularly for their good working order and their integrity.

2.3 Requirements to staff

Qualifications

The different tasks described in this manual represent different requirements for the qualifications of the persons responsible for these tasks.



WARNING!

Danger in case of insufficient qualification of the staff!

Insufficiently qualified persons cannot estimate the risks while using den Werkstatt-Kran and expose themselves and others to the danger of severe or lethal injuries.

- Have all works only performed by qualified persons.
- Keep insufficiently qualified persons out of the working area.

Only persons reliable working procedures can be expected from, are allowed to perform all works. Persons the responsiveness of which is affected by e. g. drugs, alcohol or medication, are not allowed to work with the machine.

The qualifications of the personnel for the different tasks are mentioned below:

Operator

The operator is instructed by the operating company about the assigned tasks and possible risks in case of improper behaviour. Any tasks which need to be performed beyond the operation in the standard mode must only be performed by the operator if it is indicated in these instructions and if the operating company expressly commissioned the operator.

Qualified personnel

Due to their professional training, knowledge and experience as well as their knowledge of relevant regulations the specialist staff is able to perform the assigned tasks and to recognise and avoid any possible dangers themselves.

Manufacturer

Certain works may only be performed by specialist personnel of the manufacturer. Other personnel is not authorized to perform these works. Please contact our customer service for the execution of all arising work.

2.4 Personal protective equipment

The personal protective equipment serves to protect persons against impairments of safety and health while working. The staff member has to wear personal protective equipment while performing different tasks on and with the machine which are indicated in the individual paragraphs of these instructions.

The personal protective equipment is explained in the following paragraph:



Safety boots

Safety boots protect the feet from being crushed, falling parts and slipping over on slippery ground.



Protective clothes

Protective clothes are made of a tightly fitted fabric without the protruding parts of low tear strength.

2.5 General safety regulations



NOTE!

All local regulations (the latest valid version) which apply in the country where the device is used must be complied with

In Germany, currently
 BGV A1 - Principles of Prevention
 BGV A3 (VBG 4) - Electrical systems and equipment
 BGV D6 (VBG 9) - Cranes
 BGV D8 - Winching, lifting and pulling equipment
 BGR 500 (VBG 9a) - Load carrying devices used with lifting equipment
 EN 1494 - Mobile and portable lifting devices
 BGG 905 (ZH 1/27) - Principles for testing cranes
 EC Machine guidelines 2006/42/EC

Setup, retrofitting, maintenance and inspection activities may only be carried out by trained personnel when the machine is shut down.

Conversions and changes to the device are not permitted for safety reasons.

When carrying out hydraulic repairs on accumulator systems, the accumulator must be emptied first..

The operating personnel must always ensure that the maximum load capacity is not exceeded.

Do not stay under a suspended load, as loose objects may fall down at any time.

The transport and lifting of persons is prohibited. It is not permitted to enter the load-carrying equipment.

2.6 Safety information for operating personnel

No operational mode which could compromise the safety of den Werkstatt-Kran may be undertaken.

It is the responsibility of the operator to ensure that no unauthorised personnel work on den Werkstatt-Kran (e.g. also by actuating devices against unauthorised use).

It is the responsibility of the operator to check den Werkstatt-Kran at least once before use (once a day) for externally apparent damage or defects and to report any changes (including to the way the machine is operating) which are likely to compromise safety.

It is the responsibility of the operator to ensure that den Werkstatt-Kran is operated only in perfect order and condition.

It is the responsibility of the operator to insist that operating personnel must wear protective clothing wherever necessary.

Safety devices must never be dismantled or put out of operation (already here, concrete reference must be made to impending hazards, e.g. impending severe crushing, loss of eyesight, danger to life).

If it is necessary to de-install safety devices during set-up, repair and maintenance, the safety devices must be reassembled immediately after completion of the maintenance or repair work.

2.7 Safety labels

The following safety labels and symbols are attached:



Fig. 1: Safety labels I

- 1 Danger of crushing I 2 Suspended load warning I
- 3 Prohibition sign Staying under suspended loads prohibited



Fig. 2: General safety instructions and mandatory signs

The safety labels must not be removed. Damaged, missing or unrecognizable safety labels can lead to malfunctions, personal injury and property damage. They are to be replaced immediately.

2.8 Checks

Lifting equipment is subject to inspection. Therefore, the guidelines for round steel chains in hoist operation, the inspection guidelines as well as the inspection regulations according to DIN 685 part 5 Nov. 1981, UVV, BGV D8 (VBG 8 April 1997) and UVV, BGV D6 (VBG 9 April 2001) and DIN EN 818-7 of September 2002 published by the Employer's Liability Insurance Association, Central Office for Accident Prevention must be observed.

The crane inspection book must contain entries on repairs and inspections carried out (e.g. adjustment work on brake or coupling).

2.9 Safety data sheets

Safety data sheets on hazardous goods can be obtained from your specialist dealer or by calling +49 (0)951/96555-0. Specialist dealers can find safety data sheets in the download area of the partner portal.

3 Intended Use

The workshop crane is used exclusively for lifting and lowering loads up to the specified maximum load.

Intended use also includes compliance with all the information in these instructions.

3.1 Reasonably foreseeable misapplications

Any use beyond the intended use or any other use is considered misuse.

Possible misapplications can be:

- Transporting heavier loads than permitted
- Incorrect attachment of the workshop crane to the means of transport.
- Operation of the workshop crane without the functioning, foreseen safety devices.
- Failure to observe the maintenance instructions
- Non-observance of signs of wear and damage
- Service work by untrained or unauthorised personnel
- Careless handling of the workshop crane
- Installation of spare parts and use of accessories and equipment not approved by the manufacturer.
- Modifications to the workshop crane or the use of modified tool systems

Misuse of the workshop crane can lead to dangerous situations.

Stürmer Maschinen GmbH accepts no liability for constructive and technical modifications to the workshop crane.

Claims of any kind for damage due to improper use are excluded.

3.2 Residual risks

Even if all safety regulations are observed, residual risks remain when operating the workshop crane as described below.

All persons working with the workshop crane must be aware of these residual risks and follow the instructions that prevent these residual risks from leading to accidents or damage:

- During operation there is a risk of crushing the upper and lower limbs.
- During set-up and setup work, it may be necessary to dismantle on-site protective equipment. This creates various residual risks and potential dangers of which every operator must be aware.

4 Technical Data

	WK 1002 LP	WK 2003	WK 2002 LP
Load-bearing capacity	0,25 /0,5 / 0,75 /1,0	0,5 /1,0 / 1,5 /2,0	0,5 /1,0 / 1,5 /2,0
Boom length	1280/ 1190/ 1100/ 1010	1515/ 1335/ 1155/ 975	1515/ 1335/ 1155/ 975
Lifting height [mm]	25 to 2045 mm	25 to 2535 mm	25 to 2445 mm
Ground clearance [mm]	100 mm	190 mm	110 mm
Dimensions L x W x H [mm]	1600 x 1075 x 1480	1740 x 1060 x 1490	1840 x 1050 x 1400
Dimensions L x W x H [mm] folded	670 x 455 x 1520	850 x 558 x 1600	850 x 558 x 1600
Net weight approx.	71 kg	100,5 kg	102 kg
Oil/oil quantity Viscosity 10° - 30° CST / 40°C	0,6 l	2,3 l	0,6 l

4.1 Type plate


Werkstattkran Engine crane		CE
Typ/type	WK 2003	
Artikelnummer/item no.	6201423	
Tragkraft/capacity	0,5–2,0 t	
Gewicht/weight	90,5 kg	
Hub min.-max./lifting range	25 - 2240 mm	
Baujahr/year of manufacture		
Seriennr./serial number		
		Stürmer Maschinen GmbH Dr.-Robert-Pfleger-Str. 26, 96103 Hallstadt Deutschland / Germany

Fig. 3: Type plate WK 2003

5 Transport, packaging, storage

5.1 Transport

Delivery

Check the workshop crane after delivery for visible transport damage. If you discover any damage, report it immediately to the transport company or the dealer.

Transport

Improper transport of individual devices, unsecured devices stacked on top of each other or next to each other in packed or already unpacked condition is accident-prone and can cause damage or malfunctions for which we do not grant any liability or guarantee.

Transport the scope of delivery secured against shifting or tilting with a sufficiently dimensioned industrial truck to the installation site.



CAUTION!

Risk of injury due to equipment falling over and off the forklift truck, pallet truck or transport vehicle. Observe the instructions and information on the transport box.

Observe the total weight of the machine. Only use transport vehicles and load lifting equipment that can take the total weight of the machine.

General risks during internal transport



CAUTION: DANGER OF TIPPING!

The device may be lifted unsecured by a maximum of 2cm.

Employees must be outside the danger zone, the reach of loads. Warn employees and, if necessary, advise employees of the hazard.

Devices may only be transported by authorized and qualified persons. Act responsibly during transport and always consider the consequences. Refrain from daring and risky actions.

Gradients and descents (e.g. driveways, ramps and the like) are particularly dangerous. If such passages are unavoidable, special caution is required.

Before starting the transport check the transport route for possible danger points, unevenness and disturbances as well as for sufficient strength and load capacity.

Danger points, unevenness and disturbance points must be inspected before transport. The removal of danger spots, disturbances and unevenness at the time of transport by other employees leads to considerable dangers.

Careful planning of internal transport is therefore essential.



NOTE!

Protect the workshop crane from moisture.

5.2 Packaging

All used packaging materials and packaging aids are recyclable and should be taken to a materials recycling depot to be disposed of.

The delivery packaging is made of cardboard, so please dispose carefully by having it chopped up and given to the recycling collection.

The film is made of polyethylene (PE) and the cushioned parts of polystyrene (PS). Deliver these substances to a collection point for recyclable materials or to the waste disposal company which looks after your region.

5.3 Storage

Oil the workshop crane and store it in a frost-free and dry environment. Only store the workshop crane with the drain valve drained and closed. Do not place anything on the workshop crane.

6 Description of device



Fig. 4: Description of device WK 2003 (top), WK 1002 LP (middle), WK 2002 LP (bottom)

- 1 Crane arm support beam
- 2 Crane arm boom
- 3 Load hook
- 4 Hydraulic cylinder
- 5 Auxiliary beam
- 6 Pump lever
- 7 Chassis carrier with wheels
- 8 Implement base
- 9 Transport handle
- 10 Adjustment screws
- 11 Main beam
- 12 Crane arm

Illustrations in these operating instructions may differ from the original.

7 Assembly



Wear protective gloves !



Wear safety boots!



Wear protective clothes!



CAUTION!

Risk of crushing!

Improper work on the workshop crane may result in injury to upper limbs.

First put the workshop crane together and screw it loosely. Then tighten all the screws completely!

7.1 WK 2003

Step 1: Mount the wheels on the base of the unit.

Step 2: Screw the main beam to the unit base.

Step 3: Bolt the auxiliary beams to the implement base and to the main beam.

Step 4: Fit the undercarriage supports to the implement base.

Step 5: Bolt the hydraulic cylinder to the main beam.

Step 6: Fit the crane arm to the main beam.

Step 7: Bolt the hydraulic cylinder to the crane arm.

Step 8: Screw the hook support with load hook to the crane arm boom and attach the boom to the crane arm. Mount the pump lever.

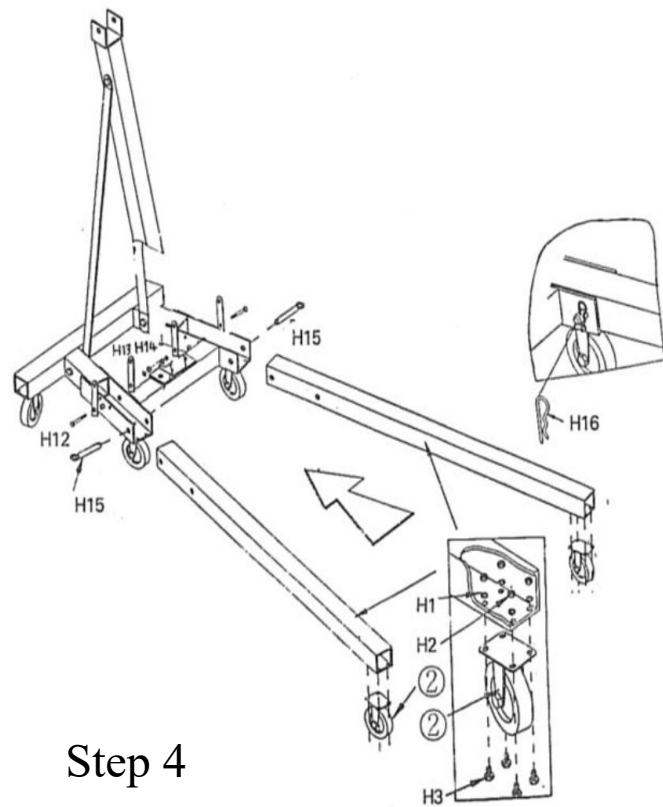
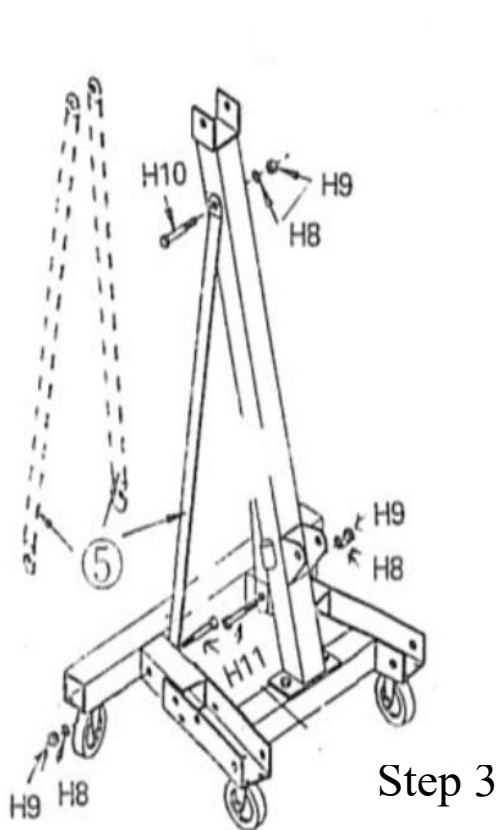
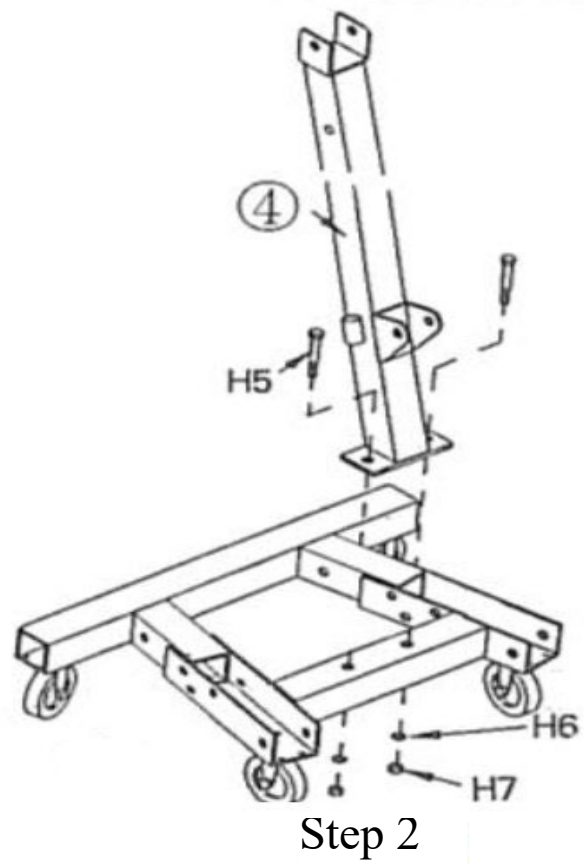
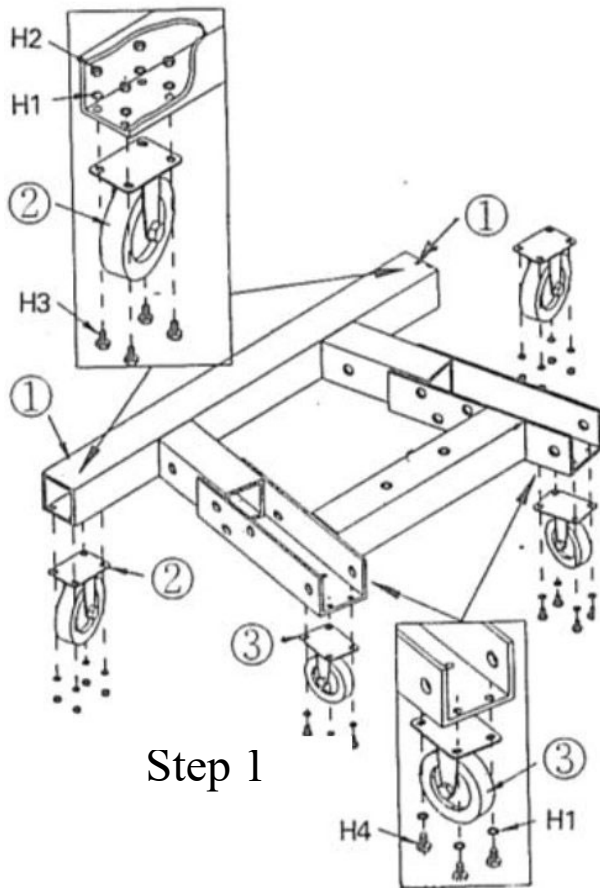
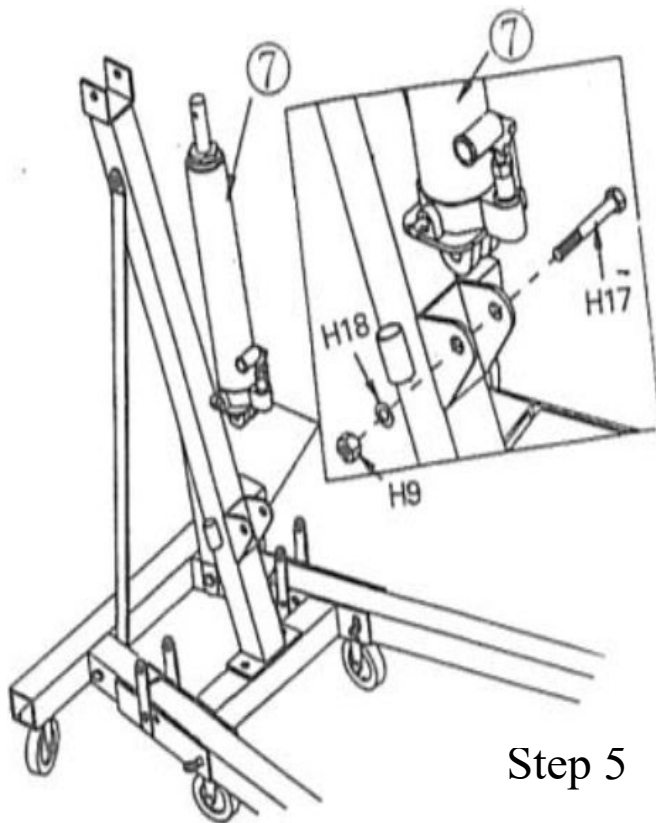
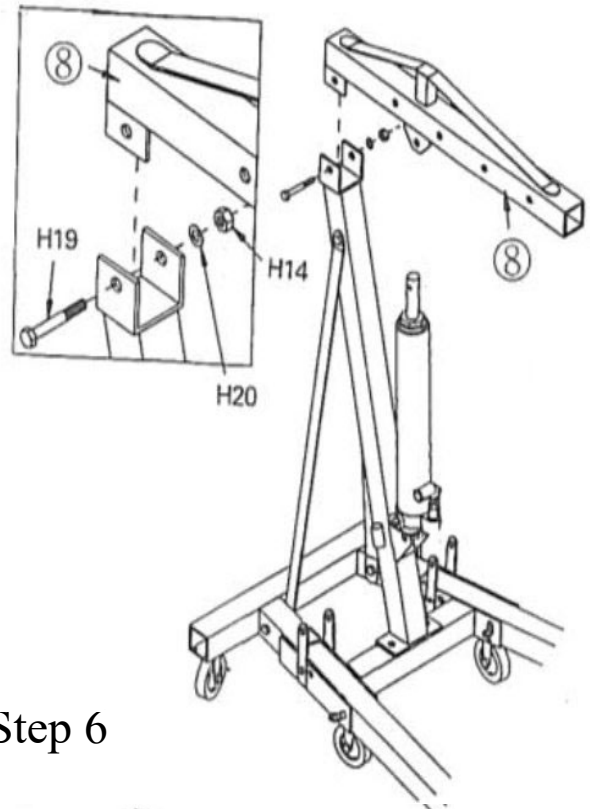


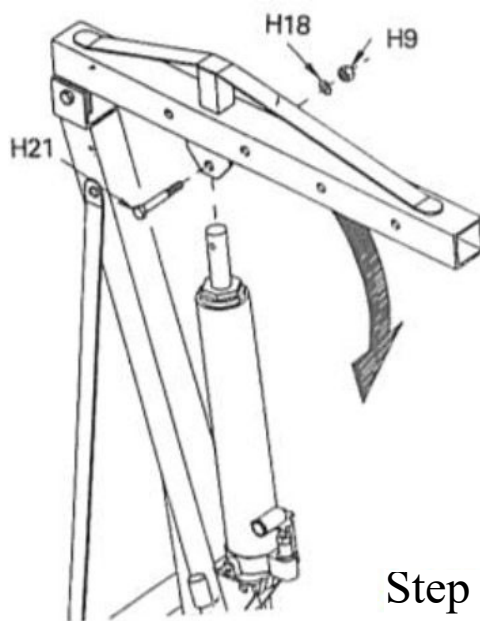
Fig. 5: Assembly WK 2003



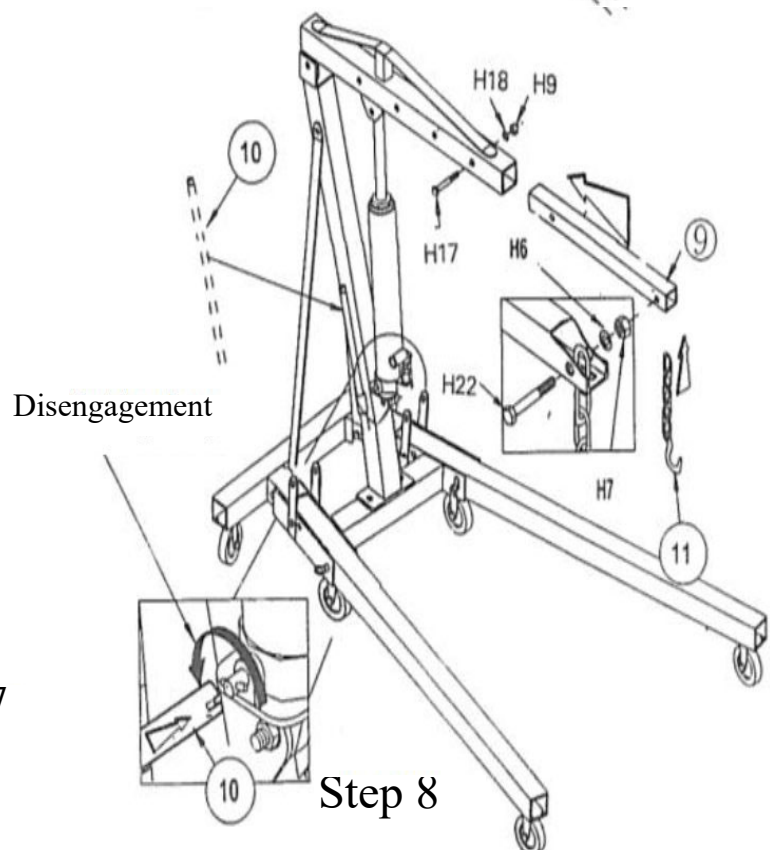
Step 5



Step 6



Step 7



Step 8

Fig. 6: Assembly WK 2003

7.2 WK 1002 LP

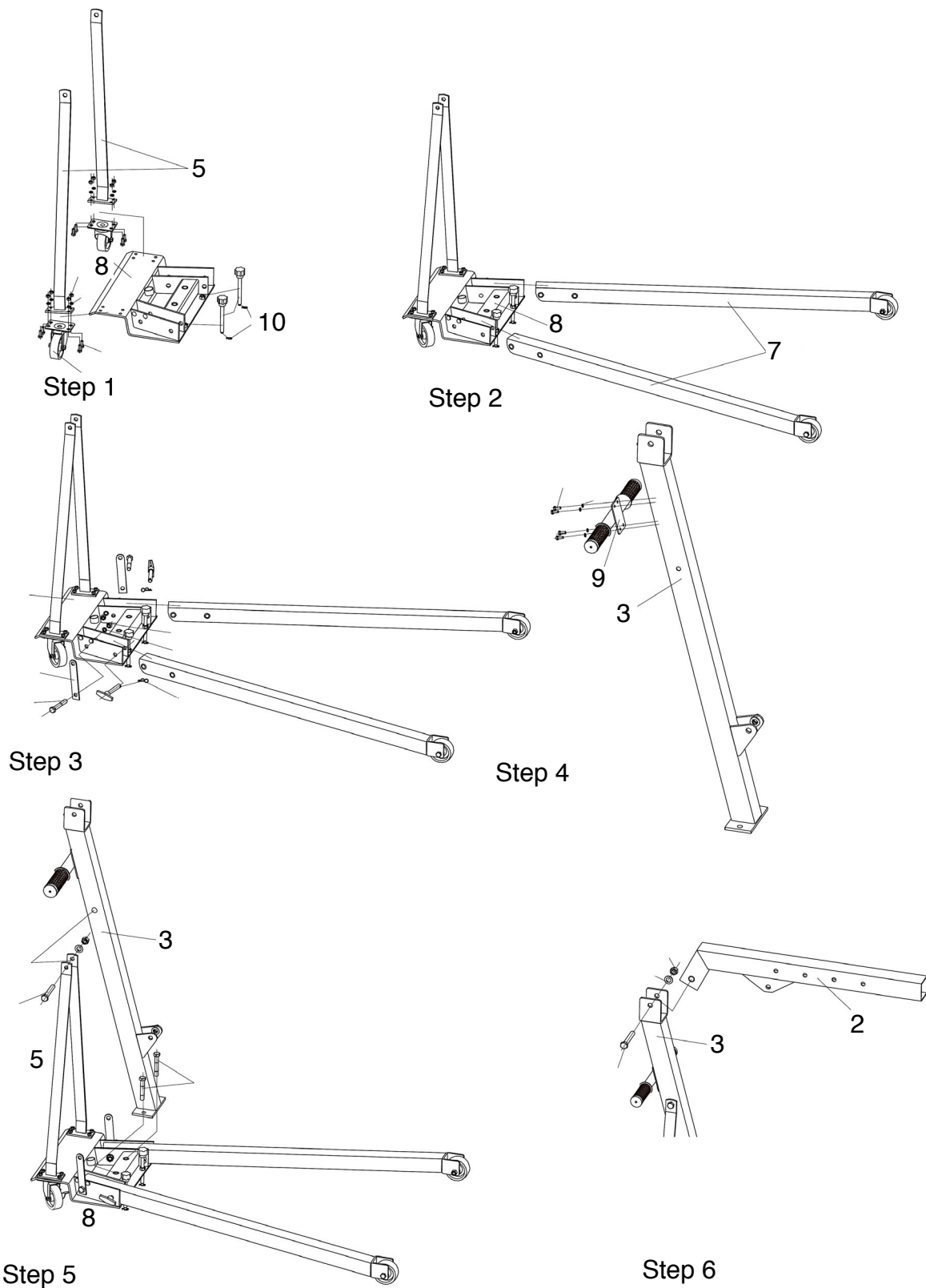
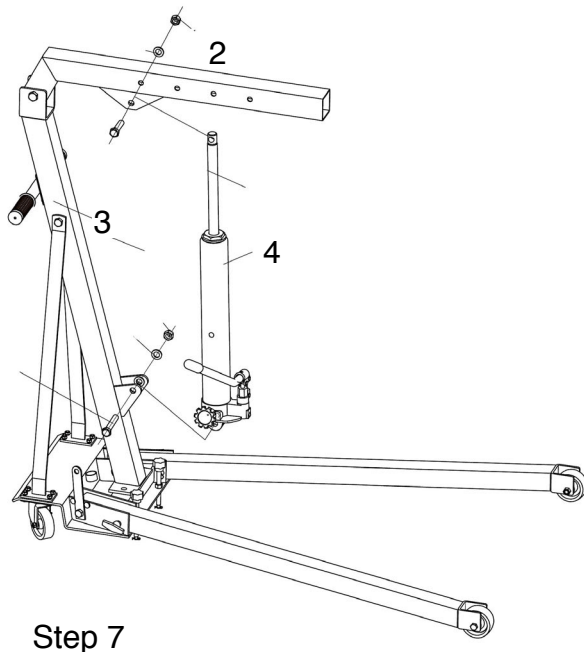
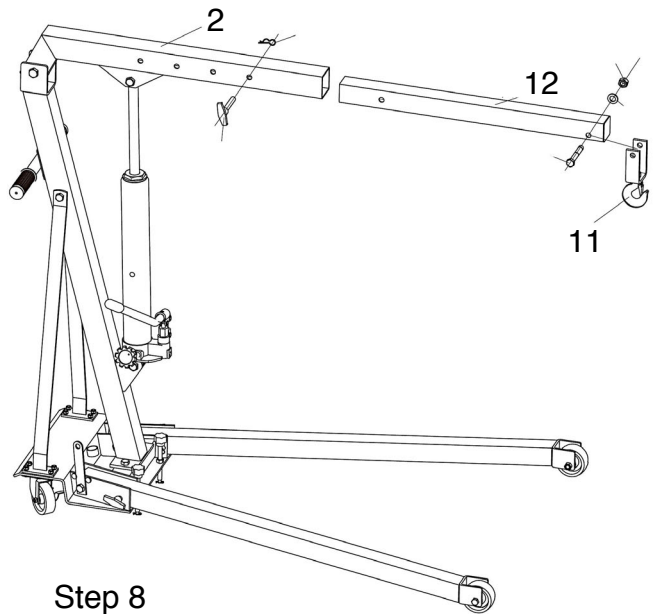


Fig. 7: Assembly WK 1002 LP Steps 1-6



Step 7

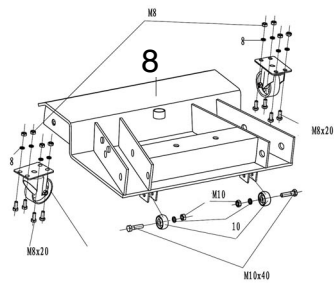


Step 8

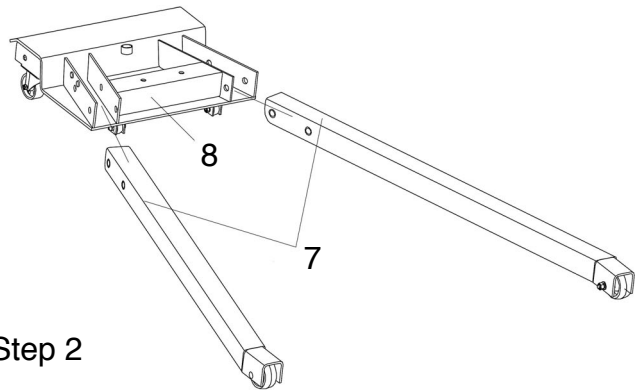
Fig. 8: Assembly WK 1002 LP Steps 7 and 8

- Step 1: Fit the wheels, the auxiliary beams (5) and the adjustment screws (10) to the base (8).
- Step 2: Fix the trolley supports (7) to the base (8).
- Step 3: Screw the transport handle (9) to the main carrier (3).
- Step 4: Screw the main beam to the implement base (8) and mount the auxiliary beams (5) to the main beam.
- Step 5: Screw the crane arm (2) to the main beam (3).
- Step 6: Screw the hydraulic cylinder (4) to the main beam (3). Then screw the hydraulic cylinder to the crane arm (2).
- Step 7: Screw the load hook (11) to the crane arm (12). Mount the crane arm extension (12) on the crane arm (2) and secure it with the cotter pin. Tighten all bolts and nuts to ensure stability of the crane for reliable work.

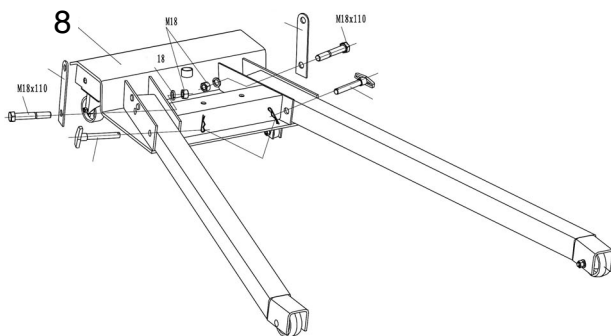
7.3 WK 2002 LP



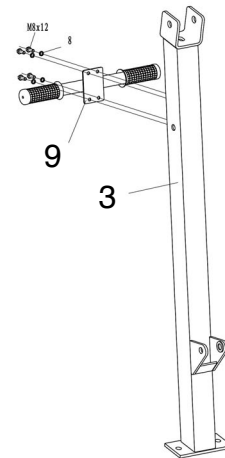
Step 1



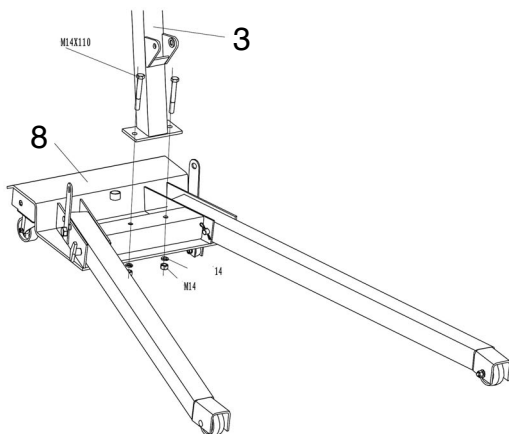
Step 2



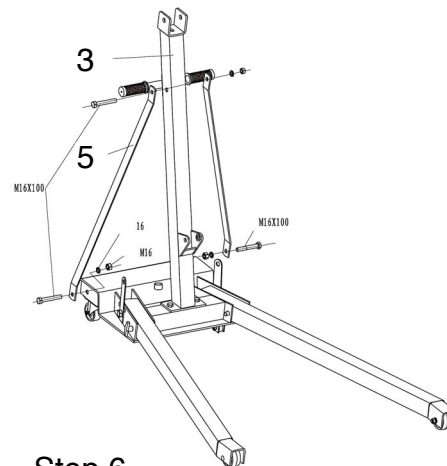
Step 3



Step 4

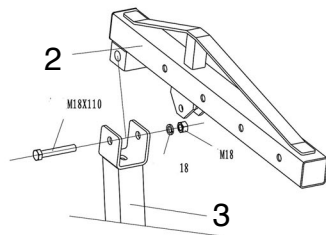


Step 5

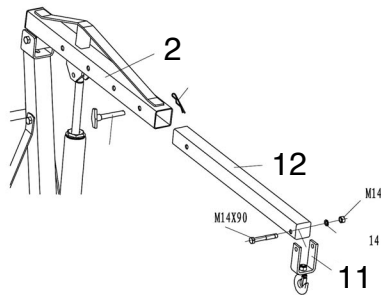


Step 6

Fig. 9: Assembly WK 2002 LP Steps 1-6



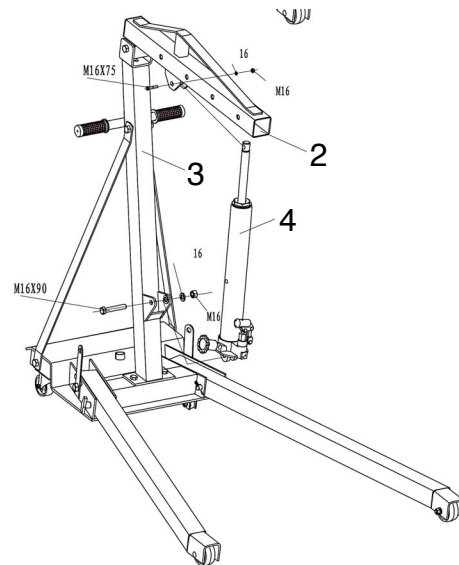
Step 7



Step 9

Fig. 10: Assembly WK 2002 LP Steps 7-9

- Step 1: Mount the wheels on the unit base (8).
- Step 2: Mount the chassis supports (7) to the base (8) with the bolts M18x110.
- Step 3: Fix the adjusting screws (10) to the base (8).
- Step 4: Mount the main beam (3) to the unit base (8).
- Step 5: Mount the support beams (5) to the chassis with the bolts 23, 26, 27.
- Step 6: Mount the crane arm (2) to the main beam (3) with bolts 36, spacer washer (29) and nut M16 (30).
- Step 7: Bolt the hydraulic cylinder (4) to the main beam (3) with bolts M16x90 (25), spacer (29) and nut M16 (30). Finally mount the hydraulic cylinder to the crane arm (2) with bolts M16x75 (25), spacer (29) and nut M16 (30).
- Step 8: Attach the load hook (12) to the crane arm boom (12) with the bolts M14x90 (), spacer (28) and nut M14 (27).
- Step 9: Mount the crane arm boom (12) on the crane arm (2) and secure it with the cotter pin.
- Step 10: Mount the transport handle (9) with bolt (22) and spacer (20) to the main beam (3).
- Step 11: Tighten all bolts and nuts to ensure stability of the crane for safe working.



Step 8

8 Before commissioning

All work for commissioning the workshop crane may only be carried out by authorised specialists.

Before commissioning, all functions of the workshop crane must be checked.

Oil the chain before first use.

9 Operation



DANGER!

Danger to life due to falling of the load!

Falling loads can cause serious injury or death.

- Avoid overload. Check that the load never exceeds the maximum load indicated on the nameplate.
- Never step under suspended loads, stay there or work under suspended loads.
- Unsuitable lifting points can fail and the load can crash. Only attach the load hook to the Workshop Crane at suitable attachment points on the load.
- A lifted load must never be subjected to impact or shock loading.
- Ensure that the surface on which the workshop crane stands is sufficiently strong to hold the load.
- Never lift a load that can slip or whose parts are not firmly connected to one another with the workshop crane.
- Never use a rusted or damaged workshop crane.
- Never leave a load lifted by the workshop crane unattended.
- While lifting or lowering a load, make sure that the operator is out of reach of the load at all times if it slips or falls.
- When leaving the workplace, lower the load.



ATTENTION

- Do not carry people on the Workshop crane.
- Do not move loads which exceed the maximum load-bearing capacity of the Workshop crane (see type plate).
- Never use the Workshop crane with damaged or kinked cable.
- The Workshop crane must not be used for moving jammed or wedged loads.
- Avoid over-use of jog control (repeated short impulses to the motor).
- Do not change the direction of movement suddenly.
- In order to prevent accidents and to minimise strain on the Workshop crane, never leave a heavy load suspended for a lengthy period of time.



CAUTION!

Risk of crushing!

Injuries to hands and fingers may result from improper use of the Workshop crane.



Wear head protection!



Use protective gloves!



Wear safety boots!



Wear protective clothing!



NOTE!

- The operating persons must be familiar with the operation and functions as well as the safety regulations when operating the workshop crane.
- The operator must provide the necessary instruction for the operating personnel.

9.1 Operating conditions

The work area must be dry, fire and explosion proof and free of corrosive and toxic substances.

Dangerous goods such as liquid, toxic or radioactive materials may not be lifted with the workshop crane..

9.2 Test run

Perform a test with all functions tested without load before operation.

9.3 Lift the load

Step 1: Try to estimate the weight of the load as accurately as possible and adjust the position of the extension arm. The maximum lifting capacity of the unit is set via the attachment position of the extension arm.

Step 2: Move the unit over the load so that the load hook is directly above the load when the extension arm is lowered.

Step 3: Now securely attach the load to the load hook.

Step 4: Close the valve of the lifting cylinder by turning the pump lever clockwise as far as it will go (Attention! Do not overtighten!) and lift the load to the desired height by operating the pump lever.



NOTE!

The load capacity of the crane always depends on the set arm length. The listed locking positions provide information about the load-bearing capacity as a function of the crane's arm length.

9.4 Move the load



ATTENTION!

- Make sure that the path of the workshop crane is free of obstacles.
- Avoid the load from swivelling.

Step 1: Lift the load only so far that it can be moved freely over the distance to be travelled.

Step 2: Move the workshop crane slowly, smoothly and evenly. Avoid at all costs that the load starts to swing!

9.5 Lower the Load

- To lower the load again, open the valve with the pump lever by turning it slowly counterclockwise.
- The opening speed of the valve controls the lowering speed.



CAUTION!

Risk of crushing!

Lowering the load may cause crushing of the upper and lower limbs.

- Do not hold the upper and lower limbs between the load and the ground when lowering the load.

10 Care, maintenance and repair

10.1 Pflege durch Reinigung

Der Werkstattkran ist stets in einem sauberen Zustand zu halten.



Wear suitable protective gloves!



NOTE!

Never use strong cleaning agents to clean the device. Such cleaning agents might damage or destroy the device.

All plastic and lacquered surfaces should be cleaned using a soft, damp cloth and a neutral cleaning agent.

Remove any excess lubricant or leaked oil using a dry, lint-free cloth.

10.2 Maintenance and repair



ATTENTION!

Maintenance and repair works must only be performed by specialists.

If the workshop crane does not function properly, contact a specialist dealer or our customer service. The contact details can be found in chapter 1.2 Customer service.

All protective and safety devices must be refitted immediately after repair and maintenance work has been completed.

The hydraulic unit (pump) is a sealed system. Under normal working conditions, the moving parts must be oiled once a month. If the pump has been dismantled to change worn seals or because an oil leak has occurred, fill oil (with the piston retracted) into the pump through the opening of the oil plug. The required oil quantity is 2.3 litres. All types of oil with a viscosity of 10°-30° CTS/ 40°C can be used for the WK 2002.

Venting

Before using for the first time, with the lifting arm lowered, push the lever down while simultaneously pumping with the handle several times. Then release the lever. The hydraulic system should now be vented.

Inspect the oil level

Step 1: Open the oil filler plug and check the oil level.
The oil should reach down to the lower edge of the oil filler neck when the lifting cylinder is completely lowered.

Step 2: If necessary, add hydraulic oil. Only use new, clean hydraulic oil, viscosity class "ISO VG 32".

Step 3: Screw in the oil filler plug. Check the function of the workshop crane.

Step 4: Bleed the hydraulic system.

Maintenance plan

If an increase in wear is noted during regular inspections, the maintenance intervals should be decreased in accordance with the actual signs of wear. Contact the manufacturer for further information concerning maintenance tasks and intervals. Please find the contact data on chapter 1.2 Customer service..

Step 1: Lubricate all moving parts of the Workshop crane (gears, bearings) with good quality grease.

Step 2: Check the Workshop crane before each operation for visible signs of wear.

Step 3: Always ensure that all safety information on the Workshop crane is clearly legible.

Step 4: Check the oil level in the hydraulic cylinder regularly. Bleed the hydraulics as needed.

Wear measurement and renewal of the load hook

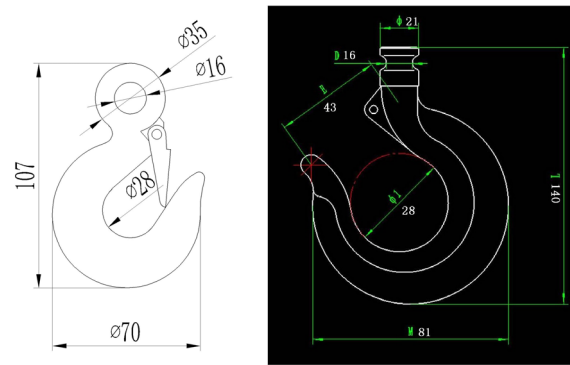


Fig. 11: Dimensions of load hook WK 2000 (left) and WK 1000 LP, WK 2001 LP (right)

According to DIN 15405 Part 1, the load hooks must be replaced if the expansion is greater than 10%.



ATTENTION!

Only use original parts from the hoist manufacturer as replacements.

11 Testing the Workshop Crane

The workshop crane must be checked for operational safety by a qualified person in accordance with the provisions of the German Industrial Safety Ordinance BGR 500 before first use and, if required, at intervals of no more than 1 year.

A person may be considered qualified if he / she has at least the qualifications previously given to the expert. The scope of testing and the inspection deadlines are i.a. according to the results of the risk assessment to be carried out. Type, extent and deadlines of the tests described in the BGR 500 are previous practice and comply with the rules of technology.

The test is essentially a visual and functional test. It covers the examination of the condition of the components and equipment, the completeness and effectiveness of the safety equipment and the completeness of the test book. If a test period of no more than one year is adhered to, the operator can assume that this period is sufficient.

Verification of workshop cranes shall be verified by a log book.

12 Inspection and maintenance plan

Time interval	Description
Before starting work	<ul style="list-style-type: none"> - Check the workshop crane for damage and wear. WK 2000: Inspect the chain links for bending, stretching, cracks and corrosion - Check the hook for wear or loss of substance by grinding. If the wear exceeds 10% of normal on delivery, the hook must be replaced. - Ensure perfect function of all moving parts
after each use	<ul style="list-style-type: none"> - Thoroughly clean the Workshop Crane and lubricate well. Oil the load chain and the load hook well
monthly	<ul style="list-style-type: none"> - Oil all joints - Lubricate wheel bearings well (multi-purpose or graphite grease)
all 3 Months	<ul style="list-style-type: none"> - Wear test and wear measurement of the chain links and the load hook - Check the unit for signs of rust or corrosion. If necessary, remove it with a clean, oil-soaked cloth. - Check hydraulic oil level in hydraulic cylinder. If necessary, add hydraulic oil.
As required	<ul style="list-style-type: none"> - Replacement of the chain links and the load hook
yearly	<ul style="list-style-type: none"> - Change the Hydraulic Oil
yearly	<ul style="list-style-type: none"> - Safety check: If the Workshop Crane is used in companies, it must be tested annually according to the German Industrial Safety Ordinance and the test must be documented in accordance with § 10.

13 Disposal, recycling of used devices

Please take care in your own interest and in the interest of the environment that all component parts of the machine are only disposed of in the intended and permitted way.

13.1 Decommissioning

Immediately decommission disused machines in order to avoid later misuse and endangering of the environment or personal safety.

Step 1: Eliminate all environmentally hazardous operating materials from the used device.

Step 2: If required, disassemble the machine into easy-to-handle and usable components and parts.

Step 3: Dispose of machine components and operating materials by the disposal channels provided.

13.2 Disposal of lubricants

Remove any leaking, used or excessive grease at the lubricating points.

Disposal notes for used lubricants are available from the manufacturer of the lubricants. If necessary, request the product-specific data sheets.

14 Spare parts



DANGER!

Danger of injury by the use of wrong spare parts!

Dangers may result for the user and damages as well as malfunctions may be caused by using wrong or damaged spare parts.

- Only use original spare parts of the manufacturer or spare parts admitted by the manufacturer.
- Always contact the manufacturer in case of uncertainties.



Tips and recommendations

The manufacturer's warranty will become null and void if non-permissible spare parts are used

14.1 Ordering spare parts

The spare parts may be purchased with the authorised dealer or directly with the manufacturer. Please find the corresponding contact data in Chapter 1.2 Customer service.

Indicate the following basic information for requests or orders of spare parts:

- Type of device
- Item No.
- Position No.
- Year of construction:
- Quantity
- Required mode of dispatch (mail, freight, sea, air, express)
- Address of dispatch

Spare part orders which do not include the above indications may not be taken into consideration. If the indications regarding the mode of dispatch are missing, the product is dispatched at the discretion of the supplier.

You will find information regarding the device type, item No. and year of manufacture on the type plate fixed to the Workshop crane.

Example

The load chain for the workshop crane WK 2003 bestellt werden. must be ordered. The load chain has the number 37 in the spare parts drawing.

By ordering spare parts, send a copy of the spare parts drawing with the marked part (load chain) and marked position number (37) to the dealer or spare parts department and provide the following information:

- Type of device: **WK 2003**
- Item number: **6201420**
- Position number: **37**

The item number of your device:

Workshop crane WK 1002 LP = 6201421

Workshop crane WK 2003 = 6201423

Workshop crane WK 2002 LP = 6201422

14.2 Spare parts drawings

In case of service, the following drawings shall help to identify the necessary spare parts. If necessary, send a copy of the parts drawing with the marked components to your authorised dealer.

Spare parts drawing WK 2003

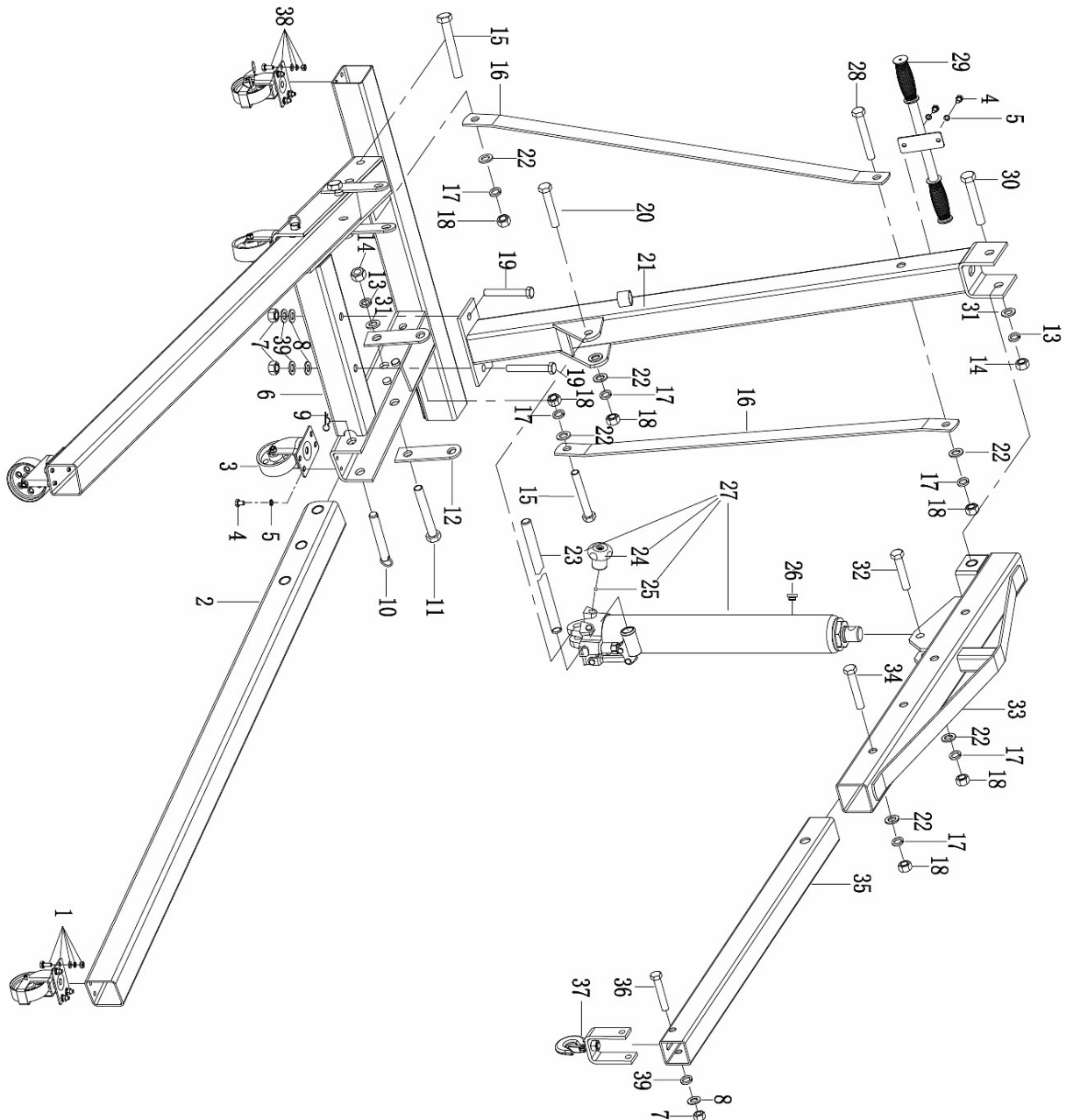


Fig. 12: Spare parts drawing WK 2003

Spare parts drawing WK 1002 LP

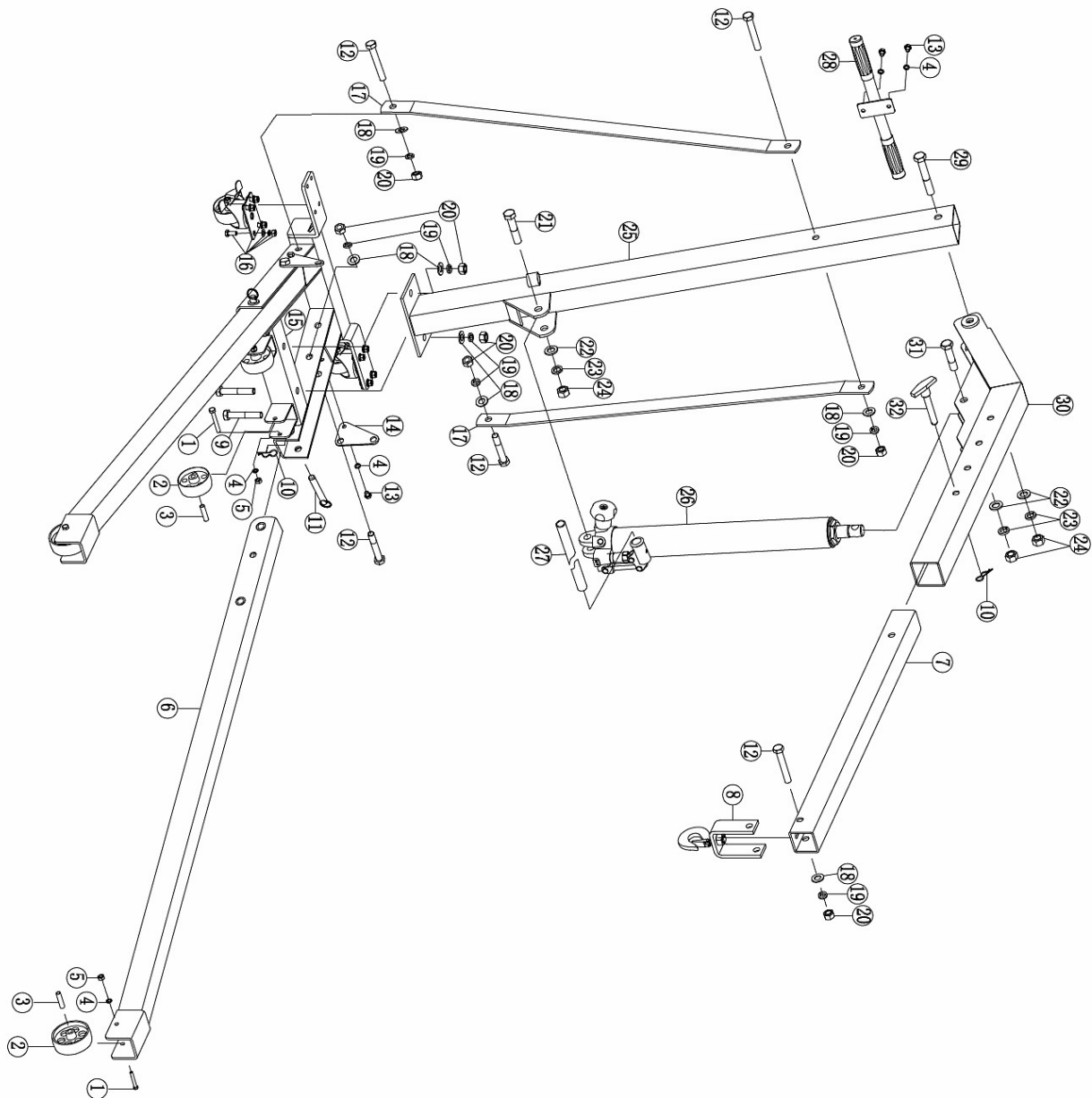


Fig. 13: Spare parts drawing WK 1002 LP

Spare parts drawing WK 2002 LP

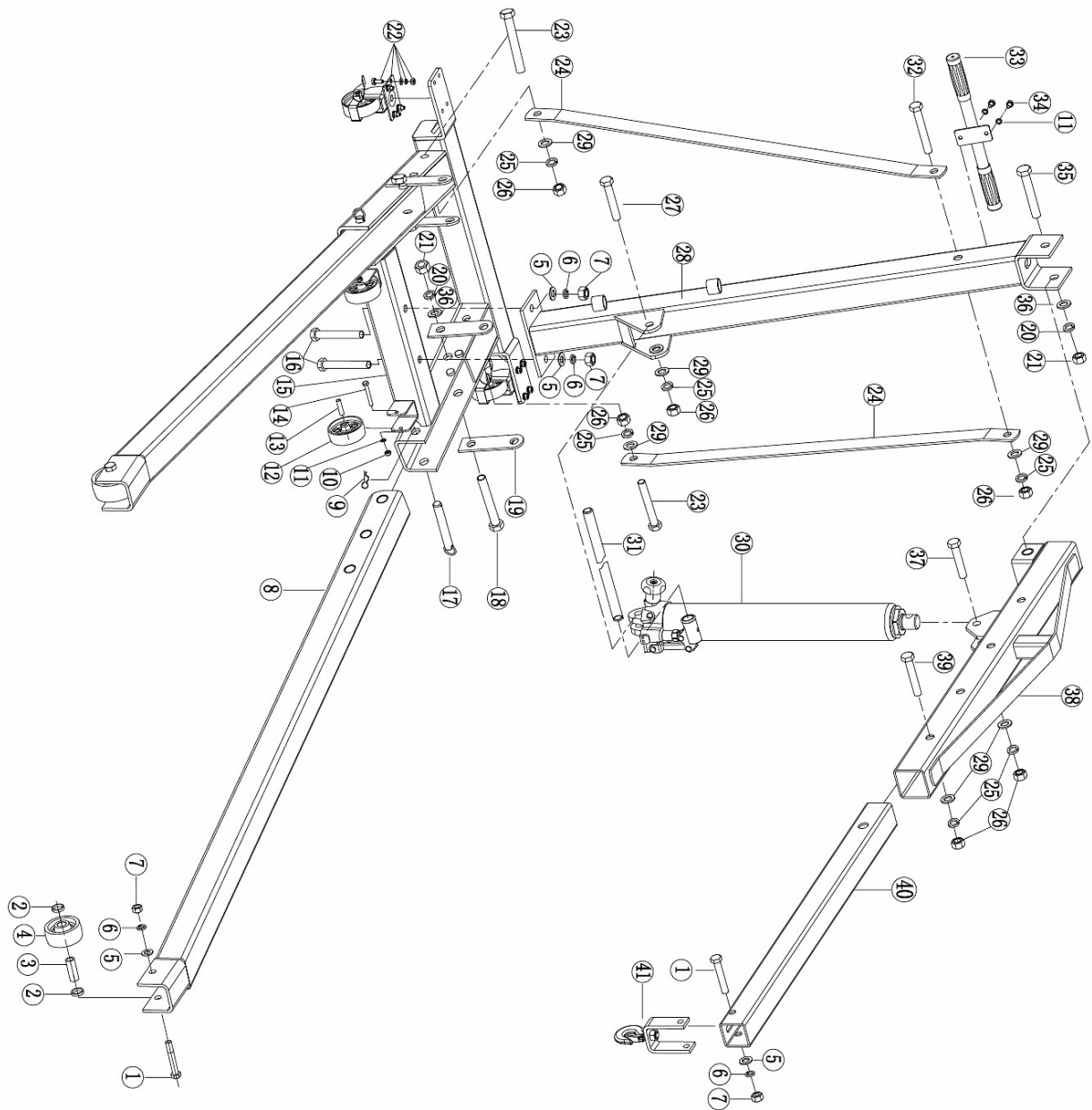


Fig. 14: Spare parts drawing WK 2002 LP

15 EC-Declaration of Conformity

According to machine directive 2006/42/EC Annex II 1.A

Manufacturer/distributing company: Stürmer Maschinen GmbH
Dr.-Robert-Pfleger-Str. 26
D-96103 Hallstadt

herewith declares that the following product

Product group: Unicraft® Werkstatttechnik

Designation of the machine: ☐ WK 2003
☐ WK 1002 LP
☐ WK 2002 LP

Item number: ☐ 6201420
☐ 6201421
☐ 6201422

Serial number: _____

Year of manufacture: 20____

* fill these fields according to the information on the type plate

complies with all relevant provisions of the above mentioned directive as well as the other applied directives (below) - including their applicable modifications at the time of the declaration.

The following harmonized standards were applied:

DIN EN 13157:2010-07	Cranes - Safety - Hand powered
DIN EN 1494:2000/A1:2009-05	Mobile or movable jacks and associated lifting equipment
DIN EN ISO 3691-5:2014	Industrial trucks - Safety requirements and verification - Part 5: Pedestrian-propelled trucks

Responsible for the documentation: Kilian Stürmer, Stürmer Maschinen GmbH,
Dr.-Robert-Pfleger-Str. 26, D-96103 Hallstadt

Hallstadt, 10.07.2020



Kilian Stürmer
Manager



[illegible]

