

Operating Instructions

— Mobile Fan

— MV 30, MV 50, MV 60, MV 80



MV 30



MV 80

MV SERIES

Imprint

Product identification

Mobile Fan	Item number
MV 30	6260030
MV 50	6260050
MV 60	6260060
MV 80	6260080

Manufacturer

Stürmer Maschinen GmbH
Dr.-Robert-Pfleger-Str. 26
D-96103 Hallstadt

Fax: 0049 (0) 951 96555 - 55
Email: info@unicraft.de
URL: www.unicraft.de

Indications regarding the operating instructions

Genuine operating instructions
according to DIN EN ISO 20607:2019

Edition: 23.08.2022
Version: 2.01
Language: English

Author: KP/ES

Indications regarding the copyright

Copyright © 2022 Stürmer Maschinen GmbH, Hallstadt,
Germany.

Subject to technical modifications and error.

Content

1 Introduction	3
1.1 Copyright	3
1.2 Customer service	3
1.3 Limitation of liability	3
2 Safety	3
2.1 Symbol explanation	3
2.2 General safety instructions	4
2.3 Safety data sheets	4
2.4 Personal protective equipment	5
2.5 Safety labels on the mobile fan	5
3 Intended use	5
3.1 Reasonably foreseeable Misapplication	5
3.2 Residual risks	5
4 Technical Data	6
4.1 Table	6
4.2 Type plate	6
4.3 Dimensions	6
4.4 Scope of delivery	6
4.5 Accessories	6
5 Transport, packaging, storage	7
5.1 Transport	7
5.2 Packaging	7
5.3 Storage	7
6 Operation	7
7 Care, maintenance and repair	8
7.1 Care by cleaning	8
7.2 Maintenance and repair	8
8 Disposal, recycling of used equipment	8
8.1 Decommission	8
8.2 Disposal of electrical equipment	8
9 Spare parts	9
9.1 Spare parts order	9
9.2 Spare parts drawing	10
10 Electrical circuit diagrams	11
11 EC Declaration of Conformity	12
12 Notes	13

1 Introduction

You have made a good choice by purchasing the UNICRAFT fan.

Read the operating instructions carefully before commissioning.

This is an important part and must be kept near the machine and accessible to every user.

The operating instructions inform you about the proper commissioning, the intended use as well as the safe and efficient operation and maintenance of the fan.

In addition, observe the local accident prevention regulations and general safety regulations for the area of application of the fan.

1.1 Copyright Information

The contents of these instructions are protected by copyright and are the sole property of Stürmer Maschinen GmbH. Their use is permitted within the scope of the use of the fan. Any other use is not permitted without the written consent of the manufacturer.

Passing on as well as duplication of this document, utilization and communication of its contents are forbidden, as far as not expressly permitted. Violations will result in liability for damages. We register trademark, patent and design rights for the protection of our products, if this is possible in individual cases. We emphatically oppose any infringement of our intellectual property rights.

1.2 Customer service

Please contact your dealer if you have any questions about your mobile fan or technical information. There you will be happy to help with expert advice and information.

Germany:

Stürmer Maschinen GmbH
Dr.-Robert-Pfleger-Str. 26
D-96103 Hallstadt

Repair - Service:

Fax: 0951 96555-111
Email: service@stuermer-maschinen.de
Internet: www.unicraft.de

Ordering spare parts:

Fax: 0951 96555-119
Email: ersatzteile@stuermer-maschinen.de

We are always interested in information and experiences that arise from the application and can be valuable for the improvement of our products.

1.3 Limitation of liability

All information and instructions in this manual have been compiled taking into account the applicable standards and regulations, the state of the art as well as our many years of knowledge and experience.

In the following cases, the manufacturer assumes no liability for damages:

- Non-observance of the operating instructions,
- Inappropriate use
- Use of untrained staff,
- Unauthorised modifications
- Technical changes,
- Use of not allowed spare parts.

The actual scope of delivery may deviate from the explanations and presentations described here in case of special models, when using additional ordering options or due to latest technical modifications.

The obligations agreed in the delivery contract, the general terms and conditions as well as the delivery conditions of the manufacturer and the legal regulations at the time of the conclusion of the contract are applicable.

2 Safety

This section provides an overview of all important safety packages for the protection of the operating personnel as well as for safe and fault-free operation. Other task based safety notes are included in the paragraphs of the individual phases of life.

2.1 Symbol explanation

Safety instructions

The safety notes in these operating instructions are highlighted by symbols. The safety notes are introduced by signal words which express the concern of the risk.



DANGER!

This combination of symbol and signal words indicates an imminently dangerous situation which may lead to death or severe injuries if they are not avoided.

WARNING!

This combination of symbols and signal words indicates a possibly dangerous situation which may lead to death or severe injuries if they are not avoided.

CAUTION!

This combination of symbol and signal words indicates a possibly dangerous situation which may lead to minor or light injuries if they are not avoided.

ATTENTION!

This combination of symbol and signal words indicates a possibly dangerous situation which may lead to property and environmental damages if they are not avoided.



NOTE!

This combination of symbol and signal words indicates a possibly dangerous situation which may lead to property and environmental damages if they are not avoided.

Tips and recommendation



Tips and recommendation

This symbol highlights useful tips and recommendation as well as information for all efficient and trouble-free operation.

It is necessary to observe the safety notes written in these operating instructions in order to reduce the risk of personal injuries and damages to property.

2.2 General safety instructions

The following should be noted:

- Use the protective devices and fasten them securely. Never work without guards and keep them in working order.
- Always keep the fan and its working environment clean. Ensure that there is sufficient lighting.
- Switch off the ventilator and disconnect the mains plug before replacing operating equipment and wearing parts.

- The fan must not be modified in its design and must not be used for purposes other than those intended by the manufacturer.
- Never work under the influence of diseases that impair concentration, overtiredness, drugs, alcohol or medication.
- Do not pull on the power cord to unplug it from the wall outlet. Protect the cord from heat, oil and sharp edges.
- Never use the power cord to move or lift the fan.
- Immediately eliminate any malfunctions that affect safety.
- The fan must not be connected via an external switching device, e.g. a timer.
- Ensure a minimum fan distance of 1 meter.
- Before each use, make sure that no parts are damaged on the fan.
- Damaged parts must be replaced immediately to avoid sources of danger.
- Do not stack the fans on top of each other.
- Do not insert any objects into the openings. Do not use the unit with the openings blocked; keep it free of dust, lint, hair, and anything that can reduce airflow. Keep your hair, clothing, fingers and all body parts away from openings and moving parts.
- Do not use immersed in water or standing in water. There is a risk of electric shock. To avoid electric shock, do not expose the unit to rain.
- Store it indoors only. Do not expose the
- Do not expose the unit to freezing temperatures.
- Do not use flammable cleaning agents to clean this device.
- Never cover the fan with a blanket or similar.
- Do not overload the fan! You will work better and safer in the specified power range.
- Always use the fan with the protective cover installed to avoid contact with the propeller.
- Do not pour highly flammable solvents or petroleum-based chemicals through the inlet grille.
- The fan is not intended for operation in wet or damp areas.
- Operate the fan on a straight and stable surface to prevent it from falling and to avoid injury or damage.
- Use only original spare parts and accessories to avoid possible dangers and risks of accidents..

2.3 Safety data sheets

Safety data sheets on hazardous materials can be obtained from your specialist dealer or by calling +49 (0)951/96555-0. Specialist dealers can find safety data sheets in the download area of the partner portal.

2.4 Personal protective equipment

The personal protective equipment serves to protect persons against impairments of safety and health while working. The staff member has to wear personal protective equipment while performing different tasks on and with the machine which are indicated in the individual paragraphs of these instructions.

The personal protective equipment is explained in the following paragraph:



Head protection

The industrial helmet protects the head against falling objects and bumping against fixed objects.



Protective gloves

The protective gloves are used to protect the hands from sharp-edged components, as well as from friction, abrasions or deeper injuries.



Safety boots

The safety shoes protect the feet against bruising, falling parts and slipping on slippery surfaces.



Protective clothing

Protective clothing is tight-fitting work clothing, with no protruding parts, with low tear resistance.

2.5 Safety labels on the mobile fan

The following safety labels are attached to the mobile fan (Fig. 1), which must be observed and followed:

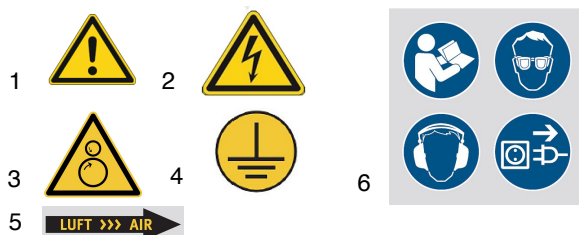


Fig. 1: Safety labels: 1 Warning of dangers | 2 Warning of dangerous electrical voltage | 3 Warning of rotating machine parts | 4 Grounding symbol | 5 Flow direction | 6 Safety instructions

The safety labels attached to the machine must not be removed. Damaged or missing safety labels can lead to incorrect actions, personal injury and damage to property. They must be replaced immediately.

If the safety symbols are not recognisable and comprehensible at first glance, the fan must be taken out of operation until new safety symbols have been applied.

3 Intended use

The fan is used exclusively for extracting and distributing air and for cooling and drying objects. It is not explosion-proof and is not intended for outdoor operation.

Intended use also includes compliance with all the information in these instructions.

3.1 Reasonably foreseeable Misapplication

Any use beyond the intended use or any other use is considered misuse.

Possible misapplications may include:

- Service work by untrained or unauthorized personnel.
- Operating the fan without functioning, intended protective devices.
- Operation of the fan in industrial areas.

Misuse of the fan can lead to dangerous situations.

In case of constructive and technical modifications to the fan, the company Stürmer Maschinen GmbH does not assume any liability.

Claims of any kind for damages due to improper use are excluded.

3.2 Residual risks

Even if all safety regulations are observed and the machine is used in accordance with the regulations, there are still residual risks, which are listed below:

- Fire hazard.
- Electrical hazard due to contact with parts and high voltage (direct contact) or with parts under a high voltage due to a defect of the device (indirect contact).
- Upper limb hazard due to accidental contact with the impeller.

4 Technical Data

4.1 Table

	MV 30	MV 50
Impeller-Ø [D]	300 mm	500 mm
Basket-Ø [D1]	380 mm	580 mm
Supply voltage	230V/50 Hz	230V/50 Hz
Speed	2800 min ⁻¹	1400 min ⁻¹
Drive motor output	500 W	1100 W
Max. air flow	3900 m ³ /h	9000 m ³ /h
Dimensions [LxWxH]	420x380x380 mm	670x670x485 mm
Weight approx.	15 kg	39 kg
Noise level	69 dB(A)	73 dB(A)

	MV 60	MV 80
Impeller-Ø [D]	600 mm	800 mm
Basket-Ø [D1]	685 mm	880 mm
Supply voltage	230V/ 50 Hz	230V/ 50 Hz
Speed	1400 min ⁻¹	960 min ⁻¹
Drive motor output	2000 W	2200 W
Max. air flow	14400 m ³ /h	25200 m ³ /h
Dimensions [LxWxH]	770x770x575 mm	975x880x970 mm
Weight approx.	64 kg	84 kg
Noise level	79 dB(A)	74 dB(A)

4.2 Type plate

Mobiler Ventilator Mobile fan		CE	
Typ Type	MV 30	Serien-Nr. Serial no.	
Artikel-Nr. Item no.	626 0030	Baujahr Year of manufacture	
Motorleistung Motor power	500 ~ 550 W	Netzanschluss Power connection	230 V
		Stürmer Maschinen GmbH Dr.-Robert-Pfleger-Str. 26, 96103 Hallstadt Deutschland / Germany	

Fig. 2: Type plate

4.3 Dimensions

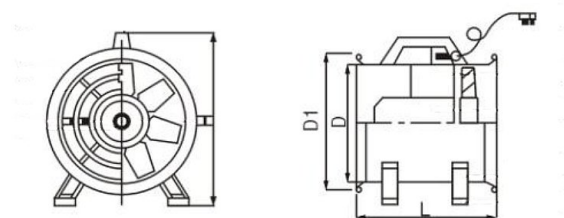


Fig. 3: Dimensions

Dimensi- ons	MV 30	MV 50	MV 60	MV 80
L [mm]	420	670	770	975
D1 [mm]	380	580	680	880
D [mm]	300	500	600	800
H [mm]	380	485	575	970

4.4 Scope of delivery

MV 30

- Carry handle
- 4 Rubber feet

MV 50, MV 60 and MV 80

- 2 Swivel castors
- 2 Fixed casters

4.5 Accessories



Fig. 4: Accessories

- Air hose Ø 300 mm; Length: 10m (MV 30)
Item number: 6260130
- Air hose Ø 500 mm; Length: 10m (MV 50)
Item number: 6260150
- Air hose Ø 600 mm; Length: 10m (MV 60)
Item number: 6260160
- Air hose Ø 800 mm; Length: 10m (MV 80)
Item number: 6260180

5 Transport, packaging, storage

5.1 Transport

Check the mobile fan after delivery for visible transport damage. If you discover any damage, immediately report it to the transport company or the dealer.



NOTE!

Protect the device from moisture.

5.2 Packaging

All packaging materials and packaging aids used are recyclable and must always be recycled.

Packing components made of cardboard are shredded for waste paper collection.

The foils are made of polyethylene (PE), the upholstery parts made of polystyrene (PS). You can hand over these substances to a recycling center or to the disposal company responsible for you.

5.3 Storage

Clean the mobile fan, oil the bearings and store it in a frost-free and dry environment. Do not put anything on the fan.

6 Operation



Use protective gloves!



Wear protective clothes!



DANGER!

Danger to life through electric shock!

Contact with live components may result in fatal injury.



CAUTION!

Risk of crushing!

Incorrect work on the fan may cause injury to fingers and hands.

Never insert your fingers into the protective grille of the impeller!



ATTENTION!

- The device is not to be used in potentially explosive atmospheres.
- The device must not be operated in humid workplaces or outdoors in wet conditions.

- Observe mains voltage! The voltage of the current source must correspond to the information on the type plate (Fig. 2).
- Make sure that the ON/OFF switch is off when connecting to the mains.

Step 1: Set up the device at the location where you want it to be used.

Step 2: Set the desired fan angle with the locking screws (models MV 50, MV 60 and MV 80). Setting angles are possible from -30° to +90°.



Fig. 5: Adjusting the setting angles

Step 3: Plug the mains plug into the socket and switch on the fan.

7 Care, maintenance and repair

7.1 Care by cleaning

The mobile fan must always be kept in a clean condition.



ATTENTION!

Before starting cleaning, maintenance and repair work, switch off the unit and pull the mains plug!



Use protective gloves!



NOTE!

Never use aggressive cleaning agents for any cleaning work. This can damage or destroy the device.

Clean all plastic parts and painted surfaces with a soft, damp cloth and some neutral cleaner.

7.2 Maintenance and repair



ATTENTION!

- Maintenance and repair work may only be carried out by qualified personnel.
- Only use original spare parts in case of repair.
- After maintenance/repair work, all safety devices must be installed again on the unit before it can be put into operation

The impeller bearings must be lubricated by a specialist every 1000 operating hours.

If the fan does not function properly, contact your dealer or our customer service. The contact details can be found in chapter 1.2 Customer Service.

All protective and safety devices must be reinstalled immediately after completion of repair and maintenance work.

8 Disposal, recycling of used equipment

In your own interest and in the interest of the environment, please ensure that all components of the equipment are only disposed of in the designated and approved ways

8.1 Decommission

Disused equipment must be taken out of service immediately in order to avoid later misuse and endangering the environment or people.

Step 1: Remove all environmentally hazardous fluids from the old devices.

Step 2: If necessary, dismantle the devices into manageable and usable components and components.

Step 3: The device components and operating materials must be routed to the appropriate disposal routes.

8.2 Disposal of electrical equipment

Please note that electrical equipment contains a variety of recyclable materials and environmentally harmful components. Contribute to the separation and proper disposal of these components.

In case of doubt, please contact your municipal waste disposal. If necessary, the help of a specialist disposal company should be consulted for processing.

9 Spare parts



DANGER!

Risk of injury due to use of incorrect spare parts!

The use of incorrect or faulty replacement parts may cause danger to the operator and cause damage and malfunction.

- Only use original spare parts from the manufacturer or replacement parts approved by the manufacturer.
- In case of doubt, always contact the manufacturer.



Tips and recommendations

If non-approved spare parts are used, the manufacturer's warranty expires.

9.1 Spare parts order

The spare parts can be obtained from the dealer.

Specify the following key data for inquiries or ordering spare parts:

- Device type
- Item number
- Position number
- Construction year
- Amount
- Desired shipping method (post, freight, sea, air, express)
- Delivery address

Spare parts orders without above given information can not be considered. If the shipping method is missing, shipping will be at the discretion of the supplier.

Information on the device type, article number and year of manufacture can be found on the type plate, which is attached to the device.

Example

The protective grid for the mobile fan MV 30 must be ordered. The protective grid is identified in the spare parts drawing with the number 2.

When ordering spare parts, send a copy of spare parts drawing with marked component (protective grid) and marked position number (2) to the authorised dealer or to the spare parts department and provide the following information:

- Type of device: **Mobile Fan MV 30**
- Item number: **6260030**
- Position number: **2**

The item number of your device:

MV 30	6260030
MV 50	6260050
MV 60	6260060
MV 80	6260080

9.2 Spare parts drawing

The following drawings should help you to identify necessary spare parts in case of service.

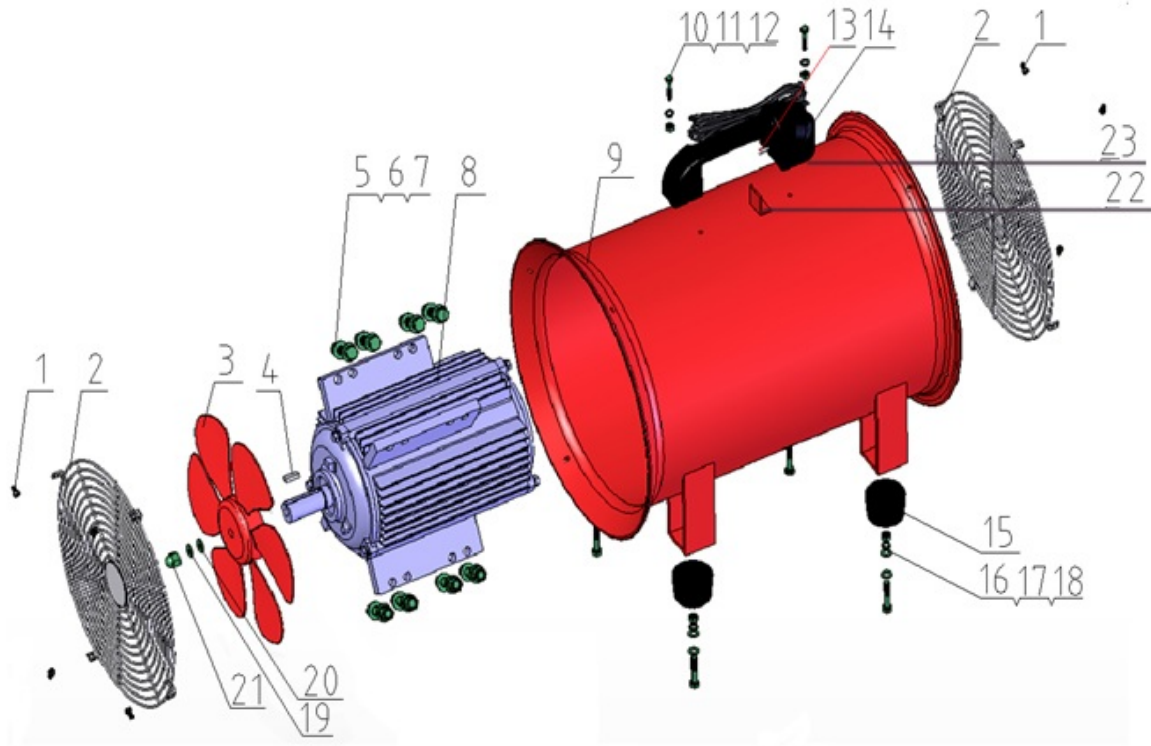


Fig. 6: Spare parts drawing MV 30

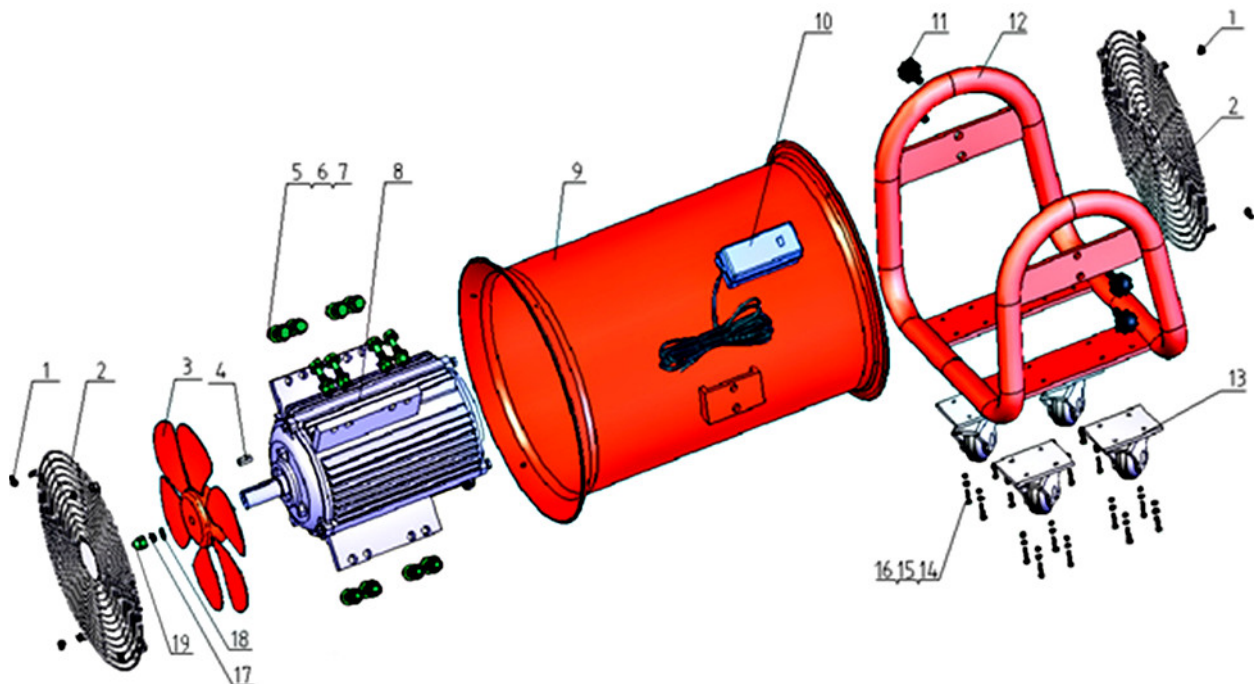
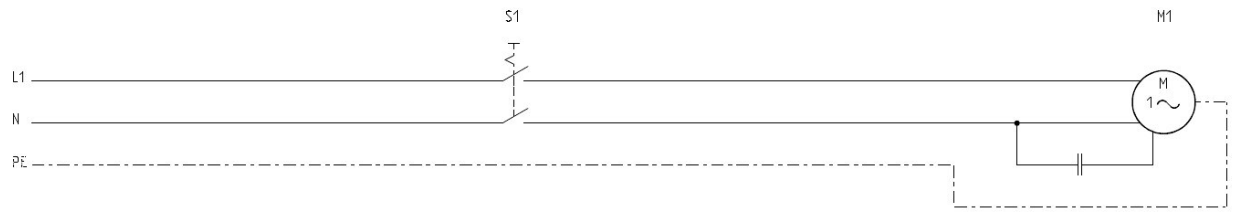
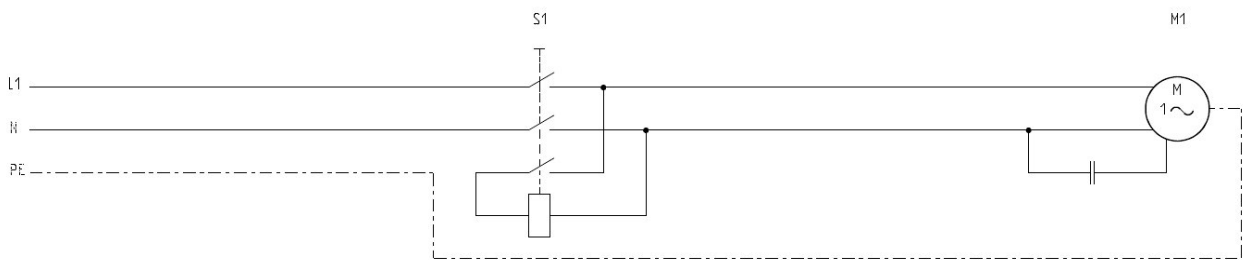


Fig. 7: Spare parts drawing MV 50, MV 60 and MV 80

10 Electrical circuit diagrams



MV 30



MV 50, MV 60 and MV 80

Fig. 8: Electrical circuit diagram MV 30 (top), MV50, MV 60 and MV 80 (bottom)

11 EC Declaration of Conformity

According to Machinery Directive 2006/42/EC Annex II 1.A

Manufacturer / distributor: Stürmer Maschinen GmbH
Dr.-Robert-Pfleger-Str. 26
D-96103 Hallstadt

hereby declares that the following product

Product group: Unicraft® Workshop technology

Type of machine: Mobile Fan

Designation of machine*:	Item number:
<input type="checkbox"/> MV 30	6260030
<input type="checkbox"/> MV 50	6260050
<input type="checkbox"/> MV 60	6260060
<input type="checkbox"/> MV 80	6260080

Serial number*: _____

Year of manufacture*: 20_____

* fill these fields according to the information on the type plate

complies with all relevant provisions of the above mentioned directive as well as the other applied directives (below) - including their applicable modifications at the time of the declaration.

EU directives:	2014/30/EU	EMC Directive
	2011/65/EU	RoHS Directive

The following harmonised standards have been applied:

DIN EN ISO 12100:2011-03	Safety of machines - General principles of design - Risk evaluation and risk reduction (ISO 12100:2010)
DIN EN 60204-1:2019-06	Safety of machinery - Electrical equipment of machines - Part 1: General requirements
DIN EN 55014-1:2018-08	Electromagnetic compatibility - Requirements for household appliances, electric tools and similar apparatus - Part 1: Emission
DIN EN 55014-2:2016-01	Electromagnetic compatibility - Requirements for household appliances, electric tools and similar apparatus - Part 2: Immunity - Product family standard
DIN EN IEC 61000-3-2:2019-12	Electromagnetic compatibility (EMC) - Part 3-2: Limits - Limits for harmonic current emissions (equipment input current ≤ 16 A per phase)
DIN EN 61000-3-3:2020-07	Electromagnetic compatibility (EMC) - Part 3-3: Limits - Limitation of voltage changes, voltage fluctuations and flicker in public low-voltage supply systems, for equipment with rated current ≤ 16 A per phase and not subject to conditional connection

Responsible for documentation: Kilian Stürmer, Stürmer Maschinen GmbH,
Dr.-Robert-Pfleger-Str. 26, D-96103 Hallstadt

Hallstadt, 23.08.2022



Kilian Stürmer
CEO, Director



12 Notes

