



HOLZMANN MASCHINEN GmbH
Marktplatz 4 · A-4170 Haslach
Tel. +43 7289 71 562-0
info@holzmann-maschinen.at
www.holzmann-maschinen.at

Originalfassung

DE BETRIEBSANLEITUNG

Übersetzung / Translation

EN USER MANUAL

FR MANUEL D'UTILISATION

POLIERMASCHINE

POLISCHING MACHINE

POLISSEUSE



DSM150PS_230V



DSM200PS_230V
DSM200PS_400V



**YOUR
JOB.
OUR
TOOLS.**



2 SICHERHEITSZEICHEN / SAFETY SIGNS

DE	SICHERHEITSZEICHEN BEDEUTUNG DER SYM- BOLE	EN	SAFETY SIGNS DEFINITION OF SYM- BOLS	FR	SIGNALISATION DE SÉ- CURITÉ DÉFINITION DES SYM- BOLES
----	--	----	--	----	--



DE **CE-KONFORM:** Dieses Produkt entspricht den EU-Richtlinien.

EN **EC-CONFORM:** This product complies with the EC-directives.

FR **CONFORMITÉ CE** - Ce produit répond aux directives CE.



DE Anleitung beachten!

EN Follow the instructions!

FR Respecter le manuel!



DE Schutzausrüstung tragen!

EN Wear protective equipment!

FR Porter un équipement de protection individuelle!



DE Maschine vor Wartung und Pausen ausschalten und Netzstecker zie-
hen!

EN Stop and pull out the power plug before any break and engine
maintenance!

FR Éteindre la machine avant la maintenance et les pauses et débrancher
la fiche secteur!

DE	Warnschilder und/oder Aufkleber an der Maschine, die unleserlich sind oder entfernt wurden, sind umgehend zu erneuern.
EN	Missing or non-readable security stickers have to be replaced immediately.
FR	Les panneaux d'avertissement et/ou autocollants d'avertissement illisibles ou retirés sur la machine doivent être remplacés immédiatement!



3 TECHNIK / TECHNICS

3.1 Lieferumfang / Delivery content

DSM150PS / DSM200PS



#	Beschreibung / Description	Qty.	#	Beschreibung / Description	Qty.
1	Maschine / machine / machine	1	2	Betriebsanleitung / user manual / Manuel d'utilisation	1

3.2 Komponenten / Components



	Beschreibung / Description		Beschreibung / Description
1	EIN-AUS-Schalter / ON-Off-switch / Interrupteur MARCHE-ARRÊT	4	Fixiermutter/Flansch / fixation nut / flange / Écrou de fixation / bride
2	Polierscheibe / polishing disc / Disque de polissage	5	Maschinenkörper / machine body / Corps de la machine
3	Standfuß mit 4 Bohrungen / stand with 4 holes / Base avec 4 trous		

3.3 Technische Daten / Technical data

Spezifikation / Specification		DSM150PS	DSM200PS	DSM200PS
Spannung (Frequenz) / voltage (frequency) / Voltage / Fréquence	V (Hz)	230 (50)	230 (50)	400 (50)
Motorleistung (S1/S6) / motor power (S1/S6) / Puissance nominale du moteur (S1/S6)	W	300 / 520 S6(15%)	600 / 900 S6(15%)	600 / 900 S6(15%)
Leerlaufdrehzahl / Idle-speed / Vitesse de ralenti	min ⁻¹	2950	2950	2950
Polierscheibenröße / polishing disc dimension / Taille du disque de polissage	mm	150 x 25 x 16	200 x 25 x 16	200 x 25 x 16
Gewicht netto / weight net / Poids (net)	kg	12	19	19
Gewicht brutto / weight gross / Poids (brut)	kg	13	20,5	20,5
Maschinenmaße (LxBxH) / Machine dimension (LxWxH) / Dimensions de la machine (LxIxH)	mm	470x170x220	470x200x250	470x200x250
Verpackungsmaße (L x B x H) / packaging dimensions (L x W x H) / Dimensions de l'emballage	mm	471x261x254	525x320x320	525x320x320



11 PREFACE (EN)

Dear Customer!

This manual contains information and important notes for safe commissioning and handling of the polishing machine DSM150PS_230V, DSM200PS_230V and DSM200PS_400V, hereinafter referred to as "machine" in this document.



This manual is part of the machine and must not be removed. Save it for later reference and if you let other people use the machine, add this manual to the machine.

Please pay special attention to the chapter safety!

Before first use read this manual carefully. It eases the correct use of the machine and prevents misunderstanding and damages of machine.

Due to constant advancements in product design, construction, illustrations and contents may deviate slightly. If you notice any errors, please inform us.

We reserve the right to make technical changes!

Check the goods immediately after receipt and note any complaints on the consignment note when taking over the goods from the deliverer!

Transport damage must be reported to us separately to us within 24 hours.

HOLZMANN MASCHINEN GmbH cannot accept any liability for transport damage that has not been reported.

Copyright

© 2024

This documentation is protected by copyright. All rights reserved! In particular, the reprint, translation and extraction of photos and illustrations will be prosecuted.

The place of jurisdiction is the regional court Linz or the court responsible for 4170 Haslach is valid.

Customer service contact

HOLZMANN MASCHINEN GmbH
4170 Haslach, Marktplatz 4
AUSTRIA
Tel +43 7289 71562 - 0
info@holzmann-maschinen.at



12 SAFETY

This section contains information and important notes on the safe commissioning and handling of the machine.



For your safety, read this manual carefully before commissioning. This will enable you to handle the machine safely and thus prevent misunderstandings as well as personal injury and damage to property. Pay special attention to the symbols and pictograms used on the machine as well as the safety information and danger warnings!

12.1 Intended use of the machine

The machine is designed exclusively for the following activities:
for polishing metals, wood and plastics workpieces.

NOTE



HOLZMANN MASCHINEN GmbH assumes no responsibility or warranty for any other use or use beyond this and for any resulting damage to property or injury.

12.1.1 Technical restrictions

The machine is designed for the work under the following conditions:

Relative humidity	max. 70 %
Temperature (operation)	+5 °C to +40 °C
Temperature (storage, transport)	-25 °C to +55 °C

12.1.2 Prohibited applications / Dangerous misuse

- Operating the machine without adequate physical and mental fitness.
- Operating the machine without knowledge of the manual.
- Modifying the machine design.
- Operating the machine outdoors.
- Operating the machine near flammable liquids, vapours or gases.
- Operating the machine outside the technical limits specified in this manual.
- Removing of the safety markings attached to the machine.
- Modifying, circumventing or disabling the safety devices of the machine.

The non-intended use or the disregard of the explanations and instructions described in this manual will result in the expiration of all warranty claims and compensation claims for damages against HOLZMANN MASCHINEN GmbH.

12.2 User requirements

The machine is designed to be operated by one person. The prerequisites for operating the machine are physical and mental fitness as well as knowledge and understanding of the operating instructions. Persons who, due to their physical, sensory or mental capabilities, inexperience or lack of knowledge, are unable to operate the machine safely must not use the machine without supervision or instruction by a responsible person.

Please note that locally applicable laws and regulations determine the minimum age of the operator and may restrict the use of this machine!

Work on electrical components or equipment may only be carried out by a qualified electrician or under the guidance and supervision of a qualified electrician.

Put on your personal protective equipment before working on the machine.

12.3 General safety instructions

To avoid malfunctions, damage and health impairments when working with the machine, the following points must be observed in addition to the general rules for safe working:

- Check the machine for completeness and function before starting.
- Select a level, vibration-free, non-slip surface as the installation area.
- Make sure that the guards are in good working order and properly maintained.
- Ensure sufficient space around the machine.



- Ensure sufficient lighting conditions at the workplace to avoid stroboscopic effects.
- Ensure a clean working environment.
- Only use tools that are in perfect condition and free of cracks and other defects (e.g. deformations).
- Remove tool keys and other setting tools before switching on the machine.
- Keep the area around the machine free of obstacles (e.g. dust, chips, cut-off workpiece parts, etc.).
- Never leave the running machine unattended. Switch off the machine before leaving the working area and secure it against unintentional or unauthorized restarting.
- The machine may only be operated, maintained or repaired by persons who are familiar and who have been informed about the dangers arising from this work.
- Ensure that unauthorized persons keep a safety distance from the machine and keep children away from the machine.
- When working on the machine, never wear loose jewellery, loose clothing, ties or long, open hair.
- Hide long hair under hair protection.
- Wear close fitting protective work clothing and suitable protective equipment (eye protection, dust mask, ear protection, work gloves).
- Always work with care and the necessary caution and never use excessive force.
- Do not overload the machine.
- Shut down the machine and disconnect it from the power supply, before adjustment, changeover, cleaning, maintenance or repair work, etc. Before starting work on the machine, wait until all tools or machine parts have come to a complete standstill and secure the machine against unintentional restart.
- Do not work on the machine if you are tired, not concentrated or under the influence of medication, alcohol or drugs!

12.4 Electrical safety

- Make sure that the machine is earthed.
- Only use suitable (extension-)cables. Do not use the cable to pull the plug out of the socket. Protect the cable from heat, oil and sharp edges.
- The machine may only be used in humid environments if the power source is protected by a residual current circuit breaker.
- Protect yourself from electric shock. Avoid body contact with earthed parts.
- A damaged cable must be replaced immediately!

12.5 Special safety instructions for this machine

- Do not reach into the running machine.
- Do not brake the polishing disc with your hand or other objects.
- Do not use the machine if the polishing disc is damaged.
- Polishing dust can contain chemical substances that have a negative effect on the personal health. Work on the machine only in well ventilated rooms and with a suitable dust mask!
- The machine must stand firmly on a firm, stable, vibration-resistant base with rubber feet mounted. For stationary operation, we recommend that the machine be fixed to the ground (e.g. stable workbench) or to a suitable machine stand (e.g. DSMMS1).

12.6 Hazard warnings

Despite intended use, certain residual risk factors remain. Due to the structure and construction of the machine, hazardous situations may occur which are identified in this manual as follows:

DANGER



A safety instruction designed in this way indicates an imminently hazardous situation which, if not avoided, will result in death or serious injury.

**WARNING**

A safety instruction designed in this way indicates a potentially hazardous situation which, if not avoided, could result in death or serious injury.

CAUTION

A safety instruction designed in this way indicates a possibly hazardous situation which, if not avoided, may result in minor or moderate injury.

NOTE

A safety notice designed in this way indicates a potentially hazardous situation which, if not avoided, may result in property damage.

Regardless of all safety regulations, your common sense and your appropriate technical aptitude/training are and remain the most important safety factors in the error-free operation of the machine. **Safe working depends on you!**

13 TRANSPORT

For proper transport, also observe the instructions and information on the transport packaging regarding centre of gravity, lifting points, weight, means of transport to be used as well as the prescribed transport position etc.

Transport the machine in its packaging to the place of installation. Ensure the correct body posture when lifting, carrying and setting down the load.

Lifting / Setting down

- When lifting/setting down, ensure that you are standing firmly (legs hip-width apart).
- Lift/set down load with knees bent and back straight (like weightlifter).
- Do not lift/set down load with a jerk.

Carrying

- Carry load with both hands as close to body as possible.
- Carry load with straight back.

14 ASSEMBLY

14.1 Preparation

14.1.1 Check delivery content

Always note visible transport damage on the delivery note and check the machine immediately after unpacking for transport damage or missing or damaged parts. Report any damage to the machine or missing parts immediately to your retailer or freight forwarder.

14.1.2 Requirements for the installation site

NOTE: The floor or worktable at the installation site must be able to bear the load of the machine. The minimum space required for the machine is determined by the dimensions of the machine plus a safety area around the machine. Select a flat, solid surface with appropriate space for installation. When setting up the machine, also take into account the working area required to process workpieces. The base of this unit has mounting holes that allow it to be attached to a workbench/machine stand (e.g.: Holzmänn DSMMS1) to prevent it from moving during operation and causing accidental injury or damage.



(DSMMS1)



14.2 Electrical connection

WARNING

**Dangerous electrical voltage!**

Risk of injury due to dangerous electrical voltage!

- The machine may only be connected to the power supply and the associated checks carried out by a qualified electrician or under the instruction and supervision of a qualified electrician!

- Check, whether the neutral connection (if existing) and the protective grounding function properly.
- Check, whether the supply voltage and the frequency correspond to the specifications of the machine.

NOTE

**Deviation of the supply voltage and frequency!**

A deviation from the value of the supply voltage of $\pm 5\%$ is permissible. A short-circuit fuse must be provided in the power supply system of the machine!

- Use a supply cable that fulfils the electrical requirements (e.g. H07RN, H05RN) and take the required cross-section of the supply cable from a current carrying capacity table. Pay attention to the measures for protection against mechanical damage.
- Make sure that the power supply is protected by a residual current circuit breaker.
- Connect the machine only to a properly grounded outlet.
- When using an extension cable, make sure that the dimension matches the connected load of the machine. The connection power can be found in the technical data, the correlation of cable cross-section and cable lengths can be found in the technical literature or obtain information from a specialist electrician.
- A damaged cable must be replaced immediately.

14.2.1 Setting up a 400 V machine (for DSM200PS_400V)

- The grounding conductor is yellow-green.
- Connect the supply cable to the corresponding terminals in the input box (L1, L2, L3, N and PE). If a CEE plug is available, the connection to the power supply is made through an appropriately powered CEE coupling (L1, L2, L3, N and PE).

Plug connection 400V:	5-wire: with N-conductor		4-wire: without N-conductor	
------------------------------	---------------------------------------	--	--	--

- After the electrical connection, check the correct running direction. If the machine runs in the wrong direction, swap two conductive phases, e.g. L1 and L2, at the connection plug.

NOTE



Operation is only permitted with residual current device (RCD) with maximum residual current of 30 mA.

15 OPERATION

15.1 Operating instructions

- After switching on, let the polishing discs accelerate to full speed before starting polishing.
- Do not overload the machine! An unmistakable sign of overload is when the polishing disc loses a significant amount of rotational speed.
- Wear protective goggles when polishing.
- The fixing screws and flange must be checked before each use, if necessary the fixing screw must be retightened.



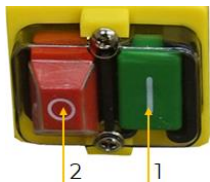
15.2 Handling

CAUTION



Avoid touching the polishing disc and the workpiece immediately after use as they become very hot.

15.2.1 Switch the machine on and off



You can switch the machine on and off with the on/off switch

Switch on: Press button (1)

Switch off: Press button (2)

15.2.2 Polishing

- With the polishing discs different metal alloys like stainless steel, steel, aluminium, brass etc. can be polished.
- Wood or plastics can also be polished.
- The different processes are distinguished between pre-polishing, polishing and high-gloss polishing.

16 CLEANING, MAINTENANCE, STORAGE, DISPOSAL

WARNING



Danger due to electrical voltage! Handling the machine with connected power supply may result in serious injury or death.

→ Always disconnect the machine from the power supply before cleaning, maintenance or repair work and secure it against unintentional reconnection.

16.1 Cleaning

Regular cleaning is a prerequisite for the safe operation of the machine and its long service life.

NOTE



Wrong cleaning agents can attack the varnish of the machine. Do not use solvents, nitro thinners, or other cleaning agents that could damage the machine's paint. Observe the information and instructions of the cleaning agent manufacturer!

- Keep the surfaces and ventilation slots of the machine free of dust and dirt.
- For cleaning, use a soft cloth and a mild soap solution and, if necessary, a damp-free jet of compressed air.

16.2 Maintenance

The machine is low-maintenance and only a few parts have to be serviced. Nevertheless, malfunctions or defects which could impair the safety of the user must be rectified immediately!

- Regularly check that the warning and safety labels on the machine are in perfect and legible condition.
- Use only proper and suitable tools.
- Use only original spare parts recommended by the manufacturer.

16.2.1 Maintenance and Servicing Plan

The type and degree of machine wear depends to a large extent on the operating conditions. The following intervals apply when using the machine within the specified limits:

Interval	Components	Action
Before every start of work	• polishing disc	• check for damage
	• power cord	
Each time after completion of work	• surfaces	• remove dust and dirt
if required	• polishing disc	• replace



16.2.2 Replacing the polishing discs

WARNING



Before opening the cover, make sure that the machine is disconnected from the power supply and secured against accidental start-up. If you have just used the machine, wait a few minutes before opening it until the grinding wheel and machine have cooled down.

- Fix the polishing disc and unscrew the fixing nut and flange.
- Remove the old polishing disc and put on the new one.
- Screw on with flange and fixing nut.
- Run the polishing discs briefly in test mode and check for any irregularities such as unbalance etc.

16.3 Storage

NOTE



Improper storage can damage and destroy important components. Only store packed or already unpacked parts under the intended ambient conditions!

When not in use, store the machine in a dry, frost-proof and lockable place to prevent the formation of rust on the one hand and to ensure that unauthorised persons and in particular children have no access to the machine on the other hand.

16.4 Disposal



Observe the national waste disposal regulations. Never dispose of the machine, machine components or operating equipment in the residual waste. If necessary, contact your local authorities for information regarding available disposal options. If you purchase a new machine or equivalent equipment from your specialist dealer, he is obliged in certain countries to dispose of your old machine properly.

17 TROUBLESHOOTING

WARNING



Danger due to electrical voltage! Manipulating the machine with the power supply up may result in serious injury or death. Before carrying out any troubleshooting work, always disconnect the machine from the power supply and secure it against unintentional recommissioning!

Many possible sources of error can be excluded in advance if the machine is properly connected to the mains. If you are unable to carry out necessary repairs properly and/or do not have the required training, always consult a specialist to solve the problem.

Trouble	Possible cause	Solution
Machine cannot be switched on	• Mains plug is not plugged in	• Plug in the mains plug
	• On-Off-switch is defective	• Contact the Customer Service Center



25 ERSATZTEILE / SPARE PARTS / PIÈCES DE RECHANGE

25.1 Ersatzteilbestellung / Spare parts order / Commande de pièces détachées

(DE) Mit HOLZMANN-Ersatzteilen verwenden Sie Ersatzteile, die ideal aufeinander abgestimmt sind. Die optimale Passgenauigkeit der Teile verkürzen die Einbauzeiten und erhöhen die Lebensdauer.

HINWEIS



Der Einbau von anderen als Originalersatzteilen führt zum Verlust der Garantie! Daher gilt: Beim Tausch von Komponenten/Teile nur vom Hersteller empfohlene Ersatzteile verwenden.

Bestellen Sie die Ersatzteile direkt auf unserer Homepage-Kategorie ERSATZTEILE oder kontaktieren Sie unseren Kundendienst

- über unsere Homepage-Kategorie SERVICE-ERSATZTEILANFORDERUNG,
- per Mail an service@holzmann-maschinen.at.

Geben Sie stets Maschinentype, Ersatzteilnummer sowie Bezeichnung an. Um Missverständnissen vorzubeugen, empfehlen wir, mit der Ersatzteilbestellung eine Kopie der Ersatzteilzeichnung beizulegen, auf der die benötigten Ersatzteile eindeutig markiert sind, falls Sie nicht über den Online-Ersatzteilkatalog anfragen.

(EN) With original HOLZMANN spare parts you use parts that are attuned to each other shorten the installation time and elongate your products lifespan.

NOTE



The installation of parts other than original spare parts leads to the loss of the guarantee! Therefore: When replacing components/parts, only use spare parts recommended by the manufacturer.

Order the spare parts directly on our homepage-category SPARE PARTS or contact our customer service

- via our Homepage-category SERVICE-SPARE PARTS REQUEST,
- by e-mail to service@holzmann-maschinen.at.

Always state the machine type, spare part number and designation. To prevent misunderstandings, we recommend that you add a copy of the spare parts drawing with the spare parts order, on which the required spare parts are clearly marked, especially when not using the online-spare-part catalogue.

(FR) Les pièces de rechange HOLZMANN sont conçues pour correspondre idéalement. La précision d'ajustage optimale des pièces réduisent les temps de pose et augmente la durée de vie.

AVIS



Le montage de pièces autres que les pièces de rechange d'origine entraîne la perte de la garantie ! Par conséquent, la règle est la suivante : Utiliser uniquement des pièces de rechange recommandées par le fabricant pour le remplacement des composants/pièces.

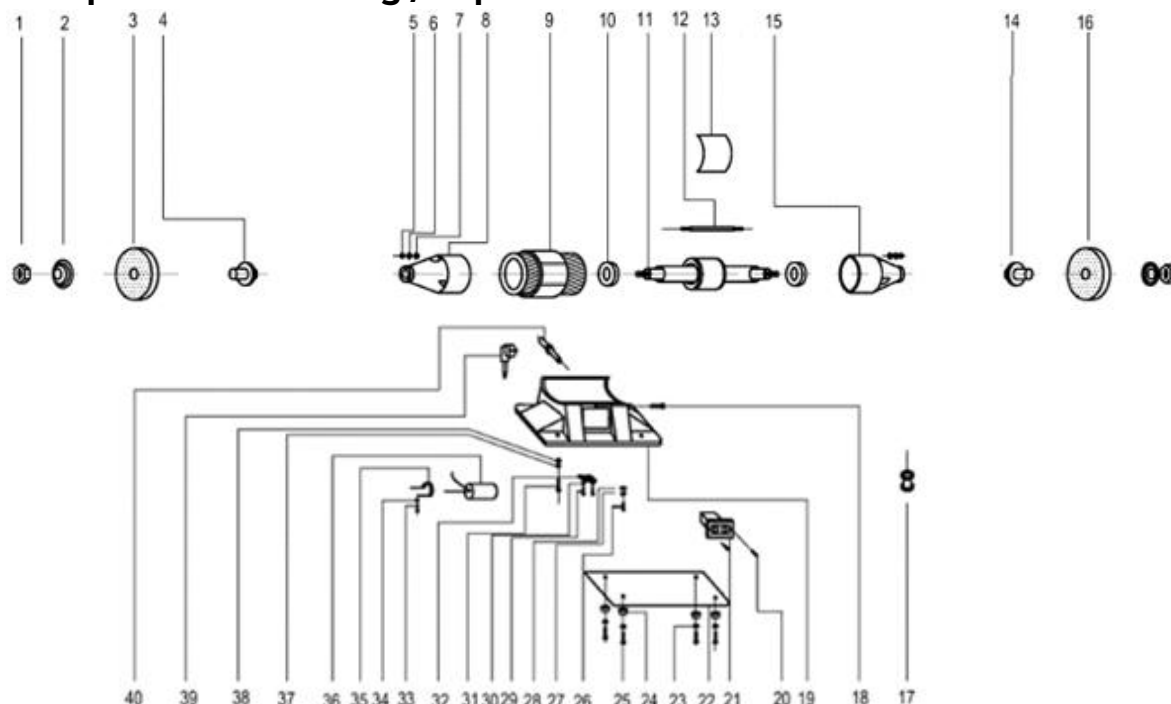
Commandez les pièces de rechange directement sur notre page d'accueil – catégorie PIÈCES DE RECHANGE ou contactez notre service client

- via la catégorie SERVICE-DEMANDE D'ASSISTANCE de notre page d'accueil,
- par e-mail à l'adresse service@holzmann-maschinen.at.

Toujours indiquer le type de machine, le numéro de pièce de rechange et la désignation. Afin d'éviter tout malentendu, nous vous recommandons de joindre une copie du plan des pièces détachées à la commande de pièces détachées, sur laquelle les pièces détachées requises sont clairement indiquées, si vous ne faites pas la demande via le catalogue de pièces de rechange en ligne.



25.2 Explosionszeichnung / Exploded view



25.3 Ersatzteilliste / Spare part list

No.	Description	Qty.	No.	Description	Qty.
1	Screw nut	1	21	Switch	1
2	Outside chuck	2	22	Base plate	1
3	(Left) polishing disc	1	23	washer	4
4	Chuck	2	24	rubber feet	4
5	Screw nut	8	25	Bolt	4
6	Spring washers	8	26	Bolt	1
7	Flat pad	8	27	washer	1
8	Left cover	1	28	tooth washer	1
9	Stator	1	29	Bolt	2
10	Bearing	2	30	Flat washer	2
11	Rotor shaft	1	31	Bolt	2
12	Screw mandrel	4	32	cord bushing plate	1
13	Stickers	1	33	Bolt	1
14	Chuck	1	34	Flat washer	1
15	Right cap	1	35	capacitor clip	1
16	(Right) polishing disc	1	36	Capacitor	1
17	A coil	1	37	Washer	2
18	Bolt	1	38	Flat washer	2
19	Base	1	39	Plug & Cord	1
20	Bolt	2	40	Cable Adaptor	1

26 ZUBEHÖR / ACCESSORIES

(DE) Optionales Zubehör finden Sie online auf der Produktseite, Kategorie EMPFOHLENES ZUBEHÖR ZUM PRODUKT.

(EN) Optional accessories can be found online on the product page, category RECOMMENDED PRODUCT ACCESSORIES.

(FR) Des accessoires en option sont disponibles en ligne sur la page produit, catégorie ACCESSOIRES RECOMMANDÉS POUR LE PRODUIT.